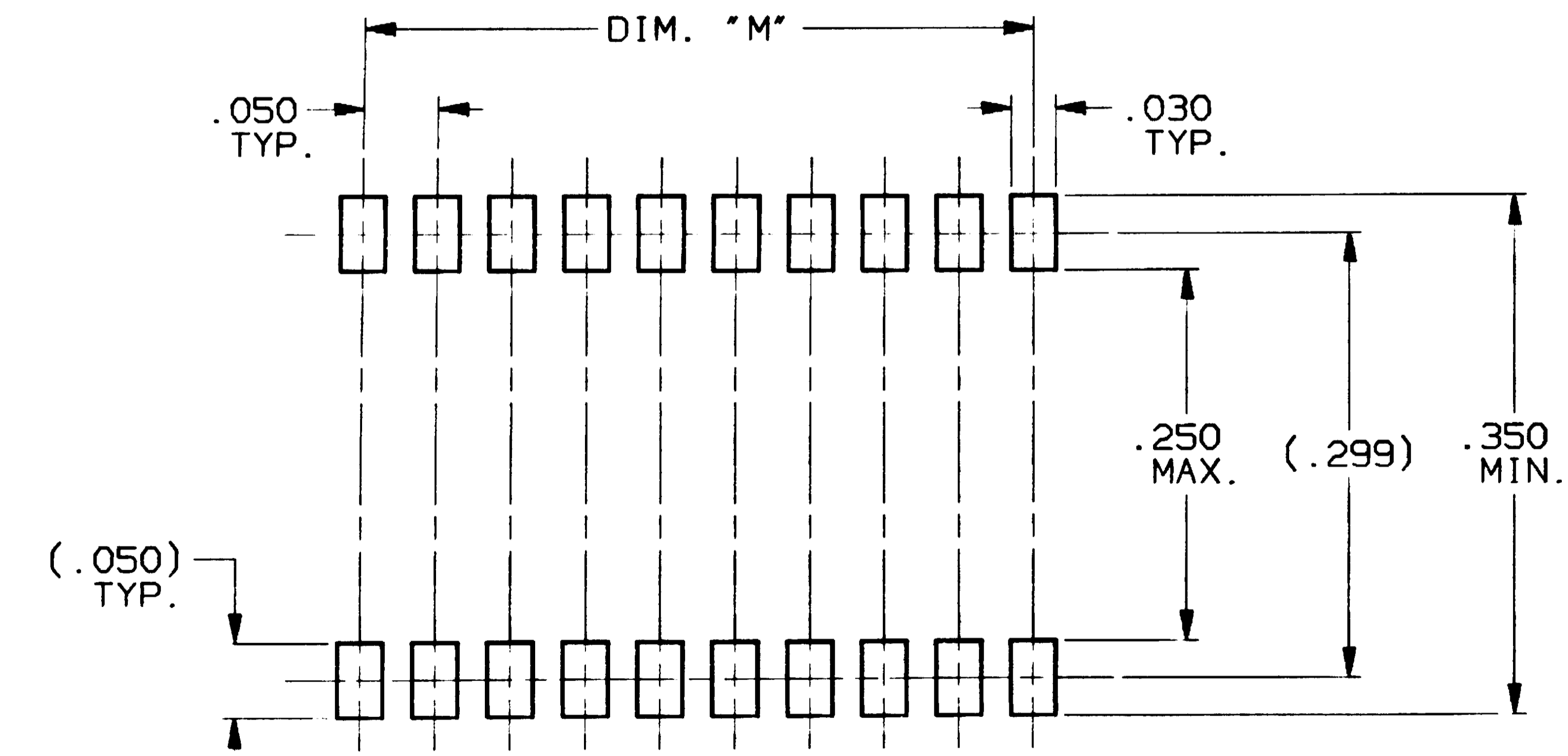
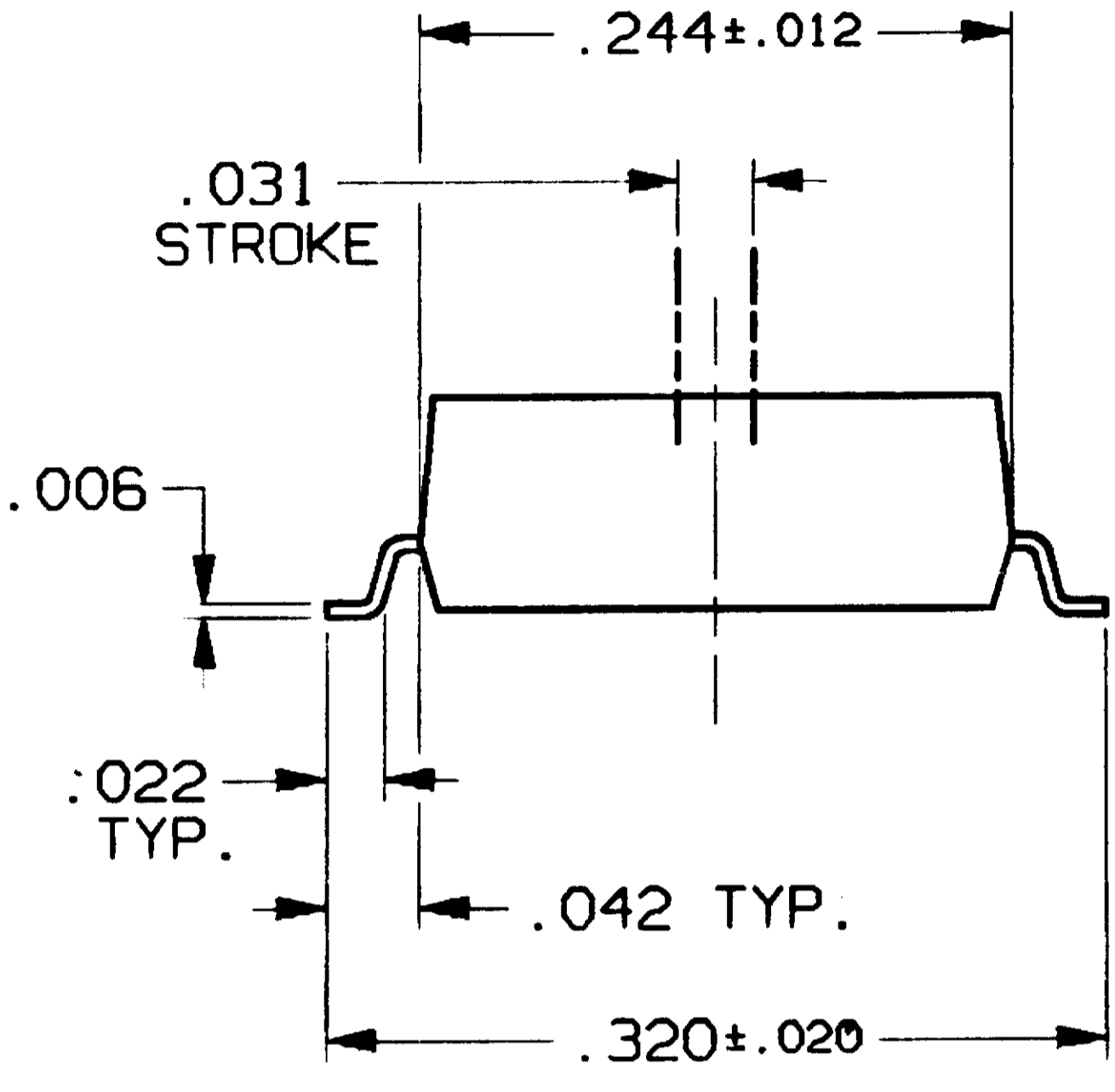
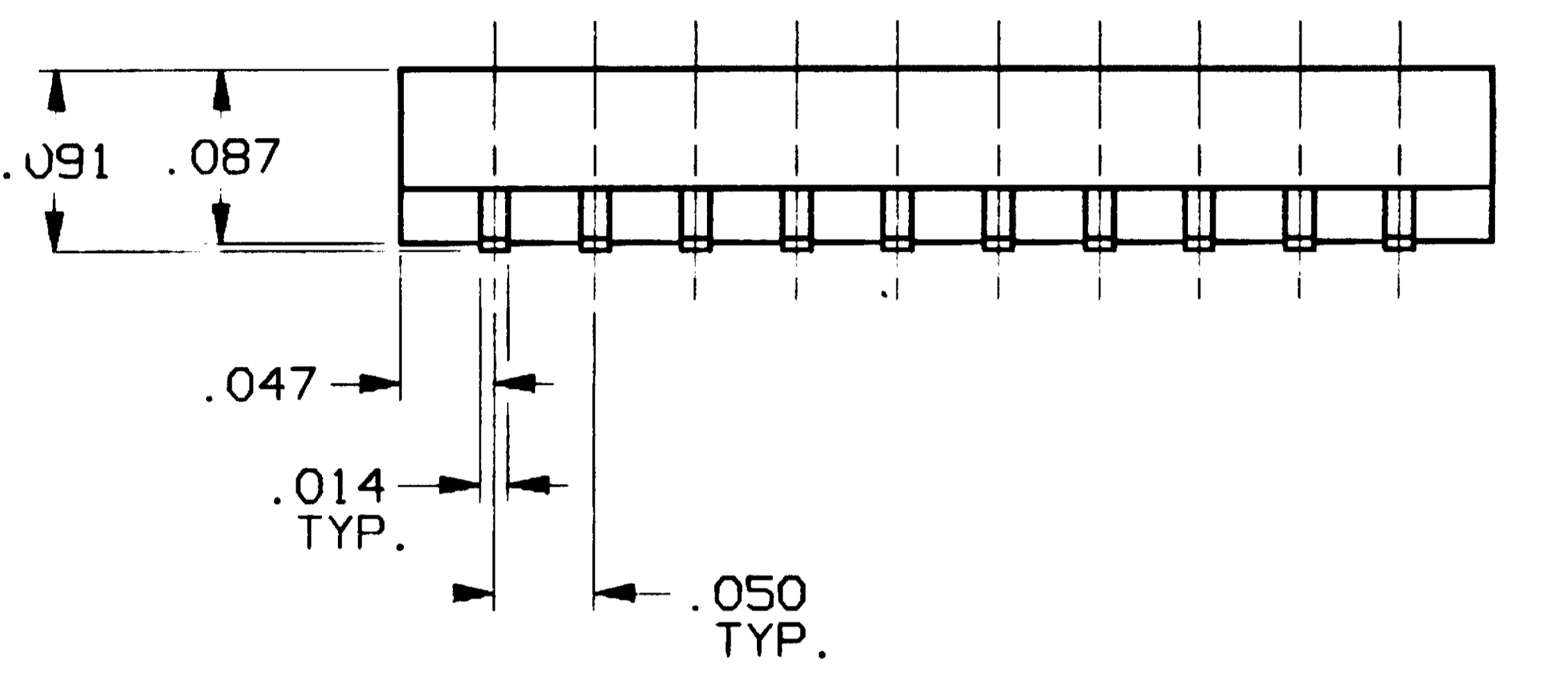
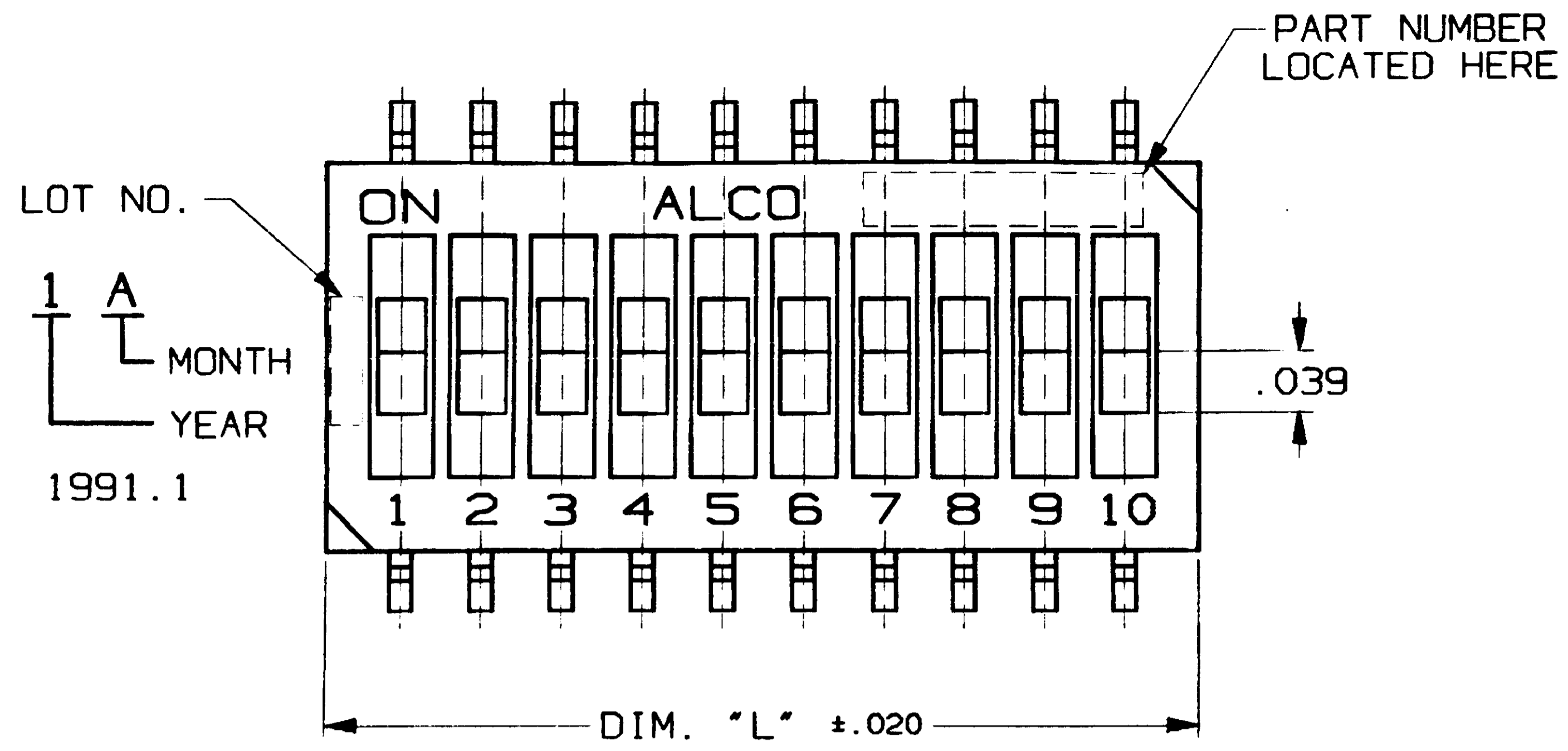


4 3 2 1

CONVERSION CHART	
INCH	MM
.002	0.05
.004	0.10
.006	0.15
.008	0.20
.010	0.25
.012	0.30
.014	0.35
.020	0.50
.022	0.57
.030	0.76
.031	0.80
.039	1.00
.042	1.06
.047	1.20
.050	1.27
.087	2.20
.091	2.30
.144	3.67
.150	3.81
.244	6.20
.250	6.35
.299	7.60
.320	8.12
.344	8.75
.350	8.89
.444	11.29
.450	11.43
.544	13.83



**P.C.B. PAD LAYOUT**

PCB LAYOUT TOLERANCES ±.002 ON ALL DIMENSIONS

**4 SPECIFICATIONS:**

**MATERIALS:**  
 BASE: PPS  
 COVER: PPS  
 ACTUATOR: HIGH TEMPERATURE POLYESTER.  
 MOVING CONTACTS: COPPER ALLOY, GOLD OVER NICKEL PLATED.  
 FIXED CONTACTS: COPPER ALLOY, GOLD OVER NICKEL PLATED.  
 TERMINALS: COPPER ALLOY, TIN-LEAD OVER NICKEL PLATED.

**ELECTRICAL:**  
 CONTACT RATING: NON-SWITCHING 100mA @ 50 VDC  
 SWITCHING: 25mA @ 24 VDC.  
 INITIAL CONTACT RESISTANCE: 100mΩ MAX. @ 2 VDC, 10 mA.  
 INSULATION RESISTANCE: 100 MEGOHMS MIN. @ 100 VDC.  
 DIELECTRIC STRENGTH: 300 VAC. 1 MINUTE.  
 LIFE: 1,000 CYCLES.

**MECHANICAL:**  
 OPERATING FORCE: 600G MAX.

**ENVIRONMENTAL:**  
 OPERATING TEMPERATURE: -22°F TO +185°F (-30°C TO +85°C).  
 STORAGE TEMPERATURE: -49°F TO +212°F (-45°C TO +100°C).

**4 NOTES:**

1. INTERPRET DRAWING PER ASME Y14.5M-1994.
2. SUPPLIED WITH TAPE SEAL STANDARD.
3. FOR TAPE AND REEL PACKAGING- PART NO. GDHXXSTR SEE MODEL NUMBER CHART BELOW.
4. FOR TUBE PACKAGING REFER TO DRAWING NO. 100742.
5. FOR NO SEAL OPTION = NS.

NO SEAL OPTION	MODEL	POLE	DIM.L	DIM.M
	GDH02SNS	2	.144	.050
	GDH04SNS	4	.244	.150
	GDH06SNS	6	.344	.250
	GDH08SNS	8	.444	.350
	GDH10SNS	10	.544	.450

NO SEAL OPTION	MODEL No.	CARRIER TAPE P/N	TAPE COVER P/N	REEL P/N
	GDH02STRNS	100648-1P1	100517-1P3	100552-1P3
	GDH04STRNS	100648-1P2	100517-1P3	100552-1P3
	GDH06STRNS	100648-1P3	100517-1P3	100552-1P3
	GDH08STRNS	100648-1P4	100517-1P4	100552-1P4
	GDH10STRNS	100648-1P5	100517-1P4	100552-1P4

4

**OUTLINE DRAWING**

SPECIFICATIONS ARE SUBJECT TO CHANGES WITHOUT NOTICE

<p>THIRD ANGLE PROJECTION</p>	UNLESS OTHERWISE SPECIFIED DIMENSIONS ARE IN INCHES DO NOT SCALE PRINT		ORIGINAL DATE OF DRAWING: 7-29-91
	TOLERANCES (EXCEPT AS NOTED) ANGULAR = ±1° DECIMAL .XX = ± DECIMAL .XXX = ±.010 DECIMAL .XXXX = ±	FILE NAME: 80968OUT DIRECTORY: DIPSWTCH	DRAWN: B. RUHMSHOTTEL CHECKED: C. MORAN APPROVED: J. SYLVIA
AUGAT CONFIDENTIAL This document contains information which is the exclusive property of Augat Inc. Distribution, reproduction or use by others is not permitted without the expressed written consent of Augat Inc.	MATERIAL: SEE SPECIFICATIONS FINISH: SEE SPECIFICATIONS	CODE IDENT. NO. 91506 DWG. SIZE C	TITLE: <b>OUTLINE DRAWING</b> DIP SWITCH GDH SERIES DWG. NO. 80968 PRODUCT CODE: D26 SCALE: SHEET 1 OF 1

THIS IS A C.A.D. GENERATED DRAWING. DO NOT MAKE MANUAL REVISIONS TO MASTER.

**AUGAT** INC. 452 JOHN DIETSCH BLVD. ATTLEBORO FALLS, MASS. 02763

TITLE: **OUTLINE DRAWING**  
 DIP SWITCH  
 GDH SERIES

DWG. NO. 80968  
 PRODUCT CODE: D26  
 SCALE: SHEET 1 OF 1

REV	0	1	2	3	4	5	6
REVISIONS	INITIAL RELEASE ESR#4460 BR 7-29-91 APP'D: JS 9-10-91	REVISED ECO#1217-93 CMM 1-18-94 APP'D: J. SYLVIA 1-19-93	REVISED ECO#223-94 SEK 6-28-94 APP'D: MLL 6-29-94	REVISED ECO#651-94 C. THEODORE 8-24-94 APP'D: D. SARKISIAN 8-24	REVISED ECO#392-95 SEK 5-23-95 APP'D: D. SARKISIAN 6-6	REVISED ECO# 300-96 L.S. 5-13-96 APP'D: W. MONTAGUE 5-14-96	REVISED ECO# 40-97 CAT 2-26-97 APP'D: S.C. 5/1/97