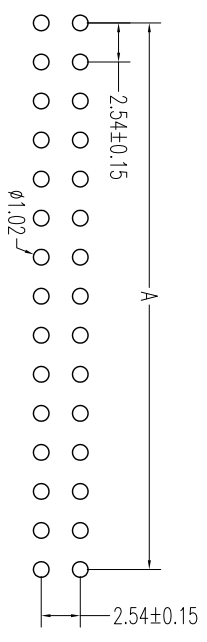
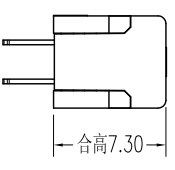
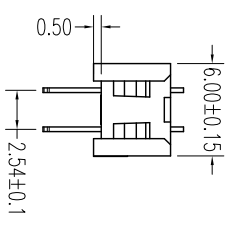
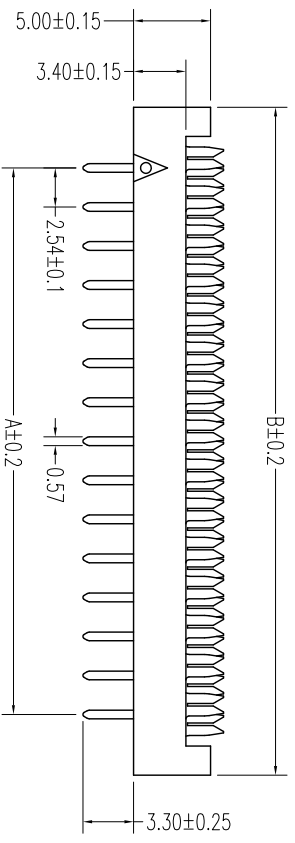
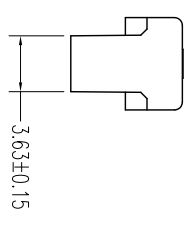
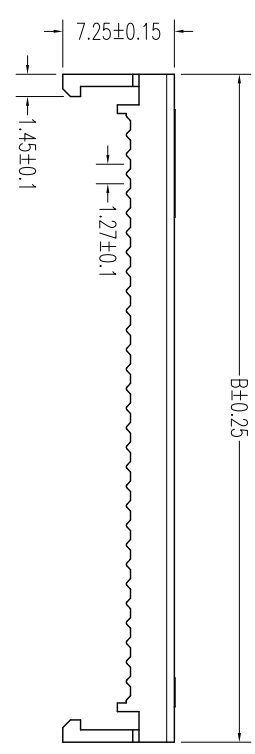


REV.	DESCRIPTION	DATE
A	RELEASE	2012/11/7



NOTES:
 Insulator Material: PBT, UL 94V-0
 Contact Plating: TIN, 80-100μ"
 Contact Material: Brass

Current Rating : 1A AC,DC
 Contact Resistance: 20MΩ Max.
 Dielectric Withstanding: AC 500V
 Insulator Resistance: 1000MΩ Min.
 Operating Temp.: -40°C~+105°C



NUMBER OF POSITIONS	DIMENSION	
	A	B
06	5.08	12.98
08	7.62	15.52
10	10.16	18.06
12	12.70	20.60
14	15.24	23.14
16	17.78	25.68
18	20.32	28.22
20	22.86	30.76
24	27.94	35.84
26	30.48	38.38
30	35.56	43.46
34	40.64	48.54
40	48.26	56.16
44	53.34	61.24
50	60.96	68.86
60	73.66	81.56
64	78.74	86.64

UNLESS TOLERANCE		DRAW	BY
GENERAL	ANGLE	DESIGN	BY
X. ± 0.30	X.° ± 3.0°	CHECK	BY
.X ± 0.25	.XX° ± 2.0°	APPROVE	BY
.XX ± 0.20	.XXX° ± 1.0°	SCALE	SHEET
.XXX ± 0.10	.XXXX ± 0.5°	UNIT	

SCALE	1:1	SHEET	1/1	UNIT	MM
-------	-----	-------	-----	------	----

Cnc Tech, LLC

Port NO.: 3040-XX-99

DRAW NO.: REV: A

