

## RMV | Disks for retaining magnets

Steel or stainless steel

METRIC

INOX  
STAINLESS  
STEEL

RoHS

### STANDARD EXECUTION

- **RMV-ST**: zinc-plated steel.
- **RMV-NI**: magnetic stainless steel.

### FEATURES AND APPLICATIONS

RMV disks serve to be coupled to different types of magnets where the attraction must occur between the retaining magnet and the surfaces of non-magnetic material.

They can be fixed with countersunk screws (DIN 7991).

## RMY | Disks for retaining magnets

adhesive tape

METRIC

RoHS

### STANDARD EXECUTIONS

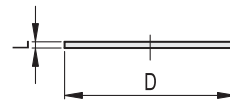
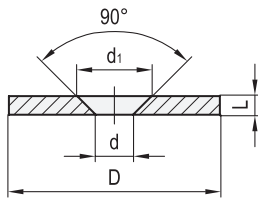
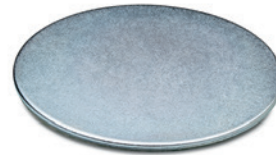
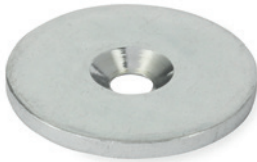
With adhesive tape

- **RMY**: zinc-plated steel.
- **RMY-WT**: RAL 9003 white lacquered steel.

### FEATURES AND APPLICATIONS

RMY disks are used to be coupled to different types of retaining magnets.

For a better adhesion of the adhesive tape, make sure that the surface on which it will be applied is perfectly clean.



### RMV-ST

METRIC

Code	Description	D	d	L	d1	△
503301	RMV-12-A-ST	12 ±0.1	4 +0.3	2	6.5 -0.2/+0.5	1
503303	RMV-17-A-ST	17 ±0.1	6 +0.3	2	8.5 +0.5	3
503305	RMV-27-A-ST	27 ±0.2	5.5 +1	3	11 +0.5	12
503307	RMV-34-A-ST	34 +0.3/+0.7	6 +0.3	3	11 +0.5	20
503309	RMV-45-A-ST	45 +0.1/+0.5	5.5 +0.3	2	11 +0.5	36
503311	RMV-64-A-ST	64 ±0.3	6 +0.3	3	11 +0.5	74

### RMY

METRIC

Code	Description	D	L	△
503261	RMY-20	20	2	5
503266	RMY-30	30	2	18
503271	RMY-40	40	2	25
503276	RMY-60	60	2.5	37

### RMV-NI

INOX  
STAINLESS  
STEEL

METRIC

Code	Description	D	d	L	d1	△
503315	RMV-27-A-NI	27 ±0.1/+0.5	5.5 +1	3	11 +0.05	12
503313	RMV-45-A-NI	45 ±0.2	6 ±0.3	2	8.5 +0.05	36

### RMY-WT

METRIC

Code	Description	D	L	△
503263	RMY-20-WT	20	2	5
503267	RMY-30-WT	30	2	18
503273	RMY-40-WT	40	2	25
503277	RMY-60-WT	60	2.5	37