



### SPECIFICATIONS

Model	Stroke mm	Max Absorption Energy J(kgf·m)	Max Equiv. Mass kg (kgf)	Max Drag N (kgf)	Range of Impact Rate m/s
FW-2025M-S	25	39.2(4.0)	87(87)	4900 (500)	0.3~2

Max. Cycle Rate cycle/min	Max. Absorption Energy per min. J/min(kgf·m/min)	Extension Force N(kgf)	Operating Temp. C°	Mass g
60	343(35)	24.5(2.5) or lower	-5~70	234

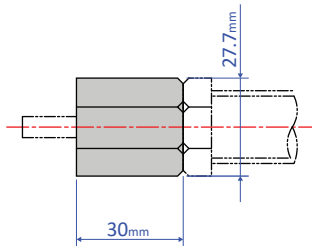
### PRECAUTIONS FOR USE

- Do not use this product without carefully reading the attached owner's manual.
- Ensure that sufficient mounting strength is secured for this product. (As a guideline, it should be 2 to 3 times the maximum drag listed in the catalogue.)
- It cannot absorb impact from both directions at the same time.
- Do not use this product in a vacuum or a location where it may come in contact with oil.
- Ensure that an eccentric load is not applied to the soft absorber. (Allowable eccentric angle:  $\pm 2.5^\circ$ )
- Ensure that an external stopper is also used.

### OPTIONAL PART

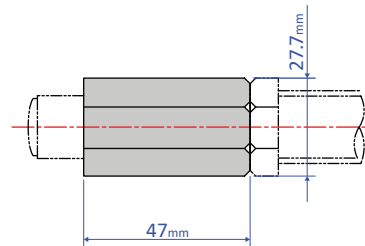
#### Stopper Nut OP-20EB

OP-020EB-S  
(without cap)



Mass: 46

OP-020EB-C  
(with cap)



Mass: 68

Standard nuts are sold separately as well – M20 nut