

THIS COPY IS PROVIDED ON A RESTRICTED BASIS AND IS NOT TO BE USED IN ANY WAY DETRIMENTAL TO THE INTERESTS OF PANDUIT CORP.

PANDUIT PART #	WIRE RANGE AWG [ mm <sup>2</sup> ]	TAB SIZE INCH [ mm ]	DIMENSIONS in. [ mm ]		
			L± .03 [ 0,8 ]	H± .01 [ 0,3 ]	W± .01 [ 0,3 ]
ED18-250	#22-18 [ 0,5-1,0 ]	.250 X .032 [ 6,3 X 0,8 ]	.66 [ 16,8 ]	.12 [ 3,0 ]	.30 [ 7,6 ]
ED14-250*	#16-14 [ 1,5-2,5 ]	.250 X .032 [ 6,3 X 0,8 ]	.66 [ 16,8 ]	.12 [ 3,0 ]	.30 [ 7,6 ]



LISTED  
20H3  
E78522



CERTIFIED  
LR31212

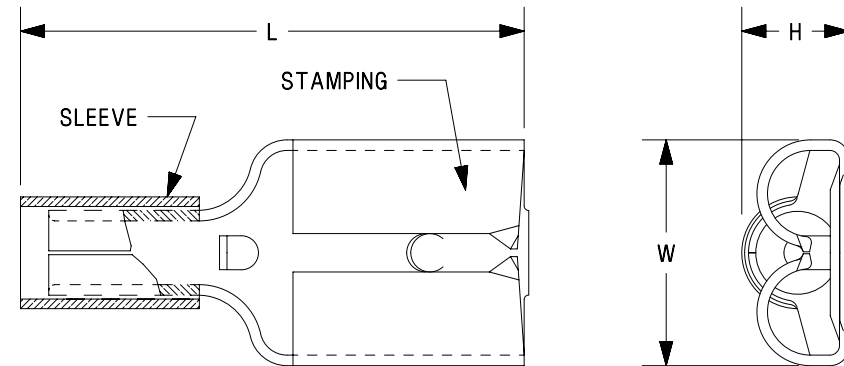


RECOGNIZED  
E78522

\* UL RECOGNIZED ONLY

NOTES:

- USED FOR:
  - STRANDED COPPER WIRE ONLY
  - 302°F [150°C] MAX OPERATING TEMPERATURE
  - 2000V MAX VOLTAGE
- MATERIAL:
  - STAMPING: .016 [ 0,41 ] TIN PLATED BRASS
  - SLEEVE: TIN PLATED BRASS
- INSTALLATION TOOLS:
  - UL LISTED AND CSA CERTIFIED:  
CT-100A, CT-200, CT-570, CT-1570, CT-2457CH, CT-2500 W/CT-2570CH
  - UL RECOGNIZED:  
CT-100A, CT-200, CT-600-A W/CT-570CH, CT-1570, CT-2457CH CT-2500 W/CT-2570CH
- WIRE STRIP LENGTH:  $9/32'' \begin{matrix} +1/32 \\ -0 \end{matrix} [7,1\text{mm} \begin{matrix} +0,8 \\ -0 \end{matrix}]$
- SEE WWW.PANDUIT.COM FOR PACKAGE QUANTITIES INDICATED BY PART NUMBER SUFFIX
- DIMENSIONS IN BRACKETS ARE METRIC EQUIVALENT



TITLE <b>STRONGHOLD FEMALE DISCONNECT (250 SERIES) NON-INSULATED, SLEEVED BARREL #22-14 AWG</b> CUSTOMER DRAWING				
ITEM REVISION NAME		00123SHD/00		
DATASET FILE NAME		00123SHD_DC_00A		
UNLESS OTHERWISE SPECIFIED, DIMENSIONAL TOLERANCES ARE: IN [ mm ]		MATERIAL:		
.x ± .1 [ 2.54 ] .xx ± .01 [ .25 ]		SEE NOTES		
.xxx ± .005 [ .127 ] ANGLES ± 5 °		DRAWING NUMBER: SH41304		
THIRD ANGLE PROJECTION		DRAWN BY	DATE	SCALE
TMR		10.10.17	JHNU	N.T.S.
REV	DATE	BY	CHK	SCALE
00	10.10.17	TMR	JHNU	N.T.S.
DESCRIPTION				SIZE
DRAWING RELEASED				A

REV	DATE	BY	CHK	APR	DESCRIPTION	ECN
00	10.10.17	TMR	JHNU	RGB	DRAWING RELEASED	00123SH

D10100DA/12