

# I.622 | Tapered handles

Technopolymer

INCH



PA



- 1
- 2
- 3
- 4
- 5
- 6
- 7
- 8
- 9
- 10
- 11
- 12
- 13
- 14
- 15
- 16
- 17
- 18

## MATERIAL

Polyamide based (PA) technopolymer, black colour, glossy finish.

## STANDARD EXECUTION

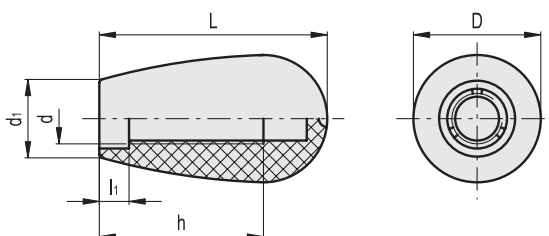
Threaded blind hole.

## SPECIAL EXECUTIONS ON REQUEST

Different RAL colours.



ELESA Original design



INCH

| Code   | Description      | D    | L    | d       | d1   | h    | l1   | ⚖️   |
|--------|------------------|------|------|---------|------|------|------|------|
| 920911 | I.622/25-1/4-20  | 0.63 | 0.98 | 1/4-20  | 0.47 | 0.63 | 0.14 | 0.01 |
| 920921 | I.622/30-5/16-18 | 0.79 | 1.26 | 5/16-18 | 0.55 | 0.79 | 0.14 | 0.02 |
| 920931 | I.622/40-3/8-16  | 1.02 | 1.65 | 3/8-16  | 0.67 | 1.18 | 0.2  | 0.04 |
| 920941 | I.622/55-1/2-13  | 1.34 | 2.15 | 1/2-13  | 0.83 | 1.38 | 0.31 | 0.07 |

Fixed & Revolving handles