



- 1
- 2
- 3
- 4
- 5
- 6
- 7
- 8
- 9
- 10
- 11
- 12
- 13
- 14
- 15
- 16
- 17
- 18

MATERIAL

High-resilience polypropylene based (PP) technopolymer, black colour, matte finish.

VCT.25: glass-fibre reinforced polyamide based (PA) technopolymer, black colour, matte finish.

BOSS CAP

- CA.VCT: polypropylene-based (PP) technopolymer, in Elecolors colours, matte finish, press-fit assembly. Supplied. Not available for VCT.25.

Available also as accessory sold separately (see table).

STANDARD EXECUTIONS

- **VCT-A:** black-oxide steel boss, plain blind hole.
- **VCT-B:** brass boss, threaded blind hole (VCT.25 - 95) or threaded pass-through hole (VCT.32 - 40 - 50 - 63 - 74 - 84).
- **VCT-AZ:** zinc-plated steel boss, threaded pass-through hole.
- **VCT-SST:** AISI 303 stainless steel boss, threaded blind hole (VCT.25) or threaded pass-through hole (VCT.32 - 40 - 50 - 63 - 74 - 84).
- **VCT.FP:** brass boss, threaded pass-through hole, without cap.
- **VCT-AZ-FP:** zinc-plated steel boss, threaded pass-through hole, without cap.
- **VCT-SST-FP:** AISI 303 stainless steel boss, threaded pass-through hole, without cap.
- **VCT-p:** zinc-plated steel threaded stud, chamfered flat end according to UNI 947 : ISO 4753 (see Technical data on page A-11).
- **VCT-SST-p:** AISI 303 stainless steel threaded stud, chamfered flat end according to UNI 947 : ISO 4753 (see Technical data on page A-11).

ACCESSORIES ON REQUEST

- CA.VCT: polypropylene-based (PP) technopolymer boss cap, in Elecolors colours, matte finish, press-fit assembly, not available for VCT.25 (see table). For sufficient quantities, it can be supplied in other colours or with customised graphic symbols, marks or writings.



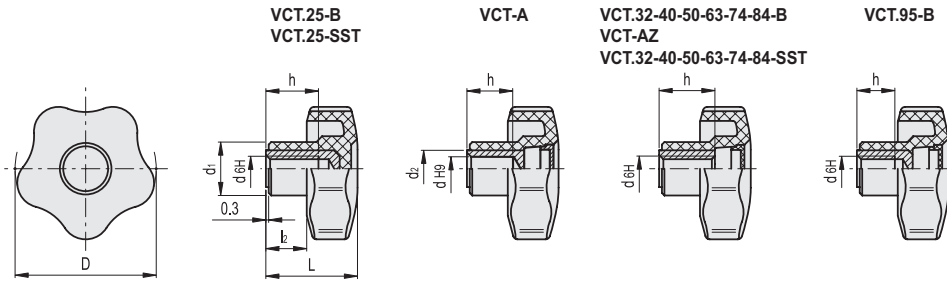
ELESA Original design



CA.VCT

| Cap for | C9 | C2 | C3 | C4 | C5 | C6 | C17 | Description |
|--------------|------|------|------|------|------|------|------|------------------|
| VCT.32 | 6900 | 6903 | 6904 | 6905 | 6906 | 6901 | 6907 | CA.VCT.32.* |
| VCT.40 | 6910 | 6913 | 6914 | 6915 | 6916 | 6911 | 6917 | CA.VCT.40.* |
| VCT.50 | 6920 | 6923 | 6924 | 6925 | 6926 | 6921 | 6927 | CA.VCT.50.* |
| VCT.63-74-95 | 6930 | 6933 | 6934 | 6935 | 6936 | 6931 | 6937 | CA.VCT.63-74-95* |
| VCT.84 | 6980 | 6983 | 6984 | 6985 | 6986 | 6981 | 6987 | CA.VCT.84.* |

* Complete with colour index (C9, ..., C17).



* Complete with colour index, example: 69841-C2 VCT.32 A-6-C2



VCT-A

| Code | Description | D | dH9 | L | d1 | d2 | l2 | h | ⚖️ |
|---------|---------------|----|-----|------|----|----|----|----|----|
| 69841-* | VCT.32 A-6-* | 32 | 6 | 23 | 15 | 12 | 10 | 12 | 34 |
| 69892-* | VCT.40 A-8-* | 40 | 8 | 27 | 17 | 12 | 12 | 14 | 36 |
| 69951-* | VCT.50 A-8-* | 50 | 8 | 32 | 19 | 12 | 14 | 14 | 37 |
| 69952-* | VCT.50 A-10-* | 50 | 10 | 32 | 19 | 15 | 14 | 16 | 34 |
| 70001-* | VCT.63 A-8-* | 63 | 8 | 37 | 22 | 15 | 16 | 20 | 52 |
| 70002-* | VCT.63 A-10-* | 63 | 10 | 37 | 22 | 16 | 16 | 21 | 49 |
| 70003-* | VCT.63 A-12-* | 63 | 12 | 37 | 22 | 16 | 16 | 21 | 48 |
| 70051-* | VCT.74 A-8-* | 74 | 8 | 43.5 | 26 | 15 | 22 | 20 | 65 |
| 70053-* | VCT.74 A-12-* | 74 | 12 | 43.5 | 26 | 15 | 22 | 20 | 62 |
| 70055-* | VCT.74 A-16-* | 74 | 16 | 43.5 | 26 | 20 | 22 | 20 | 60 |
| 70123-* | VCT.84 A-12-* | 84 | 12 | 44 | 28 | 20 | 21 | 25 | 91 |
| 70125-* | VCT.84 A-16-* | 84 | 16 | 44 | 28 | 20 | 21 | 25 | 93 |



* Complete with colour index, example: 69843-C2 VCT.32 B-M5-C2



C9

RAL9005



C2

RAL2004



C3

RAL7035



C4

RAL1021



C5

RAL5024



C6

RAL3000



C17

RAL6017

VCT-B

METRIC

| Code | Description | D | d6H | L | d1 | l2 | h | C# [Nm] | ⚖ |
|----------|----------------|----|-----|------|----|----|----|------------|-----|
| 69811-C9 | VCT.25 B-M4-C9 | 25 | M4 | 19 | 13 | 8 | 10 | 6 | 7 |
| 69812-C9 | VCT.25 B-M5-C9 | 25 | M5 | 19 | 13 | 8 | 10 | 7 | 6 |
| 69813-C9 | VCT.25 B-M6-C9 | 25 | M6 | 19 | 13 | 8 | 10 | 7 | 5 |
| 69843.* | VCT.32 B-M5.* | 32 | M5 | 23 | 15 | 10 | 12 | 10 | 11 |
| 69844.* | VCT.32 B-M6.* | 32 | M6 | 23 | 15 | 10 | 12 | 10 | 10 |
| 69845.* | VCT.32 B-M8.* | 32 | M8 | 23 | 15 | 10 | 12 | 10 | 9 |
| 69893.* | VCT.40 B-M6.* | 40 | M6 | 27 | 17 | 12 | 18 | 16 | 26 |
| 69894.* | VCT.40 B-M8.* | 40 | M8 | 27 | 17 | 12 | 18 | 18 | 24 |
| 69895.* | VCT.40 B-M10.* | 40 | M10 | 27 | 17 | 12 | 17 | 18 | 23 |
| 69953.* | VCT.50 B-M8.* | 50 | M8 | 32 | 19 | 14 | 20 | 25 | 38 |
| 69954.* | VCT.50 B-M10.* | 50 | M10 | 32 | 19 | 14 | 20 | 27 | 34 |
| 69955.* | VCT.50 B-M12.* | 50 | M12 | 32 | 19 | 14 | 20 | 27 | 30 |
| 70012.* | VCT.63 B-M8.* | 63 | M8 | 37 | 22 | 16 | 26 | 48 | 45 |
| 70013.* | VCT.63 B-M10.* | 63 | M10 | 37 | 22 | 16 | 26 | 50 | 42 |
| 70014.* | VCT.63 B-M12.* | 63 | M12 | 37 | 22 | 16 | 26 | 50 | 40 |
| 70062.* | VCT.74 B-M12.* | 74 | M12 | 43.5 | 26 | 22 | 26 | 60 | 57 |
| 70063.* | VCT.74 B-M14.* | 74 | M14 | 43.5 | 26 | 22 | 26 | 65 | 53 |
| 70064.* | VCT.74 B-M16.* | 74 | M16 | 43.5 | 26 | 22 | 31 | 69 | 55 |
| 70133.* | VCT.84 B-M12.* | 84 | M12 | 44 | 28 | 21 | 25 | 65 | 91 |
| 70135.* | VCT.84 B-M16.* | 84 | M16 | 44 | 28 | 21 | 25 | 75 | 93 |
| 70097.* | VCT.95 B-M16.* | 95 | M16 | 46 | 32 | 21 | 22 | 100 | 109 |

VCT-AZ

| Code | Description | D | d6H | L | d1 | l2 | h | C# [Nm] | ⚖ |
|----------|------------------|----|-----|------|----|----|----|------------|----|
| 69741-C9 | VCT.32 AZ-M4-C9 | 32 | M4 | 23 | 15 | 10 | 12 | 10 | 12 |
| 69742-C9 | VCT.32 AZ-M5-C9 | 32 | M5 | 23 | 15 | 10 | 12 | 10 | 11 |
| 69743-C9 | VCT.32 AZ-M6-C9 | 32 | M6 | 23 | 15 | 10 | 12 | 10 | 10 |
| 69752-C9 | VCT.40 AZ-M6-C9 | 40 | M6 | 27 | 17 | 12 | 18 | 16 | 26 |
| 69753-C9 | VCT.40 AZ-M8-C9 | 40 | M8 | 27 | 17 | 12 | 18 | 18 | 24 |
| 69761-C9 | VCT.50 AZ-M8-C9 | 50 | M8 | 32 | 19 | 14 | 20 | 25 | 38 |
| 69762-C9 | VCT.50 AZ-M10-C9 | 50 | M10 | 32 | 19 | 14 | 20 | 27 | 34 |
| 69772-C9 | VCT.63 AZ-M10-C9 | 63 | M10 | 37 | 22 | 16 | 26 | 50 | 42 |
| 69773-C9 | VCT.63 AZ-M12-C9 | 63 | M12 | 37 | 22 | 16 | 26 | 50 | 40 |
| 69782-C9 | VCT.74 AZ-M12-C9 | 74 | M12 | 43.5 | 26 | 22 | 26 | 60 | 57 |
| 69784-C9 | VCT.74 AZ-M16-C9 | 74 | M16 | 43.5 | 26 | 22 | 31 | 69 | 55 |
| 69794-C9 | VCT.84 AZ-M16-C9 | 84 | M16 | 44 | 28 | 21 | 25 | 75 | 93 |

VCT-SST

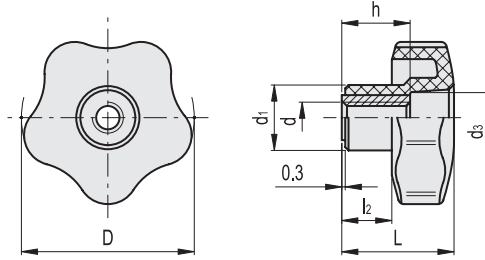
INOX STAINLESS STEEL METRIC

| Code | Description | D | d6H | L | d1 | l2 | h | C# [Nm] | ⚖ |
|----------|------------------|----|-----|------|----|----|----|------------|----|
| 69807-C9 | VCT.25-SST-M4-C9 | 25 | M4 | 19 | 13 | 8 | 10 | 7 | 6 |
| 69873.* | VCT.32-SST-M5.* | 32 | M5 | 23 | 15 | 10 | 12 | 10 | 11 |
| 69874.* | VCT.32-SST-M6.* | 32 | M6 | 23 | 15 | 10 | 12 | 10 | 10 |
| 69941.* | VCT.40-SST-M6.* | 40 | M6 | 27 | 17 | 12 | 18 | 16 | 26 |
| 69943.* | VCT.40-SST-M8.* | 40 | M8 | 27 | 17 | 12 | 18 | 18 | 24 |
| 69991.* | VCT.50-SST-M8.* | 50 | M8 | 32 | 19 | 14 | 20 | 27 | 39 |
| 69993.* | VCT.50-SST-M10.* | 50 | M10 | 32 | 19 | 14 | 20 | 27 | 35 |
| 70005.* | VCT.63-SST-M10.* | 63 | M10 | 37 | 22 | 16 | 26 | 50 | 43 |
| 70006.* | VCT.63-SST-M12.* | 63 | M12 | 37 | 22 | 16 | 26 | 50 | 41 |
| 70056.* | VCT.74-SST-M12.* | 74 | M12 | 43.5 | 26 | 22 | 26 | 60 | 58 |
| 70183.* | VCT.84-SST-M16.* | 84 | M16 | 44 | 28 | 21 | 25 | 75 | 94 |

"Max limit Tightening torque" means the max torque value at which the metal insert, in normal conditions of use, is perfectly and strongly anchored to the plastic material.

- 1
- 2
- 3
- 4
- 5
- 6
- 7
- 8
- 9
- 10
- 11
- 12
- 13
- 14
- 15
- 16
- 17
- 18

VCT-FP
VCT-AZ-FP
VCT-SST-FP



| Conversion Table 1 mm = 0,039 inch | | | |
|---------------------------------------|------|----|------|
| D | | | |
| mm | inch | mm | inch |
| 25 | 0.98 | 63 | 2.48 |
| 32 | 1.26 | 74 | 2.91 |
| 40 | 1.57 | 84 | 3.31 |
| 50 | 1.97 | 95 | 3.74 |

METRIC

VCT-FP

| Code | Description | D | d6H | L | d1 | d3 | l2 | h | ⚖ |
|-------|---------------|----|-----|------|----|----|----|----|----|
| 69847 | VCT.32 FP-M5 | 32 | M5 | 23 | 15 | 10 | 10 | 12 | 11 |
| 69848 | VCT.32 FP-M6 | 32 | M6 | 23 | 15 | 10 | 10 | 12 | 10 |
| 69849 | VCT.32 FP-M8 | 32 | M8 | 23 | 15 | 10 | 10 | 12 | 9 |
| 69897 | VCT.40 FP-M6 | 40 | M6 | 27 | 17 | 12 | 12 | 18 | 26 |
| 69898 | VCT.40 FP-M8 | 40 | M8 | 27 | 17 | 12 | 12 | 18 | 24 |
| 69899 | VCT.40 FP-M10 | 40 | M10 | 27 | 17 | 12 | 12 | 17 | 23 |
| 69956 | VCT.50 FP-M8 | 50 | M8 | 32 | 19 | 15 | 14 | 20 | 38 |
| 69957 | VCT.50 FP-M10 | 50 | M10 | 32 | 19 | 15 | 14 | 20 | 34 |
| 69958 | VCT.50 FP-M12 | 50 | M12 | 32 | 19 | 15 | 14 | 20 | 30 |
| 70016 | VCT.63 FP-M8 | 63 | M8 | 37 | 22 | 19 | 16 | 26 | 44 |
| 70017 | VCT.63 FP-M10 | 63 | M10 | 37 | 22 | 19 | 16 | 26 | 42 |
| 70018 | VCT.63 FP-M12 | 63 | M12 | 37 | 22 | 19 | 16 | 26 | 40 |
| 70067 | VCT.74 FP-M12 | 74 | M12 | 43.5 | 26 | 17 | 22 | 26 | 56 |
| 70068 | VCT.74 FP-M14 | 74 | M14 | 43.5 | 26 | 17 | 22 | 26 | 52 |
| 70069 | VCT.74 FP-M16 | 74 | M16 | 43.5 | 26 | 17 | 22 | 31 | 54 |
| 70143 | VCT.84 FP-M12 | 84 | M12 | 44 | 28 | 24 | 21 | 25 | 92 |
| 70145 | VCT.84 FP-M16 | 84 | M16 | 44 | 28 | 24 | 21 | 25 | 91 |

VCT-AZ-FP

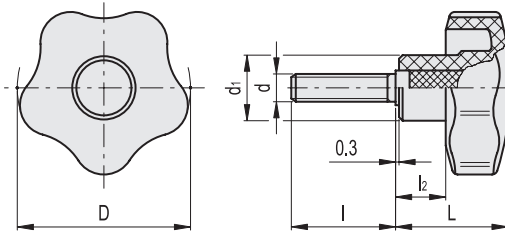
| Code | Description | D | d6H | L | d1 | d3 | l2 | h | ⚖ |
|-------|------------------|----|-----|------|----|----|----|----|----|
| 69746 | VCT.32 AZ-FP-M6 | 32 | M6 | 23 | 15 | 10 | 10 | 12 | 10 |
| 69756 | VCT.40 AZ-FP-M8 | 40 | M8 | 27 | 17 | 12 | 12 | 18 | 26 |
| 69766 | VCT.50 AZ-FP-M8 | 50 | M8 | 32 | 19 | 15 | 14 | 20 | 38 |
| 69767 | VCT.50 AZ-FP-M10 | 50 | M10 | 32 | 19 | 15 | 14 | 20 | 34 |
| 69776 | VCT.63 AZ-FP-M12 | 63 | M12 | 37 | 22 | 19 | 16 | 26 | 40 |
| 69786 | VCT.74 AZ-FP-M12 | 74 | M12 | 43.5 | 26 | 17 | 22 | 31 | 56 |
| 69796 | VCT.84 AZ-FP-M16 | 84 | M16 | 44 | 28 | 24 | 21 | 25 | 92 |

VCT-SST-FP

INOX STAINLESS STEEL METRIC

| Code | Description | D | d6H | L | d1 | d3 | l2 | h | ⚖ |
|-------|-------------------|----|-----|------|----|----|----|----|----|
| 69877 | VCT.32-SST-FP-M5 | 32 | M5 | 23 | 15 | 10 | 10 | 12 | 12 |
| 69878 | VCT.32-SST-FP-M6 | 32 | M6 | 23 | 15 | 10 | 10 | 12 | 13 |
| 69942 | VCT.40-SST-FP-M6 | 40 | M6 | 27 | 17 | 12 | 12 | 18 | 27 |
| 69944 | VCT.40-SST-FP-M8 | 40 | M8 | 27 | 17 | 12 | 12 | 18 | 25 |
| 69992 | VCT.50-SST-FP-M8 | 50 | M8 | 32 | 19 | 15 | 14 | 20 | 39 |
| 69994 | VCT.50-SST-FP-M10 | 50 | M10 | 32 | 19 | 15 | 14 | 20 | 35 |
| 70007 | VCT.63-SST-FP-M10 | 63 | M10 | 37 | 22 | 19 | 16 | 26 | 43 |
| 70008 | VCT.63-SST-FP-M12 | 63 | M12 | 37 | 22 | 19 | 16 | 26 | 41 |
| 70057 | VCT.74-SST-FP-M12 | 74 | M12 | 43.5 | 26 | 17 | 22 | 26 | 57 |
| 70185 | VCT.84-SST-FP-M16 | 84 | M16 | 44 | 28 | 24 | 21 | 25 | 92 |

| Conversion Table 1 mm = 0,039 inch | | | |
|---------------------------------------|------|----|------|
| D | | | |
| mm | inch | mm | inch |
| 25 | 0.98 | 63 | 2.48 |
| 32 | 1.26 | 74 | 2.91 |
| 40 | 1.57 | 84 | 3.31 |
| 50 | 1.97 | 95 | 3.74 |



* Complete with colour index, example: 69872-C2 VCT.32 p-M5x20-C2

| | | | | | | |
|-----------|-----------|-----------|-----------|-----------|-----------|------------|
| C9 | C2 | C3 | C4 | C5 | C6 | C17 |
| RAL9005 | RAL2004 | RAL7035 | RAL1021 | RAL5024 | RAL3000 | RAL6017 |

VCT-p

METRIC

| Code | Description | D | d6g | L | d1 | l | l2 | C# | Δ |
|----------|-------------------|----|-----|----|----|----|----|-----|-----|
| 69816-C9 | VCT.25 p-M4x6-C9 | 25 | M4 | 19 | 13 | 6 | 8 | 5 | 5 |
| 69817-C9 | VCT.25 p-M4x10-C9 | 25 | M4 | 19 | 13 | 10 | 8 | 5 | 6 |
| 69821-C9 | VCT.25 p-M5x10-C9 | 25 | M5 | 19 | 13 | 10 | 8 | 6 | 7 |
| 69822-C9 | VCT.25 p-M5x16-C9 | 25 | M5 | 19 | 13 | 16 | 8 | 6 | 8 |
| 69823-C9 | VCT.25 p-M5x20-C9 | 25 | M5 | 19 | 13 | 20 | 8 | 6 | 9 |
| 69824-C9 | VCT.25 p-M5x25-C9 | 25 | M5 | 19 | 13 | 25 | 8 | 6 | 10 |
| 69825-C9 | VCT.25 p-M5x30-C9 | 25 | M5 | 19 | 13 | 30 | 8 | 6 | 12 |
| 69826-C9 | VCT.25 p-M5x40-C9 | 25 | M5 | 19 | 13 | 40 | 8 | 6 | 14 |
| 69831-C9 | VCT.25 p-M6x10-C9 | 25 | M6 | 19 | 13 | 10 | 8 | 6 | 8 |
| 69832-C9 | VCT.25 p-M6x16-C9 | 25 | M6 | 19 | 13 | 16 | 8 | 6 | 9 |
| 69833-C9 | VCT.25 p-M6x20-C9 | 25 | M6 | 19 | 13 | 20 | 8 | 6 | 10 |
| 69835-C9 | VCT.25 p-M6x25-C9 | 25 | M6 | 19 | 13 | 25 | 8 | 6 | 11 |
| 69834-C9 | VCT.25 p-M6x30-C9 | 25 | M6 | 19 | 13 | 30 | 8 | 6 | 13 |
| 69836-C9 | VCT.25 p-M6x40-C9 | 25 | M6 | 19 | 13 | 40 | 8 | 6 | 15 |
| 69872-* | VCT.32 p-M5x20-* | 32 | M5 | 23 | 15 | 20 | 10 | 6 | 13 |
| 69851-* | VCT.32 p-M6x16-* | 32 | M6 | 23 | 15 | 16 | 10 | 8 | 13 |
| 69852-* | VCT.32 p-M6x20-* | 32 | M6 | 23 | 15 | 20 | 10 | 8 | 14 |
| 69853-* | VCT.32 p-M6x25-* | 32 | M6 | 23 | 15 | 25 | 10 | 8 | 15 |
| 69854-* | VCT.32 p-M6x30-* | 32 | M6 | 23 | 15 | 30 | 10 | 8 | 16 |
| 69855-* | VCT.32 p-M6x35-* | 32 | M6 | 23 | 15 | 35 | 10 | 8 | 17 |
| 69856-* | VCT.32 p-M6x40-* | 32 | M6 | 23 | 15 | 40 | 10 | 8 | 18 |
| 69857-* | VCT.32 p-M6x45-* | 32 | M6 | 23 | 15 | 45 | 10 | 8 | 19 |
| 69858-* | VCT.32 p-M6x50-* | 32 | M6 | 23 | 15 | 50 | 10 | 8 | 20 |
| 69860-* | VCT.32 p-M6x60-* | 32 | M6 | 23 | 15 | 60 | 10 | 8 | 21 |
| 69859-* | VCT.32 p-M8x16-* | 32 | M8 | 23 | 15 | 16 | 10 | 8 | 14 |
| 69861-* | VCT.32 p-M8x20-* | 32 | M8 | 23 | 15 | 20 | 10 | 8 | 18 |
| 69863-* | VCT.32 p-M8x30-* | 32 | M8 | 23 | 15 | 30 | 10 | 8 | 21 |
| 69865-* | VCT.32 p-M8x40-* | 32 | M8 | 23 | 15 | 40 | 10 | 8 | 24 |
| 69867-* | VCT.32 p-M8x50-* | 32 | M8 | 23 | 15 | 50 | 10 | 8 | 26 |
| 69901-* | VCT.40 p-M6x20-* | 40 | M6 | 27 | 17 | 20 | 12 | 13 | 18 |
| 69902-* | VCT.40 p-M6x25-* | 40 | M6 | 27 | 17 | 25 | 12 | 13 | 19 |
| 69903-* | VCT.40 p-M6x30-* | 40 | M6 | 27 | 17 | 30 | 12 | 13 | 20 |
| 69911-* | VCT.40 p-M8x16-* | 40 | M8 | 27 | 17 | 16 | 12 | 16 | 23 |
| 69912-* | VCT.40 p-M8x20-* | 40 | M8 | 27 | 17 | 20 | 12 | 16 | 24 |
| 69913-* | VCT.40 p-M8x25-* | 40 | M8 | 27 | 17 | 25 | 12 | 16 | 26 |
| 69914-* | VCT.40 p-M8x30-* | 40 | M8 | 27 | 17 | 30 | 12 | 16 | 27 |
| 69915-* | VCT.40 p-M8x35-* | 40 | M8 | 27 | 17 | 35 | 12 | 16 | 28 |
| 69916-* | VCT.40 p-M8x40-* | 40 | M8 | 27 | 17 | 40 | 12 | 16 | 30 |
| 69917-* | VCT.40 p-M8x45-* | 40 | M8 | 27 | 17 | 45 | 12 | 16 | 32 |
| 69918-* | VCT.40 p-M8x50-* | 40 | M8 | 27 | 17 | 50 | 12 | 16 | 35 |
| 69919-* | VCT.40 p-M8x55-* | 40 | M8 | 27 | 17 | 55 | 12 | 16 | 36 |
| 69922-* | VCT.40 p-M8x70-* | 40 | M8 | 28 | 17 | 70 | 12 | 16 | 40 |
| 70155-* | VCT.84 p-M12x50-* | 84 | M12 | 44 | 28 | 50 | 21 | 80 | 99 |
| 70157-* | VCT.84 p-M12x70-* | 84 | M12 | 44 | 28 | 70 | 21 | 80 | 113 |
| 70173-* | VCT.84 p-M16x30-* | 84 | M16 | 44 | 28 | 30 | 21 | 85 | 131 |
| 70175-* | VCT.84 p-M16x40-* | 84 | M16 | 44 | 28 | 40 | 21 | 85 | 141 |
| 70177-* | VCT.84 p-M16x50-* | 84 | M16 | 44 | 28 | 50 | 21 | 85 | 157 |
| 70179-* | VCT.84 p-M16x60-* | 84 | M16 | 44 | 28 | 60 | 21 | 85 | 170 |
| 70181-* | VCT.84 p-M16x70-* | 84 | M16 | 44 | 28 | 70 | 21 | 85 | 185 |
| 70099-* | VCT.95 p-M16x50-* | 95 | M16 | 46 | 32 | 50 | 21 | 138 | 175 |

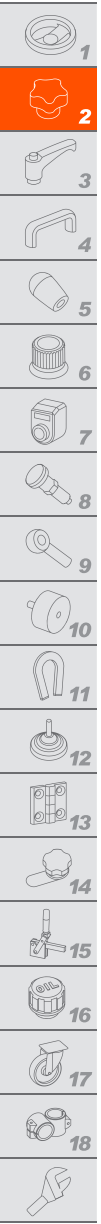
VCT-p

METRIC

| Code | Description | D | d6g | L | d1 | l | l2 | C# | Δ |
|---------|-------------------|----|-----|----|----|----|----|-----|-----|
| 69931-* | VCT.40 p-M10x20-* | 40 | M10 | 27 | 17 | 20 | 12 | 18 | 26 |
| 69933-* | VCT.40 p-M10x25-* | 40 | M10 | 27 | 17 | 25 | 12 | 18 | 28 |
| 69935-* | VCT.40 p-M10x30-* | 40 | M10 | 27 | 17 | 30 | 12 | 18 | 30 |
| 69937-* | VCT.40 p-M10x40-* | 40 | M10 | 27 | 17 | 40 | 12 | 18 | 32 |
| 69939-* | VCT.40 p-M10x50-* | 40 | M10 | 27 | 17 | 50 | 12 | 18 | 34 |
| 69960-* | VCT.50 p-M8x16-* | 50 | M8 | 32 | 19 | 16 | 14 | 16 | 26 |
| 69961-* | VCT.50 p-M8x20-* | 50 | M8 | 32 | 19 | 20 | 14 | 16 | 28 |
| 69962-* | VCT.50 p-M8x25-* | 50 | M8 | 32 | 19 | 25 | 14 | 16 | 30 |
| 69963-* | VCT.50 p-M8x30-* | 50 | M8 | 32 | 19 | 30 | 14 | 16 | 31 |
| 69965-* | VCT.50 p-M8x40-* | 50 | M8 | 32 | 19 | 40 | 14 | 16 | 33 |
| 69967-* | VCT.50 p-M8x50-* | 50 | M8 | 32 | 19 | 50 | 14 | 16 | 35 |
| 69970-* | VCT.50 p-M10x16-* | 50 | M10 | 32 | 19 | 16 | 14 | 23 | 34 |
| 69971-* | VCT.50 p-M10x20-* | 50 | M10 | 32 | 19 | 20 | 14 | 23 | 36 |
| 69972-* | VCT.50 p-M10x25-* | 50 | M10 | 32 | 19 | 25 | 14 | 23 | 39 |
| 69973-* | VCT.50 p-M10x30-* | 50 | M10 | 32 | 19 | 30 | 14 | 23 | 41 |
| 69974-* | VCT.50 p-M10x35-* | 50 | M10 | 32 | 19 | 35 | 14 | 23 | 43 |
| 69975-* | VCT.50 p-M10x40-* | 50 | M10 | 32 | 19 | 40 | 14 | 23 | 46 |
| 69976-* | VCT.50 p-M10x45-* | 50 | M10 | 32 | 19 | 45 | 14 | 23 | 48 |
| 69977-* | VCT.50 p-M10x50-* | 50 | M10 | 32 | 19 | 50 | 14 | 23 | 51 |
| 69978-* | VCT.50 p-M10x55-* | 50 | M10 | 32 | 19 | 55 | 14 | 23 | 53 |
| 69979-* | VCT.50 p-M10x60-* | 50 | M10 | 32 | 19 | 60 | 14 | 23 | 55 |
| 69981-* | VCT.50 p-M12x20-* | 50 | M12 | 32 | 19 | 20 | 14 | 25 | 39 |
| 69983-* | VCT.50 p-M12x30-* | 50 | M12 | 32 | 19 | 30 | 14 | 25 | 44 |
| 69985-* | VCT.50 p-M12x40-* | 50 | M12 | 32 | 19 | 40 | 14 | 25 | 49 |
| 69987-* | VCT.50 p-M12x50-* | 50 | M12 | 32 | 19 | 50 | 14 | 25 | 54 |
| 69989-* | VCT.50 p-M12x60-* | 50 | M12 | 32 | 19 | 60 | 14 | 25 | 59 |
| 70021-* | VCT.63 p-M10x20-* | 63 | M10 | 37 | 22 | 20 | 16 | 37 | 54 |
| 70023-* | VCT.63 p-M10x30-* | 63 | M10 | 37 | 22 | 30 | 16 | 37 | 59 |
| 70025-* | VCT.63 p-M10x40-* | 63 | M10 | 37 | 22 | 40 | 16 | 37 | 64 |
| 70027-* | VCT.63 p-M10x50-* | 63 | M10 | 37 | 22 | 50 | 16 | 37 | 69 |
| 70029-* | VCT.63 p-M10x60-* | 63 | M10 | 37 | 22 | 60 | 16 | 37 | 74 |
| 70030-* | VCT.63 p-M12x20-* | 63 | M12 | 37 | 22 | 20 | 16 | 46 | 65 |
| 70031-* | VCT.63 p-M12x25-* | 63 | M12 | 37 | 22 | 25 | 16 | 46 | 67 |
| 70032-* | VCT.63 p-M12x30-* | 63 | M12 | 37 | 22 | 30 | 16 | 46 | 67 |
| 70034-* | VCT.63 p-M12x35-* | 63 | M12 | 37 | 22 | 35 | 16 | 46 | 70 |
| 70033-* | VCT.63 p-M12x40-* | 63 | M12 | 37 | 22 | 40 | 16 | 46 | 73 |
| 70036-* | VCT.63 p-M12x50-* | 63 | M12 | 37 | 22 | 50 | 16 | 46 | 79 |
| 70155-* | VCT.84 p-M12x50-* | 84 | M12 | 44 | 28 | 50 | 21 | 80 | 99 |
| 70157-* | VCT.84 p-M12x70-* | 84 | M12 | 44 | 28 | 70 | 21 | 80 | 113 |
| 70173-* | VCT.84 p-M16x30-* | 84 | M16 | 44 | 28 | 30 | 21 | 85 | 131 |
| 70175-* | VCT.84 p-M16x40-* | 84 | M16 | 44 | 28 | 40 | 21 | 85 | 141 |
| 70177-* | VCT.84 p-M16x50-* | 84 | M16 | 44 | 28 | 50 | 21 | 85 | 157 |
| 70179-* | VCT.84 p-M16x60-* | 84 | M16 | 44 | 28 | 60 | 21 | 85 | 170 |
| 70181-* | VCT.84 p-M16x70-* | 84 | M16 | 44 | 28 | 70 | 21 | 85 | 185 |
| 70099-* | VCT.95 p-M16x50-* | 95 | M16 | 46 | 32 | 50 | 21 | 138 | 175 |

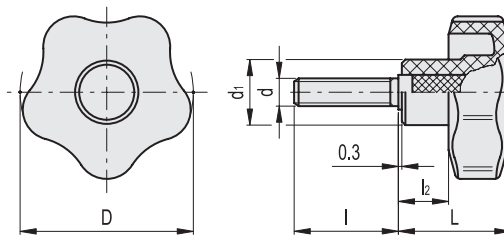
"Max limit Tightening torque" means the max torque value at which the metal insert, in normal conditions of use, is perfectly and strongly anchored to the plastic material.





| Conversion Table | | | |
|-------------------|------|----|------|
| 1 mm = 0,039 inch | | | |
| D | | | |
| mm | inch | mm | inch |
| 25 | 0.98 | 63 | 2.48 |
| 32 | 1.26 | 74 | 2.91 |
| 40 | 1.57 | 84 | 3.31 |
| 50 | 1.97 | 95 | 3.74 |

VCT-p
VCT-SST-p



* Complete with colour index, example: 69881-C2 VCT.32-SST-p-M6x16-C2

- C9
RAL9005
- C2
RAL2004
- C3
RAL7035
- C4
RAL1021
- C5
RAL5024
- C6
RAL3000
- C17
RAL6017

VCT-p

| | | METRIC | | | | | | |
|---------|-------------------|---------------|-----|------|----|----|----|------------|
| Code | Description | D | d6g | L | d1 | l | l2 | C# [Nm] |
| 70083-* | VCT.74 p-M12x30-* | 74 | M12 | 43.5 | 26 | 30 | 22 | 68 86 |
| 70085-* | VCT.74 p-M12x50-* | 74 | M12 | 43.5 | 26 | 50 | 22 | 68 98 |
| 70087-* | VCT.74 p-M12x70-* | 74 | M12 | 43.5 | 26 | 70 | 22 | 68 110 |
| 70095-* | VCT.74 p-M14x50-* | 74 | M14 | 43.5 | 26 | 50 | 22 | 78 106 |
| 70089-* | VCT.74 p-M16x30-* | 74 | M16 | 43.5 | 26 | 30 | 22 | 80 132 |
| 70090-* | VCT.74 p-M16x40-* | 74 | M16 | 43.5 | 26 | 40 | 22 | 80 144 |
| 70091-* | VCT.74 p-M16x50-* | 74 | M16 | 43.5 | 26 | 50 | 22 | 80 156 |
| 70092-* | VCT.74 p-M16x60-* | 74 | M16 | 43.5 | 26 | 60 | 22 | 80 168 |
| 70093-* | VCT.74 p-M16x70-* | 74 | M16 | 43.5 | 26 | 70 | 22 | 80 180 |
| 70153-* | VCT.84 p-M12x30-* | 84 | M12 | 44 | 28 | 30 | 21 | 80 84 |
| 70155-* | VCT.84 p-M12x50-* | 84 | M12 | 44 | 28 | 50 | 21 | 80 99 |
| 70157-* | VCT.84 p-M12x70-* | 84 | M12 | 44 | 28 | 70 | 21 | 80 113 |
| 70173-* | VCT.84 p-M16x30-* | 84 | M16 | 44 | 28 | 30 | 21 | 85 131 |
| 70175-* | VCT.84 p-M16x40-* | 84 | M16 | 44 | 28 | 40 | 21 | 85 141 |
| 70177-* | VCT.84 p-M16x50-* | 84 | M16 | 44 | 28 | 50 | 21 | 85 157 |
| 70179-* | VCT.84 p-M16x60-* | 84 | M16 | 44 | 28 | 60 | 21 | 85 170 |
| 70181-* | VCT.84 p-M16x70-* | 84 | M16 | 44 | 28 | 70 | 21 | 85 185 |
| 70099-* | VCT.95 p-M16x50-* | 95 | M16 | 46 | 32 | 50 | 21 | 138 175 |

VCT-SST-p

| | | INOX STAINLESS STEEL METRIC | | | | | | |
|----------|-----------------------|------------------------------------|-----|------|----|----|----|------------|
| Code | Description | D | d6g | L | d1 | l | l2 | C# [Nm] |
| 69837-C9 | VCT.25-SST-p-M5x10-C9 | 25 | M5 | 19 | 13 | 10 | 8 | 6 8 |
| 69838-C9 | VCT.25-SST-p-M5x16-C9 | 25 | M5 | 19 | 13 | 16 | 8 | 6 9 |
| 69839-C9 | VCT.25-SST-p-M5x20-C9 | 25 | M5 | 19 | 13 | 20 | 8 | 6 10 |
| 69840-C9 | VCT.25-SST-p-M5x25-C9 | 25 | M5 | 19 | 13 | 25 | 8 | 6 11 |
| 69881-* | VCT.32-SST-p-M6x16-* | 32 | M6 | 23 | 15 | 16 | 10 | 8 14 |
| 69882-* | VCT.32-SST-p-M6x20-* | 32 | M6 | 23 | 15 | 20 | 10 | 8 15 |
| 69883-* | VCT.32-SST-p-M6x25-* | 32 | M6 | 23 | 15 | 25 | 10 | 8 16 |
| 69884-* | VCT.32-SST-p-M6x30-* | 32 | M6 | 23 | 15 | 30 | 10 | 8 17 |
| 69945-* | VCT.40-SST-p-M8x20-* | 40 | M8 | 27 | 17 | 20 | 12 | 18 25 |
| 69946-* | VCT.40-SST-p-M8x25-* | 40 | M8 | 27 | 17 | 25 | 12 | 18 27 |
| 69947-* | VCT.40-SST-p-M8x30-* | 40 | M8 | 27 | 17 | 30 | 12 | 18 28 |
| 69948-* | VCT.40-SST-p-M8x40-* | 40 | M8 | 27 | 17 | 40 | 12 | 18 31 |
| 69995-* | VCT.50-SST-p-M10x20-* | 50 | M10 | 32 | 19 | 20 | 14 | 25 37 |
| 69996-* | VCT.50-SST-p-M10x25-* | 50 | M10 | 32 | 19 | 25 | 14 | 25 40 |
| 69997-* | VCT.50-SST-p-M10x30-* | 50 | M10 | 32 | 19 | 30 | 14 | 25 42 |
| 70000-* | VCT.50-SST-p-M10x40-* | 50 | M10 | 32 | 19 | 40 | 14 | 25 45 |
| 69998-* | VCT.50-SST-p-M10x45-* | 50 | M10 | 32 | 19 | 45 | 14 | 25 49 |
| 69999-* | VCT.50-SST-p-M10x55-* | 50 | M10 | 32 | 19 | 55 | 14 | 25 54 |
| 70042-* | VCT.63-SST-p-M12x30-* | 63 | M12 | 37 | 22 | 30 | 16 | 46 68 |
| 70043-* | VCT.63-SST-p-M12x40-* | 63 | M12 | 37 | 22 | 40 | 16 | 46 74 |
| 70046-* | VCT.63-SST-p-M12x50-* | 63 | M12 | 37 | 22 | 50 | 16 | 46 80 |
| 70073-* | VCT.74-SST-p-M12x30-* | 74 | M12 | 43.5 | 26 | 30 | 22 | 68 87 |
| 70075-* | VCT.74-SST-p-M12x50-* | 74 | M12 | 43.5 | 26 | 50 | 22 | 68 100 |
| 70191-* | VCT.84-SST-p-M16x30-* | 84 | M16 | 44 | 28 | 30 | 21 | 85 132 |
| 70194-* | VCT.84-SST-p-M16x50-* | 84 | M16 | 44 | 28 | 50 | 21 | 85 159 |
| 70197-* | VCT.84-SST-p-M16x70-* | 84 | M16 | 44 | 28 | 70 | 21 | 85 186 |

"Max limit Tightening torque" means the max torque value at which the metal insert, in normal conditions of use, is perfectly and strongly anchored to the plastic material.