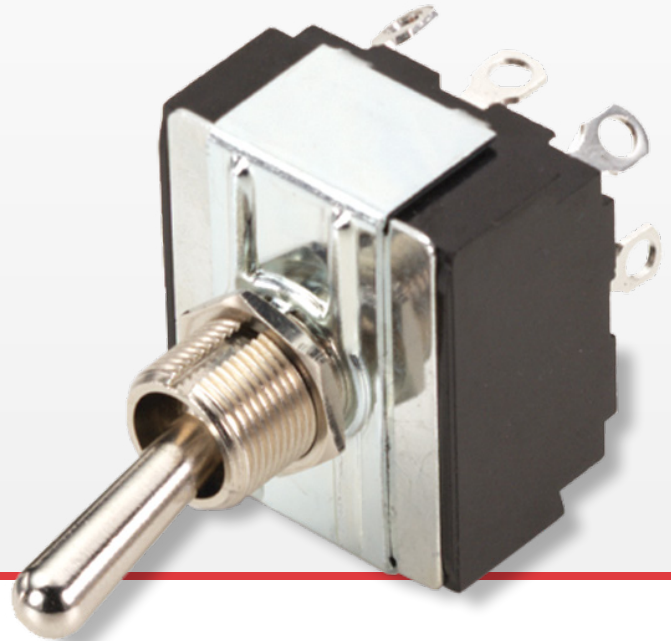


H/I-Series

Toggle Switches

PRODUCT WEBPAGE

request sample, configure part



General purpose workhorses with options tailored to meet most any need. Ratings to 17A 125VAC, various actuator, bushing, termination, and circuit choices allow this toggle to easily integrate into a variety of different applications. The H/I-Series is appropriate for usage in low voltage DC applications.

3-4	3-17	125, 250, 600	12-24
Poles	Amps	VAC	VDC

Typical Applications

- Marine
- Food Service
- Generator
- Industrial Control
- Office Automation

Tech Specs

Dielectric Strength

UL/CSA: 1000V - live to dead metal parts

Electrical Life

50,000 cycles - maintained
25,000 cycles - momentary

Operating Temperature

32°F to 185°F (0° to 85°C)

Ordering Scheme

Sample Part Number **H K 25 1 - 73**

Selection 1 2 3 4 5

1. SERIES

H

2. CIRCUIT

Three Pole

K ON-NONE-OFF
L ON-NONE-ON
M ON-OFF-ON
O ON-OFF-ON

Three Pole (In Four Pole Base)

A ON-NONE-OFF
B ON-NONE-ON
S ON-OFF-ON

3. RATING

25	10A 250 VAC	A25	6A 600VAC,
	15A 125 VAC		10A 250 VAC,
	3/4HP 250 VAC		15A 125 VAC,
26	1, 2 or 3-Phase	A27	3/4HP 250 VAC,
	3A 250 VAC		1, 2, 3-Phase,
	6A 125 VAC		1 HP 480-600VAC; 3 Phase
27	1/4HP 12-250 VAC	A27	6A 600 VAC,
	1, 2 or 3-Phase		12A 250 VAC,
	12A 250 VAC		17A 125 VAC,
	17A 125 VAC		2 HP 480-600 VAC; 3 Phase
	1-1/2HP 250 VAC		
	1, 2, 3-Phase		

4. TERMINATION/FUNCTION 1, 4

Function	Solder Lug	.250 Tab (QC)	.205 Tab (QC)	.187 Tab (QC)	Screw Term.	Wire Lead	PC Term.
ON-NONE-OFF	O	1	2	3	4	5	6
(ON)-NONE-OFF	A	B	C	D	E	F	G
ON-NONE-(OFF)	L	M	Q	R	S	T	U
ON-NONE-ON	O	1	2	3	4	5	6
ON-NONE-(ON)	A	B	C	D	E	F	G
ON-OFF-ON	O	1	2	3	4	5	6
ON-NONE-(ON)	A	B	C	D	E	F	G
(ON)-NONE-(ON)	L	M	Q	R	S	T	U

4. TERMINATION/FUNCTION 8

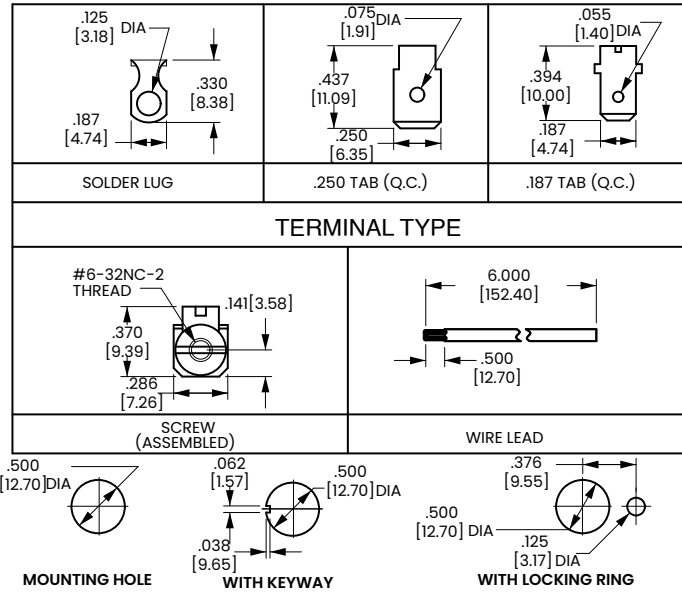
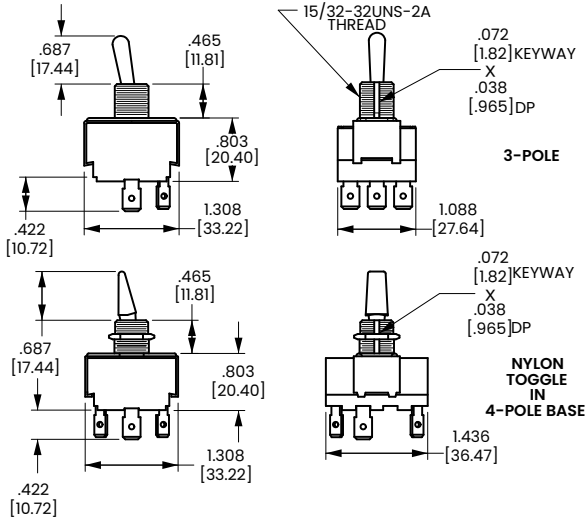
Bat Style Toggle	Toggle with Neoprene Seal	Toggle Length	Bushing Length
73	78	.687	.465
NBL3	NBL8	.687	.465
NWH3	NWD8	.687	.465
NRD3	NRD8	.687	.465

Notes:

- Standard Wire lead Length is 6" for other wire lead length, Use Wire length lead Termination/Function code and Add "/" and the wire lead length required at the end of the part number. Example: HK255-73/10"
- Hardware/Packaging Options may be added to the base part number by adding a "/" with the option at the end of the part number. Example: HL251-73 / HDW ASSM
Available options include:
2 Hex 2 Hex nuts (1 assembled on switch, 1 Supplied in bulk)
No Hardware No Hardware included
HDW ASSM With Hardware assembled
HDW bulk With Hardware bulk
Poly With Polybag
- The nbl toggle uses a black oxide plated metal bushing. NWN and NRD toggles uses a nickle plated metal bushing. NBL, NWH, and NRD toggles use a four pole base with pole 3 empty.
- () indicates momentary function.
- Maintained or Momentary action of the switch is determined by the combination of the circuit and termination/function designation of the description. Example: HK25B-73 is a (ON)-OFF circuit with .250 TAB Terminals.
- Screw terminals are supplied with screws assembled to terminals.
- Nylon toggles are not available with momentary circuits.
- The "O" circuit is a reversing circuit with jumpers from terminals 1 to 6, 3 to 4 and Terminal 7 to 9.
- A Specials "O" circuit is a reversing circuit called out with a "J" Following the termination/function digit in the description. Jumpers are from terminal 1 to 5, 3 to 5, 4 to 9 and 6 to 7.
- Special "O" circuit only available with .250 TAB terminals. Example: H0251J-73

Dimensional Specs

inches [millimeters]



Authorized Sales Representatives and Distributors

Click on a region of the map below to find your local representatives and distributors or visit www.carlingtech.com/findarep.



About Carling

Founded in 1920, Carling Technologies is a leading manufacturer of electrical and electronic switches and assemblies, circuit breakers, electronic controls, power distribution units, and multiplexed power distribution systems. With six ISO9001 and IATF16949 registered manufacturing facilities and technical sales offices worldwide, Carling Technologies Sales, Service and Engineering teams do much more than manufacture electrical components, they engineer powerful solutions! To learn more about Carling please visit www.carlingtech.com/company-profile.

To view all of Carling's environmental, quality, health & safety certifications please visit www.carlingtech.com/environmental-certifications.

© Carling Technologies, Inc.

4. Carling is a registered trademark of Carling Technologies, Inc. in the U.S. and other countries.