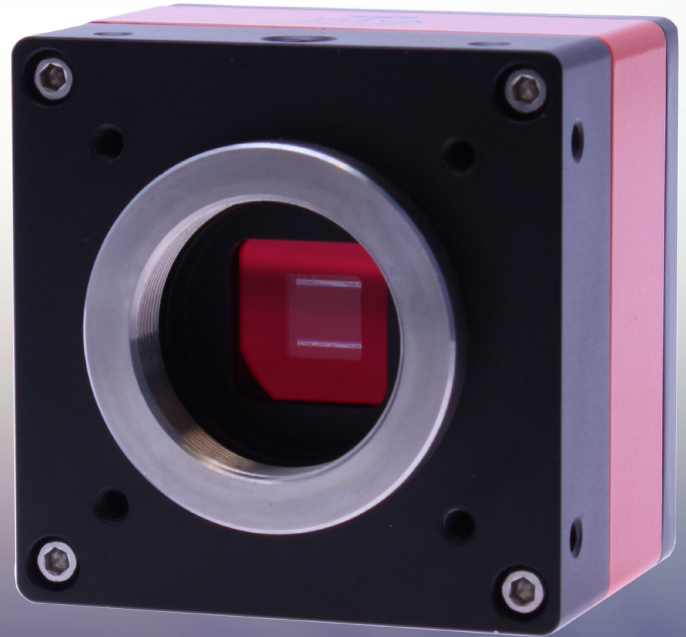




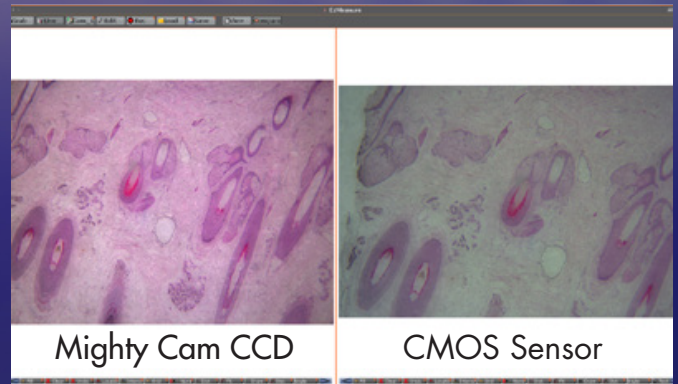
Mighty Cam CCD USB Camera

See the CCD Difference

The Mighty Cam CCD is designed for challenging lighting and color conditions. The CCD sensor provides precise color reproduction and highly detailed images for your demanding applications. When compared to standard camera sensors, the Mighty Cam CCD provides images with higher detail and accurate color. The Mighty Cam CCD is capable of high resolution images with low noise and can precisely capture moving objects. If precise color replication is critical, the exceptional quality of the Mighty Cam CCD sensor will meet the requirements of the most demanding applications. Includes ezMeasure Software for image/video capture, measurements, annotation, analysis and more.



1/2" CCD Sensor



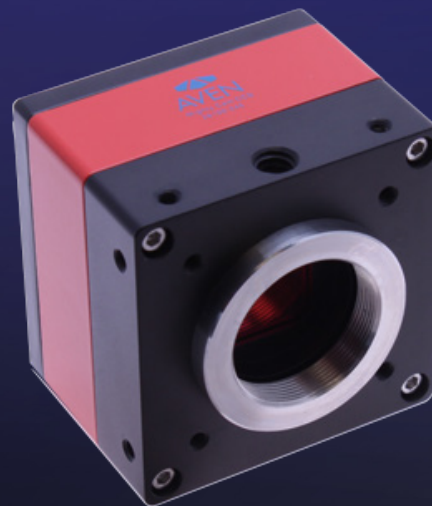
Mighty Cam CCD

CMOS Sensor

Comparison image created with the included ezMeasure Software

MIGHTY CAM CCD CAMERA	
IMAGE SENSOR	1/2" 1.4MP Color CCD
OUTPUT	USB 2.0
PIXEL SIZE	4.65 x 4.65µm
FRAME RATE/RESOLUTION	20FPS (1360 x 1024) 30FPS (1920 x 1080) 45FPS (1024 x 768) 36FPS (1280 x 960)
WHITE BALANCE	Automatic/Manual
SCAN TYPE	Progressive Scan
LENS MOUNT	C Mount
SYSTEMS	Windows 7 & 8
OUTER DIMENSIONS	52mm x 52mm x 39.7mm (2.4" x 2.4" x 1.5" inches)
WEIGHT	121g (.35lbs)
PHOTO FORMAT	JPEG/BMP/PNG/RAW
SHUTTER	Global
COLOR	RGB
PACKAGE CONTENTS	Camera USB Cable Lens Cap Cover ezMeasure Software

Part #	Description	Sensor
26100-245	Mighty Cam CCD	CCD



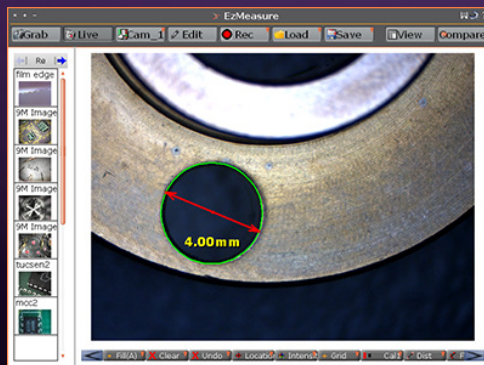
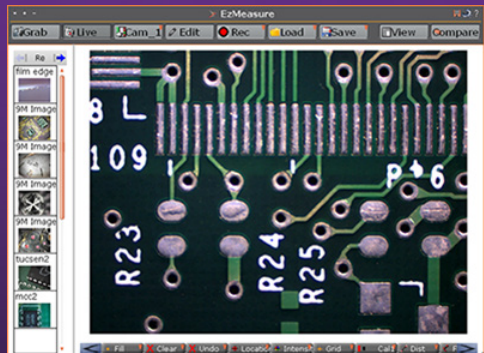
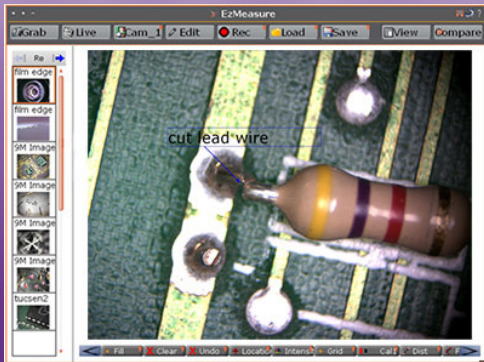
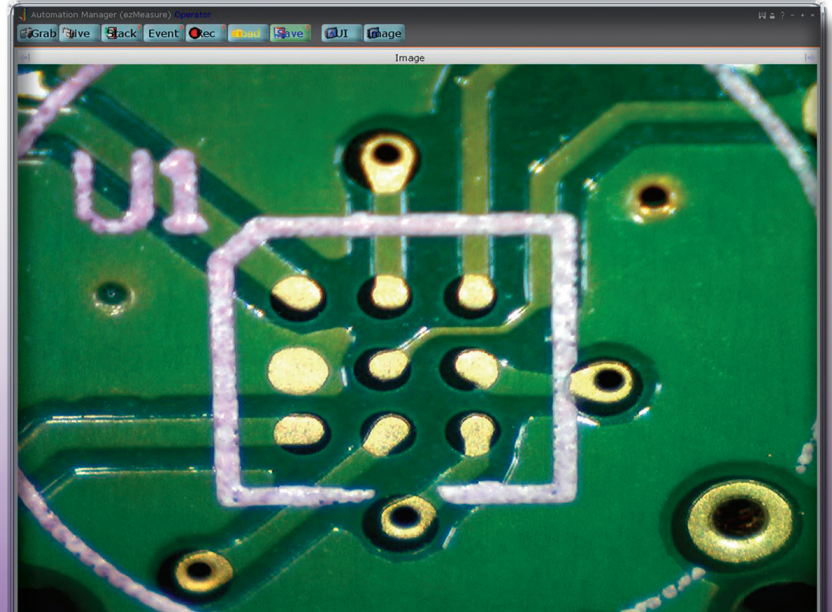
Supports TWAIN and DirectShow Interfaces



ezMeasure Software

Analysis Made "EZ"

ezMeasure Software is your digital analization solution. Capture high quality images, record video for playback, calibrate for accurate measurements, annotate and record data. It's all "EZ" with ezMeasure



Measure, Annotate and Analyze

Utilize ezMeasure's features to callibrate, make accurate measurements, annotate your data and create reports

Capture High Quality Images

Create enhanced still photos or record a live video stream for play back

Measurement Tools

- Set the image pixels to real units eg. mm or inches.
- Record and save multiple calibration settings.
- Measure the distances between different points