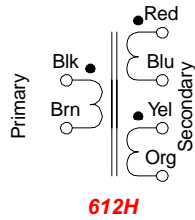
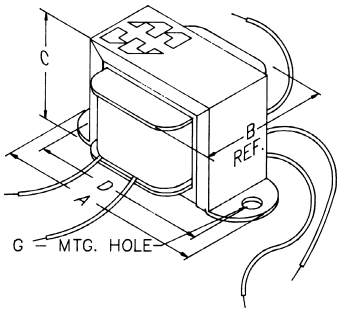
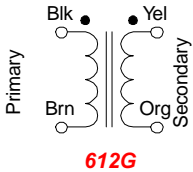


Chassis & P.C. Board Mount

PULSE TRANSFORMERS

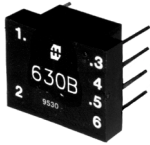


- Economical, open style, chassis mount.
- Mounting hole (G) - .187"
- Units are intended for pulse applications including thyristor / triac firing circuits.
- Flexible leads - 4" minimum.

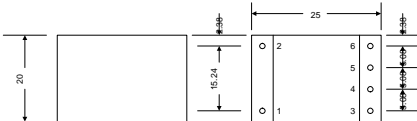


| Cat. No. | Ratio | Circuit Max. Volts | Primary | | D.C. Winding Resistance | | Insulation RMS (Volts) | Wt. Oz. | Dimensions | | | |
|-------------|-------|--------------------|----------------------|------------------|-------------------------|---------------|------------------------|---------|------------|------|------|------|
| | | | Inductance mH (min.) | D.C. Res. (Ohms) | Sec. 1 (Ohms) | Sec. 2 (Ohms) | | | A | B | C | D |
| 612G | 1:1 | 600 | 6.6 | 0.87 | 0.87 | - | 4000 | 8.0 | 2.06 | 1.25 | 1.19 | 1.75 |
| 612H | 1:1:1 | 600 | 1.5 | 0.45 | 0.42 | 0.49 | 4000 | 8.0 | 2.06 | 1.25 | 1.19 | 1.75 |

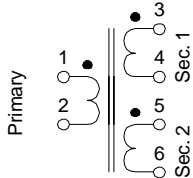
PULSE TRANSFORMERS



630 Series - Dimensions & Schematic



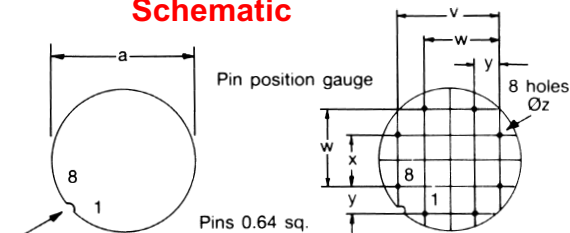
All Dimensions in mm
Pins 0.64 sq.



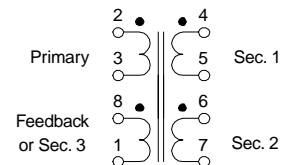
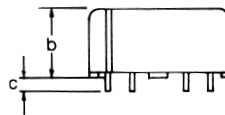
- These transformers are fully encapsulated in a high grade black molded case with a UL94V-O rating.
- They are intended mainly for thyristor / triac triggering applications.
- All units are voltage proof tested between windings at 2500V RMS for 1 minute, for a working voltage rating maximum of 440V RMS.
- Transformers with three or more windings can be series connected to obtain alternative ratios. (ie...a 1:1:1 type may be series connected by linking pins 4 & 5 in which case 3-6 are used as the primary winding to obtain a ratio of 2:1 etc.)

| Cat. No. | Turns Ratio | Primary | | Leakage Inductance uH (max) | Capacity pf. (max) | D.C. Winding Resistance (ohms) | | | |
|-------------|-------------|----------------------|------------------|-----------------------------|--------------------|--------------------------------|--------|--------|--------|
| | | Inductance mH (min.) | ET Constant V uS | | | Pri. | Sec. 1 | Sec. 2 | Sec. 3 |
| 630B | 1:1 | 1 | 120 | 2.0 | 50 | 0.25 | 0.23 | - | - |
| 631B | 1:1:1 | 1 | 120 | 3 | 40 | 0.25 | 0.22 | 0.28 | - |
| 632B | 2:1:1 | 1 | 120 | 3.5 | 30 | 0.24 | 0.12 | 0.15 | - |
| 630C | 1:1 | 4 | 240 | 5 | 55 | 0.86 | 0.83 | - | - |
| 631C | 1:1:1 | 4 | 240 | 11 | 35 | 0.9 | 0.76 | 1.1 | - |
| 632C | 2:1:1 | 4 | 240 | 11 | 35 | 0.84 | 0.38 | 0.5 | - |
| 630D | 1:1 | 16.3 | 482 | 18 | 65 | 3.5 | 3.4 | - | - |
| 631D | 1:1:1 | 16.3 | 482 | 40 | 40 | 3.6 | 3.1 | 4.2 | - |
| 632D | 2:1:1 | 16.3 | 482 | 40 | 40 | 3.5 | 1.6 | 2.0 | - |
| 640A | 2:1:1:1 | 10 | 370 | 38 | 32 | 2.3 | 1.1 | 1.3 | 1.0 |
| 640B | 2:1:1:1 | 30 | 640 | 110 | 38 | 6.6 | 3.0 | 3.8 | 2.7 |
| 640C | 2:1:1:1 | 100 | 1160 | 340 | 35 | 25.0 | 12.0 | 14.6 | 10.8 |
| 641A | 2:1:1:1 | 10 | 890 | 28 | 65 | 0.45 | 0.2 | 0.26 | 0.19 |
| 641B | 2:1:1:1 | 30 | 1520 | 75 | 70 | 1.2 | 0.5 | 0.65 | 0.46 |
| 641C | 2:1:1:1 | 100 | 2760 | 190 | 190 | 5.2 | 2.4 | 2.9 | 2.2 |

640 Series - Dimensions & Schematic



Positions of pins 1 and 8 and type number marked on this face



| Cat. Series No. | Tol. | Dimensions | | | | | | | |
|-------------------|------|------------|------|-----|-------|-------|-------|------|-----|
| | | a | b | c | v | w | x | y | z |
| 640 Series | Max. | 25.0 | 12.7 | - | 17.98 | 12.9 | 7.82 | 5.28 | 1.2 |
| | Min. | - | - | 4.0 | 17.58 | 12.47 | 7.42 | 4.88 | 1.1 |
| 641 Series | Max. | 36.0 | 20.2 | - | 28.12 | 20.52 | 12.90 | 7.82 | 1.2 |
| | Min. | - | - | 4.0 | 27.72 | 20.12 | 12.47 | 7.42 | 1.1 |