

**MATERIALS AND FINISHES:**

BODY, JAM NUT: BRASS  
FINISH: SEE TABLE

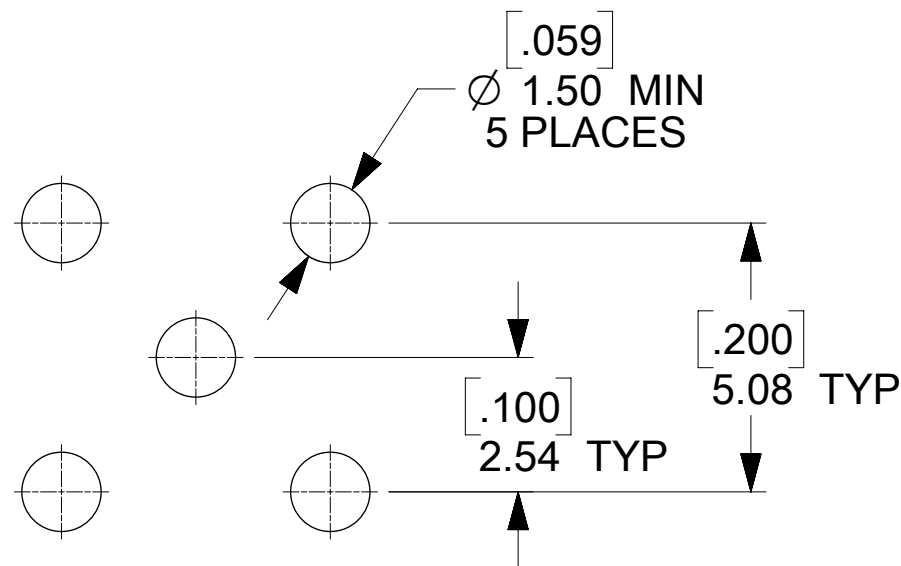
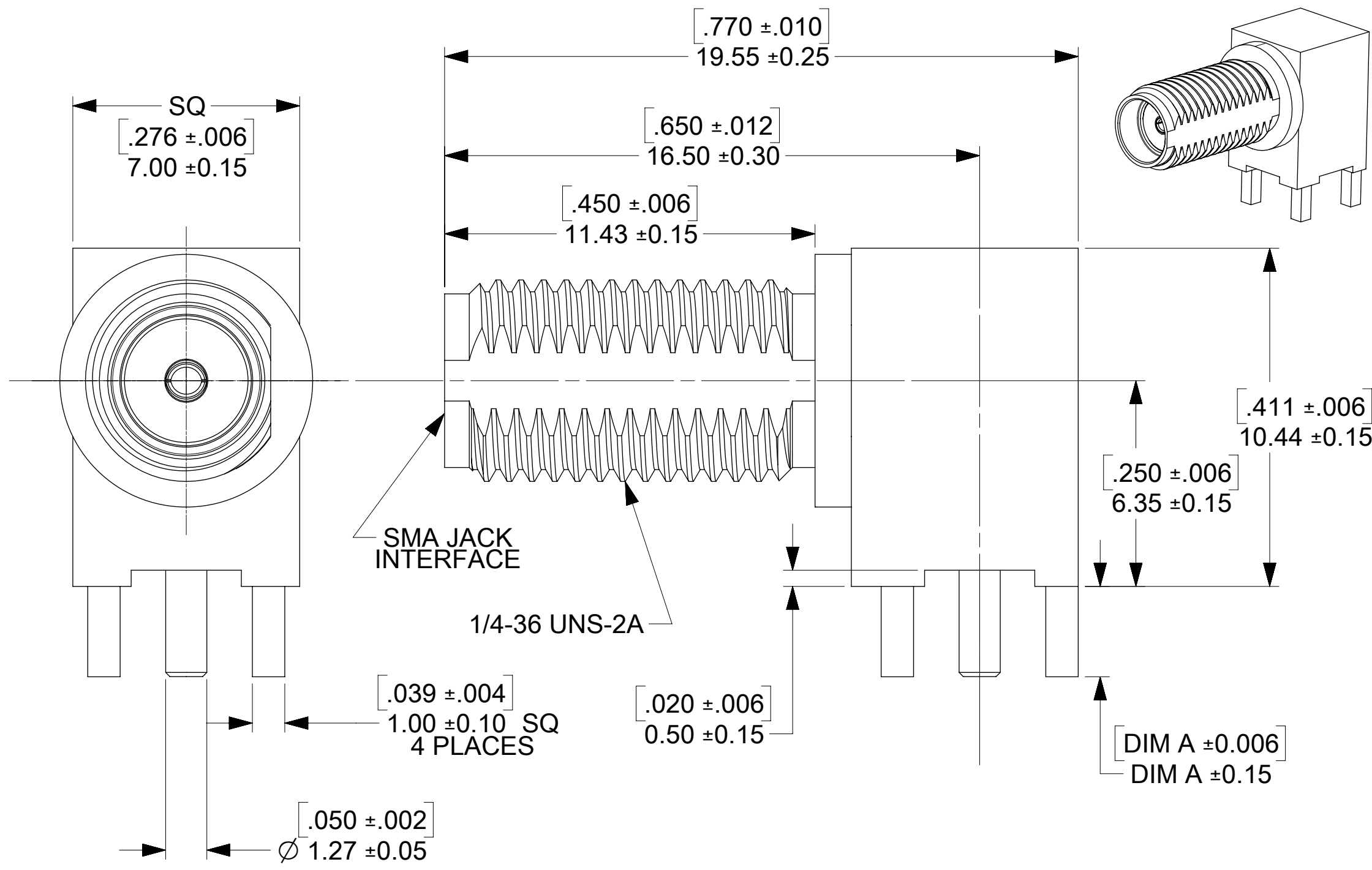
CENTER CONTACT: BERYLLIUM COPPER  
PLATED GOLD

INSULATOR: TEFLON

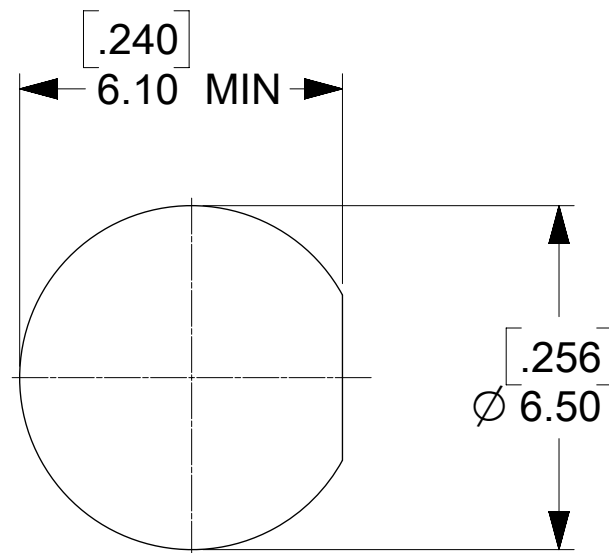
LOCKWASHER: PHOSPHOR BRONZE  
FINISH: SEE TABLE

**ELECTRICAL REQUIREMENTS:**

- VOLTAGE STANDING WAVE RATIO
  - 1.1(MAX) @0-6GHz.
  - 1.5(MAX) @6-12GHz.
  - 1.8(MAX) @12-18GHz.
- RF INSERTION LOSS:
  - 0.1(MAX) @0-6GHz.
  - 0.4(MAX) @6-12GHz.
  - 0.7(MAX) @12-18GHz.



RECOMMENDED PCB LAYOUT

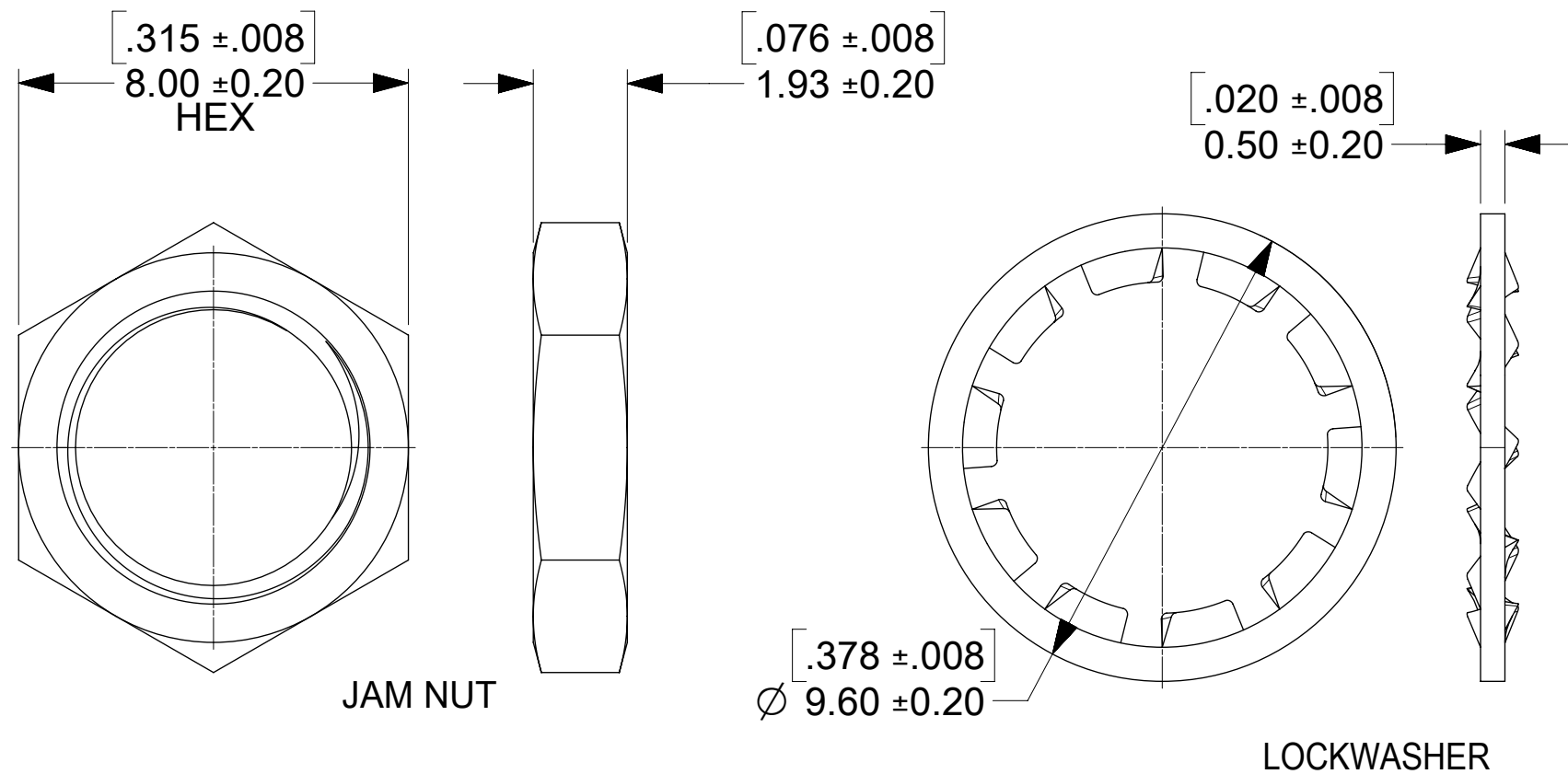


RECOMMENDED PANEL CUTOUT

SEE SD-73251-496 FOR PART NO. CONTINUATION

73251-2209	GOLD FLASH / STANDARD TRAY	3.94	.155
73251-2208	GOLD FLASH/STANDARD TRAY W/O WASHER AND NUT	3.94	.155
73251-2207	73251-2201 PACKAGED ONE PER BAG	2.79	.110
73251-2206	SAME AS 73251-2201 EXCEPT COMMERCIAL CONTACT	2.79	.110
73251-2205	SAME AS 73251-2200 EXCEPT COMMERCIAL CONTACT	2.79	.110
73251-2204	GOLD FLASH/STANDARD TRAY W/O WASHER AND NUT	2.79	.110
73251-2203	GOLD FLASH / STANDARD TRAY (54 CAVITY)	2.79	.110
73251-2202	73251-2201 PACKAGED IN SMALL TRAY (20 CAVITY)	2.79	.110
73251-2201	GOLD / STANDARD TRAY	2.79	.110
73251-2200	NICKEL / STANDARD TRAY	2.79	.110
PART NO.	PLATING (BODY, NUT, LOCKWASHER) AND PACKAGING	mm	IN

DIM A



JAM NUT

LOCKWASHER

PS-89675-368	SOLDER SPEC PROFILE
PS-89675-346	ELECTRO/MECH PERFORM.
SPECIFICATION	DESCRIPTION

FUNCTIONAL SYMBOLS	THIS DRAWING CONTAINS INFORMATION THAT IS PROPRIETARY TO MOLEX ELECTRONIC TECHNOLOGIES, LLC AND SHOULD NOT BE USED WITHOUT WRITTEN PERMISSION			
	DIMENSION UNITS	SCALE		
$\nabla_A = 0$	mm	NTS	EC NO: 675413	
$\nabla_C = 0$	GENERAL TOLERANCES (UNLESS SPECIFIED)		DRWN: CWEI02 2021/08/24	
$\nabla_P = 0$	ANGULAR TOL $\pm$ °		CHK'D: YCHENG 2021/08/26	
DIVISIONAL SYMBOLS	4 PLACES $\pm$		APPR: YCHENG 2021/08/26	
	3 PLACES $\pm$		INITIAL REVISION:	
2 PLACES $\pm$		DRWN: AROBERTSON 2012/11/21	DOCUMENT NUMBER	
1 PLACE $\pm$		APPR: JWIENER 2012/11/21	SD-73251-220	
0 PLACES $\pm$			DOC TYPE	
DRAFT WHERE APPLICABLE MUST REMAIN WITHIN DIMENSIONS	THIRD ANGLE PROJECTION	DRAWING	PSD	
		C-SIZE	000	
		SERIES	D14	
		MATERIAL NUMBER	SEE TABLE	
		CUSTOMER	GENERAL MARKET	
		SHEET NUMBER	1 OF 1	

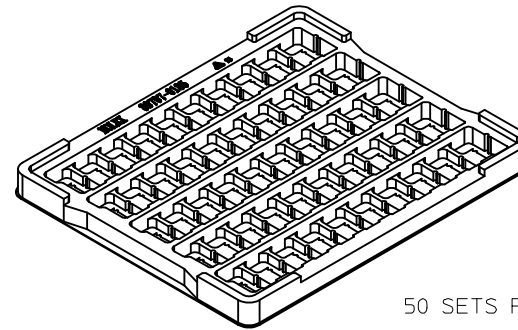
**molex**

SMA JACK, R/A PCB 50 OHM  
SMA-J/RA/PCB EWR-2144

PRODUCT CUSTOMER DRAWING

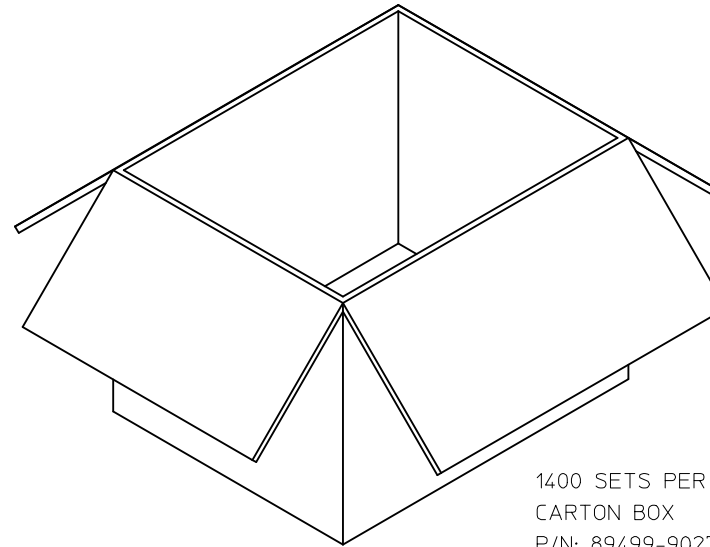


P/N: 73251-2200 / 73251-2201  
 73251-2205 / 73251-2206  
 73251-2208 / 73251-2209



50 SETS PER TRAY  
 TRAY P/N: 89707-0185

FOR 73251-2200, 73251-2201,  
 73251-2205, 73251-2206,  
 73251-2208, AND 73251-2209

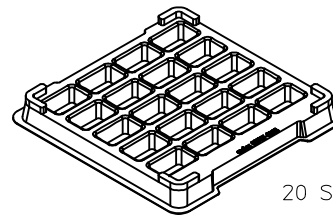


1400 SETS PER OUTER  
 CARTON BOX  
 P/N: 89499-9027

<b>CHG NEW RELEASE          PER RF13-E131</b> EC NO: URF2013-0734 DRAWN BY: RYEH 2013/06/28 CHKD: KERRIE APPR: MHUANG 2013/07/26 REV: A	QUALITY SYMBOLS = 0 = 0 = 0	GENERAL TOLERANCES (UNLESS SPECIFIED) <table border="1"> <tr> <td></td> <td>mm</td> <td>INCH</td> </tr> <tr> <td>4 PLACES</td> <td>± .005</td> <td>± .0004</td> </tr> <tr> <td>3 PLACES</td> <td>± .005</td> <td>± .0004</td> </tr> <tr> <td>2 PLACES</td> <td>± .005</td> <td>± .0004</td> </tr> <tr> <td>1 PLACE</td> <td>± .005</td> <td>± .0004</td> </tr> <tr> <td>0 PLACE</td> <td>± .005</td> <td>± .0004</td> </tr> </table>		mm	INCH	4 PLACES	± .005	± .0004	3 PLACES	± .005	± .0004	2 PLACES	± .005	± .0004	1 PLACE	± .005	± .0004	0 PLACE	± .005	± .0004	DIMENSION STYLE <b>MM/IN</b> DRAWN BY: RYEH DATE: 2013/06/28 CHECKED BY: KERRIE DATE: 2013/06/28 APPROVED BY: MHUANG DATE: 2013/07/26	SCALE: <b>2.5:1</b> DESIGN UNITS: <b>METRIC</b> <b>THIRD ANGLE PROJECTION</b>	<b>SMA JACK R/A PCB TH          50 OHMS          SMA-J/PCB</b> 	MATERIAL NO. <b>SEE TABLE</b>	DOCUMENT NO. <b>SD-73251-220-PKG</b>	SHEET NO. <b>1 OF 4</b>
		mm	INCH																							
	4 PLACES	± .005	± .0004																							
	3 PLACES	± .005	± .0004																							
2 PLACES	± .005	± .0004																								
1 PLACE	± .005	± .0004																								
0 PLACE	± .005	± .0004																								
ANGULAR ± 2°		DRAFT WHERE APPLICABLE MUST REMAIN WITHIN DIMENSIONS		<b>molex</b>		<b>SD-73251-220-PKG</b>		<b>1 OF 4</b>																		
THIS DRAWING CONTAINS INFORMATION THAT IS PROPRIETARY TO MOLEX INCORPORATED AND SHOULD NOT BE USED WITHOUT WRITTEN PERMISSION																										
SIZE C																										

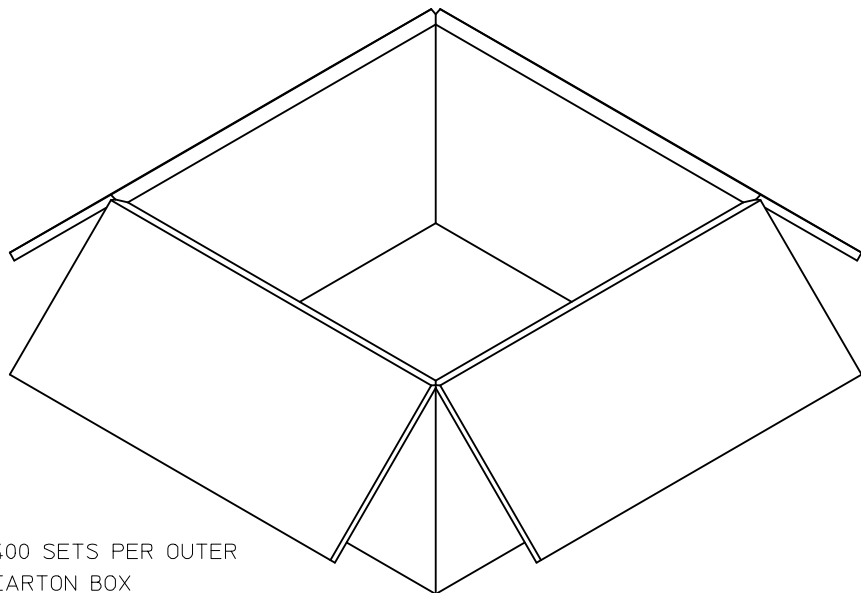


P/N: 73251-2202

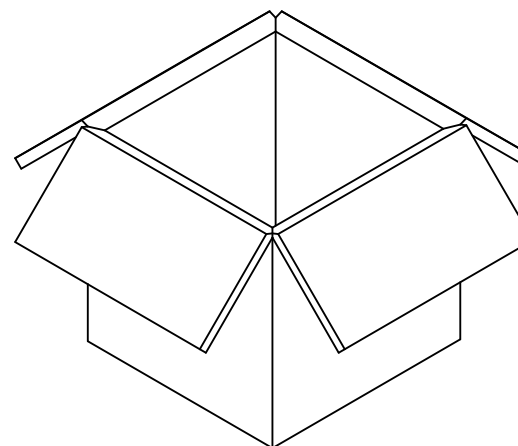


20 SETS PER TRAY  
TRAY P/N: 89707-0308

FOR 73251-2202 ONLY



400 SETS PER OUTER  
CARTON BOX  
P/N: 96707-0002



200 SETS PER INNER  
CARTON BOX  
P/N: 96707-0005

CHG:SEE SHEET 1  
EC NO: URF2013-0734  
DRAWN:RYEH  
CHKD:  
APPR:MHUANG  
REV A

DESCRIPTION 2013/06/28  
2013/07/26

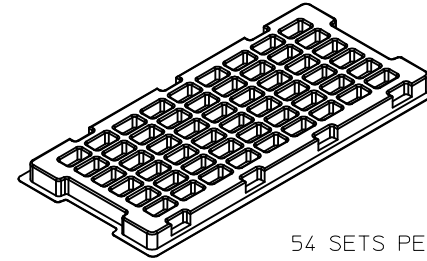
QUALITY SYMBOLS  
 = 0  
 = 0  
 = 0  
 GENERAL TOLERANCES (UNLESS SPECIFIED)  
 mm INCH  
 4 PLACES ± --- ± ---  
 3 PLACES ± --- ± ---  
 2 PLACES ± --- ± ---  
 1 PLACE ± --- ± ---  
 0 PLACE ± --- ± ---  
 ANGULAR ± 2 °  
 DRAFT WHERE APPLICABLE  
 MUST REMAIN  
 WITHIN DIMENSIONS

DIMENSION STYLE  
MM/IN  
 DRAWN BY DATE  
RYEH 2013/06/28  
 CHECKED BY DATE  
KERRIE 2013/06/28  
 APPROVED BY DATE  
MHUANG 2013/07/26  
 MATERIAL NO.  
SEE TABLE

SCALE 2:1  
 DESIGN UNITS METRIC  
 THIRD ANGLE PROJECTION  
 TITLE  
SMA JACK R/A PCB TH  
50 OHMS  
SMA-J/PCB  
**molex**  
 DOCUMENT NO. SD-73251-220-PKG  
 SHEET NO. 2 OF 4  
 THIS DRAWING CONTAINS INFORMATION THAT IS PROPRIETARY TO MOLEX  
 INCORPORATED AND SHOULD NOT BE USED WITHOUT WRITTEN PERMISSION

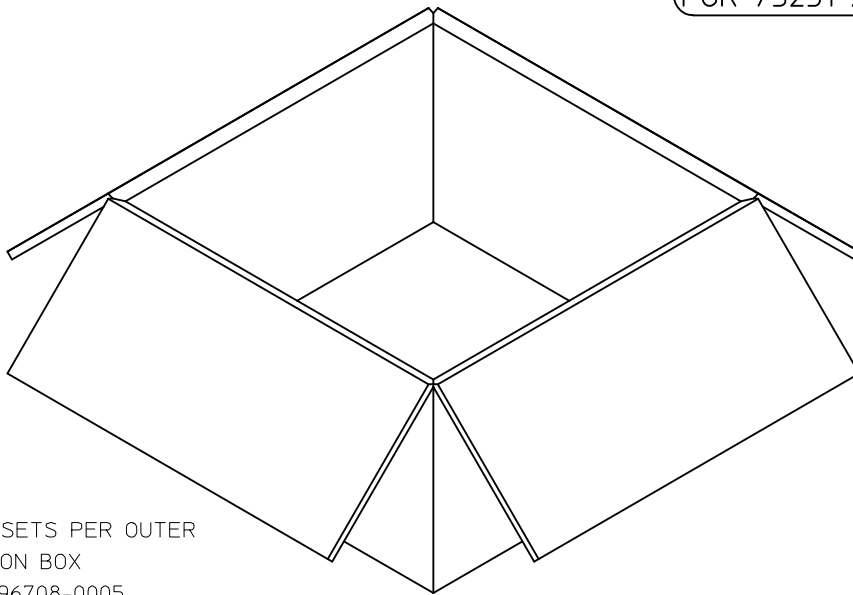


P/N: 73251-2203 / 73251-2204

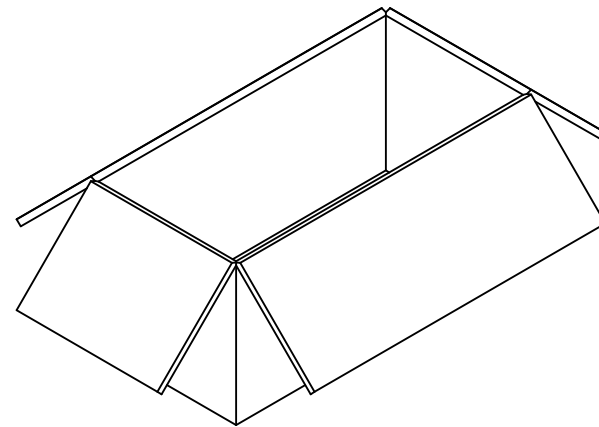


54 SETS PER TRAY  
TRAY P/N: 89707-0220

FOR 73251-2203 AND 73251-2204



1080 SETS PER OUTER  
CARTON BOX  
P/N: 96708-0005

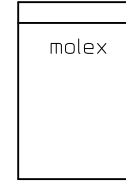


540 SETS PER INNER  
CARTON BOX  
P/N: 96707-0001

<b>CHG:SEE SHEET 1</b> EC NO: URF2013-0734 DRAWN:RYEH 2013/06/28 CHKD: APPR:MHUANG 2013/07/26 REV:	QUALITY SYMBOLS	GENERAL TOLERANCES (UNLESS SPECIFIED)	DIMENSION STYLE	SCALE	DESIGN UNITS	THIRD ANGLE PROJECTION
	▽=0	mm INCH	MM/IN	2:1	METRIC	
	▽=0	4 PLACES ± --- ± ---	DRAWN BY DATE	TITLE		
	▽=0	3 PLACES ± --- ± ---	RYEH 2013/06/28	SMA JACK R/A PCB TH		
	2 PLACES ± --- ± ---	CHECKED BY DATE	50 OHMS			
	1 PLACE ± --- ± ---	KERRIE 2013/06/28	SMA-J/PCB			
	0 PLACE ± --- ± ---	APPROVED BY DATE	<b>molex</b>			
	ANGULAR ± 2 °	MHUANG 2013/07/26	MATERIAL NO.	DOCUMENT NO.	SHEET NO.	
	DRAFT WHERE APPLICABLE MUST REMAIN WITHIN DIMENSIONS	SEE TABLE	SD-73251-220-PKG	3 OF 4		
		SIZE C	THIS DRAWING CONTAINS INFORMATION THAT IS PROPRIETARY TO MOLEX INCORPORATED AND SHOULD NOT BE USED WITHOUT WRITTEN PERMISSION			



P/N: 73251-2207

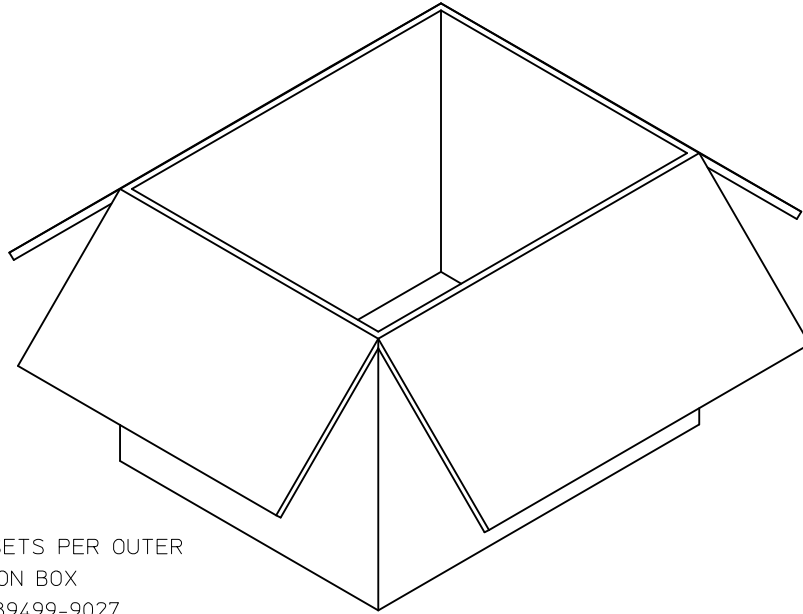


1 SET PER POLYBAG  
P/N: 89707-0317

FOR 73251-2207 ONLY



50 SETS PER POLYBAG  
P/N: 89707-0174



500 SETS PER OUTER  
CARTON BOX  
P/N: 89499-9027



<b>CHG:SEE SHEET 1</b> EC NO: URF2013-0734 DRAWN: RYEH CHKD: MUYEH APPR: MHUANG 2013/06/28 2013/07/26	QUALITY SYMBOLS	GENERAL TOLERANCES (UNLESS SPECIFIED)	DIMENSION STYLE	SCALE	DESIGN UNITS	THIRD ANGLE PROJECTION
	▽=0	mm INCH	MM/IN	1:1	METRIC	
	▽=0	4 PLACES ± --- ± ---	DRAWN BY DATE	TITLE		
	▽=0	3 PLACES ± --- ± ---	RYEH 2013/06/28	SMA JACK R/A PCB TH		
	2 PLACES ± --- ± ---	CHECKED BY DATE	50 OHMS			
	1 PLACE ± --- ± ---	KERRIE 2013/06/28	SMA-J/PCB			
	0 PLACE ± --- ± ---	APPROVED BY DATE	<b>molex</b>			
		MHUANG 2013/07/26	MATERIAL NO.	DOCUMENT NO.	SHEET NO.	
		ANGULAR ± 2 °	SEE TABLE	SD-73251-220-PKG	4 OF 4	
		DRAFT WHERE APPLICABLE MUST REMAIN WITHIN DIMENSIONS	THIS DRAWING CONTAINS INFORMATION THAT IS PROPRIETARY TO MOLEX INCORPORATED AND SHOULD NOT BE USED WITHOUT WRITTEN PERMISSION			

**MATERIALS AND FINISHES:**

BODY, JAM NUT: BRASS  
FINISH: SEE TABLE

CENTER CONTACT: BERYLLIUM COPPER  
PLATED GOLD

INSULATOR: TEFLON

LOCK WASHER: PHOSPHOR BRONZE  
FINISH: SEE TABLE

PACKAGING: SEE TABLE

**ELECTRICAL REQUIREMENTS:**

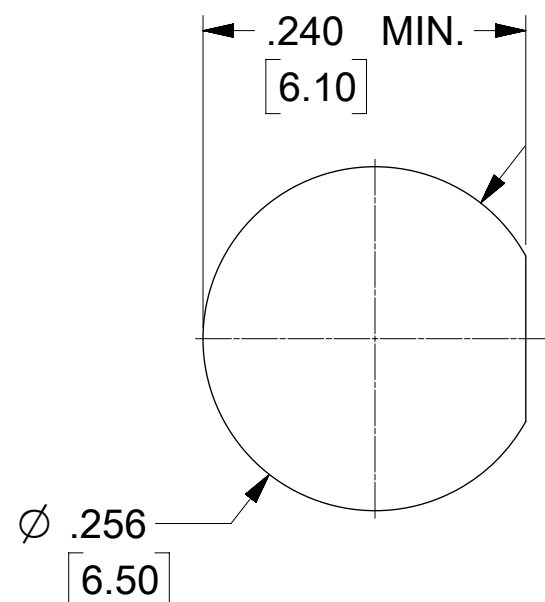
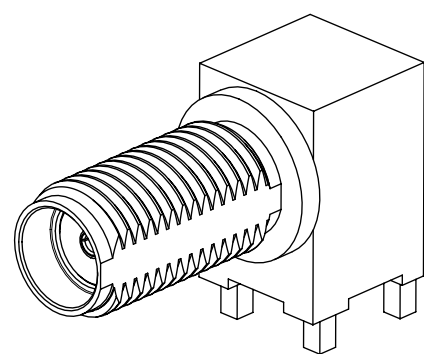
**1. VOLTAGE STANDING WAVE RATIO**

- 1.1(MAX) @0-6GHz.
- 1.5(MAX) @6-12GHz.
- 1.8(MAX) @12-18GHz.

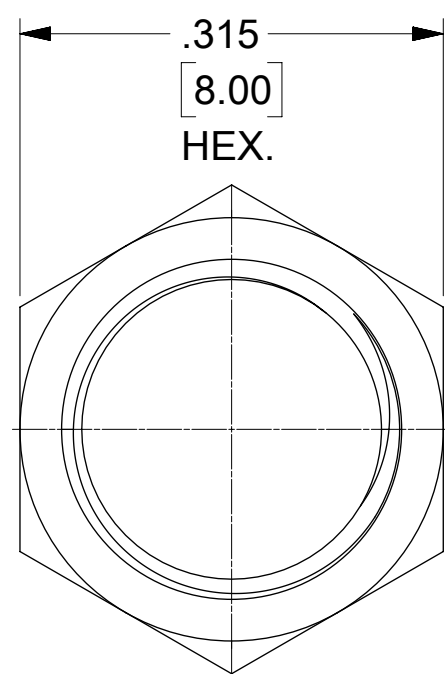
**2. RF INSERTION LOSS:**

- 0.1(MAX) @0-6GHz.
- 0.4(MAX) @6-12GHz.
- 0.7(MAX) @12-18GHz.

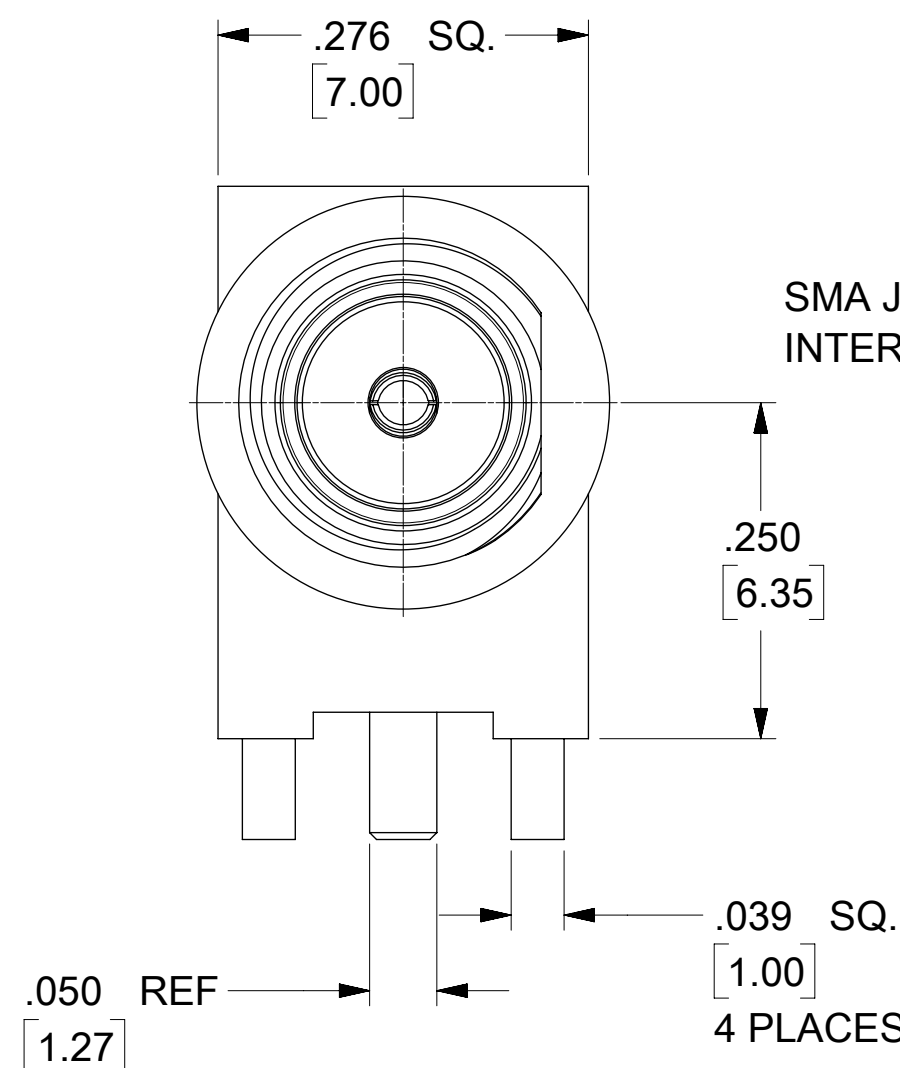
73251-4966	BAG
73251-4965	TRAY
73251-4964	
73251-4963	
73251-4962	
73251-4961	
73251-4960	
PART NO.	PACKAGING



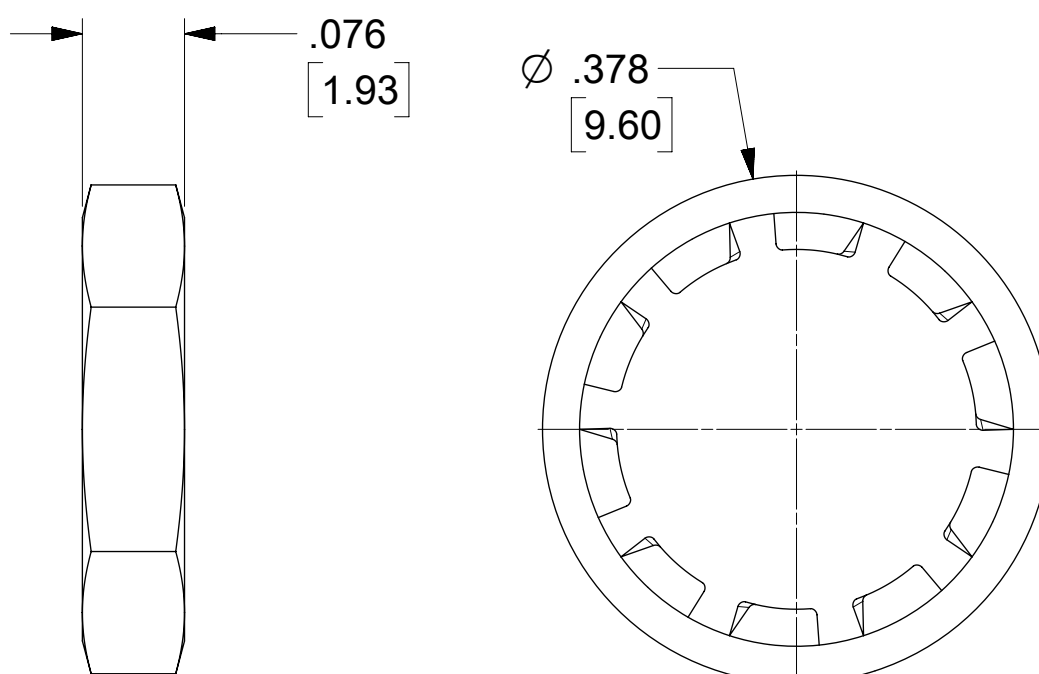
PANEL CUTOUT  
.135 / 3.42 MAX THICKNESS



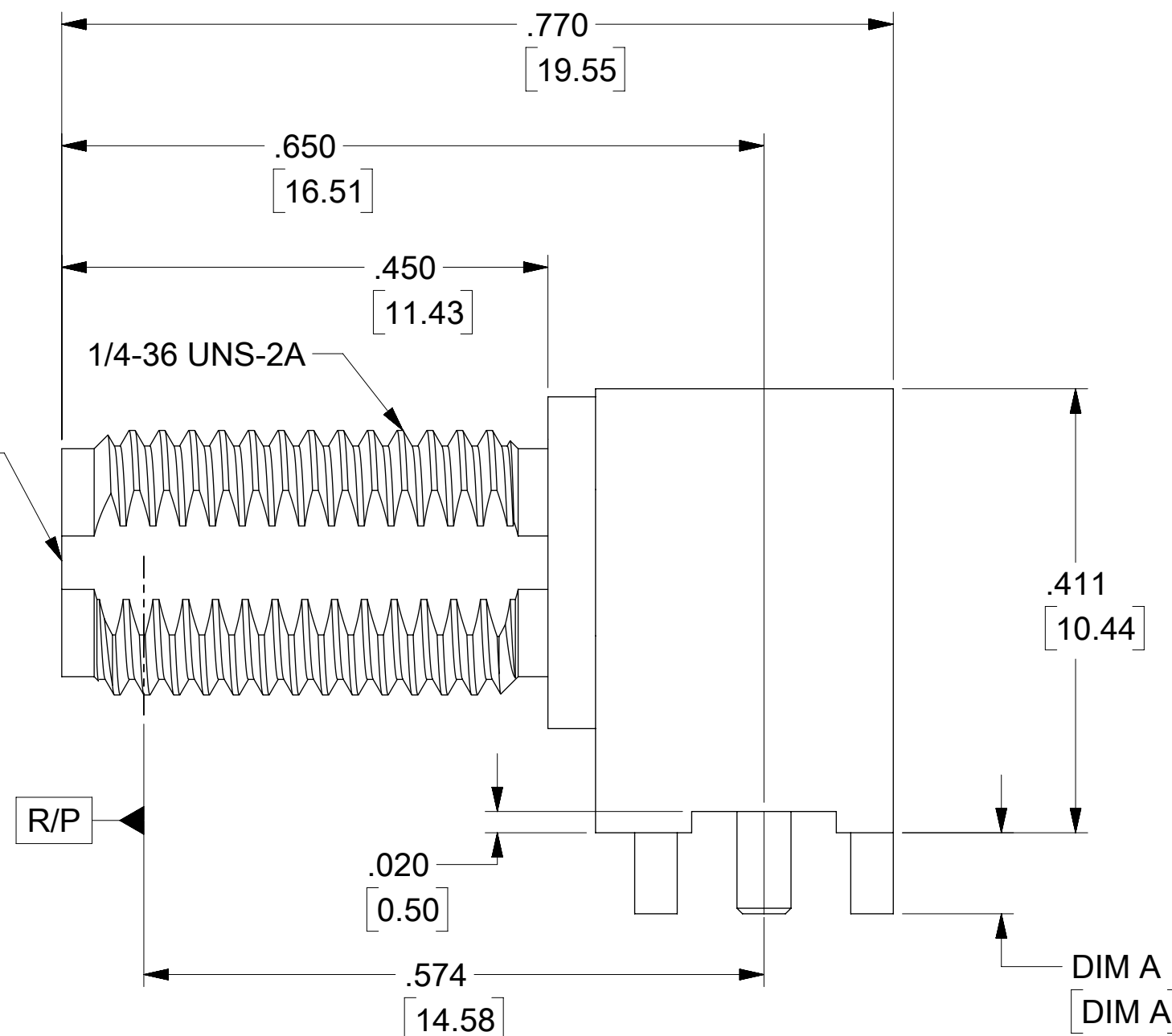
HEX.



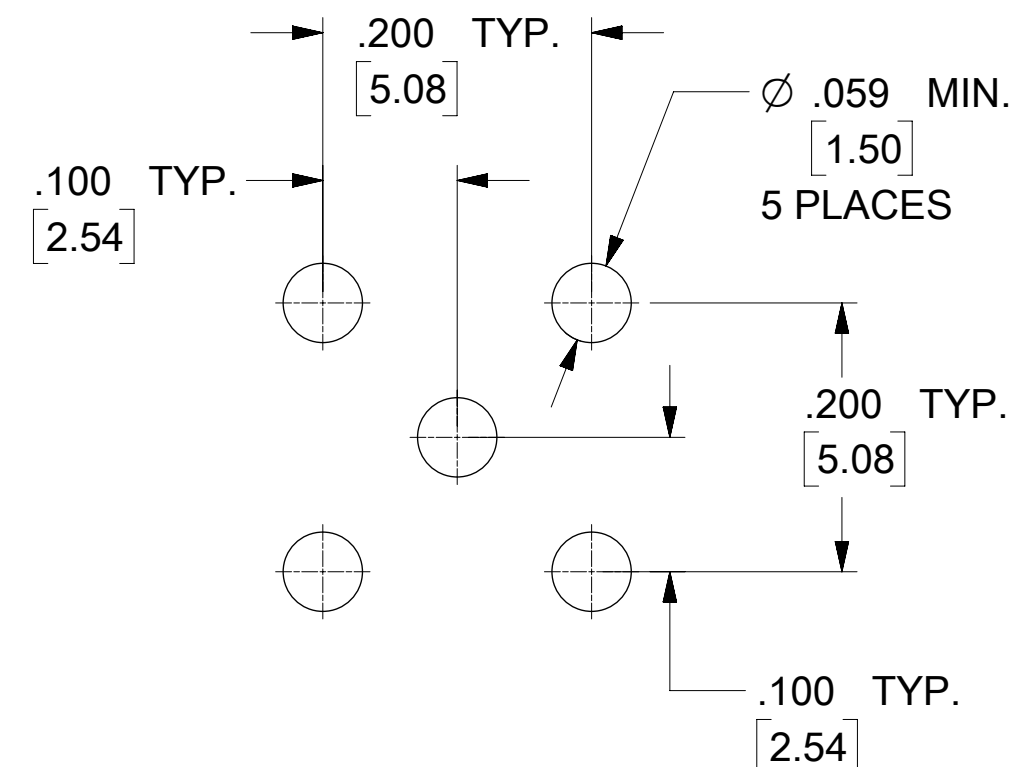
JAM NUT



LOCK WASHER



RECOMMENDED PCB LAYOUT

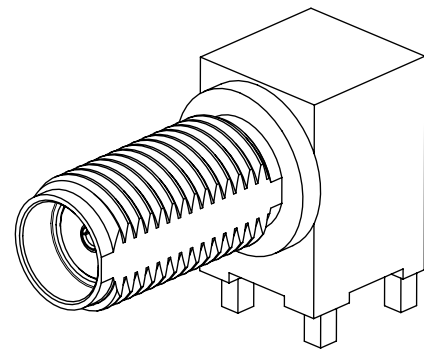


SD-73251-496 IS CONTINUATION FOR SD-73251-220

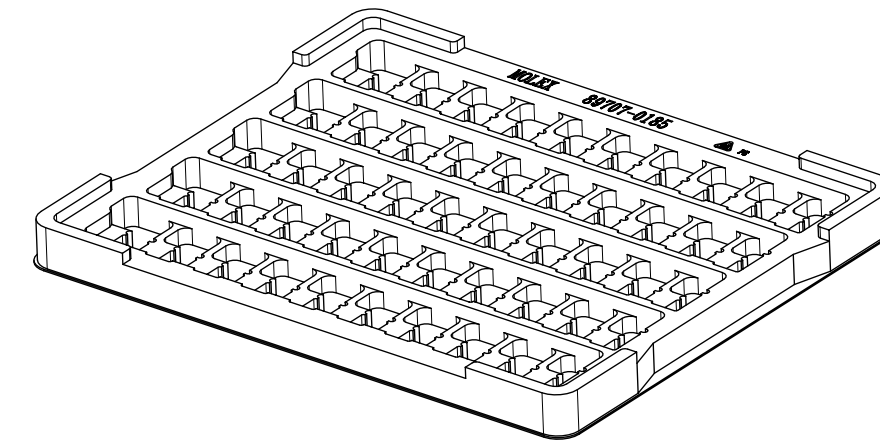
PART NO.	JAM NUT QTY	WASHER QTY	IN / MM	BODY PLATING	CONTACT PLATING	JAM NUT & LOCK WASHER PLATING
73251-4966	1	1	.110 / 2.79	NICKEL (100μ-in MIN)	GOLD (30μ-in MIN) OVER NICKEL(100μ-in MIN)	NICKEL (100μ-in MIN)
73251-4965	2	1	.110 / 2.79	GOLD (5μ-in MIN) OVER NICKEL (50μ-in MIN)	GOLD (30μ-in MIN) OVER NICKEL(100μ-in MIN)	GOLD (1μ-in MIN) OVER NICKEL (50μ-in MIN)
73251-4964	1	1	.075 / 1.91	GOLD (5μ-in MIN) OVER NICKEL (50μ-in MIN)	GOLD (30μ-in MIN) OVER NICKEL(100μ-in MIN)	GOLD (1μ-in MIN) OVER NICKEL (50μ-in MIN)
73251-4963	NOT INCLUDED	NOT INCLUDED	.110 / 2.79	GOLD (5μ-in MIN) OVER NICKEL (50μ-in MIN)	GOLD (30μ-in MIN) OVER NICKEL(100μ-in MIN)	-----
73251-4962	1	NOT INCLUDED	.110 / 2.79	NICKEL (100μ-in MIN)	GOLD (30μ-in MIN) OVER NICKEL(100μ-in MIN)	NICKEL (100μ-in MIN)
73251-4961	2	1	.155 / 3.94	GOLD (1μ-in MIN) OVER NICKEL (50μ-in MIN)	GOLD (1μ-in MIN) OVER NICKEL (50μ-in MIN)	GOLD (1μ-in MIN) OVER NICKEL (50μ-in MIN)
73251-4960	1	1	.075 / 1.91	GOLD (1μ-in MIN) OVER NICKEL (50μ-in MIN)	GOLD (1μ-in MIN) OVER NICKEL (50μ-in MIN)	GOLD (1μ-in MIN) OVER NICKEL (50μ-in MIN)

PS-89675-3460	PRODUCT SPECIFICATION
MIL-STD-348A, FIG. 310.2	INTERFACE
SPECIFICATION	DESCRIPTION

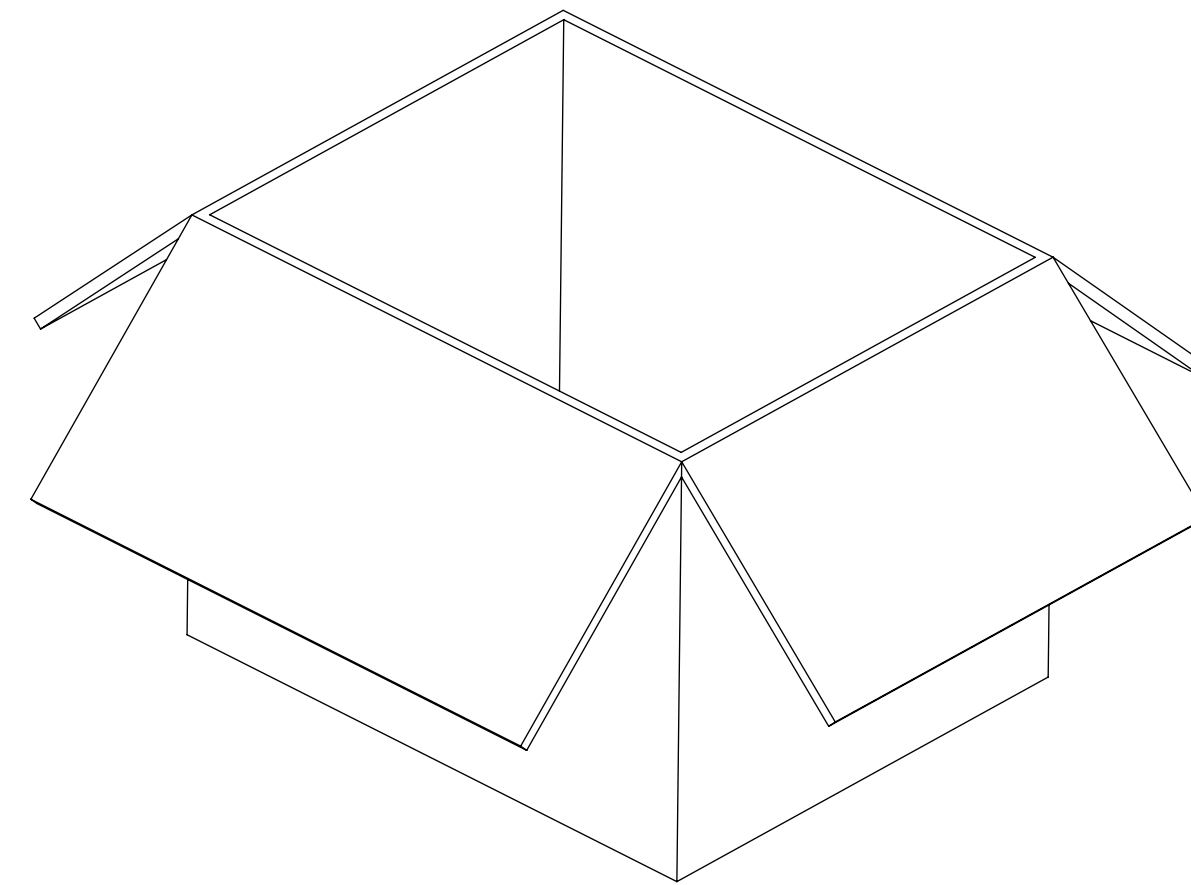
FUNCTIONAL SYMBOLS		THIS DRAWING CONTAINS INFORMATION THAT IS PROPRIETARY TO MOLEX ELECTRONIC TECHNOLOGIES, LLC AND SHOULD NOT BE USED WITHOUT WRITTEN PERMISSION	
FA = 0	INCH/MM	SCALE	CURRENT REV DESC:
EA = 0	GENERAL TOLERANCES (UNLESS SPECIFIED)	NTS	EWR-14242-J ADDED LABEL FORMAT FOR 73251-4966
EP = 0	ANGULAR TOL ± °		EC NO: 659677
	4 PLACES ±		DRWN: JSU18 2021/03/24
	3 PLACES ±		CHK'D: YCHENG 2021/04/06
	2 PLACES ±		APPR: YCHENG 2021/04/06
	1 PLACE ±		INITIAL REVISION:
	0 PLACES ±		DRWN: JLEE02 2014/03/28
			APPR: WSPINK 2014/03/28
DIVISIONAL SYMBOLS		THIRD ANGLE PROJECTION	DRAWING SERIES
DRAFT WHERE APPLICABLE MUST REMAIN WITHIN DIMENSIONS			C-SIZE 73251
DOCUMENT STATUS		DOC TYPE	DOC PART
P1	RELEASE DATE	PSD	000
2021/04/06	01:47:34	SD-73251-496	B9
MATERIAL NUMBER		CUSTOMER	SHEET NUMBER
SEE TABLE	GENERAL MARKET		1 OF 4




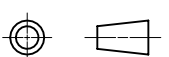
PART NO : 73251-4960  
 PART NO: 73251-4962  
 PART NO: 73251-4963  
 PART NO: 73251-4964  
 PART NO: 73251-4965



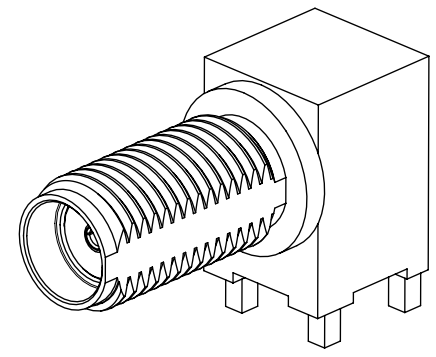
50 SET PER TRAY  
 P/N: 89707-0185



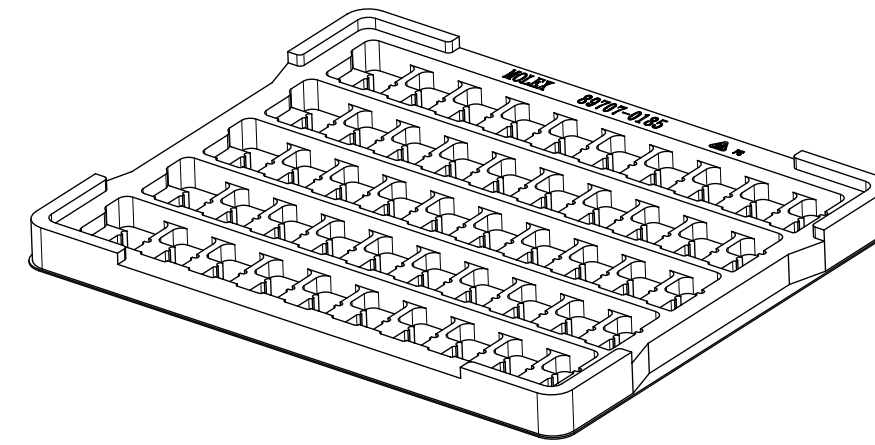
1400 SET PER OUTER CARTON BOX  
 P/N: 89499-9027

FUNCTIONAL SYMBOLS	THIS DRAWING CONTAINS INFORMATION THAT IS PROPRIETARY TO MOLEX ELECTRONIC TECHNOLOGIES, LLC AND SHOULD NOT BE USED WITHOUT WRITTEN PERMISSION										
	DIMENSION UNITS	SCALE	CURRENT REV DESC:								 SMA JACK RA BLKHD RM PCB TH SMA-J/RA/PCB, EWR-2144
$\frac{F}{A} = 0$	INCH/MM	NTS	EWR-14242-J ADDED LABEL FORMAT FOR 73251-4966								
$\frac{E}{C} = 0$	GENERAL TOLERANCES (UNLESS SPECIFIED)		EC NO: 659677								
$\frac{E}{P} = 0$	ANGULAR TOL ± °		DRWN: JSU18 2021/03/24								
DIVISIONAL SYMBOLS	4 PLACES ±		CHK'D: YCHENG 2021/04/06								
	3 PLACES ±		APPR: YCHENG 2021/04/06								
	2 PLACES ±		INITIAL REVISION:								
	1 PLACE ±		DRWN: JLEE02 2014/03/28								
0 PLACES ±		APPR: WSPINK 2014/03/28									
DRAFT WHERE APPLICABLE MUST REMAIN WITHIN DIMENSIONS			THIRD ANGLE PROJECTION	DRAWING	SERIES	MATERIAL NUMBER	CUSTOMER	DOCUMENT NUMBER	DOC TYPE	DOC PART	REVISION
				C-SIZE	73251	SD-73251-496	GENERAL MARKET	PSD	000	B9	2 OF 4

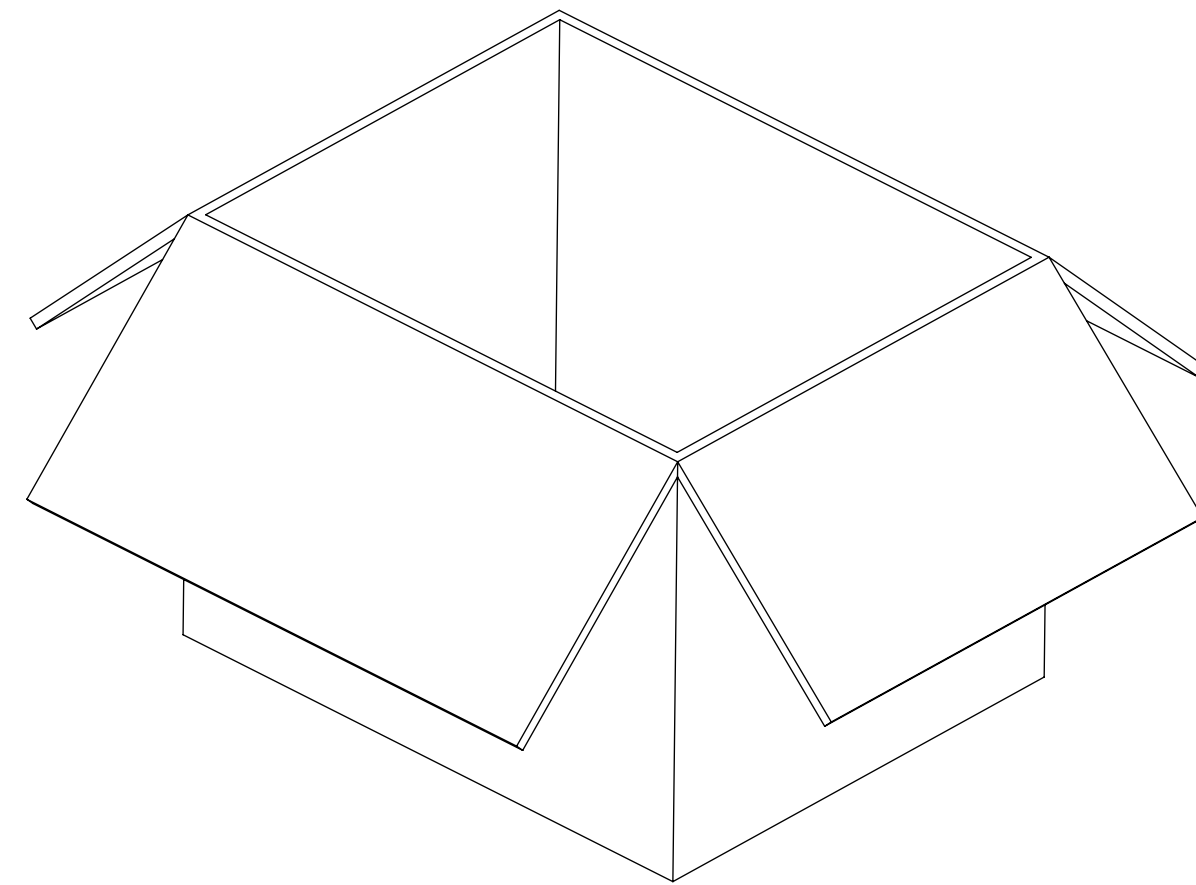
DOCUMENT STATUS	P1	RELEASE DATE	2021/04/06	01:47:34
-----------------	----	--------------	------------	----------



PART NO : 73251-4961



50 SET PER TRAY  
P/N: 89707-0185

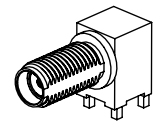


1200 SET PER OUTER CARTON BOX  
P/N: 89499-9027

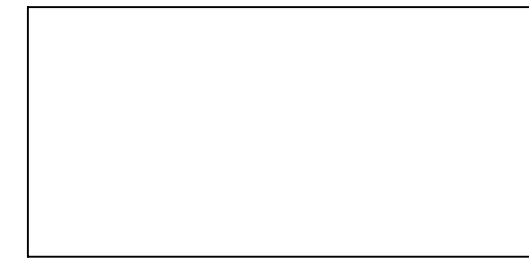
FUNCTIONAL SYMBOLS	THIS DRAWING CONTAINS INFORMATION THAT IS PROPRIETARY TO MOLEX ELECTRONIC TECHNOLOGIES, LLC AND SHOULD NOT BE USED WITHOUT WRITTEN PERMISSION											
	DIMENSION UNITS	SCALE	CURRENT REV DESC:							<b>molex</b>		
$\frac{F}{A} = 0$	INCH/MM	NTS	EWR-14242-J ADDED LABEL FORMAT FOR 73251-4966									
DIVISIONAL SYMBOLS	GENERAL TOLERANCES (UNLESS SPECIFIED)		EC NO: 659677							SMA JACK RA		
	$\frac{E}{C} = 0$	ANGULAR TOL	±	°	DRWN: JSU18 2021/03/24							BLKHD RM PCB TH SMA-J/RA/PCB, EWR-2144
DIVISIONAL SYMBOLS	$\frac{E}{P} = 0$	4 PLACES	±	CHK'D: YCHENG 2021/04/06							PRODUCT CUSTOMER DRAWING	
		3 PLACES	±	APPR: YCHENG 2021/04/06							DOCUMENT NUMBER	
		2 PLACES	±	INITIAL REVISION:							SD-73251-496	
		1 PLACE	±	DRWN: JLEE02 2014/03/28							DOC TYPE	
	0 PLACES	±	APPR: WSPINK 2014/03/28							DOC PART		
DRAFT WHERE APPLICABLE MUST REMAIN WITHIN DIMENSIONS		THIRD ANGLE PROJECTION		DRAWING	SERIES	MATERIAL NUMBER		CUSTOMER	SHEET NUMBER			
				C-SIZE	73251	GENERAL MARKET		3 OF 4				
								PSD 000 B9				

DOCUMENT STATUS	P1	RELEASE DATE	2021/04/06	01:47:34
-----------------	----	--------------	------------	----------





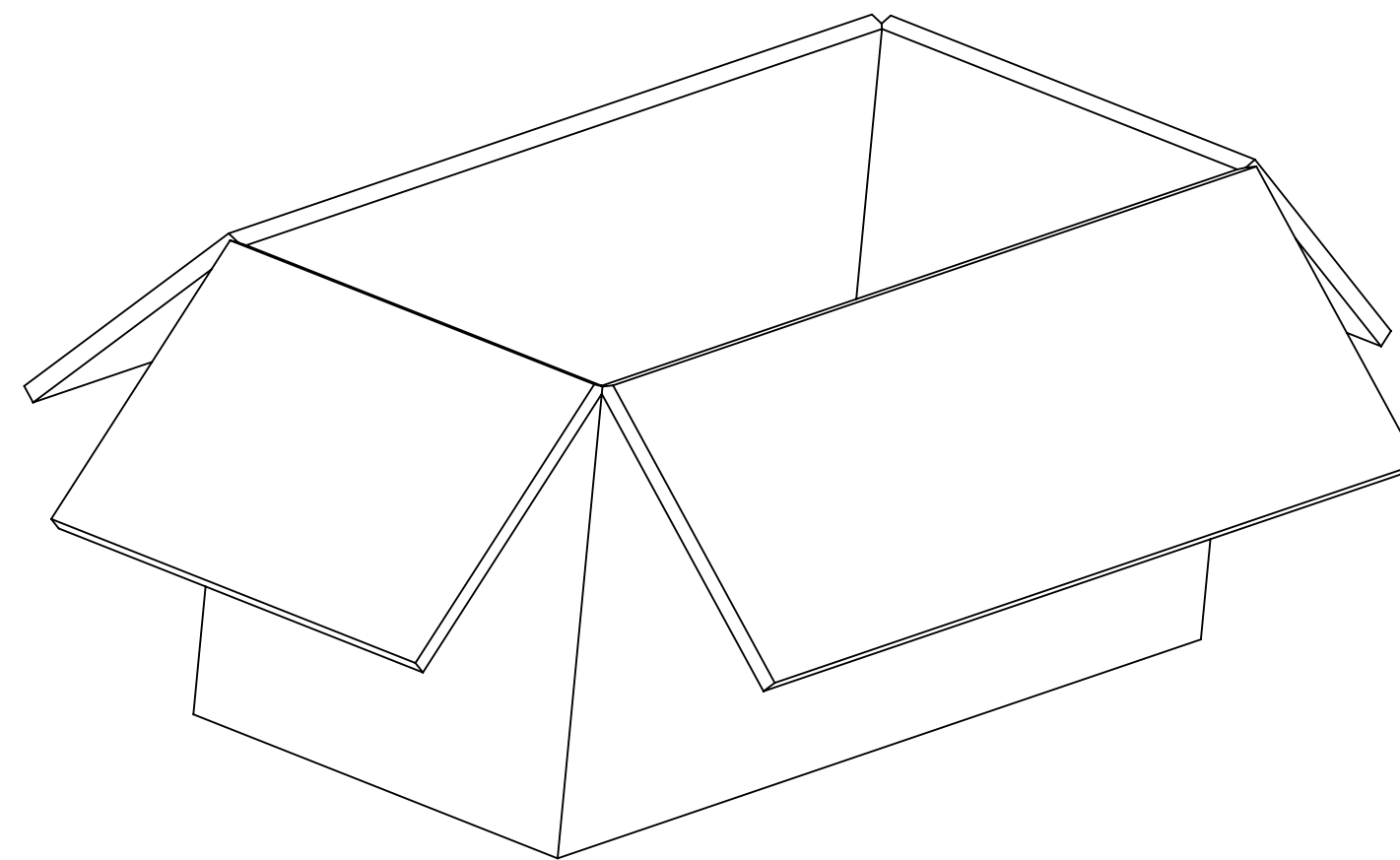
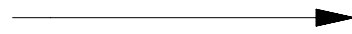
FOR 73251-4966 ONLY



1 SET PER POLYBAG  
P/N: 89707-0317



50 SET PER POLYBAG  
P/N: 89707-0176



500 SET PER OUTER CARTON BOX  
P/N: 96707-0002

LABEL FORMAT FOR  
73251-4966

PART NUMBER : 73251-2200  
ORDER NUMBER : 73251-4966  
MOLEX  
DATE : YYWW

FUNCTIONAL SYMBOLS	THIS DRAWING CONTAINS INFORMATION THAT IS PROPRIETARY TO MOLEX ELECTRONIC TECHNOLOGIES, LLC AND SHOULD NOT BE USED WITHOUT WRITTEN PERMISSION													
	DIMENSION UNITS	SCALE	CURRENT REV DESC:								<b>molex</b>			
$\frac{F}{A} = 0$	INCH/MM	NTS	EWR-14242-J ADDED LABEL FORMAT FOR 73251-4966											
DIVISIONAL SYMBOLS	GENERAL TOLERANCES (UNLESS SPECIFIED)													
	$\frac{F}{C} = 0$	ANGULAR TOL		±	°	EC NO: 659677					SMA JACK RA			
DIVISIONAL SYMBOLS	$\frac{F}{P} = 0$	4 PLACES	±	DRWN: JSU18 2021/03/24								BLKHD RM PCB TH SMA-J/RA/PCB, EWR-2144		
		3 PLACES	±	CHK'D: YCHENG 2021/04/06								PRODUCT CUSTOMER DRAWING		
		2 PLACES	±	APPR: YCHENG 2021/04/06								DOCUMENT NUMBER		
		1 PLACE	±	INITIAL REVISION:								DOC TYPE		
	0 PLACES	±	DRWN: JLEE02 2014/03/28								DOC PART			
	DRAFT WHERE APPLICABLE MUST REMAIN WITHIN DIMENSIONS		THIRD ANGLE PROJECTION		DRAWING		SERIES		MATERIAL NUMBER		CUSTOMER		SHEET NUMBER	
					C-SIZE	73251	SD-73251-496		GENERAL MARKET		PSD 000		B9	