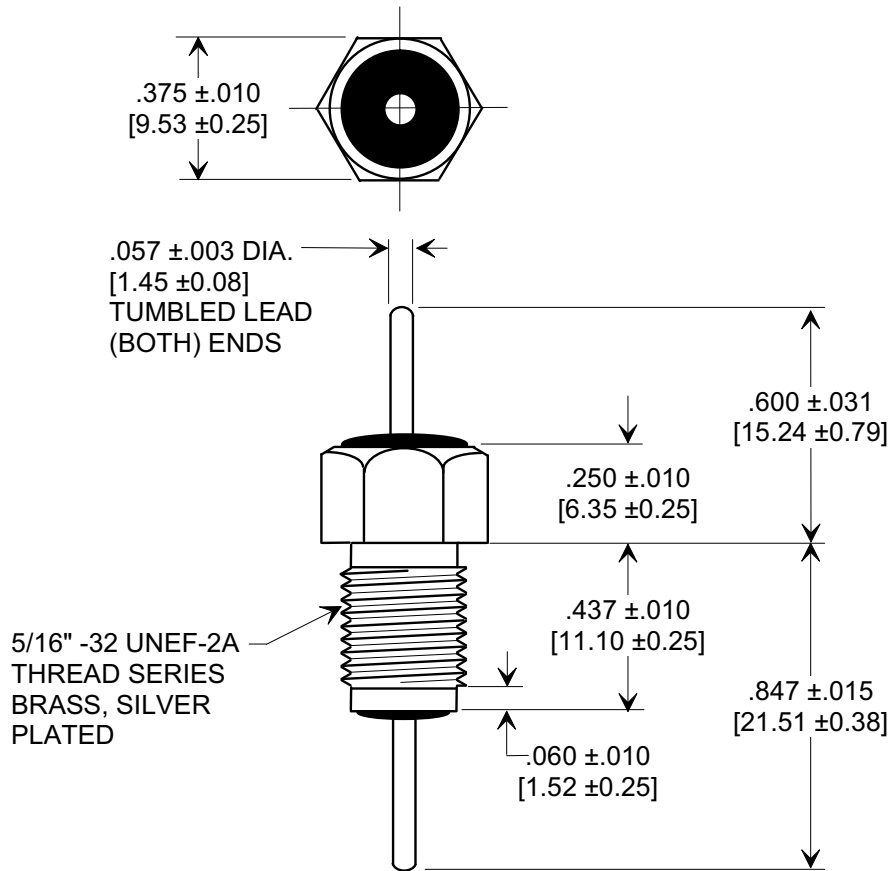
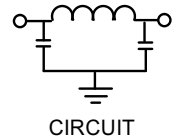
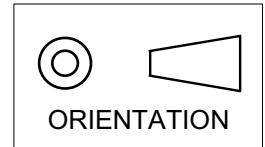


**MARKETING SALES DRAWING**  
**DIMENSIONS IN INCHES - DO NOT SCALE THIS DRAWING**  
**DIMENSIONS IN METRIC - [ ]**

Electrical Testing  
per Tusonix standard  
test plans and Mil-Std-202  
Test Methods.



**NOTES:**

- TUSONIX STANDARD PART NUMBER: 4206-020.  
 TUSONIX RoHS COMPLIANT PART NUMBER: 4206-020 LF.  
 CUSTOMER MUST SPECIFY STANDARD OR RoHS PART NUMBER WHEN ORDERING.
- LEAD FINISH: SILVER PLATED COPPER.
- PART MARKING: TRADEMARK AND VARIATION NUMBER ON HEX FLATS.  
 STANDARD PART: BLACK INK. RoHS PART: GREEN INK.

4206	020	1500/ 3000	330 V	N/A	25 A	5	45	70	70	3000 VDC (1) SECOND
			85°C	125°C		10 MHz	100 MHz	1 GHz	10 GHz	
STYLE	VAR.	CAP. (pF)	WORKING VOLTAGE AC 50/60 Hz		CURRENT dc (A)	MINIMUM NO LOAD INSERTION LOSS (dB) AT 25°C PER MIL-STD -220				DIELECTRIC WITHSTANDING VOLTAGE

X-2015 Rev-0 REVISION RECORD Original Release C.O. <b>960308-1</b> ADDED NOTES, METRIC & CIRCUIT. S.M. 10-25-05 <b>20051006-1-12</b>	<b>0</b>	TOLERANCES unless otherwise specified 2 PLC. DECIMAL ± 3 PLC. DECIMAL ± NOTED ANGLES ±	Title <b>EMI BUSHING FILTER</b>	
	<b>1</b>		Drawn S.M. 03-08-96	
	<b>TUSONIX</b> TUCSON, ARIZONA		Approved B.Mc. 03-08-96	
	<b>A</b>	<b>4206-020</b>		