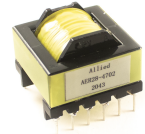


ER28 Transformer

AER28-4702



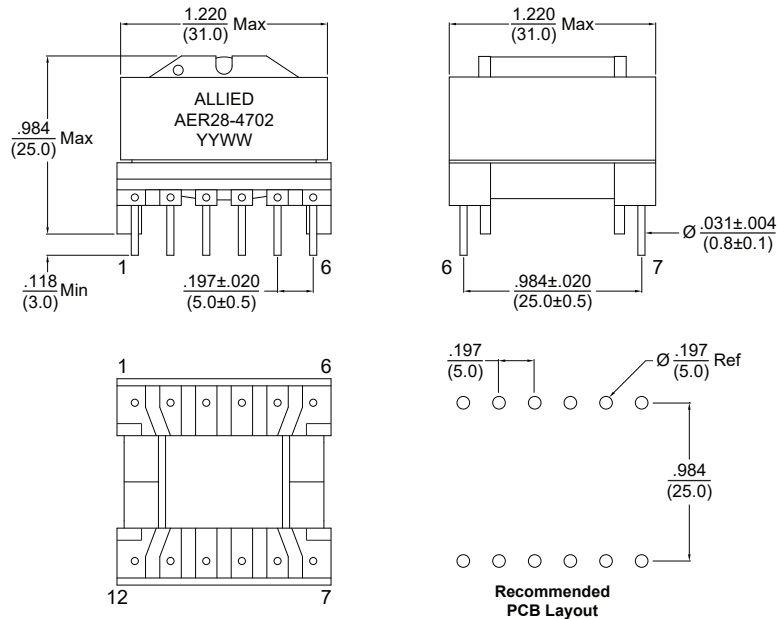
- ER28 Package
- 12 Pin Through Hole Design
- Extended Operating Temp Range: -40°C to +125°C

Electrical Specification @ 25°C						
Inductance @10KHz, 0.1V		Leakage Inductance @10KHz, 0.1V		Turns Ratio @ 15.75KHz, 1.0V		
@ 0A (1 - 4) Tie (2,3)	@6A (1-4) Tie (2,3)	(1 - 4) Tie 2,3 (Short pins 5,6,7,8,9,10,11,12)		(1-4) : (5-6) Tie 2,3	(1-4) : (10,11,12-7,8,9) Tie 2,3	(1-3) : (2-4)
200µH±10%	≥160µH	5.0µH Max		6 : 1 ±2%	4 : 1 ±2%	1 : 1 ±2%
DCR (mΩ) Max					Hi-Pot VAC / 5mA / 2Sec	
(1 - 4) Tie 2,3	(5 - 6)	(7 - 10)	(8 - 11)	(9 - 12)	1,2 to 7,8,9	1,2 to 5
110	133	30	30	30	3200	1500

All specifications subject to change without notice.

MECHANICAL

DIMENSIONS: $\frac{\text{inch}}{\text{mm}}$



SCHEMATICS

