

PB400 SERIES PUSHBUTTON SWITCH

ANTI-VANDAL SWITCHES
 DETECTOR SWITCHES
 DIP SWITCHES
 KEYLOCK SWITCHES
 NAVIGATION SWITCHES
PUSHBUTTON SWITCHES
 ROCKER SWITCHES
 ROTARY SWITCHES
 SLIDE SWITCHES
 SNAP ACTION SWITCHES
 TACTILE SWITCHES
 TOGGLE SWITCHES
 CAP OPTIONS



APPLICATIONS / MARKETS



RoHS

SPECIFICATIONS

Electrical Rating: 3A @ 30 VDC
Electrical Life: 6,000 Cycles
Contact Resistance: 30mΩ Max. Initial
Insulation Resistance: 500MΩ Min. @ 500VDC
Dielectric Strength: 500VAC for 1 minute
Operating Temperature: -5°C to 60°C
Terminal: Copper, Silver Plated
Travel: Switch to make: 1.8mm
 Latch: 2.2mm (Latching)
 Full Actuation: 3.2mm
Contact Arrangement: DPST
Actuation Force: 3N~7N

FEATURES & BENEFITS

- Low cost
- Right Angle pushbutton switch
- DPST
- Momentary or Latching function
- 3.2mm travel
- Optional black cap

PART NUMBER CONFIGURATOR

Series



PB400

Mechanical Configuration



EE - Latching
 OA - Momentary

Contact Material



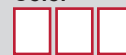
Q - Silver

Cap



X - No Cap
 R1 - Cap (8.8mm)

Cap Color



BLK - Black

Specifications subject to change without notice 12.19.2017



E-SWITCH®

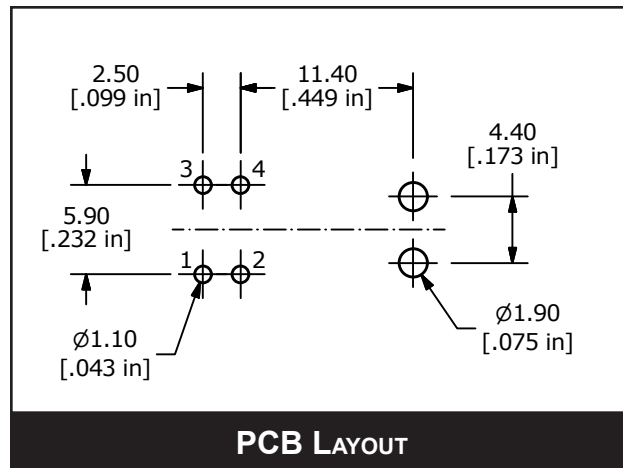
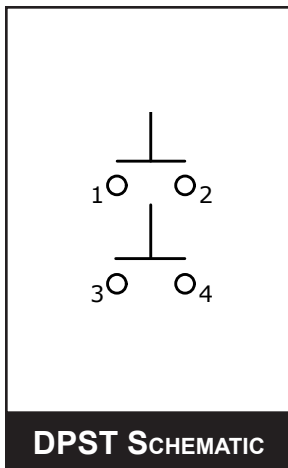
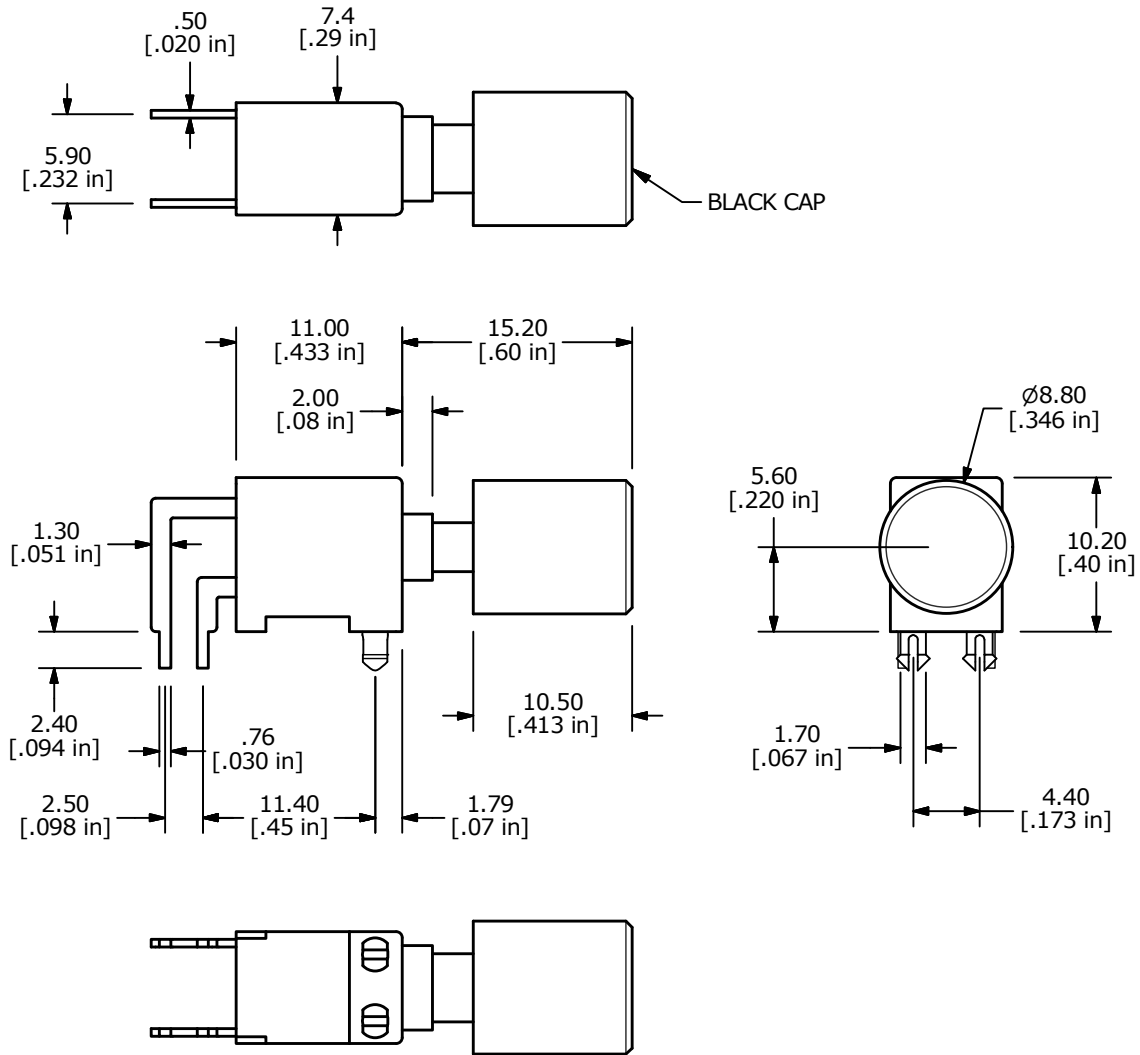
www.e-switch.com

800.867.2717

1

PB400 SERIES PUSHBUTTON SWITCH

BODY DIMENSIONS - WITH CAP



PB400 SERIES PUSHBUTTON SWITCH

BODY DIMENSIONS - WITHOUT CAP

