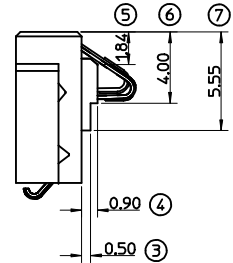
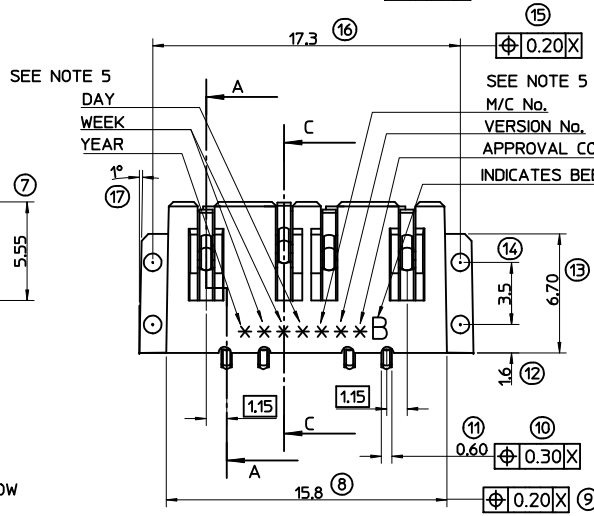
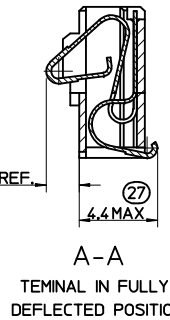
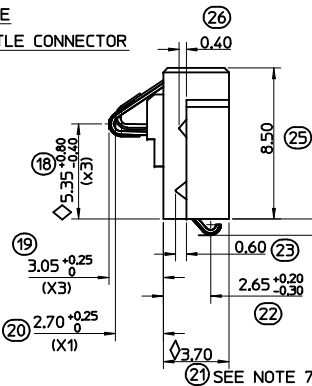


E-E  
SCALE 20:1  
(FOR BATTERY AND PCB SIDES)



TERMINALS OMITTED FOR CLARITY TO SHOW PLASTIC DIMENSIONS

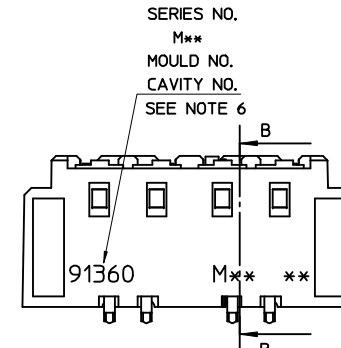
C-C  
BACKGROUND OMITTED



A-A  
TERMINAL IN FULLY DEFLECTED POSITION

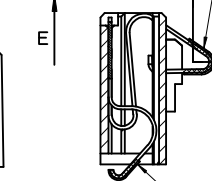
TERMINAL IN UNDEFLECTED POSITION

VERSION No.	DESCRIPTION
3	MATERIAL CHANGED FROM GREY TO BLACK



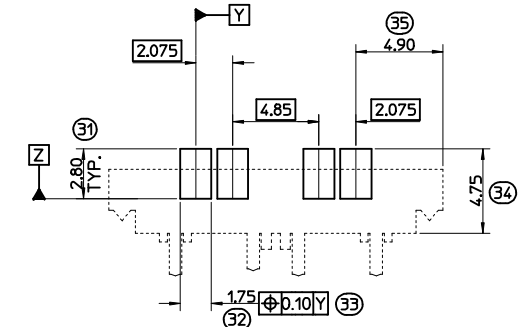
SERIES NO.  
M\*\*  
MOULD NO.  
CAVITY NO.  
SEE NOTE 6

GOLD PLATING AREA  
SEE NOTE 2



GOLD PLATING AREA  
SEE NOTE 2

B-B



RECOMMENDED PCB LAYOUT

NOTES:

- MATERIALS:**  
HOUSING: POLYESTER (PBT), 30% GLASS FILL, UL94 V-0, COLOUR BLACK  
CONTACT: PHOSPHOR BRONZE CuSn8 0.15 REF. THICK
- PLATING:**  
2.5um NICKEL UNDERCOAT ALLOVER, 0.76um HARD GOLD AT CROWN POINT. GOLD FLASH PRESENT OVER BEADED AREA.
- PACKAGING:** TAPE AND REEL
- PART WEIGHT** IS 0.66g
- DATECODE** CONSISTING OF YEAR, WEEK, DAY, M/C NO., VERSION No., APPROVAL CODING. APPROVAL CODING: 'V' INDICATES PART FROM PRE-APPROVED LINE. 'A' INDICATES PART FROM APPROVED LINE.  
TO BE HOT STAMPED WITH 1.6mm HIGH TEXT.
- TEXT** TO BE 1.0mm HIGH & RECESSED 0.1mm - M\*\* DENOTES MOLEX ENTITY WHERE PART WAS MOULDED: MXI-SHANNON, MSH-SHANGHAI, MX=US
- DIMENSIONS 21 AND 30** TO BE USED FOR MOULD Cpk STUDIES.
- SEMI-CIRCULAR FEATURES** SHOWN ARE OPTIONAL ON PART.  
LAST INSPECTION NUMBER USED: (36)

VACUUM PICK-UP AREA

ADDED SECTION	QUALITY SYMBOLS
EC NO: E2001-1297	WHITE DIAMOND
DRWN:MKUBOVC 2001/07/02	◆ 3
CHKD: 2001/07/03	BLACK DIAMOND
APPR: MWILHITE 2001/07/03	◆ 1
REV	DESCRIPTION

GENERAL TOLERANCES (UNLESS SPECIFIED)	
4 PLACES	± 0.10
3 PLACES	± 0.15
2 PLACES	± 0.20
1 PLACE	± 0.30
ANGULAR ±1/2°	
DRAFT WHERE APPLICABLE	
MUST REMAIN WITHIN DIMENSIONS	

SCALE 5:1	DESIGN UNITS METRIC
DIMENSION STYLE MM ONLY	
DRAWN BY EKELLY	DATE 99/07/30
CHECKED BY CTOBIN	DATE 99/07/30
APPROVED BY MWILHITE	DATE 99/07/30

THIRD ANGLE PROJECTION	REVISE ON CAD ONLY
TITLE BATTERY CONNECTOR	
MATERIAL NO. 91360-0003	
DOCUMENT NO. SD-91360-008	SHEET NO. 1 OF 1
THIS DRAWING CONTAINS INFORMATION THAT IS PROPRIETARY TO MOLEX INCORPORATED AND SHOULD NOT BE USED WITHOUT WRITTEN PERMISSION	