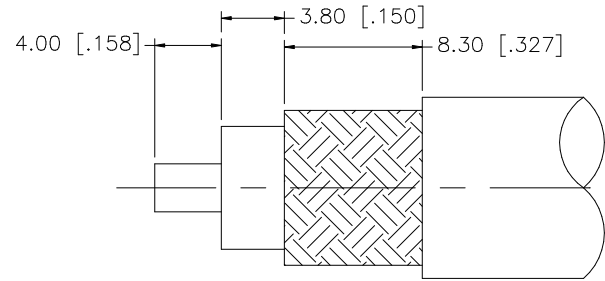
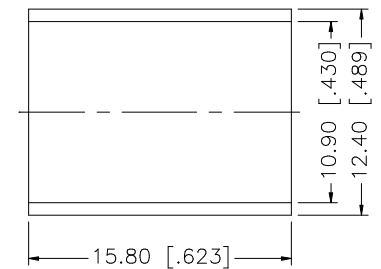
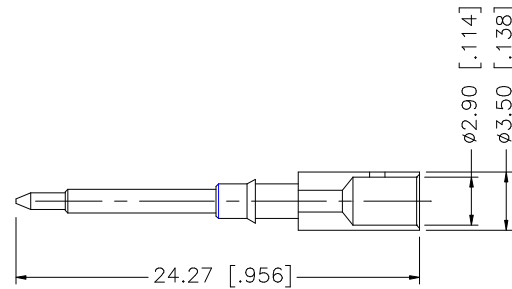
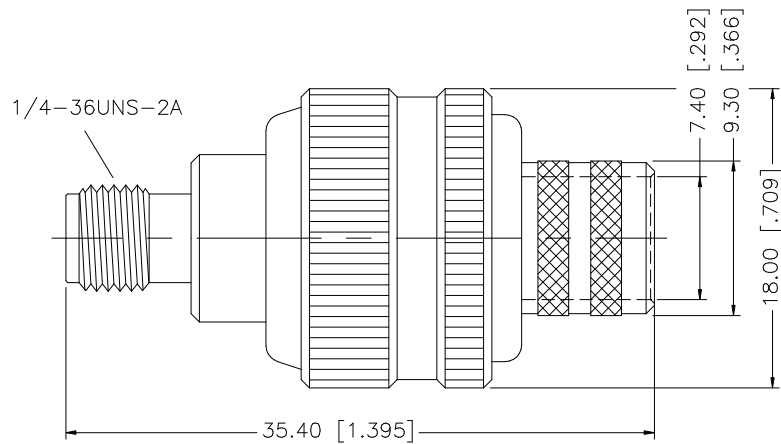


REV.	DATE	DESCRIPTION
NC	01/11/07	INITIAL RELEASE



RECOMMENDED
CABLE STRIPPING DIM'S



CRIMP NOTES:

1. CRIMPED FERRULE HEX CRIMP SIZE .429"
2. CRIMPED CONTACT PIN HEX CRIMP SIZE .118"

8					<small>UNLESS OTHERWISE SPECIFIED DIMENSIONS ARE IN MILLIMETERS. DIMENSIONS IN [] ARE IN INCHES AND FOR CUSTOMER REFERENCE ONLY.</small> <small>UNLESS OTHERWISE SPECIFIED TOLERANCES FOR MILLIMETERS ARE: 0.5 - 8mm ± 0.20mm 8 - 30mm ± 0.40mm 30 - 120mm ± 0.50mm</small> <small>UNLESS OTHERWISE SPECIFIED TOLERANCES FOR INCHES ARE: .020 - .315 ± ± 0.007" .315 - 1.180 ± ± 0.015" 1.180 - 4.724 ± ± 0.020"</small>	APPROVALS	DATE	<h1 style="color: blue;">Amphenol Connex</h1> <p>SMA REVERSE POLARITY CRIMP JACK (FOR BELDEN 9913, 9914, LMR400)</p>						
7				DRAWN		G.R.S.	01/11/07							
6				CHECKED										
5				ISSUED										
4	FERRULE	COPPER	GOLD	1		SHEET	1 OF 1							
3	CONTACT PIN	BRASS	GOLD	1	PART DESCRIPTION									
2	INSULATOR	TEFLON	NATURAL	1	SMA REVERSE POLARITY CRIMP JACK (FOR BELDEN 9913, 9914, LMR400)									
1	BODY	BRASS	GOLD	1	PART NO.									
	DESCRIPTION	MATERIAL	FINISH	QTY	132332RP									
				DO NOT SCALE DRAWING	CAD FILE	C:/132/132332RP.DWG	DWG. NO.	132332RP.DWG	REV.	A	SIZE	A	SCALE	NA