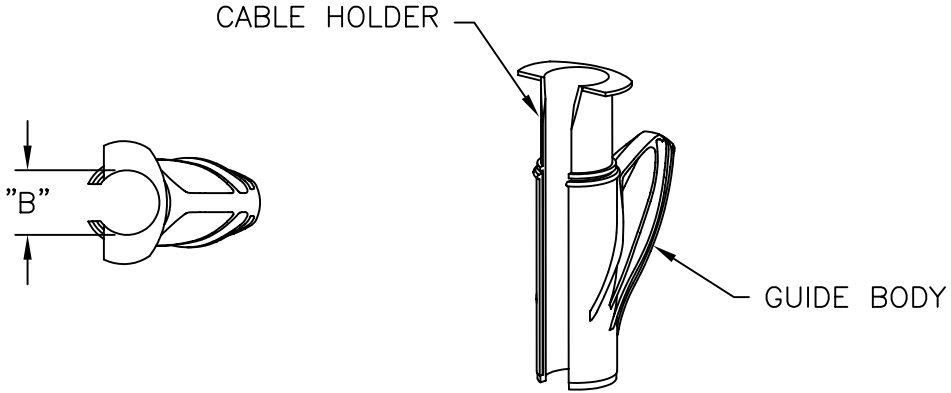


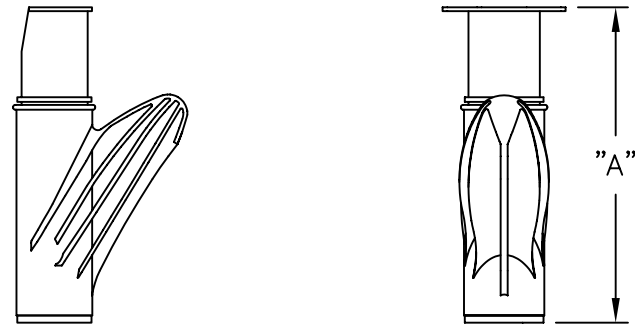
PART NO.	"A" REF.	MAX. BUNDLE DIA. "B"	TO BE USED WITH
CAT-08-PP	2.80 (71.0)	.37 (9.5)	SHR-08-YYY*
CAT-15-PP	3.19 (81.0)	.63 (16.0)	SHR-15-YYY*
CAT-20-PP	3.94 (100.0)	.79 (20.0)	SHR-20-YYY*
CAT-25-PP	4.45 (113.0)	.96 (24.5)	SHR-25-YYY*
CAT-32-PP	5.67 (144.0)	1.22 (31.0)	SHR-32-YYY*

*YYY-SHR MATERIAL



NOTES:

- MATERIAL:
 - A) GUIDE BODY: -POLYPROPYLENE (RMS-268); COLOR: ORANGE.
 - B) CABLE HOLDER - POLYACETAL (RMS-267), COLOR: WHITE
- TOOL AVAILABLE IN BULK PACKAGES OF 100/BOX.
TO ORDER ADD "-BU" TO THE PART NO.
- CAT-20, "-25" AND "-32" AVAILABLE IN GLASS FILLED NYLON (RMS-253) FOR HEAVY DUTY APPLICATION.
TO ORDER, REPLACE "-PP" WITH "-IX"; COLOR: BLUE.



TITLE: CABLE APPLICATOR TOOL				⊕	▭	DWG IN IN (MM)	QR
TOLERANCES UNLESS NOTED .XX=±.010 .XXX=±.005 FRAC=±1/64 ANG=±1°		FILE # CAT	DWN: SM	APP:		FINAL	
MAT'L: SEE NOTES		RE: RICHCO, INC.	DT: 03.01.02	DT:	PART #		PRINT TYPE
SEE ECN #1319 FOR CHANGES		SK 04.19.07	RICHCO INC. PO BOX 804238, CHICAGO, 60680 (773) 539-4060		SEE TABLE		CA
REDRAWN FROM RICHCO UK		SM 03.01.02					
DESCRIPTION		ENGR DATE					

B	SEE ECN #1319 FOR CHANGES	SK 04.19.07
A	REDRAWN FROM RICHCO UK	SM 03.01.02
REV	DESCRIPTION	ENGR DATE