

- 1
- 2
- 3
- 4
- 5
- 6
- 7
- 8
- 9
- 10
- 11
- 12
- 13
- 14
- 15
- RH



MATERIAL

Glass-fibre reinforced polyamide based (PA) technopolymer, black colour, matte finish.

PACKING RING

NBR synthetic rubber.

MAXIMUM CONTINUOUS WORKING TEMPERATURE

100°C.

ATEX DIRECTIVE COMPLIANCE

The plugs of the TN-EX series comply with Health and Safety Requirements intended in 94/9/EC ATEX European Directive (explosive atmospheres) for equipments in Group II, category 2GD. Plugs have "k" protection degree and can therefore be mounted in equipments protected by means of "immersion in liquid", without lowering protection degree.

II 2 G D k T5, marked on the TN-EX plugs, represents the identification according to ATEX directive.

II: group of substances for which the product is suitable

2: identification of the category

G: identification of the type of explosive atmosphere (Gases or vapours)

D: identification of the type of explosive atmosphere (Dust)

k: protection degree by means of immersion in liquid

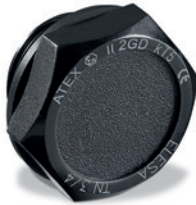
T5: temperature class

Ambient and/or fluid temperature: -30 ÷ +100°C

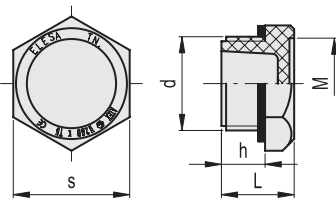
The declaration of conformity to European Directives of this product is available and it is part of the product itself.

TECHNICAL DATA

The tightening torque indicated in the table guarantees an optimal tightness, keeping the packing ring in the correct position.



ELESA Original design



BSP

METRIC

Code	Description	d	h	s	L	M	Tightening torque [Nm]	
58296-EX	TN.3/8-EX	G 3/8	9	22	16	17	8+10	5
58297-EX	TN.1/2-EX	G 1/2	11	26	18	20.5	8+10	8
58298-EX	TN.3/4-EX	G 3/4	12	32	20	25	10+12	14

MATERIAL

Matte anodised aluminium.

Self-adhesive back for sticking to the plain surface of the plug head.

STANDARDIZED GRAPHIC SYMBOLS

- **MH-N**: plain surface, without symbols.

- **MH-C**: with graphic symbol "fill" according to DIN regulations.

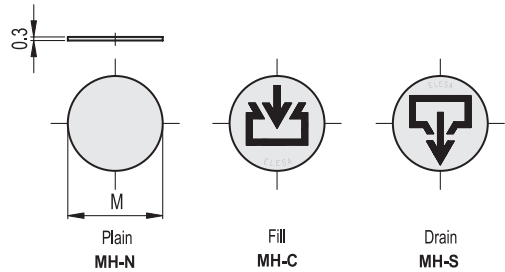
- **MH-S**: with graphic symbol "drain" according to DIN regulations.

MAXIMUM CONTINUOUS WORKING TEMPERATURE

100°C.

APPLICATIONS

The plates with graphic symbols for oil plugs are suitable for the application on plugs type TN. (see page 1298), TNR (see page 1300), TN-EX (see page 1302), TCR. (see page 1301), TCD. (see page 1303), TSD. (see page 1307) and TSR. (see page 1309).



MH-N		MH-C		MH-S		METRIC
Code	Description	Code	Description	Code	Description	M*Ø
39501	MH.19-N	39521	MH.19-C	39541	MH.19-S	15
39503	MH.22-N	39523	MH.22-C	39543	MH.22-S	17
39505	MH.26-N	39525	MH.26-C	39545	MH.26-S	20.5
39507	MH.32-N	39527	MH.32-C	39547	MH.32-S	25
39509	MH.38-N	39529	MH.38-C	39549	MH.38-S	31

M* = diameter of the seat of the correspondent plug.