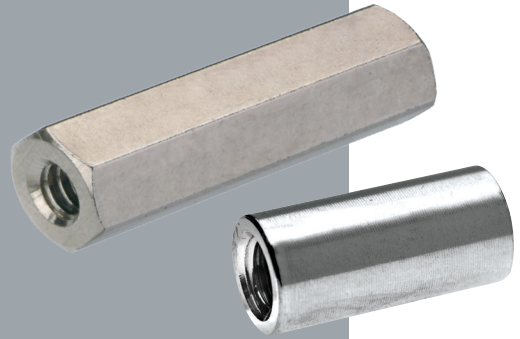


Metric Spacers

SPACERS

Threaded Female Spacers

- Available in a variety of standard body lengths.
- Brass spacers: base material is free-machining brass, with nickel plating.
- Plastic material: Nylon 66 UL94V-2.
- Longer thread lengths may not be threaded through the complete length, but have female threads at both ends.



| HEXAGONAL | CIRCULAR |
|---|--|
| <p>Materials</p> <p>Base material: Brass or Plastic</p> <p>Finish: Nickel</p> <p>Brass: Nickel</p> | <p>Materials</p> <p>Base material: Brass</p> <p>Finish: Nickel</p> <p>Brass: Nickel</p> |
| <p>5.00 A/F (R25-100, R30-100) 5.50 A/F (R30-101, R30-161) 7.00 A/F (R40-100)</p> <p>M2.5 (R25), M3 (R30) or M4 (R40)</p> <p>Length</p> | <p>Ø4.76</p> <p>M3</p> <p>Length</p> |

HOW TO ORDER

RXX - XXX XX XX

| SERIES CODE | |
|----------------|-------------------------------|
| R25-100 | Hexagonal, Brass, M2.5 Thread |
| R30-100 | Hexagonal, Brass, M3 Thread |
| R30-101 | Hexagonal, Brass, M3 Thread |
| R30-161 | Hexagonal, Plastic, M3 Thread |
| R30-500 | Circular, Brass, M3 Thread |
| R40-100 | Hexagonal, Brass, M4 Thread |

| FINISH | |
|-----------|----------------------|
| 00 | White (Plastic only) |
| 02 | Nickel (Brass only) |

| LENGTH (mm) | |
|-----------------------------|------------------|
| 06 to 16, 18, 20, 25 | R30-161, R40-100 |
| 04 to 16, 18, 20, 25 | Other |

All dimensions in mm.