

Cold Plates & Spacer Blocks



Cold Plates

| Series # | Assembly Hole Spacing A | Number & maximum size of TEC |
|----------|---------------------------|------------------------------|
| -100 | 1.5" (38mm) O.C. | 1 x 1.34" (34mm) |
| -200 | 2.0" (51mm) O.C. | 1 x 1.73" (44mm) |
| -300 | 3.0" (76mm) O.C. | 1 x 2.44" (62mm) |
| -400 | 2.0" (51mm) O.C. (2 sets) | 2 x 1.73" (44mm) |

MELCOR's cold plates can serve either as a heat spreader distributing a cooling or heating effect over a larger area, or as a cooling platform. Most of our cold plates are for use with a single thermoelectric module, but the CB-401 is designed for use with two thermoelectrics. The cold plates are intended for use with our thermoelectrics as part of a complete thermoelectric system.

Features

- All aluminum construction
- Machined finish
- Sensor hole for temperature monitoring 0.062" (1.58mm) diameter, 0.75" (19mm) deep
- Tapped or clearance assembly holes English 6-32 or Metric M3

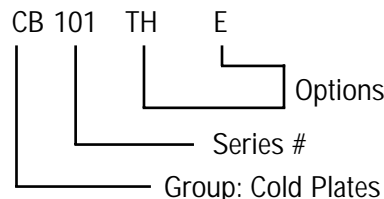
Dimensions

| Model | Width in (mm) | Length in (mm) | Height in (mm) |
|--------|---------------|----------------|----------------|
| CB-101 | 2.0 (51) | 2.0 (51) | 0.25 (6.4) |
| CB-201 | 3.0 (76) | 3.0 (76) | 0.25 (6.4) |
| CB-301 | 4.0 (102) | 4.0 (102) | 0.25 (6.4) |
| CB-401 | 3.0 (76) | 6.0 (152) | 0.25 (6.4) |

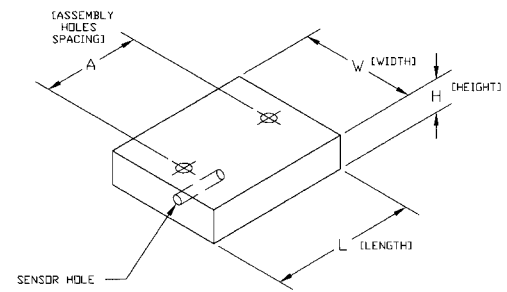
| Options | Description |
|---------|------------------------|
| NH | No Holes |
| CL* | Clearance Holes |
| TH-E | Tapped Holes - English |
| TH-M | Tapped Holes - Metric |

*Standard

Models



Mechanical Characteristics



MELCOR's spacer blocks widen the gap between the cold surfaces and hot side heat exchanger, allowing for more insulation material. The spacer blocks are intended for use with our CP, PT, or HT series of thermoelectrics as part of a complete thermoelectric system.

Features

- All aluminum construction
- Machined finish
- Sensor hole for temperature monitoring 0.062" (1.58mm) diameter, 0.75" (19mm) deep
- Tapped or clearance assembly holes English 6-32 or Metric M3
- Height tolerance of $\pm 0.001"$

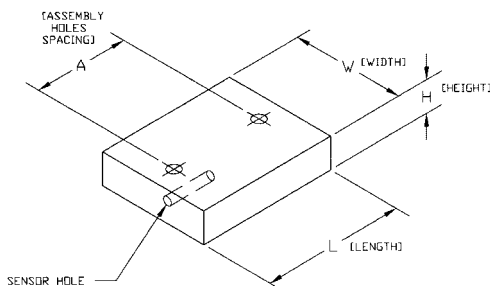
Spacer Blocks

| Series # | Assembly Hole Spacing A | Number & maximum size of TECs |
|----------|-------------------------------------|-------------------------------|
| -100 | 1.5" (38mm) O.C. | 1 x 1.34" (34mm) |
| -200 | 2.0" (51mm) O.C. | 1 x 1.73" (44mm) |
| -300 | 3.0" (76mm) O.C. | 1 x 2.44" (62mm) |
| -400 | Use two of the SB-201 spacer blocks | |

Dimensions

| Model | Width in (mm) | Length in (mm) | Height in (mm) |
|--------|---------------|----------------|----------------|
| SB-101 | 1.25 (32) | 1.75 (45) | 0.50 (12.7) |
| SB-201 | 1.62 (41) | 2.25 (57) | 0.50 (12.7) |
| SB-301 | 2.50 (64) | 3.25 (83) | 0.50 (12.7) |

Mechanical Characteristics



| Options | Description |
|---------|------------------------|
| NH | No Holes |
| CL* | Clearance Holes |
| TH-E | Tapped Holes - English |
| TH-M | Tapped Holes - Metric |

*Standard

Models

