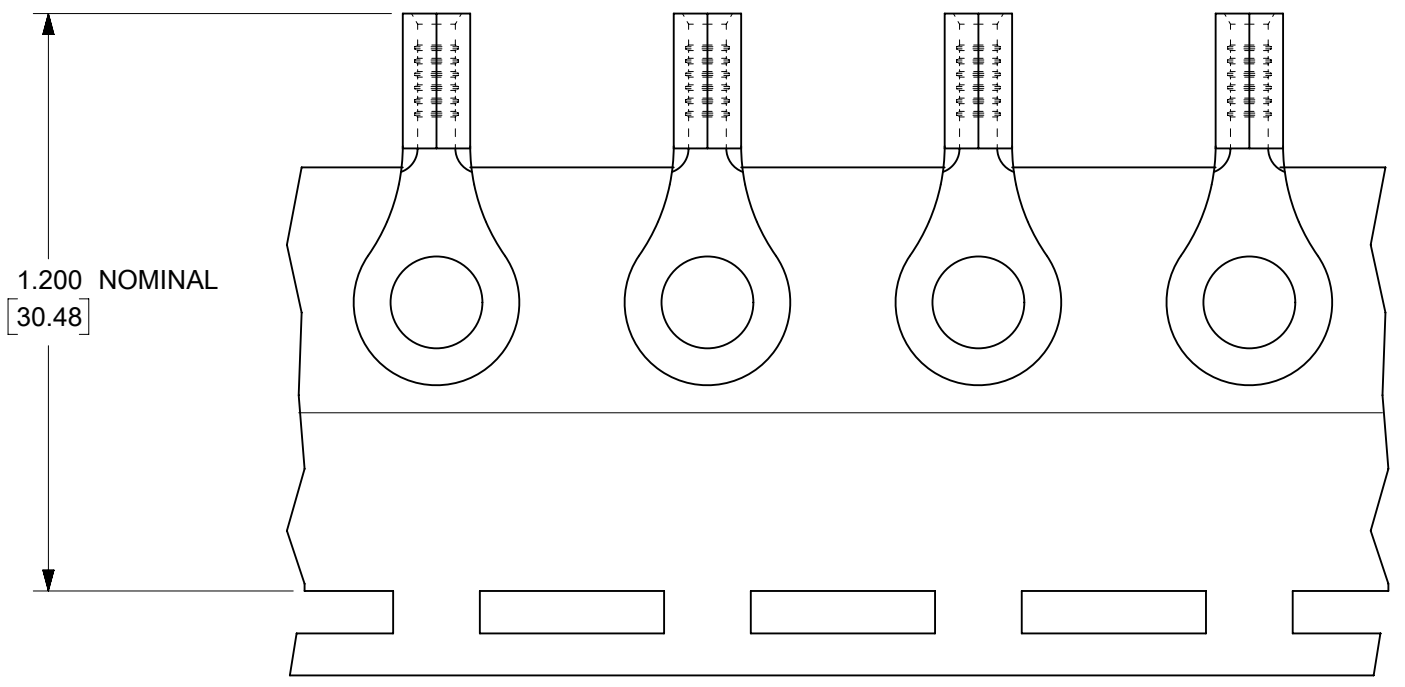
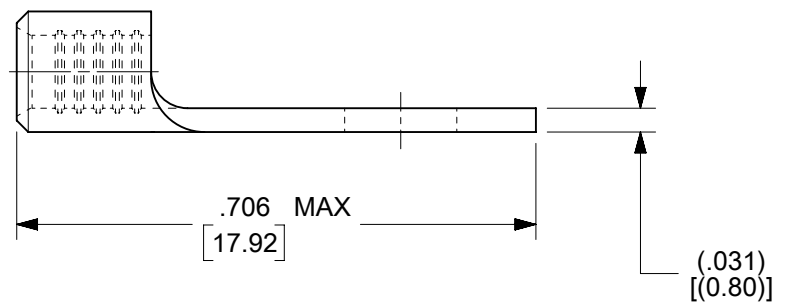
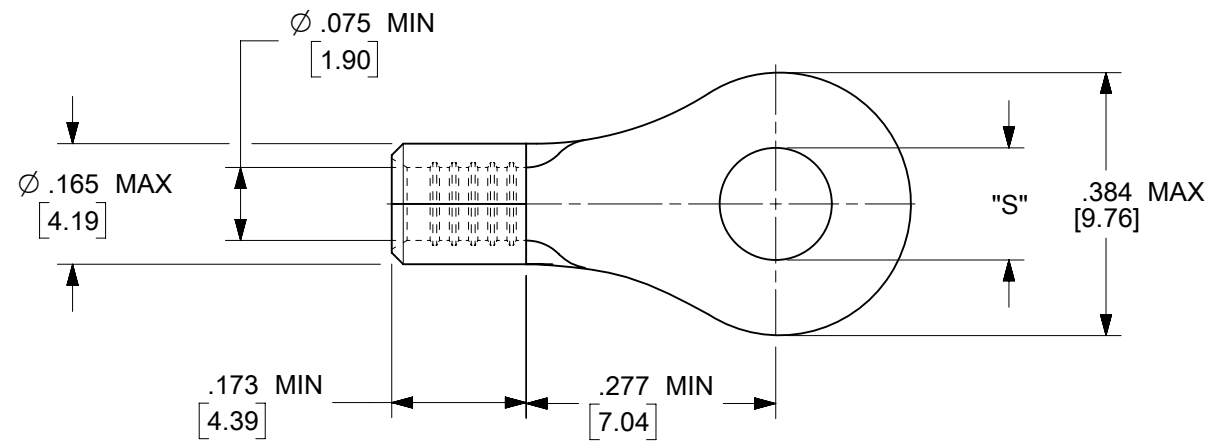


MATERIAL NO.	ENG. NO.	STUD SIZE	"S" MAX	DESCRIPTION
192030388	19203-0388	10	.212/5.38	LOOSE
192030052	B-S-137-10T	10	.212/5.38	TAPE

(E1)



PARTS ON TAPE

- NOTES:
1. MATERIAL: STEEL
 2. WIRE SIZE: 16-14 AWG (1.5-2.5 MM²)
 3. FINISH: NICKEL PLATED WITH OPTIONAL COPPER FLASH UNDERPLATING, IS ALLOWED FOR IMPROVED ADHESION.
 4. PART IS ROHS COMPLIANT.
 5. AMBIENT OPERATING TEMPERATURE UP TO 900 °F (483 °C).

(E1)

THIS DRAWING CONTAINS INFORMATION THAT IS PROPRIETARY TO MOLEX ELECTRONIC TECHNOLOGIES, LLC AND SHOULD NOT BE USED WITHOUT WRITTEN PERMISSION										
FUNCTIONAL SYMBOLS	FA = 0	IN/MM	SCALE	CURRENT REV DESC: REMASTERED IN ECTR AND UPDATED NOTE						
	FC = 0	4 PLACES ±	4:1	GENERAL TOLERANCES (UNLESS SPECIFIED)						
DIVISIONAL SYMBOLS	FD = 0	MM	INCH	EC NO: 708789		2022/05/10		RING TONGUE TERMINAL, 16-14 AWG, KRIMPTITE, 900 DEG F (483 DEG C)		
		3 PLACES ±		DRWN: PAWANC		2022/06/01		PRODUCT CUSTOMER DRAWING		
		2 PLACES ±		CHKD: DMYRICK		2022/06/02		DOCUMENT NUMBER		
		1 PLACE ±		APPR: JMACNEIL		2022/06/02		SD-19203-017		
	0 PLACES ±			INITIAL REVISION:		2005/04/06		DOC TYPE	DOC PART	REVISION
	ANGULAR TOL ± °			DRWN: DMYRICK		2005/04/06		PSD	001	E1
				APPR: RDEROSS		2005/04/06		MATERIAL NUMBER	CUSTOMER	SHEET NUMBER
DRAFT WHERE APPLICABLE MUST REMAIN WITHIN DIMENSIONS			THIRD ANGLE PROJECTION		DRAWING	SERIES	MATERIAL NUMBER	CUSTOMER	SHEET NUMBER	
					B-SIZE	19203	SEE CHART	GENERAL MARKET	1 OF 1	