

LDX6050

**7" (178mm) wide — Electric Label Dispenser
"HIGH SPEED"**

- Ideal for wider packaging type labels
- Automatically peels and advances labels
- New built-in hanging capability for use with workbenches and LDHANGER16
- Photosensor accuracy and reliability
- All metal construction
- High torque motor for heavy rolls of labels
- Will dispense labels from .25" to 7" (6 to 178mm) in width
- Will dispense labels from .50" to 6" (13 to 152mm) in length
- Made in U.S.A.



HANGING BRACKET



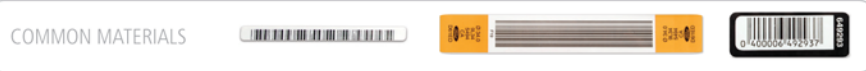
LDX6025

**7" (178mm) wide — Electric Label Dispenser
"HIGH SPEED"**

- Ideal for wide, short length labels
- Automatically peels and advances labels
- New built-in hanging capability for use with workbenches and LDHANGER16
- Photosensor accuracy and reliability
- All metal construction
- High torque motor for heavy rolls of labels
- Will dispense labels from .25" to 7" (6 to 178mm) in width
- Will dispense labels from .125" to 6" (3 to 152mm) in length
- Made in U.S.A.



HANGING BRACKET



Electric

Additional info for LDX6025 & LDX6050

- Will dispense labels and die-cut parts
- Adjustable strip plate for hard-to-release labels
- Will accommodate core sizes of 1" (25mm) and 3" (76mm)
- Capable of dispensing labels made of paper, polyester, vinyl, acetate and foil
- Automatically rewinds liner scrap for a cleaner working environment
- Liner scrap is easily removed
- No tools required for adjusting to different size label
- No maintenance required
- All 230V machines are CE Certified

SPECIAL APPLICATIONS

- For clear labels please select Model # LDX6025C or LDX6050C

For 230V machines, please add "-2" to the end of the model number. (Example: LDX6025-2)

MODEL #	Liner Capacity	Width	Length	Roll Capacity	Feed Speed**	Dimensions	Electrical Requirements	Weight	
LDX6050	.25" to 7"	(6mm to 178mm)	.50" to 6"	(13mm to 152mm)	12" (31cm)	3.3"/sec** (8cm/sec.)	10.8"(L) x 13.2"(W) x 14.5"(H) 27.4cm(L) x 33.5cm(W) x 36.8cm(H)	100/120V 50/60Hz, <1 amp (230V 50/60Hz CE available)	11.3 lbs (5.12 kg)
LDX6025	.25" to 7"	(6mm to 178mm)	.125" to 6"	(3mm to 152mm)	12" (305mm)	1.6"/sec** (3.9cm/sec.)	14.5"(L) x 15.5"(W) x 11.0"(H) 368mm(L) x 394mm(W) x 279mm(H)	100/120V 50/60Hz, <1 amp (230V 50/60Hz CE available)	11.3 lbs (5.2 kg)

*LD6100 model specifications are the same as the above models, but the Feed Speed is 6.6"/Sec. **speed calculated at 60Hz