

Brad Direct-Link SW1000 Software

EtherNet TCP/IP



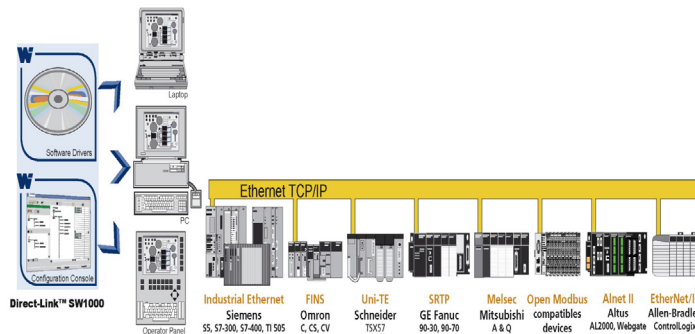
Direct-Link SW1000 software packages provide cost-effective, easy-to-use and reliable data exchange for industrial devices connected to Ethernet TCP/IP and Serial networks

Well adapted for embedded environments, Direct-Link SW1000 software packages are used by operator interface manufacturers and OEM equipment manufacturers needing to make their computerized systems communicate. Ideally suited for small and medium-sized applications with low time constraints, Direct-Link software solutions are widely adopted for technical management in the building sector, electrical installations, and Test and Measurement applications.

Features and Advantages

Complete software package for Windows PC-based applications (HMI, SCADA, MES, RDBM, customer developments and more)
Enables fast integration of industrial communication into applications

Available in Windows 32-bit and 64-bit (WoW64 subsystem)
Provides reliable data exchange with plant floor



Uses standard computer resources to collect (Ethernet port)
Ideally suited for embedded and light architecture (laptops, panel PCs, operator interfaces and workstations)

Supports multi-Ethernet TCP/IP protocols simultaneously
Offers economical and easy-to-use software



Protocols

Ethernet TCP/IP

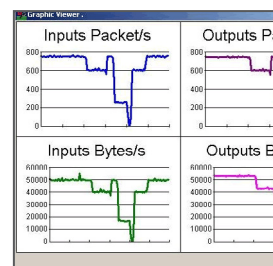
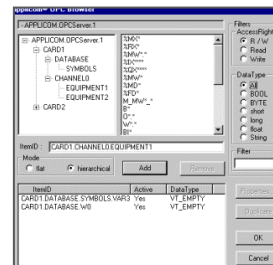
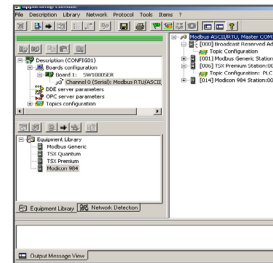
- All protocols can run simultaneously
- Allen-Bradley – PCCC and Logix5000 messaging (for ControlLogix and FlexLogix)
- Altus – Alnet II (AL2000 and Webgate series)
- Alstom – SRTP (Alspa C80-35 and C80-75 Series)
- GE Fanuc – SRTP (90-30 and 90-70 Series)
- Mitsubishi – Melsec (A and Q Series)
- Omron – FINS (C, CV and CS Series)
- Schneider – Open Modbus TCP/UDP (Premium and Quantum Series)
- Schneider – Uni-TE (Micro and Premium)
- Siemens – Industrial Ethernet (S5, S7 and TI-505 Series)
- Send/Rec on UDP

Data Servers

- OPC DA v3.0, 2.05 and 1.0a
- Library DLL

Supported OS

- Windows 32-bit and 64-bit (WoW64 subsystem)
- 2016 Server
- Windows 10
- 2012 Server
- Windows 8/8.1
- 2008 Server
- Windows 7
- 2003 Server



OPC Browser

Brad Direct-Link SW1000 Software

EtherNet TCP/IP



Ordering Information

Order No.	Engineering No.	Type of Protection	Tags	Protocols Included	Product Description
112027-0005	DRL-ALL-SWL-S	Software Key	Ethernet TCP/IP 1000 Tags	All protocols and data servers	Direct-Link SW1000 software package
112027-0006	DRL-ALL-SWL-U	Dongle for USB Port			
112027-0002	DRL-ALL-SWF-S	Software Key	Ethernet TCP/IP Full Tags	Siemens protocols (S5, S7, TI) and data servers	
112027-0003	DRL-ALL-SWF-U	Dongle for USB Port			
112027-5014	DRL-SIE-SWF-S	Software Key			
112027-5015	DRL-SIE-SWF-U	Dongle for USB Port			

www.molex.com/link/stacks.html

Molex is a registered trademark of Molex, LLC in the United States of America and may be registered in other countries; all other trademarks listed herein belong to their respective owners.