



## MINIATURE PUSH TO MAKE SWITCH

Miniature push button, push to make, red. L 28, D 10mm. Pack of 25.

| Description                   | Code | 1+ |
|-------------------------------|------|----|
| Push to make switch - 25 pack | 3401 |    |



## MINIATURE PUSH TO BREAK SWITCH

Miniature push button, push to break, black. L 30, D 12mm. Pack of 10.

| Description                    | Code | 1+ |
|--------------------------------|------|----|
| Push to break switch - 10 pack | 3402 |    |



## PCB MOUNT TACTILE SWITCH

A PCB mount switch. Single pole normally open contact.

L 6, W 6, H 9.5mm. Pack of 25.

| Description               | Code | 1+ |
|---------------------------|------|----|
| 6mm TACT switch - 25 pack | 3414 |    |

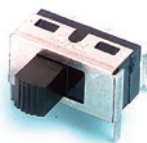


## FLAT PROFILE TACTILE SWITCH

A low profile PCB mount switch. Single pole normally open contact.

L 6, W 6, H 4.3mm. Pack of 25.

| Description                        | Code | 1+ |
|------------------------------------|------|----|
| Flat profile TACT switch - 25 pack | 3420 |    |



## PCB MOUNT SLIDE SWITCH

Right angle PCB mount slide switch. SPDT contacts.

L 14, W 13.2, H 9.4mm. Pack of 10.

| Description                      | Code | 1+ |
|----------------------------------|------|----|
| PCB mount slide switch - 10 pack | 3415 |    |

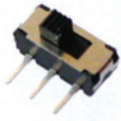


## HIGH CURRENT PCB MOUNT SLIDE SWITCH

Right angle PCB mount SPDT high current slide switch. Max current: 3A

L 14, W 13.2, H 9.4mm.

| Description                         | Code | 1+ | 10+ |
|-------------------------------------|------|----|-----|
| High current PCB mount slide switch | 3424 |    |     |



## MINIATURE PCB MOUNT SLIDE SWITCH - 10 PACK

Right angle PCB mount slide switch. SPDT contacts.

L 8.5, W 3.5, H 3.5mm. Pack of 10.

| Description                                | Code | 1+ | 10+ |
|--|------|----|-----|
| Miniature PCB mount slide switch - 10 pack | 3422 |    |     |

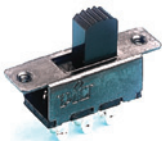


## DPDT SLIDE SWITCH

Standard DPDT slide switches with solder tag connections.

L 22, W 8, H 13mm. Pack of 10.

| Description                               | Code | 1+ |
|---|------|----|
| Standard slide switch (large) - 10 pack   | 3416 |    |
| Centre off slide switch (large) - 10 pack | 3417 |    |



## MINIATURE DPDT SLIDE SWITCH

Miniature DPDT slide switch. L 15, W 7, H 18mm. Pack of 10.

| Description                           | Code | 1+ |
|---------------------------------------|------|----|
| Miniature DPDT slide switch - 10 pack | 3404 |    |



## SPST ROCKER SWITCH

SPST rocker switch black, rectangular, snap fit.

L 21, W 9.6, H 28.5mm. Pack of 10.

| Description                         | Code | 1+ |
|-------------------------------------|------|----|
| SPST black 'I/O' actuator - 10 pack | 3406 |    |



## SPST ROUND ROCKER SWITCH

SPST rocker switch black, round, snap fit. L 16.5, Dia 23mm. Pack of 10.

| Description                        | Code | 1+ |
|------------------------------------|------|----|
| SPST round rocker switch - 10 pack | 3407 |    |



## SPDT TOGGLE SWITCH

SPDT standard toggle switch.

Body dimensions: L 13, W 8, H 9.8mm. Pack of 10.

| Description                  | Code | 1+ |
|------------------------------|------|----|
| SPDT toggle switch - 10 pack | 3408 |    |



## MINIATURE SPDT TOGGLE SWITCH

SPDT miniature toggle switch.

Body dimensions: **L** 13, **W** 8, **H** 9.5mm. Pack of 10.

| Description                            | Code    | 1+ |
|--|---------|----|
| Miniature SPDT toggle switch - 10 pack | 3423-10 |    |

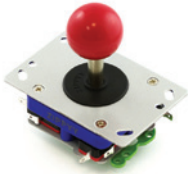


## SPST SUB MINIATURE TOGGLE SWITCH

SPST sub miniature toggle switch.

Body dimensions: **L** 8.1, **W** 5.1, **H** 8.6mm. Pack of 10.

| Description                                | Code | 1+ |
|--|------|----|
| Sub-Miniature toggle switch SPST - 10 pack | 3413 |    |



## ARCADE JOYSTICK

A heavy duty 4-way Pacman-type arcade joystick. The joystick uses four microswitches to detect on/off position and has an ABS plastic and solid alloy construction.

| Description                    | Code | 1+ |
|--------------------------------|------|----|
| Arcade joystick - short handle | 4680 |    |



## ARCADE PUSH BUTTONS

These 33mm round momentary convex push buttons are available in a range of bold colours, similar to the ones that you find on arcade games and have a simple screw in design.

| Description                     | Code | 1+ |
|---------------------------------|------|----|
| Arcade push button 33mm, pink   | 4676 |    |
| Arcade push button 33mm, blue   | 4677 |    |
| Arcade push button 33mm, green  | 4678 |    |
| Arcade push button 33mm, yellow | 4679 |    |





## SPST SQUARE LATCHING SWITCH

SPST square latching switch. L 34, W 15, H 15mm. Pack of 10.

| Description                                  | Code | 1+ |
|--|------|----|
| Square latching push button switch - 10 pack | 3405 |    |



## VIBRATION SWITCH

Mercury vibration switch. Normally open, pulsed closed on vibration. L 9.5, Dia 8.2mm.

| Description      | Code | 1+ |
|------------------|------|----|
| Vibration switch | 3412 |    |



## NON-MERCURY TILT SWITCH

Non-Mercury tilt switch. Horizontal mounting with make to break changeover at 10° either side of horizontal. L 10.2, Dia 4.7mm.

| Description             | Code | 1+ |
|-------------------------|------|----|
| Non-Mercury tilt switch | 3419 |    |



## PCB MOUNT TILT SWITCH - VERTICAL MOUNT

Non-Mercury tilt switch, PCB mount, vertical mount. L 6, W 5, H 11mm. Pack of 10.

| Description                    | Code | 1+ |
|--------------------------------|------|----|
| Vertical tilt switch - 10 pack | 3410 |    |



## PCB MOUNT TILT SWITCH - 90 DEG MOUNT

Non-Mercury tilt switch, PCB mount, 90° mount. L 6, W 5, H 11mm. Pack of 10.

| Description               | Code | 1+ |
|---------------------------|------|----|
| 90° tilt switch - 10 pack | 3411 |    |



## SPDT MICRO SWITCHES

SPDT micro switch, solder terminals. L 20.1, W 6.5, H 10.2mm. Pack of 10.

| Description                                      | Code | 1+ |
|--|------|----|
| Medium lever micro switch - 25mm Lever - 10 pack | 3403 |    |
| Long lever micro switch - 45mm Lever - 10 pack   | 3421 |    |