

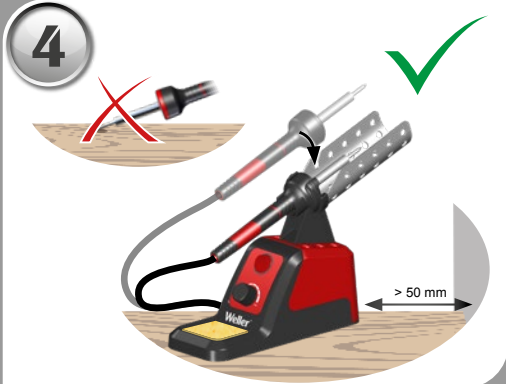
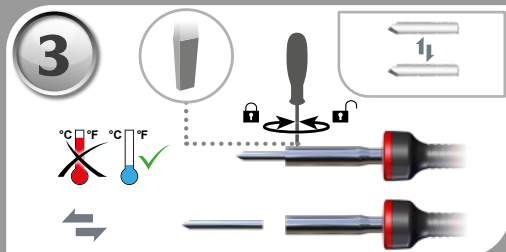
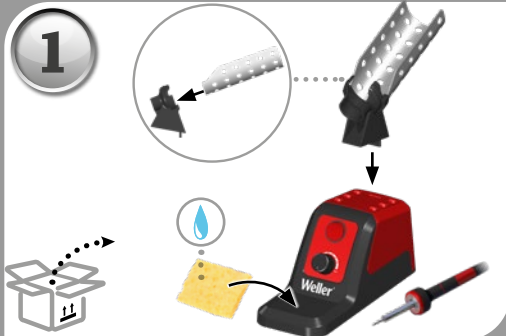
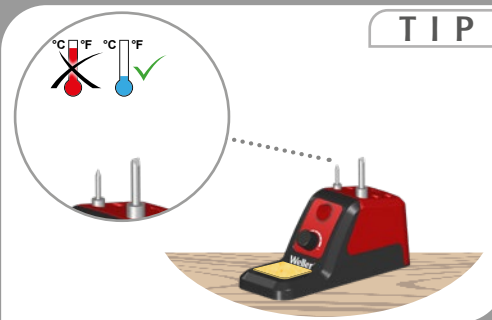
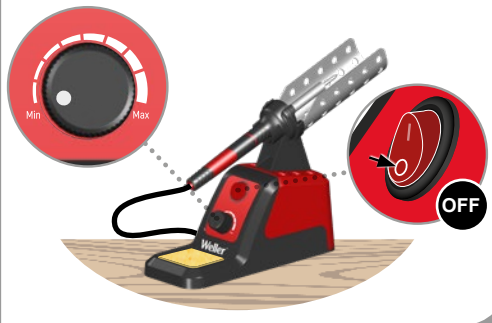
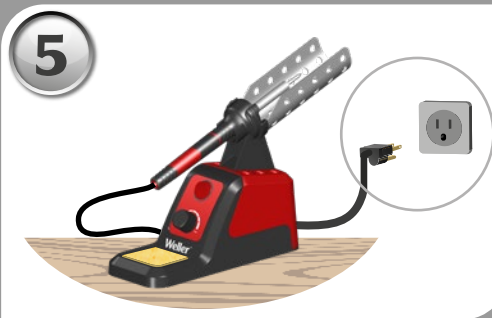
Weller®



WLSK3012A
WLSK6012A
WLSK8012A



EN Translation of the original instructions
ES Traducción del manual original
FR Traduction de la notice originale



- Carefully read the attached safety information, the safety information accompanying these operating instructions as well as the operating instructions for your control unit before putting the control unit into operation and observe the safety precautions specified therein.
- Only connect WELLER tools.
- If the device is faulty, active electrical conductors may be bare or the PE conductor may not be functional.
- Repairs must always be referred to a Weller-trained specialist.
- If the electrical tool's power supply cord is damaged, it must be replaced with a specially prefabricated power supply cord available through the customer service organisation.
- Avoid touching earthed objects such as pipes, heaters, stoves and refrigerators.
- Do not use the soldering tool in a damp or wet environment.
- Never work on voltage-carrying parts.

WARNING Risk of burns

- Risk of burns from the soldering tool while the control unit is operating. Tools may still be hot long after they have been switched off.**
- Always place the soldering tool in the safety rest while not in use.
 - Make sure the safety holder is stable.
 - Only replace solder tips when cold
- Risk of burning through liquid solder. Protect yourself against solder splashes.**
- Wear appropriate protective clothing to protect yourself against burns. Protect your eyes by wearing eye protection.
 - When working with adhesives, special attention must be paid to the warning information provided by the adhesive manufacturer.

WARNING Fire hazard

- Covering the soldering iron or the safety holder poses a fire hazard. Always keep objects well away from the soldering iron and safety holder.**
- Always keep objects well away from the soldering iron and safety holder.
 - Keep all combustible objects, liquids or gases well away from the hot soldering tool.

Store your soldering tool in a safe place. When not in use, units and tools should be stored in a dry, high or locked area out of the reach of children. Make sure that unused soldering tools are free of voltage and placed in the safety rest.

The power cable must only be plugged into the power socket or adapter approved for this purpose. Check to see if the mains voltage matches the ratings on the nameplate. Make sure the machine is switched off before plugging in.

Do not use the cable for purposes other than those for which it is intended. Never carry the unit by the cable. Do not use the cable to pull the plug out of the socket. Protect the cable against heat, oil and sharp edges.

Be alert. Pay attention to what you are doing. Be smart when using the unit. Do not use the soldering tool if you are having difficulty concentrating.

Avoid abnormal posture. Arrange your work station in an ergonomically correct way. Avoid bad posture when using the unit, as this can lead to postural problems.

The soldering tool must be operated only in perfect technical working order. Safety devices must not be deactivated.

Faults and defects must be repaired immediately. Before using the unit / tool, safety devices must be carefully checked to make sure that they are functioning properly and in the manner intended. Check that moving parts are functioning properly and are not sticking, and whether parts are damaged. All parts must be correctly fitted and must satisfy all the requirements necessary to guarantee troublefree operation of the unit.

Use the correct tool. Use only accessories or auxiliary devices which are included in the list of accessories or approved for use by the manufacturer. Use WELLER accessories or auxiliary devices on original WELLER equipment only. The use of other tools and other accessories can cause injury.

Secure the workpiece. Use clamping fixtures to hold the workpiece.

Use a solder fume extraction unit. If appliances for connecting solder fume extraction units are available, ensure that they are connected and used properly.

Care and maintenance

WARNING Before doing any work on the machine, pull the plug out of the socket. Leave the unit to cool down.



Use original replacement parts only. If the supply cord is damaged, it must be replaced by the manufacturer, its service agent or similarly qualified persons in order to avoid a hazard.

Warranty

Claims by the buyer for physical defects are time-barred after a period of seven years from delivery to the buyer. We shall only be liable for claims arising from a warranty furnished by us if the quality or durability warranty has been furnished by use in writing and using the term „Warranty“.

The warranty shall be void if damage is due to improper use and if the device has been tampered with by unauthorised persons. For more information please visit www.weller-tools.com.

Symbols

	Caution!		Before performing work of any kind on the unit, always disconnect the power plug from the socket.
	Warning! Risk of burns		Safety class II
	Read the operating instructions!		

Technical Data

Soldering station	WLSK 3012A	WLSK 6012A	WLSK 8012A
High temperature Limit °C (°C)	400°C	470°C	470°C
High temperature Limit °F (°F)	750°F	880°F	880°F
Soldering iron Power consumption (W)	30 W	60 W	80 W
Soldering station Power consumption (W)	300 W max.		
Mains supply voltage (V/Hz)	120 VAC / 60 Hz		

EN English

Read these instructions and the safety guidelines carefully before starting up the unit and starting work. Failure to observe the safety regulations results in a risk to life and limb. Keep these instructions in a place that is accessible to all users. Please adhere to the operating instructions of the connected devices. Safety information

Safety information
Read all safety warnings and all instructions. Failure to follow the warnings and instructions may result in electric shock, fire and/or serious injury. Save all warnings and instructions for future reference. Keep your work area clean and tidy. Untidy workplaces and workbenches increase the risk of accidents and injuries. This appliance is not intended for use by persons (including children) with reduced physical, sensory or mental capabilities, or lack of experience and knowledge, unless they have been given supervision or instruction concerning use of the appliance by a person responsible for their safety. Children should be supervised to ensure that they do not play with the appliance.

The device and packaging are not toys. Comply with the local injury prevention regulations and safety regulations in the work area. **Keep other persons well away from your workplace.** The work area is out of bounds for children and unauthorised persons. Never allow other persons to touch the soldering tool or cable.

Specified Conditions Of Use

Use the soldering station only for the purpose of soldering, as specified in the Operating Instructions. This device may only be used at room temperature and indoors. Protect against moisture and direct sunlight.

WARNING Electrical shock
Connecting the control unit incorrectly poses a risk of injury due to electric shock and can damage the device.

USA
Apex Tool Group
1000 Lutkin Road
Apex, NC 27539
CustomerCare@ApexToolGroup.com
Tel +1 (833) 3170763
Fax +1 (800) 548-7312

APEX TOOL GROUP
Grants the
Present Guarantee Policy

This policy will NOT be effective in the following cases:
A) When the product has been used under conditions other than normal.
B) When the product has not been operated in accordance with the accompanying instructions for use.
C) When the product has been altered or repaired by persons not authorized by the respective responsible national manufacturer, importer or marketer.

Name: _____
Address: _____
Tel: _____
Purchase Date Address: _____
Model and Brand: _____
Authorized Dealer: _____

Authorized Distributor Stamp

Thank you for purchasing an Apex tool group product. This item has been manufactured with the highest quality materials and under strict production control.

This policy guarantees against manufacturing defects of the indicated product with its components, labor and services necessary for its correct operation and at no additional cost to the customer, for a period of 7 years after the date of purchase.

Procedure to make the guarantee effective.

This policy will be effective by presenting the product and this document duly sealed in the establishment where it was acquired to Apex Tool Group with address shown above.

At this address you can get parts, consumable components and accessories. Within the warranty period the company will repair, change the product or refund the amount paid, if the product actually presents defects contemplated in the conditions of this warranty.

