

- 1
- 2
- 3
- 4
- 5
- 6
- 7
- 8
- 9
- 10
- 11
- 12
- 13
- 14
- 15
- 16
- 17
- 18

**MATERIAL**

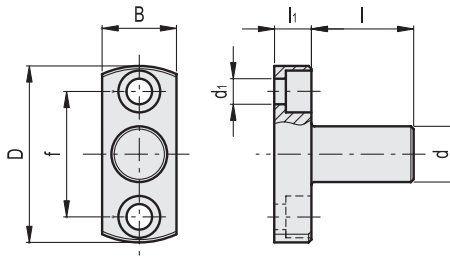
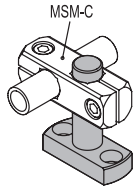
Zinc-plated steel.

**FEATURES AND APPLICATIONS**

MSM-P flanged bolts are used for matching with connecting clamps, with the function of levelling element or holding flange.

**KEY TO TABLE DIMENSIONS**

d1= holes for clamping screws with threading as indicated in the table.  
f = fixing holes centre distance: it allows matching and fixing to magnetic bases MSM-RM (see page 915).



Conversion Table	
1 mm = 0.039 inch	
d	
mm	inch
8	0.31
10	0.39
12	0.47
15	0.59
16	0.63
20	0.79

**METRIC**

Code	Description	d	d1	D	B	l	l1	f	△△
500401	MSM-P-8-18	8	M4	31.5	14	18	6	22	23
500403	MSM-P-8-32	8	M4	31.5	14	32	6	22	40
500405	MSM-P-10-21	10	M5	38	16	21	8	27	43
500407	MSM-P-10-37	10	M5	38	16	37	8	27	52
500409	MSM-P-12-22	12	M5	38	16	22	8	27	49
500411	MSM-P-12-39	12	M5	38	16	39	8	27	64
500413	MSM-P-15-27.5	15	M6	45	20	27.5	10	32	94
500415	MSM-P-15-47.5	15	M6	45	20	47.5	10	32	122
500417	MSM-P-16-28	16	M6	45	20	28	10	32	100
500419	MSM-P-16-49	16	M6	45	20	49	10	32	133
500421	MSM-P-20-35	20	M6	50	25	35	10	36	166
500423	MSM-P-20-60	20	M6	50	25	60	10	36	228

Levelling feet and supports