

# SPLICER SCISSORS & KNIVES

## TELECOMMUNICATION, ELECTRONIC AND ELECTRICAL WIRING JOBS



Manufactured for exceptional performance, Jameson splicer scissors are heat treated then ice tempered (cryogenically processed) for a longer lasting edge and precision ground for consistent quality.

### Snip Grip® Ergonomic Handle

- Increases cutting leverage while reducing hand and wrist fatigue
- Fits any manufacturer's standard 5" electrical scissors
- Sold separately or with Jameson scissors

### Splicer Skinning Knife

Straight style blade is molded into an easy-grip polymer handle that remains pliable in sub-zero temperatures.

- Blade is heat treated then ice tempered for a long lasting edge
- 20-25% thicker than comparable models.



### SCISSORS

Notched, serrated blade for removing wire jackets

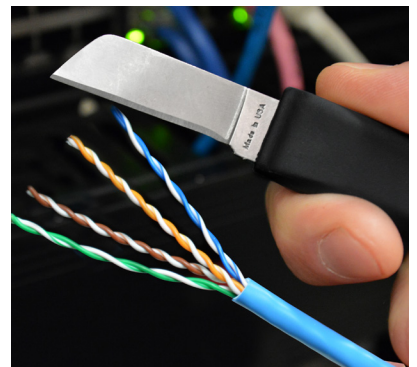
PART NUMBER	DESCRIPTION
32-21NS	Splicer Snip, Notched & Serrated



### SCISSORS WITH SNIP GRIP

Ergonomic handle increases cutting leverage, reduces hand and wrist fatigue

PART NUMBER	DESCRIPTION
32-40	Snip Grip® Ergonomic Handle
32-41NS	5-1/4 in. Electrician Scissors with Snip Grip®



### SKINNING KNIFE

Straight blade Ergonomic handle for easier grip

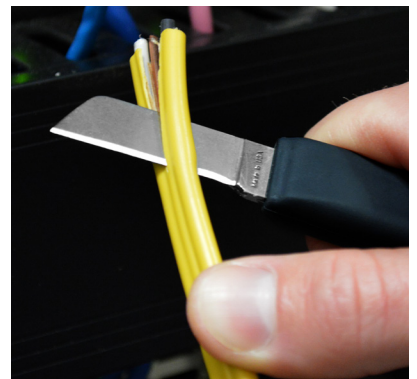
PART NUMBER	DESCRIPTION
32-24E	Cable Splicers Knife, 6-1/4" with 1-1/2" blade, Ergonomic Handle



### SKINNING KNIFE

Straight blade

PART NUMBER	DESCRIPTION
32-24J	Knife with Straight Handle



# SPLICER KITS

Jameson leather and PVC belt pouches keep splicing tools close at hand.

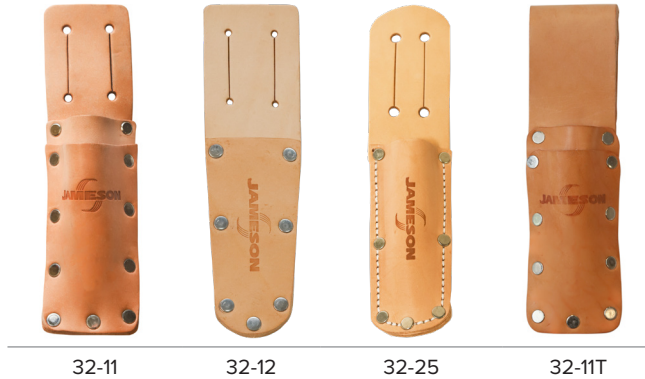
Leather pouches are reinforced with steel rivets for durability. Available with slotted openings or tunnel loop to slide on belt.

Black PVC pouches will not split or tear with age and remain flexible, even in cold weather.

## LEATHER TOOL POUCHES

Genuine rawhide leather with steel rivets

PART NUMBER	DESCRIPTION
32-11	Slotted Leather Pouch
32-12	Slotted Leather Pouch for Scissors
32-25	Slotted Leather Pouch For Knife
32-11T	Tunnel Loop Leather Pouch



## PVC POUCHES

Black PVC water repellent and UV resistant

PART NUMBER	DESCRIPTION
32-15T	Tunnel Loop Leather Pouch Snip Grip® Scissors, and Splicer Knife
32-16T	Black PVC Pouch for Snip Grip Scissors and knife

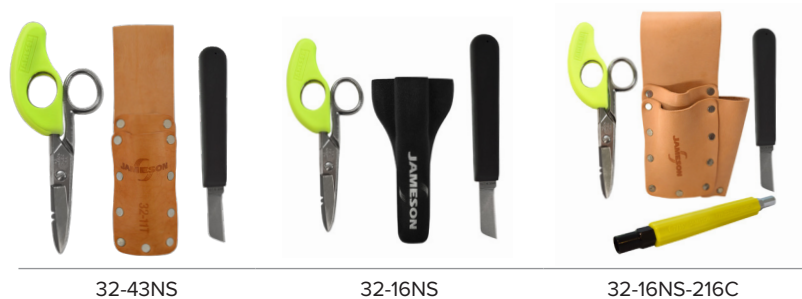


32-30	Adjustable Belt for Tool Pouches
-------	----------------------------------

## INSTALLERS KIT

Electrician and Cable Installer Kits

PART NUMBER	DESCRIPTION
32-22NS	Cable Splicer's Kit, Slotted Leather Pouch (3-Piece)
32-23NS	Cable Splicer's Kit, Slotted Leather Pouch (3-Piece)
32-42NS	Cable Splicer's Kit, Slotted Leather Pouch (3-Piece)
32-43NS	Cable Splicer's Kit, 5-1/4" with Tunnel Loop Leather Pouch
32-16NS	Cable Splicer's Kit, 6-1/4" with PVC Pouch
32-16NS-216C	4-Piece Telecommunications Cable Splicer's Kit



## BLADE SHARPENER

Scissors and Knife Sharpener



32-50