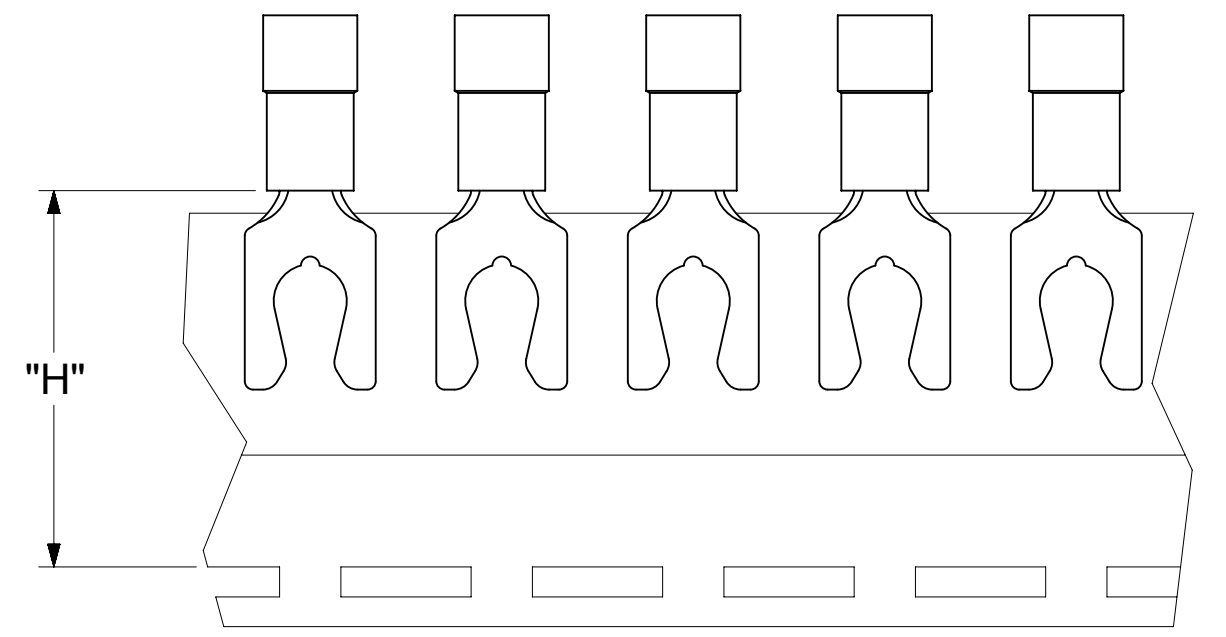
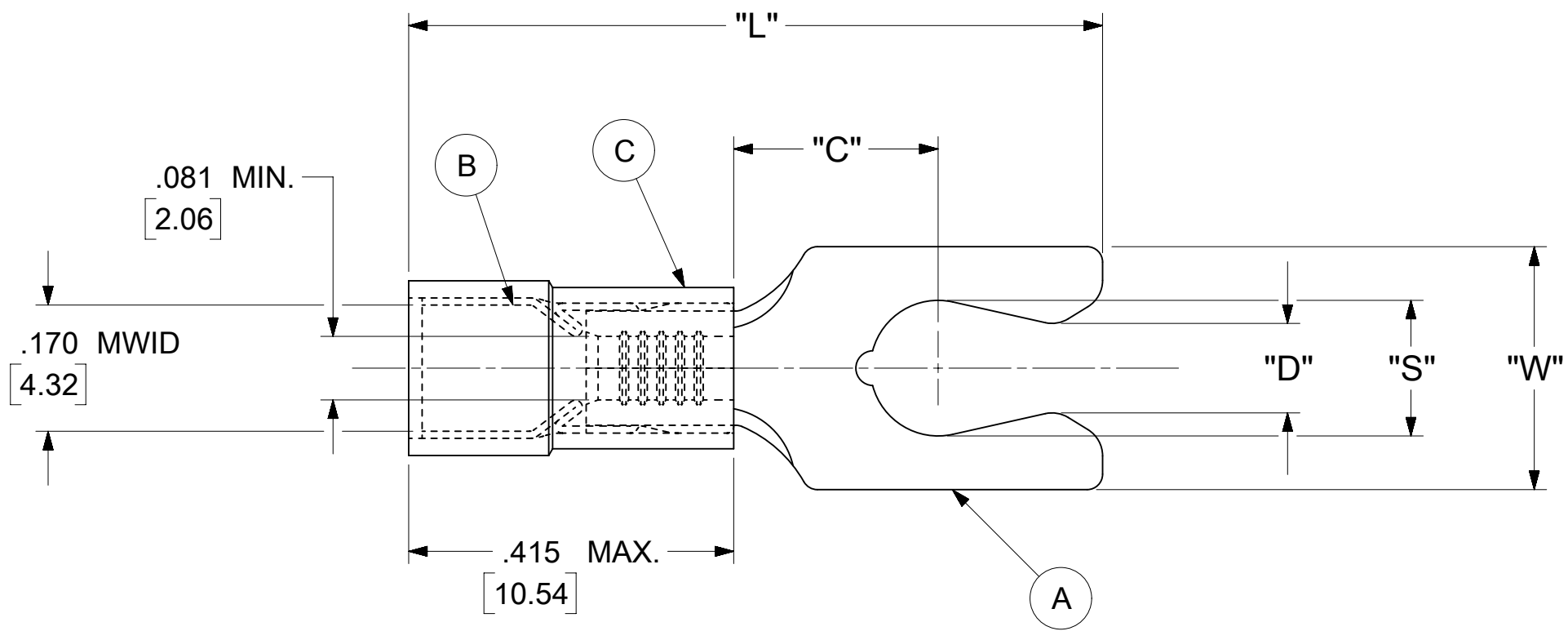


LOOSE PIECE		TAPE MOUNTED		SPECIFICATIONS							
MATERIAL NUMBER	ENGINEERING NUMBER	MATERIAL NUMBER	ENGINEERING NUMBER	STUD SIZE	"S" ±.005 [0.13]	"W" ±.010 [0.25]	"C" MIN.	"L" MAX.	"D" ±.005 [0.13]	"H"	STOCK ±.001 [0.025] THICKNESS
191150079	BB-8716-08	191150030	BB-8716-08T	8	.173 [4.39]	.310 [7.87]	.261 [6.63]	.886 [22.50]	.139 [3.53]	.980 [24.89]	.031 [0.79]
191150031	BB-8717-10	191150032	BB-8717-10T	10	.198 [5.03]	.330 [8.38]	.261 [6.63]	.934 [23.72]	.156 [3.96]	.980 [24.89]	.031 [0.79]



PARTS ON TAPE

- NOTES:**
- MATERIAL:**
 - (A). RING TONGUE TERMINAL: COPPER
PLATING: ELECTRO-TIN (.0003 MIN.)
 - (B). TIN-PLATED BRASS FUNNEL FERRULE
 - (C). INSULATION: NYLON (BLUE)
 - MWID: MAXIMUM WIRE INSULATION DIAMETER
 - WIRE SIZE: 16 -14 AWG
1.0 -2.5 MM²
 - "UL" LISTING #E32244
"CSA" LISTING #18689
 - ALL DIMENSIONS IN INCHES/[MM].
 - PARTS ARE ROHS COMPLIANT.
 - DIMS. SHOWN ARE FOR REFERENCE ONLY.

SYMBOLS ∇ = 0 ∇ = 0 ∇ = 0 ∇ = 0 ∇ = 0 ∇ = 0 ∇ = 0 ∇ = 0 ∇ = 0 ∇ = 0	THIS DRAWING CONTAINS INFORMATION THAT IS PROPRIETARY TO MOLEX ELECTRONIC TECHNOLOGIES, LLC AND SHOULD NOT BE USED WITHOUT WRITTEN PERMISSION											
	DIMENSION UNITS INCH/MM		SCALE NTS		CURRENT REV DESC: MIGRATION TO ECTR/NX							
	GENERAL TOLERANCES (UNLESS SPECIFIED)				EC NO: 619818		DRWN: ABENJAMINLW 2019/06/20		TONGUE TERMINAL AVIKRIMP - 300 SERIES PRODUCT CUSTOMER DRAWING			
	4 PLACES ±		±		DRWN: GROJAS01 2019/06/27		SERIES 1985/04/05					
3 PLACES ±		± 0.005		APPR: JMACNEIL 2019/07/10		SERIES 2019/07/10						
2 PLACES ±		± 0.13 ± 0.01		INITIAL REVISION:		DRWN: GZ 1985/04/05		DOCUMENT NUMBER	DOC TYPE	DOC PART	REVISION	
1 PLACE ±		± 0.25 ±		APPR: JMACNEIL 2019/07/10		SERIES 19115		191150079	PSD	000	A	
0 PLACES ±		±		ANGULAR TOL ± 0.5 °		THIRD ANGLE PROJECTION		MATERIAL NUMBER		CUSTOMER		SHEET NUMBER
DRAFT WHERE APPLICABLE MUST REMAIN WITHIN DIMENSIONS				DRAWING		C-SIZE		SEE TABLE	GENERAL MARKET		1 OF 1	