
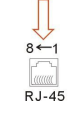


IFD6500 IFD6530

Instruction Sheet Bilgi Dökümanı 安裝說明 安裝说明

USB/RS-485 Communication Interface
USB/RS-485 Haberleşme Arayuz
USB/RS-485 通訊轉換模組
USB/RS-485 通讯转换模块



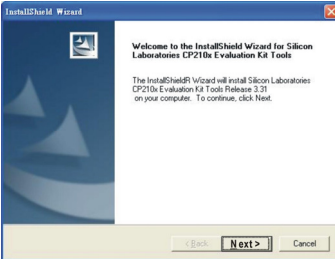
Compatibility	Full compliance with USB V2.0 specification			
Max. cable length	RS-485 Communication Port: 100 m			
Support RS-485 half-duplex transmission				
RJ-45  	IFD6500		IFD6530	
	PIN	Description	PIN	Description
	1	Reserved	1	Reserved
	2	Reserved	2	Reserved
	3	Reserved	3	GND
	4	SG+	4	SG-
	5	SG-	5	SG+
	6	Reserved	6	GND
	7	Reserved	7	Reserved
8	Reserved	8	+9V	

Preparations before Driver Installation

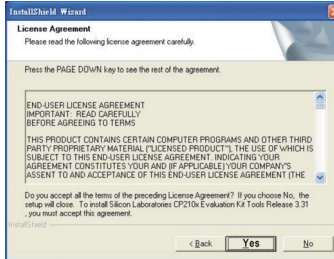
Please extract the driver file by following steps. You could find driver file in the CD supplied with IFD6500/IFD6530.

Note: DO NOT connect IFD6500/IFD6530 to PC before extracting the driver file.

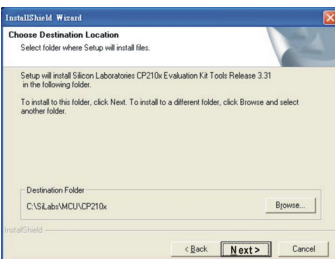
STEP 1



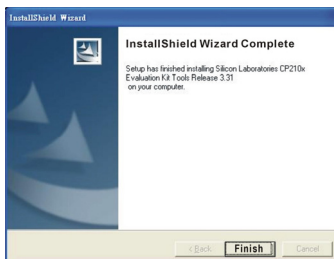
STEP 2



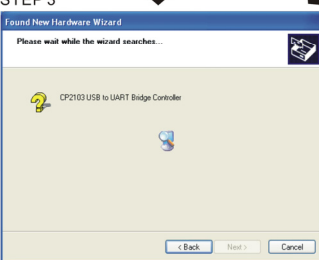
STEP 3




STEP 4



STEP 3



STEP 4



STEP 5
Repeat Step 1 to Step 4 to complete COM PORT setting.

LED Display

- Steady Green LED ON: power is ON.
- Blinking orange LED: data is transmitting.

RJ-45

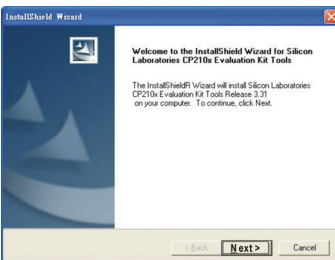
	IFD6500		IFD6530	
	PIN	說明	PIN	說明
1	保留	1	保留	
2	保留	2	保留	
3	保留	3	GND	
4	SG+	4	SG-	
5	SG-	5	SG+	
6	保留	6	GND	
7	保留	7	保留	
8	保留	8	+9V	

安裝驅動程式前準備工作

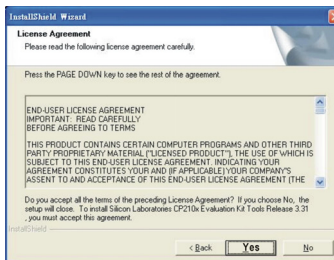
請將隨機所附 CD 內的 USB driver 驅動程式檔依下列步驟解壓縮。

註：在解壓縮檔案前，請勿將 IFD6500/IFD6530 插入電腦。

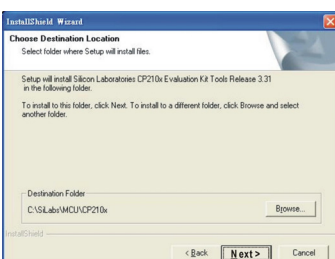
STEP 1



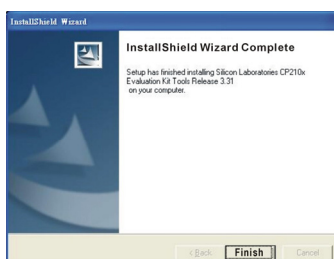
STEP 2



STEP 3



STEP 4



Warning

EN IFD6500/IFD6530 is an OPEN-TYPE device. It should be installed in a control cabinet free of airborne dust, humidity, electric shock and vibration. To prevent non-maintenance staff from operating IFD6500/IFD6530, or to prevent an accident from damaging IFD6500/IFD6530, the control cabinet in which IFD6500/IFD6530 is installed should be equipped with a safeguard. For example, the control cabinet in which IFD6500/IFD6530 is installed can be unlocked with a special tool or key.

EN DO NOT connect AC power to any of I/O terminals, otherwise serious damage may occur. Please check all wiring again before IFD6500/IFD6530 is powered up. After IFD6500/IFD6530 is disconnected, Do NOT touch any terminals in a minute. Make sure that the ground terminal on IFD6500/IFD6530 is correctly grounded in order to prevent electromagnetic interference.

FR IFD6500/IFD6530 est un module OUVERT. Il doit être installé que dans une enceinte protectrice (boîtier, armoire, etc.) saine, dépourvue de poussière, d'humidité, de vibrations et hors d'atteinte des chocs électriques. La protection doit éviter que les personnes non habilitées à la maintenance puissent accéder à l'appareil (par exemple, une clé ou un outil doivent être nécessaires pour ouvrir la protection).

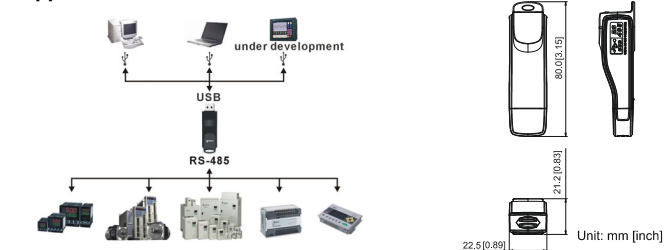
FR Ne pas appliquer la tension secteur sur les bornes d'entrées/Sorties, ou l'appareil IFD6500/IFD6530 pourra être endommagé. Merci de vérifier encore une fois le câblage avant la mise sous tension du IFD6500/IFD6530. Lors de la déconnexion de l'appareil, ne pas toucher les connecteurs dans la minute suivante. Vérifier que la terre est bien reliée au connecteur de terre afin d'éviter toute interférence électromagnétique.

Introduction

IFD6500/IFD6530 is a convenient RS-485-to-USB converter, which does not require external power-supply or complex setting process. It supports baud rate from 75 to 115.2kbps and auto switching direction of data transmission. In addition, it adopts RJ-45 in RS-485 connector for users to wire conveniently. And its tiny dimension, handy use of plug-and-play and hot-swap provide more conveniences for connecting all DELTA IABU products to your PC. Applicable Models: All DELTA IABU products.

- Please thoroughly read this instruction sheet before installation and putting it into use.
- The content of this instruction sheet and the driver file may be revised without prior notice. Please consult our distributors or download the most updated instruction/driver version at <http://www.deltaww.com>

Application & Dimension



Specifications

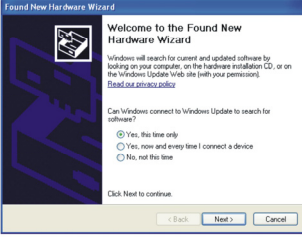
Power supply	No external power is needed
Power consumption	IFD6500: 0.4W ; IFD6530: 1.5W
Isolated voltage	2,500VDC
Baud rate	75, 150, 300, 600, 1,200, 2,400, 4,800, 9,600, 19,200, 38,400, 57,600, 115,200 bps
RS-485 connector	RJ-45
USB connector	A type (plug)

STEP 5
You should have a folder marked SiLabs under drive C.

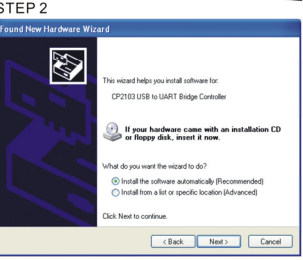
Driver Installation

After connecting IFD6500/IFD6530 to PC, please install driver by following steps.

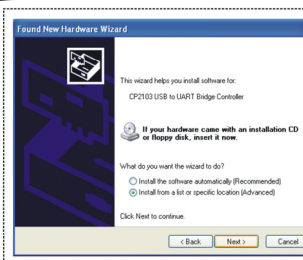
STEP 1



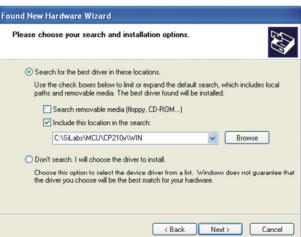
STEP 2



OR



STEP 3



Browse and select directory, or enter C:\SiLabs\MCU\CP210x\WIN

注意事項

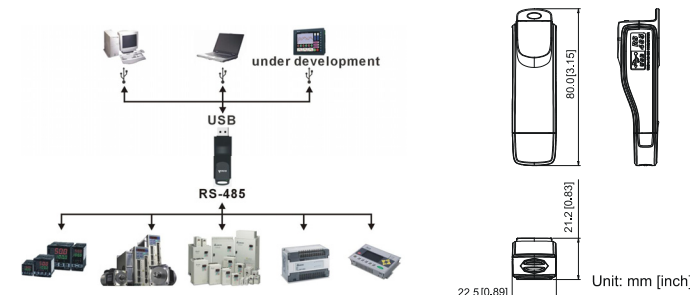
- 請詳細閱讀下列說明後才使用本產品，以確保使用安全。
- 由於產品精益求精，當內容規格或驅動程式有所修正時，請洽詢代理商或至台灣網站 (<http://www.deltaww.com>) 下載最新版本。

產品簡介

IFD6500/IFD6530 RS-485/USB 轉換裝置，不需外接電源，不需任何設定，即可支援不同的傳輸速率從 75 到 115.2 kbps，並可自動切換資料流方向。通過 USB 接口有隨插即用和熱插拔的方便性，提供和 RS-485 裝置的溝通介面，體積小且方便使用，RS-485 採用 RJ-45 網路線接口，使用者能更便利的接線。

適用機種：台達電子 IABU 全系列產品。

產品應用及外觀尺寸



功能規格

電源需求	不需外接電源
消耗功率	IFD6500 : 0.4W ; IFD6530 : 1.5W
隔離電壓	2,500VDC
傳輸速度	75、150、300、600、1,200、2,400、4,800、9,600、19,200、38,400、57,600、115,200 bps
RS-485 端子形式	RJ-45
USB 接頭	A type (plug)
相容性	符合 USB V2.0 規格
最大使用線長	RS-485 通訊埠：100 公尺
支援 RS-485 半雙工	

STEP 5
完成後，IFD6500/IFD6530 驅動程式將會被放置於 c:\SiLabs

安裝驅動程式

請將 IFD6500/IFD6530 連接至電腦 USB 埠，完成後，請依以下步驟安裝。

STEP 1



STEP 2



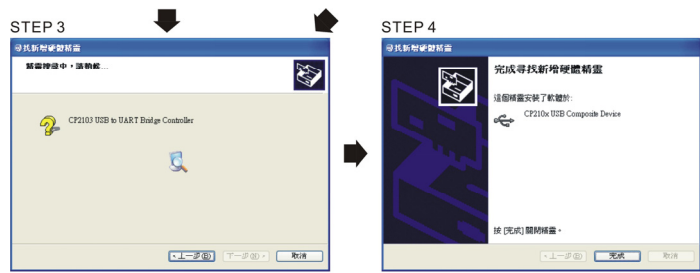
OR



STEP 3



請瀏覽選擇目錄，或直接輸入 C:\SiLabs\MCU\CP210x\WIN



STEP 5
重复以上 Step 1至 Step 4 以完成 COM PORT 設定

6 LED 顯示

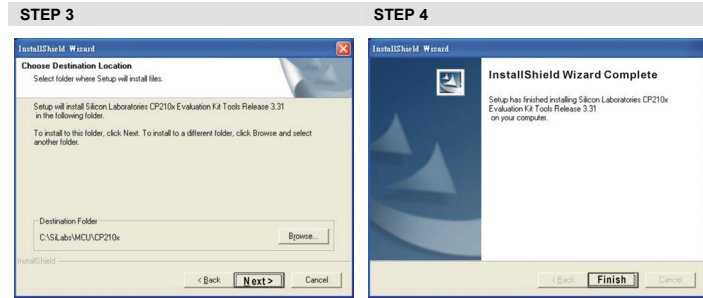
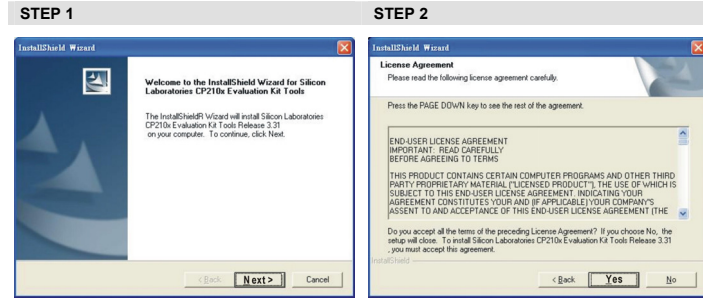
1. 綠色 LED 亮起，表示有電源。
2. 橘色 LED“閃爍”，表示資料傳輸。

■ RJ-45

	IFD6500		IFD6530	
	PIN	說明	PIN	說明
	1	保留	1	保留
	2	保留	2	保留
	3	保留	3	GND
	4	SG+	4	SG-
	5	SG-	5	SG+
	6	保留	6	GND
	7	保留	7	保留
	8	保留	8	+9V

3 安裝驱动程序前准备工作

请将随机所附 CD 内的 USB driver 驱动程序档依下列步骤解压缩。
注：在解压缩档案前，请勿将 IFD6500/IFD6530 插入计算机。

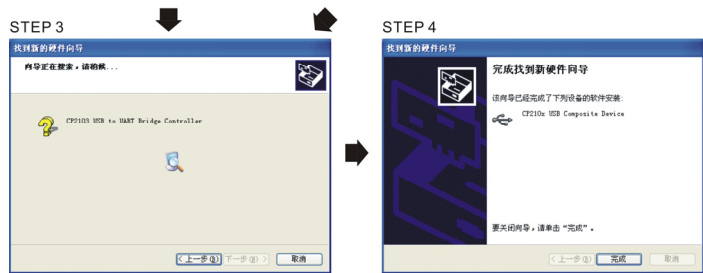


STEP 5

完成后，IFD6500/IFD6530 驱动程序将会被放置于 c:\SILabs

4 安裝驱动程序

请将 IFD6500/IFD6530 连接至電腦 USB 埠，完成后，请依以下步骤安裝。



STEP 5
重复以上 Step1至Step4以完成COM PORT设置

5 LED 显示

1. 綠色 LED 亮起，表示有電源。
2. 橘色 LED“閃爍”，表示数据传输。

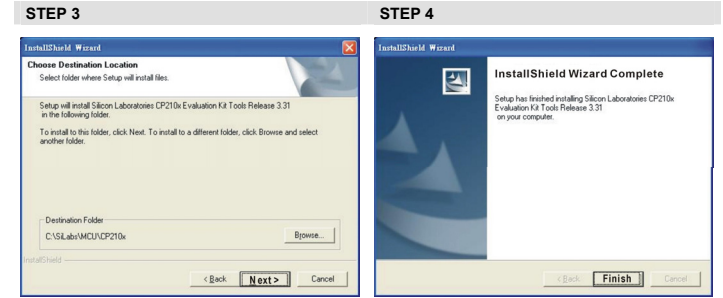
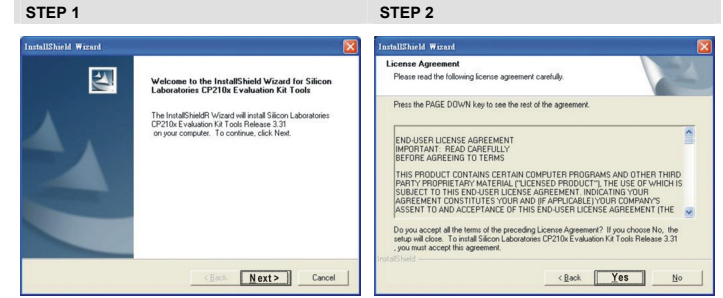
■ RJ-45

	IFD6500		IFD6530	
	PIN	Sinyal Adı	PIN	Sinyal Adı
	1	Rezerve	1	Rezerve
	2	Rezerve	2	Rezerve
	3	Rezerve	3	GND
	4	SG+	4	SG-
	5	SG-	5	SG+
	6	Rezerve	6	GND
	7	Rezerve	7	Rezerve
	8	Rezerve	8	+9V

3 Driver Kurulumundan Önce Hazırlık

Lütfen driver dosyasını basamakları takip ederek kurunuz.Driver dosyasını IFD6500/IFD6530'yi destekleyen CD'nin içinde bulabilirsiniz.

Note: Sürücü dosyalarını tamamlamadan önce IFD6500/IFD6530'yi PC'ye bağlamayınız.



STEP 5

You should have a folder marked SILabs under drive C.

4 Driver Kurulumu

IFD6500/IFD6530'yi PC'ye bağladıktan sonra, lütfen basamakları takip ederek driver'ı kurunuz. Lütfen İngilizce versiyonu için sayfa 4-5'e bakınız.

5 LED Gösterimi

1. Yeşil sürekli ise LED ON: güç "ON" dur.
2. Turuncu yanıp-sönüyorsa LED: data iletiliyor.

注意事

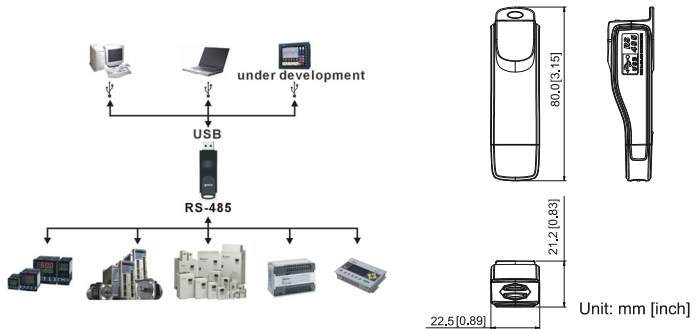
- ✓ 请详细阅读下列说明后才使用本产品，以确保使用安全。
- ✓ 由于产品精益求精，当内容规格或驱动程序有所修正时，请洽询代理商或至台达网站 (<http://www.deltavw.com>) 下载最新版本。

1 产品简介

IFD6500/IFD6530 RS-485/USB 转换装置，不需外接电源，不需任何设定，即可支持不同的传输速率从 75 到 115.2 kbps，并可自动切换数据流方向。通过 USB 接口有随插即用和热插拔的方便性，提供和 RS-485 装置的沟通接口，体积小且方便使用，RS-485 采用 RJ-45 网络线接口，使用者能更便利的接线。

适用机种：台达电子 IABU 全系列产品

■ 产品应用及外观尺寸



2 功能规格

电源需求	不需外接电源
消耗功率	IFD6500 : 0.4W ; IFD6530 : 1.5W
隔离电压	2,500VDC
传输速度	支援 75, 150, 300, 600, 1,200, 2,400, 4,800, 9,600, 19,200, 38,400, 57,600, 115,200 bps
RS-485 端子形式	RJ-45
USB 接头	A type (plug)
兼容性	符合 USB V2.0 规格
最大使用线长	RS-485 通讯端口: 100 公尺
支援 RS-485 半双工	

Warning

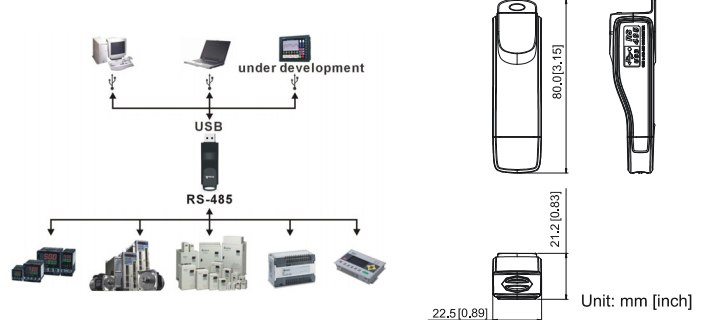
- ✓ Lütfen ürünü kullanmadan önce bu bilgi dokümanını tamamen okuyunuz.
- ✓ Bu bilgi dokümanının içeriği herhangi bir ihbara gerek kalmadan güncellenebilir. Son güncellenmiş halini almak için teknik servisimize bağlantıya geçin veya <http://www.deltavw.com> internet adresinden indiriniz.

1 Önsöz

IFD6500/IFD6530 kullanışlı RS485-USB çevirici olup, harici güç kaynağı kullanılmamasına ve herhangi özel bir ayar yapılmasına ihtiyaç duymaz. 75-115.2kbps geniş baud hızlarını destekler, otomatik data yönü değişimi sağlar. Bununla beraber RJ-45 konnektörü sayesinde kullanıcıya kolay RS-485 bağlantısı sağlar. Küçük boyutu, plug&play ve hot swap özelliği ile PC'den DELTA IABU ürünlerine kolayca bağlanabilir

Uygulanabilen modeller: Tüm DELTA ürünleri.

■ Uygulama & Ölçüler



2 Özellikler

Power Gereksinimi	Harici güç kaynağına ihtiyaç yok
Güç Tüketimi	IFD6500: 0.4W ; IFD6530: 1.5W
İzolasyon Voltajı	2,500VDC
Baud Hızı	75, 150, 300, 600, 1200, 2400, 4800, 9600, 19200, 38400, 57600, 115200bps destekler
RS-485 Konnektör	RJ-45
USB Konnektör	A tipi (plug)
Uyumluluk	USB V2.0 özelliklerine tamamen uyumlu
Maks. Kablo Uzunluğu	RS-485 Communication Port: 100 m
RS-485 Half-Duplex İletişimi destekler	

<p>TÜRKİYE İTHALATÇI FİRMA FABRİKA AĞIĞILARI SİSTEM TEKNOLOJİSİ BİLGİSAYAR YAZILIM VE ELEKTRONİK PAZARLAMA İTHALAT İHRACAT ANONİM ŞİRKETİ FAST Plaza Küçükbakkalköy Mh. Dereyolu Sk. No:4 ATAŞEHİR / İSTANBUL T: +(90) 216 574 94 34 F: +(90) 216 574 16 60 E: satis@fastitd.net W: www.fastitd.net</p>	<p>Üretici Firma Delta Electronics, Inc. Taiwan 31-1 Xingbang Road, Guishan Industrial Zone, Taoyuan County 33370, Taiwan TEL: 886-3-362-6301 FAX: 886-3-362-7287</p>	<p>China 1688 Jiangping East Road, Wujiang Economic Development Zone Wujiang City, Jiang Su Province, People's Republic of China (Post code: 215200) TEL: 86-512-6340-3008 FAX: 86-769-4340-7290</p>
--	---	--