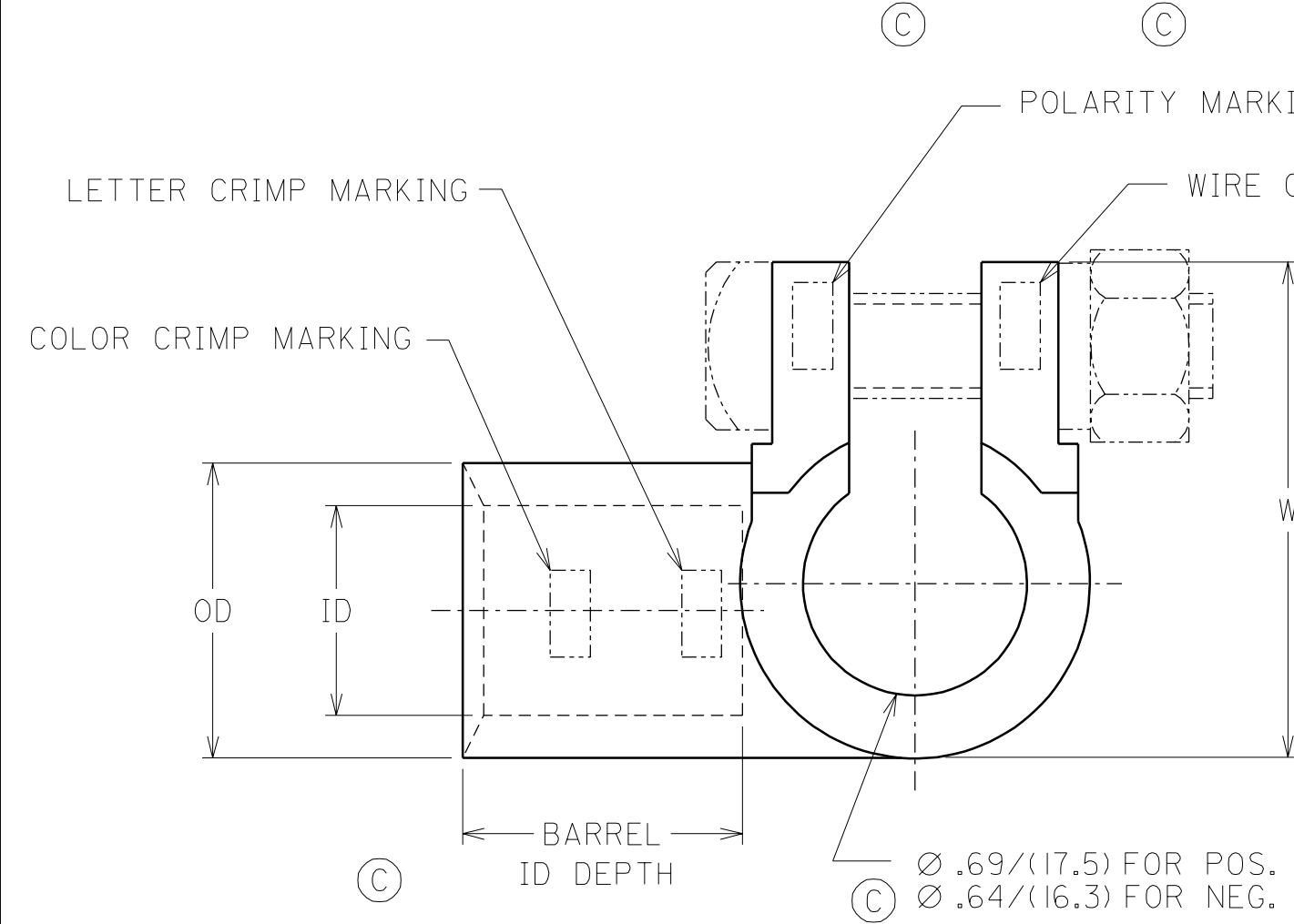


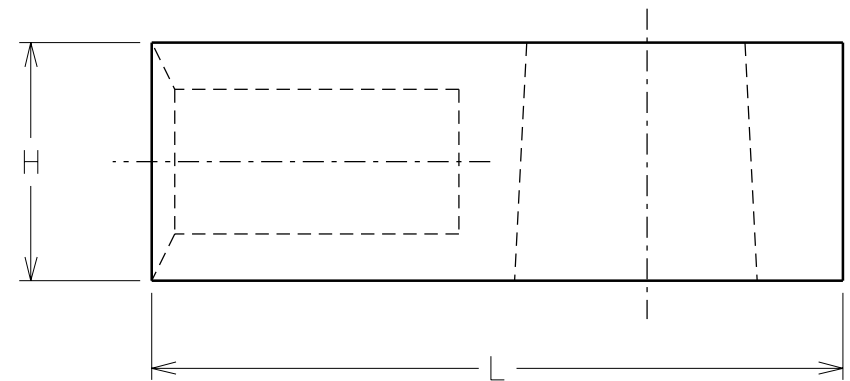
MATERIAL NUMBER NEGATIVE	MATERIAL NUMBER POSITIVE	WIRE GAUGE MARKING	COLOR CRIMP MARKING	BARREL ID	BARREL OD	BARREL ID DEPTH	L +.060, -.010 (+1.52, -0.25)	H	W
192180049	192180050	2	GREEN	.34/(8.6)	.55/(14.0)	1.16/(29.5)	2.07/(52.6)	.65/(16.5)	1.40/(35.6)
192180047	192180048	1	PINK	.39/(9.9)	.55/(14.0)	1.16/(29.5)	2.07/(52.6)	.65/(16.5)	1.40/(35.6)
192180051	192180052	1/0	BLACK	.47/(11.9)	.65/(16.5)	1.16/(29.5)	2.07/(52.6)	.65/(16.5)	1.50/(38.1)
192180053	192180054	2/0	ORANGE	.50/(12.7)	.65/(16.5)	1.16/(29.5)	2.07/(52.6)	.65/(16.5)	1.50/(38.1)
192180055	192180056	3/0	PURPLE	.53/(13.5)	.65/(16.5)	1.16/(29.5)	2.07/(52.6)	.65/(16.5)	1.50/(38.1)
192180057	192180058	4/0	YELLOW	.60/(15.2)	.830/(21.1)	1.07/(27.2)	2.07/(52.6)	.71/(18.0)	1.59/(40.4)
192180059	192180060	6/0	YELLOW	.67/(17.0)	.830/(21.1)	1.07/(27.2)	2.07/(52.6)	.71/(18.0)	1.59/(40.4)



NOTES:
 1. MATERIAL: DIE CAST COPPER.
 2. FINISH: TIN PLATED.
 3. INCLUDES 5/16 BOLT & SHOULDER NUT.

Ø .69/(17.5) FOR POS.
 Ø .64/(16.3) FOR NEG.

SALES DRAWING



FLIPPED BOLT
 EC NO. ETC2002-0324
 DRWN: BRE 02/05/20
 CHK: HEB 02/05/20
 APPR: RWD 02/05/20

QUALITY SYMBOLS
 MAJOR $\nabla=0$
 CRITICAL $\nabla=0$

GENERAL TOLERANCES: (UNLESS SPECIFIED)		SCALE NO: NE	DESIGN UNITS <input type="checkbox"/> mm <input checked="" type="checkbox"/> INCH
4 PLACES	±0. ±.	DRAWN BY & DATE DAY 99/03/12	THIRD ANGLE PROJECTION
3 PLACES	±0. ±.015	CHECKED BY & DATE RWD 99/03/12	
2 PLACES	±0.38 ±.03	APPROVED BY & DATE RWD 99/03/12	MATERIAL NO. SEE CHART DRAWING NO. SD-19218-005 SHEET NO. 1 OF 1
1 PLACE	±0.76 ±.	CAD FILENAME SD-19218-005.DGN	

ANGULAR: ±1/2°
 DRAFT WHERE APPLICABLE MUST REMAIN WITHIN DIMENSIONS
 THIS DRAWING CONTAINS INFORMATION THAT IS PROPRIETARY TO MOLEX INCORPORATED AND SHOULD NOT BE USED WITHOUT WRITTEN PERMISSION.

DIMENSIONS: <input type="checkbox"/> mm <input checked="" type="checkbox"/> INCH <input type="checkbox"/> mm ONLY		SHT	REV
TITLE: DIE CAST COPPER BATTERY TERMINAL LEFT ELBOW			
MOLEX INCORPORATED			
MATERIAL NO. SEE CHART		DRAWING NO. SD-19218-005	SHEET NO. 1 OF 1
			SIZE B