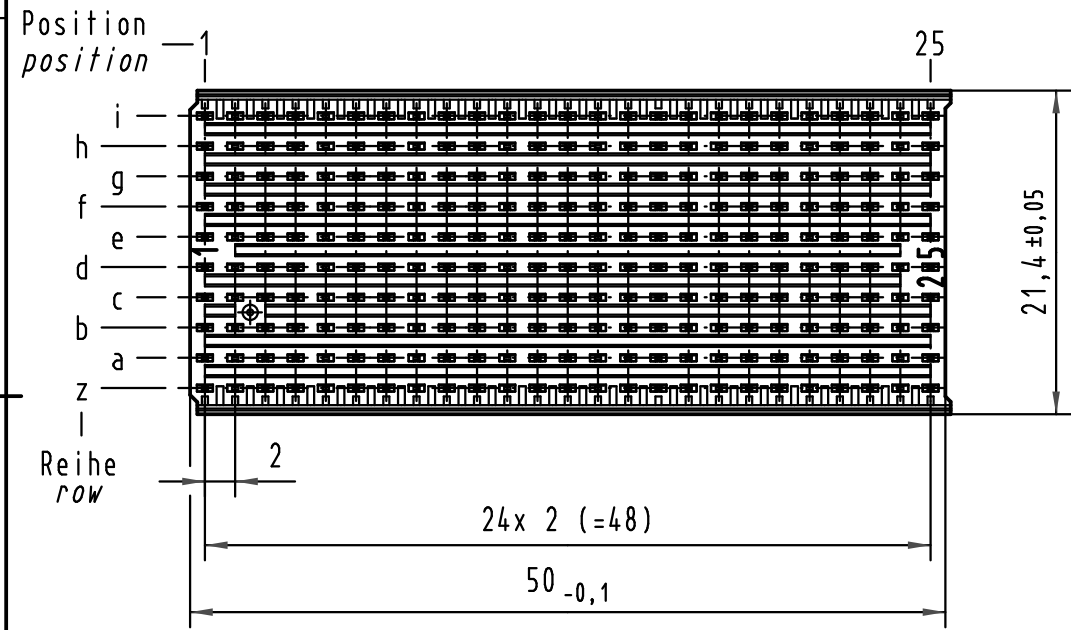
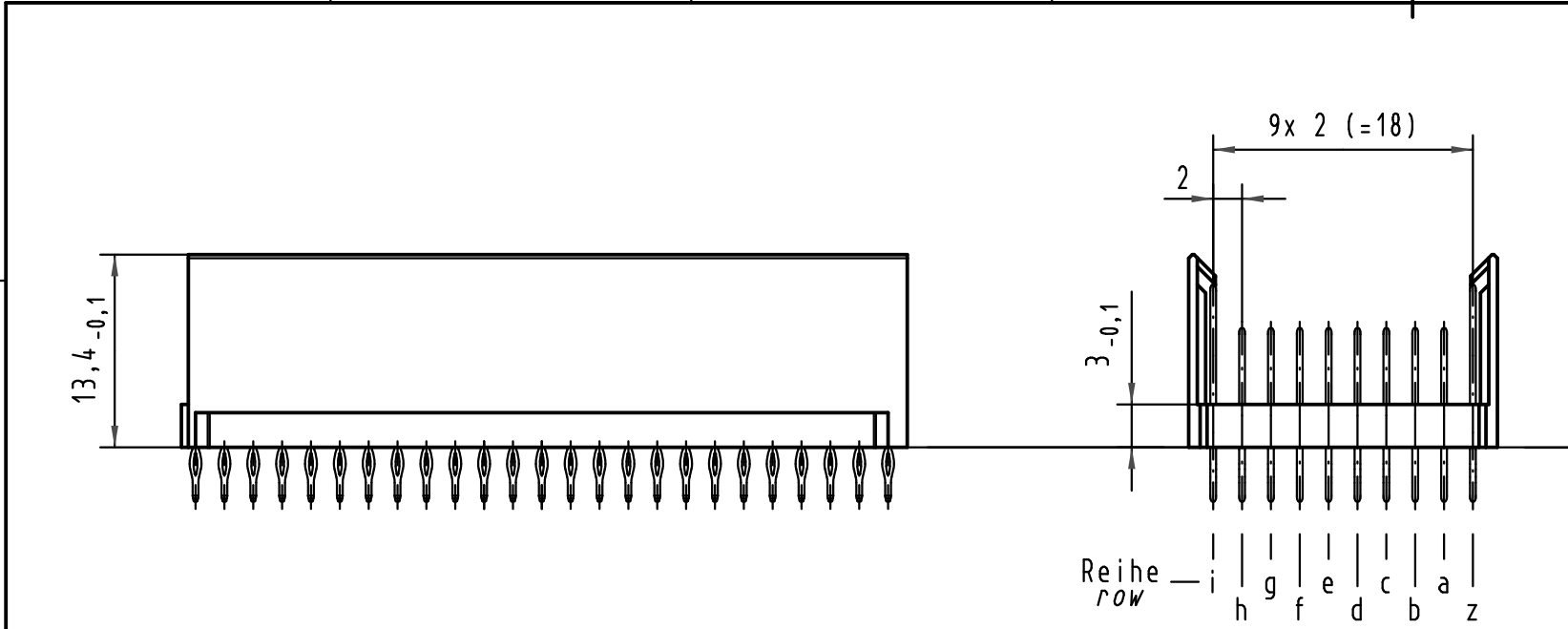
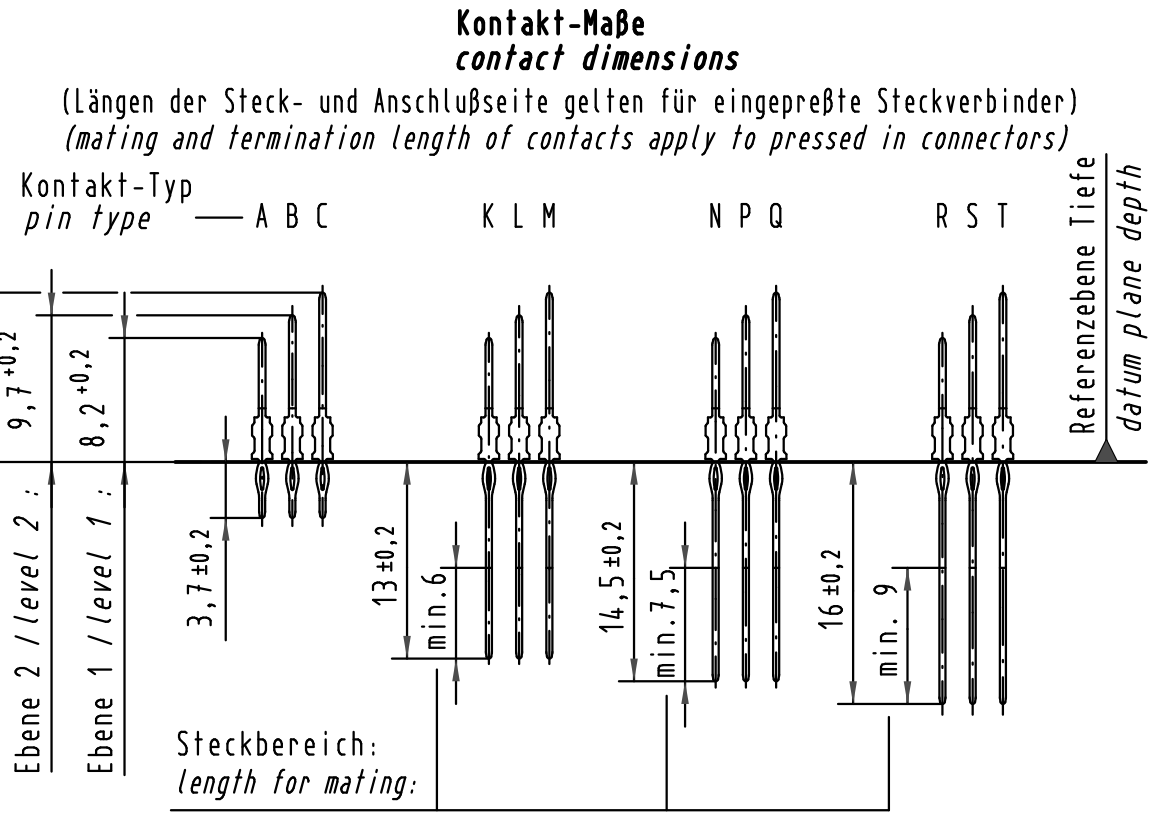
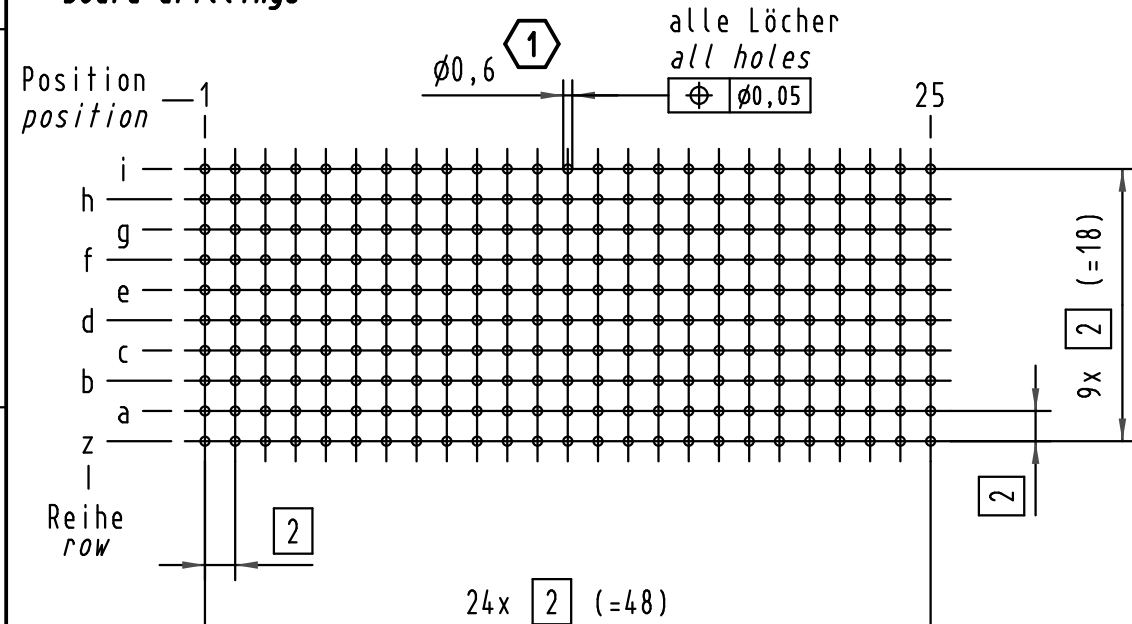


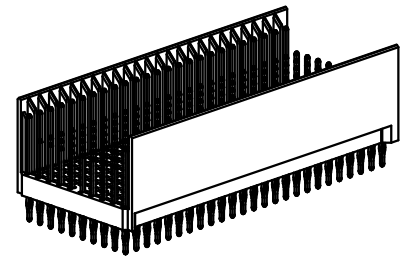
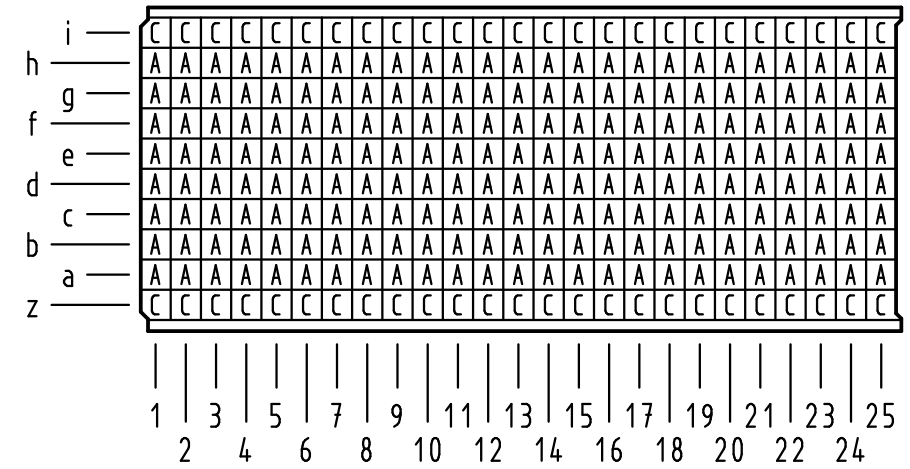
Alle Rechte vorbehalten/ All rights reserved



**Lochbild
board drillings**



**Kontaktbelegung
contact loading**



①

Empfohlener Lochaufbau und
weitere Informationen siehe: DS 17 00 110 0101
recommended configuration of plated through holes
and further information see: DS 17 00 110 0101

17 12 250 4201	S4
17 12 250 2201	2
17 12 250 1201	1
Bestell-Nr. part-no.	Anforderungsstufe performance level ①
Nicht tolerierte Maß/Free size tolerances IEC 61076-4-101	
har-bus HM Messerleiste Typ E 250pol., Anschlußlänge 3,7mm har-bus HM male connector type E 250pol., termination length 3,7mm	
TB 17 12 250 x201	Blatt/ page
Sub.	

All Dimensions in mm Original Size DIN A 3		Techn. Character.			Maßstab/Scale 2:1	HARTING
		Dat.	Name			
35994	01.02.10	Hage.	Detail.	03.08.98		
35560	21.08.09	Hage.	Insp.	03.08.98	Weil.	
34337	31.05.07	Cla	Stand.			
29438	27.03.01	Rie.				
24597			HARTING Electronics GmbH & Co. KG D-32339 ESPELKAMP			
Mod.	Dat.	Name				