

SINGLE LOOP FAST SWITCHER FREQUENCY

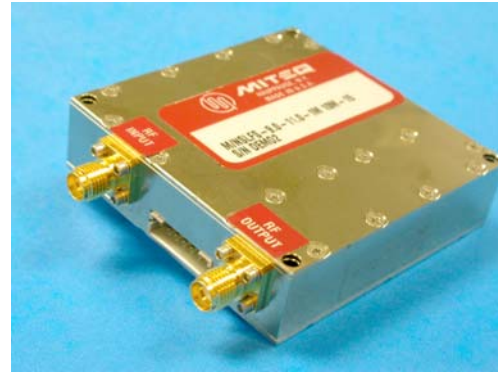
SLFS SERIES: 10 – 14 GHz (IN BANDS)

FEATURES

- 1 MHz standard step size
- Small Package size
- Low power dissipation
- INTELSAT phase noise compliant

OPTIONS

- Custom frequency bands
- Custom packaging

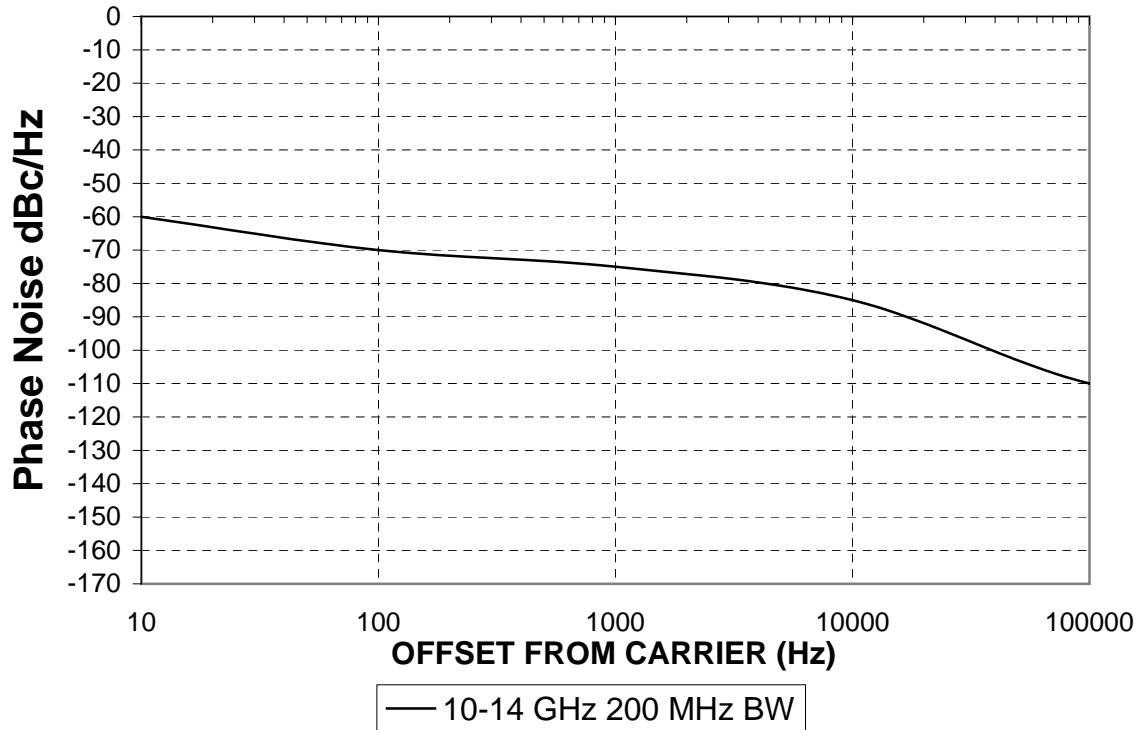


ELECTRICAL SPECIFICATIONS

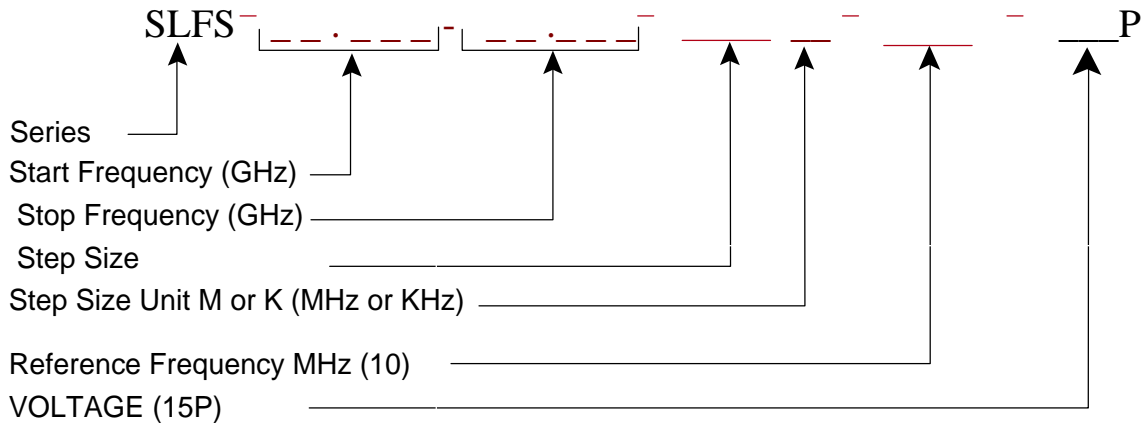
OUTPUT FREQUENCY RANGE	10 - 14GHz (200 MHz BW Typical)
OUTPUT POWER	+13 dBm Minimum
OUTPUT POWER VARIATION	+/- 2 dB
FREQUENCY STEP SIZE	1MHz
REFERENCE FREQUENCY	10MHz (internal reference available)
REFERENCE POWER	+/- 3dBm
HARMONIC	-20 dBc
SPURIOUS	-60 dBc
REGULATION	5%
NOISE AND RIPPLE	10 mV P-P maximum
PHASE ALARM	TTL High In Lock, Low Out of Lock
FREQUENCY CONTROL	Serial (3 WIRE) – 4 BIT Parallel Option
AQUISTION TIME(TIME TO PHASE LOCK)	100 mSec maximum
D.C. SUPPLY	+15 Vdc @ 350 mA
PHASE NOISE:	Typical
OFFSET	LEVEL
10Hz	-60
100Hz	-70
1KHz	-75
10KHz	-85
100KHz	-110
1MHz	-120

SINGLE LOOP FAST SWITCHER FREQUENCY SYNTHESIZER

SLFS Phase noise performance



ORDERING INFORMATION



EXAMPLE: Part Number SLFS – 10.10 – 13.00-2M-10M-15P part number for frequency synthesizer covering 10.10 – 13.00 GHz with a step size of 2 MHz and a reference frequency of 10MHz.

SINGLE LOOP FAST SWITCHER FREQUENCY SYNTHESIZER

MECHANICAL SPECIFICATIONS

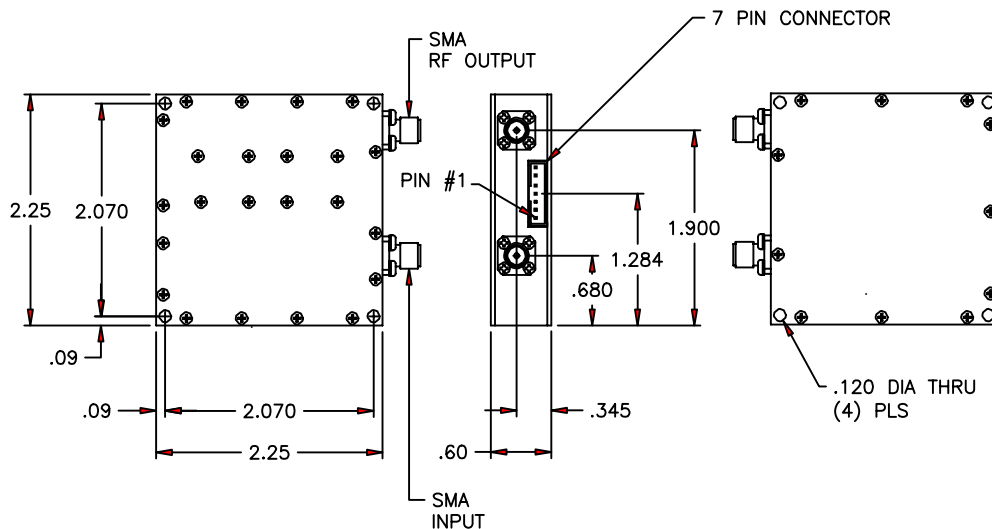
Outline drawing 172562
 RF connectors SMA female
 DC power connectors JST-7 pin header

ENVIRONMENTAL SPECIFICATIONS

Temperature
 Operating -10 to +70°C
 Storage -55 to +95°C
 Humidity Up to 95% at 40°C
 noncondensing
 Shock (nonoperating) 30 g's, 10 ms pulse
 Vibration (survival) 20 to 2000 Hz
 random to .04 G²/Hz
 Altitude Up to 13,500 feet
 100% testing Frequency range
 Output power
 Discrete power
 Spectral purity
 Phase bursts
 Alarm and 100% screening Temperature cycle/monitor

OUTLINE DRAWING

SLFS SERIES 172562



NOTE: DIMENSIONS SHOWN ARE IN MILLIMETERS.