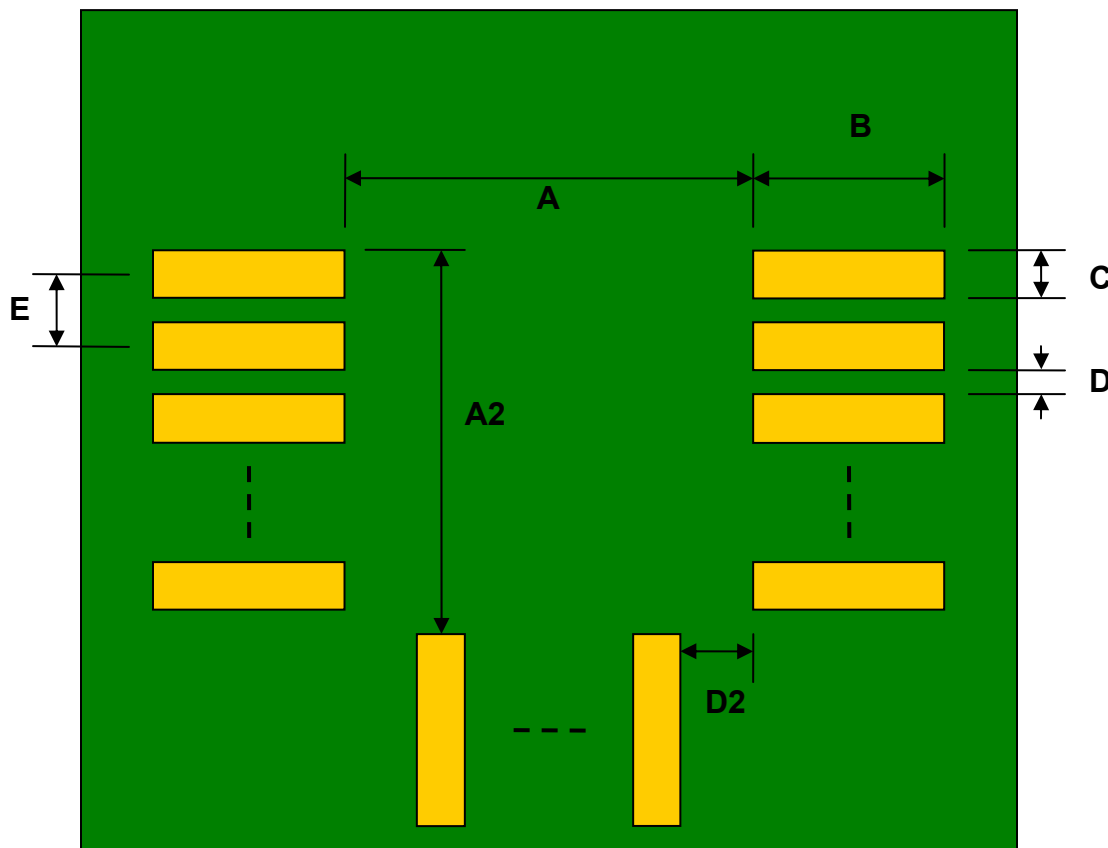


RN42 to DIP-32 SMT Adapter (1.2 mm pitch, 25.8 x 13.4 mm body)

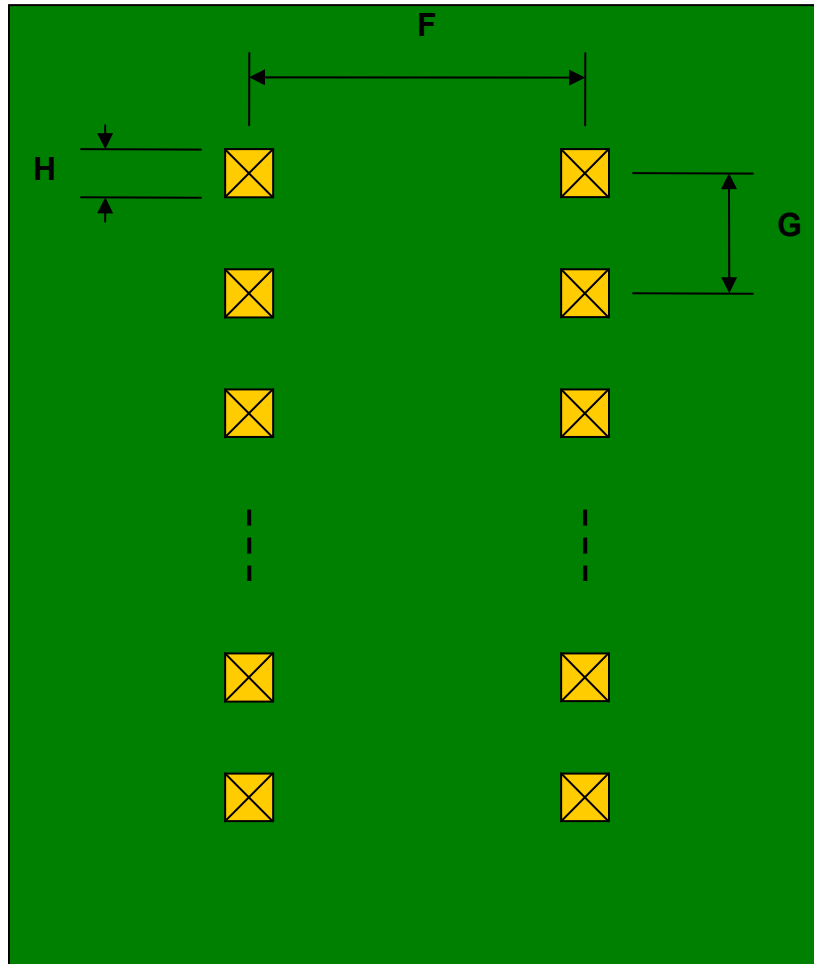
REF.	DIMENSIONS					
	mm			inches		
	MIN.	TYP.	MAX.	MIN.	TYP.	MAX.
A		10.80				
A2		15.10				
B		2.00				
C		0.80				
D		0.40				
D2		0.90				
E		1.20				
F					0.600	
G					0.100	
H					0.025	

Top View (SMT Footprint)



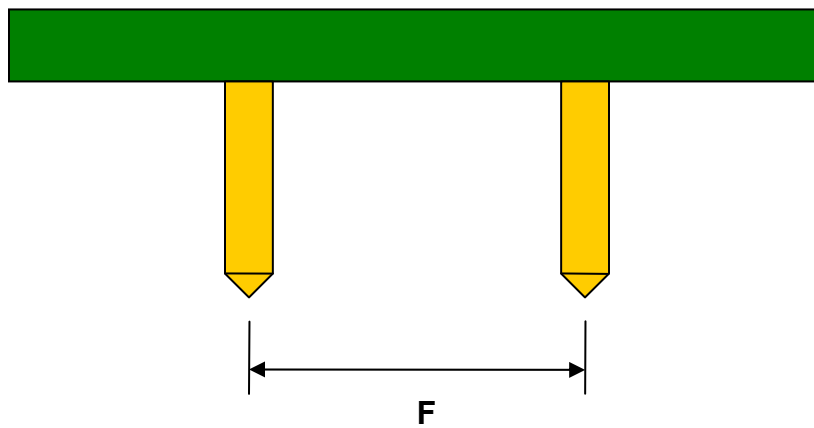
(Representative drawing only - not to scale)

Bottom View (DIP Pins)



(Representative drawing only - not to scale)

Side View (DIP Pins)



(Representative drawing only - not to scale)