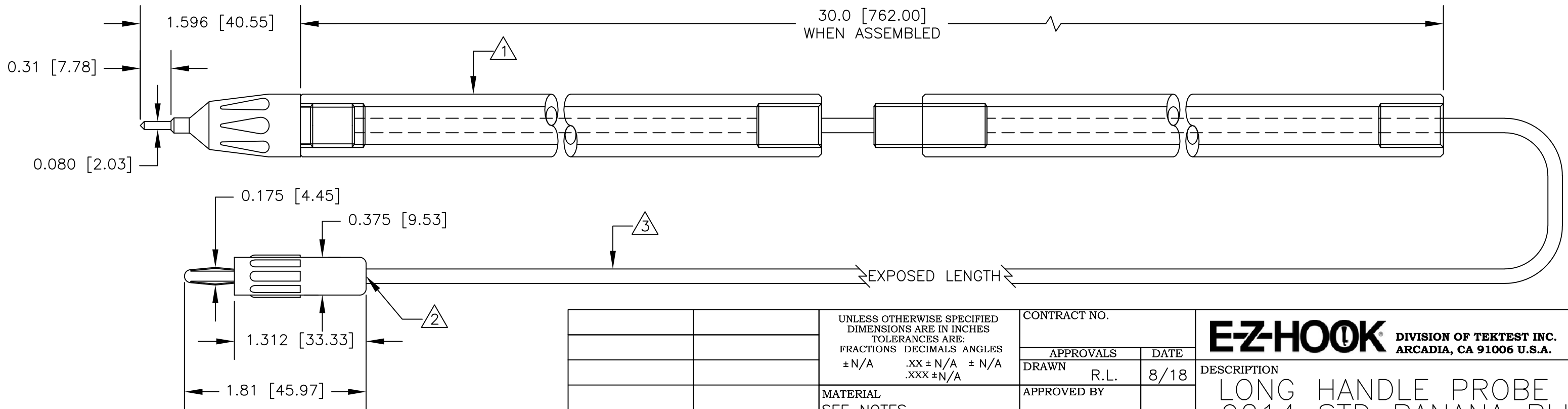


NOTES: UNLESS OTHERWISE SPECIFIED

- P/N: 40 PROBE  
HOUSING: MOLDED NYLON. AVAILABLE IN BLACK OR RED  
CONTACT: NICKEL PLATED BRASS.  
TUBING: CLEAR ACRYLIC  
ADAPTER : ANODIZED ALUMINUM. AVAILABLE IN BLACK OR RED
- P/N: 9214COLOR  
HOUSING: MOLDED ACETAL. AVAILABLE IN BLK & RED  
FRAME: NICKEL PLATED BRASS.  
CONTACT: NICKEL PLATED BeCu OR PHOSPHOR BRONZE.
- P/N: W-600/COLOR  
18AWG TINNED COPPER  
0.144 [3.66] O.D. PVC INSULATION  
AVAILABLE IN TEN COLORS.
- PERFORMANCE:  
MAXIMUM CURRENT: 4.0 AMPS  
MAXIMUM VOLTAGE: HANDHELD: 33VAC/60VDC  
HANDS FREE: 3500 VRMS  
MAXIMUM TEMPERATURE: 176°F (80°C)

LTR	REVISIONS		DATE	APPROVED
	DESCRIPTION			



UNLESS OTHERWISE SPECIFIED DIMENSIONS ARE IN INCHES TOLERANCES ARE: FRACTIONS DECIMALS ANGLES ± N/A .XX ± N/A ± N/A .XXX ± N/A		CONTRACT NO.		<b>E-Z-HOOK</b> DIVISION OF TEKTEST INC. ARCADIA, CA 91006 U.S.A.	
		APPROVALS	DATE		
MATERIAL SEE NOTES		DRAWN	R.L.	8/18	
		APPROVED BY			
FINISH SEE NOTES		SIZE	CODE IDENT NO.	DRAWING NO.	REV.
NEXT ASSY	USED ON	<b>B</b>	<b>08505</b>	BX640	
APPLICATION		DO NOT SCALE DRAWING		SCALE	
				1:1	SHEET 1 OF 1