



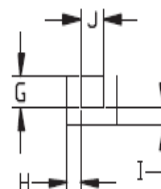
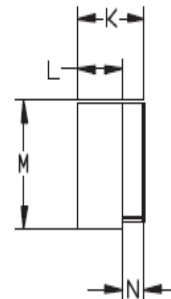
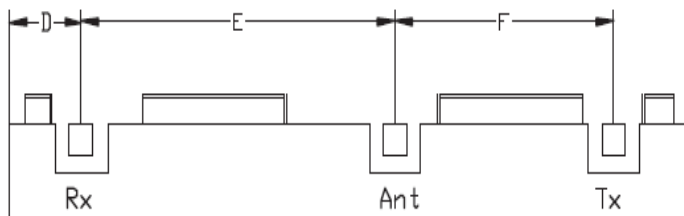
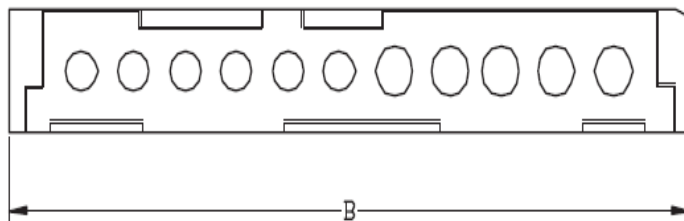
<u>Characteristics</u>	<u>TX</u>	<u>RX</u>
Passband:	1626.5-1660.5 MHz	1525-1559 MHz
Bandwidth:	34 MHz	34 MHz
Passband Return Loss:	10 dB min	10 dB min
Passband Insertion Loss:	.9 dB max	.9 dB max
Passband Ripple:	.5 dB max	.5 dB max
Input / Output Impedance:	50 Ohms	50 Ohms
Isolation:	65 dB min	65 dB min
Power Handling:	5 W max	5 W max

<u>Mechanical</u>	
Mounting Method:	SMT
Dimensions:	60.8 x 10.59 x 9.25 mm

<u>Environmental</u>	
Operating Temperature:	-40 to +70 deg.C
Storage Temperature:	-50 to +90 deg.C

This product is RoHs compliant.

Outline Drawing:



Dim	Nominal (mm)	Tolerance (mm) +/- or max
A		
B	60.8	max
C		
D	6.43	0.25
E	27.82	0.13
F	19.49	0.13
G	2.03	0.13
H	1.27	0.13
I	1.27	0.13
J	2.03	0.13
K	9.25	max
L	6.69	0.25
M	10.59	max
N	2.29	0.13



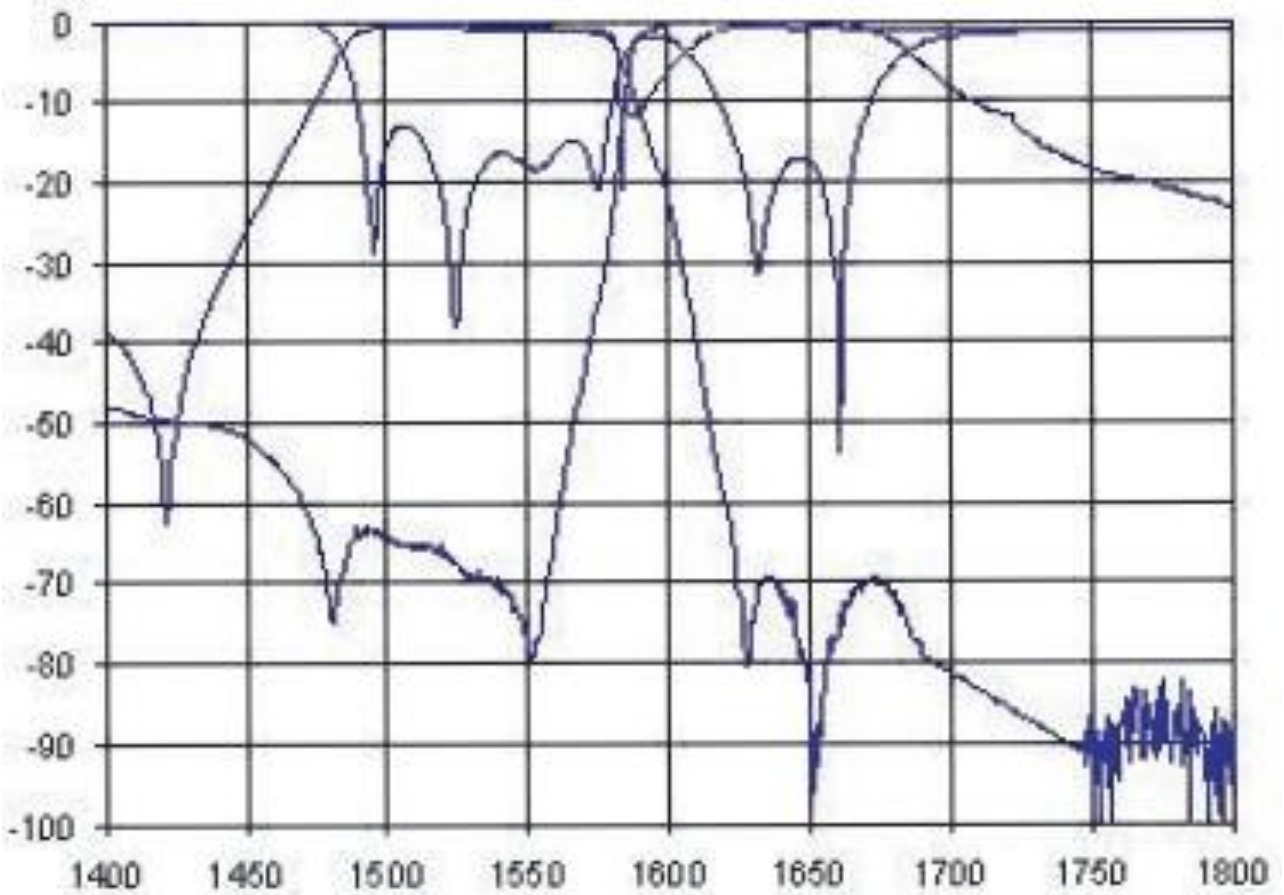
ANATECH ELECTRONICS INC
RF & Microwave Filters & Products

1600 MHz Ceramic Duplexer

Part Number: AM1600D803



Response Plot:





ANATECH ELECTRONICS INC
RF & Microwave Filters & Products

1600 MHz Ceramic Duplexer

Part Number: AM1600D803



PCB Layout:

