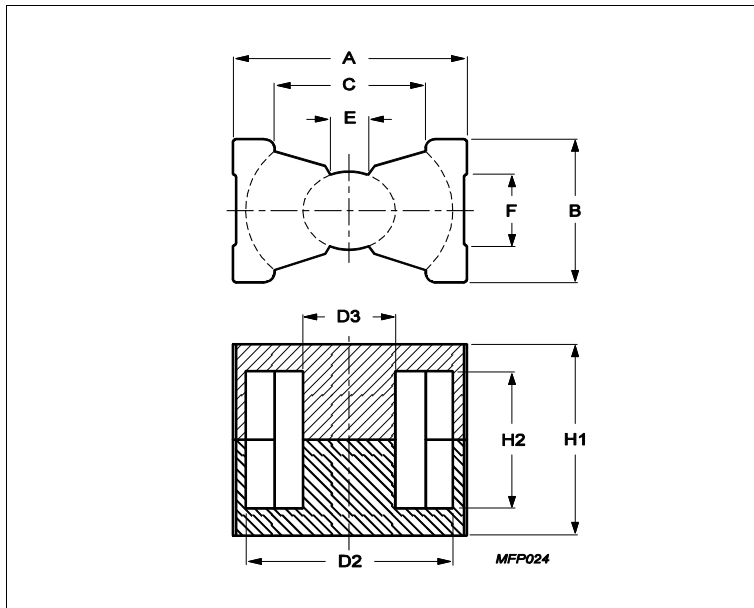


## Core **PQ50/50**



Effective parameters			
	Parameter	Value	Unit
$\Sigma(I/A)$	core factor (C1)	0.345	mm <sup>-1</sup>
<b>Ve</b>	effective volume	37100	mm <sup>3</sup>
<b>Le</b>	effective length	113	mm
<b>Ae</b>	effective area	328	mm <sup>2</sup>
<b>Amin</b>	minimum area	314	mm <sup>2</sup>
<b>m</b>	PQ50/50	≈ 195	g/set

### Dimensions for product: PQ50/50

	Nom	Tol +	Tol -	Max	Min	Unit
<b>A</b>	51.00	0.70	0.70	51.70	50.30	mm
<b>B</b>	32.00	0.60	0.60	32.60	31.40	mm
<b>C</b>					32.00	mm
<b>D2</b>	44.00	0.70	0.70	44.70	43.30	mm
<b>D3</b>	20.00	0.35	0.35	20.35	19.65	mm
<b>E</b>					8.15	mm
<b>F</b>					18.00	mm
<b>H1</b>	50.00	0.50	0.50	50.50	49.50	mm
<b>H2</b>	36.10	0.60	0.60	36.70	35.50	mm

### Inductance factor

Material	Value	Tol +	Tol -	Unit
3C94	7400	25%	25%	nH/turns <sup>2</sup>
3C95	9200	25%	25%	nH/turns <sup>2</sup>
3C96	6300	25%	25%	nH/turns <sup>2</sup>
3C97	9200	25%	25%	nH/turns <sup>2</sup>
3F36	4200	25%	25%	nH/turns <sup>2</sup>
3F4	3000	25%	25%	nH/turns <sup>2</sup>

### Power loss: 3C94

Measuring conditions			Max	Unit
100 kHz	200 mT	100 °C	19.000	W/set

### Power loss: 3C95

Measuring conditions			Max	Unit
----------------------	--	--	-----	------

## Core **PQ50/50**

Power loss: 3C95				
Measuring conditions			Max	Unit
100 kHz	200 mT	100 °C	18.000	W/set
100 kHz	200 mT	25 °C	19.000	W/set
Power loss: 3C96				
Measuring conditions			Max	Unit
100 kHz	200 mT	100 °C	17.000	W/set
400 kHz	50 mT	100 °C	9.600	W/set
Power loss: 3C97				
Measuring conditions			Max	Unit
100 kHz	200 mT	60 °C	19.000	W/set
100 kHz	200 mT	120 °C	18.000	W/set
100 kHz	200 mT	140 °C	22.000	W/set
Power loss: 3F36				
Measuring conditions			Max	Unit
500 kHz	50 mT	100 °C	7.900	W/set
500 kHz	100 mT	100 °C	53.000	W/set
Power loss: 3F4				
Measuring conditions			Max	Unit
1000 kHz	30 mT	100 °C	14.000	W/set
3000 kHz	10 mT	100 °C	23.000	W/set

Bsat					
Measuring conditions			Material	Min	Unit
25 kHz	250 A/m	100 °C	3C94	320	mT
25 kHz	250 A/m	100 °C	3C95	330	mT
25 kHz	250 A/m	100 °C	3C96	340	mT
25 kHz	250 A/m	100 °C	3C97	330	mT
25 kHz	250 A/m	100 °C	3F36	340	mT
25 kHz	250 A/m	100 °C	3F4	330	mT

Accessories		
Ordering name	Description	Ordering code
CSV-PQ50/50-1S-12P	Coil former, termoset, vertical	F0SPQ05050CV00112P