

SURFBOARDS®



THE BREADBOARDING MEDIUM FOR SURFACE MOUNT™

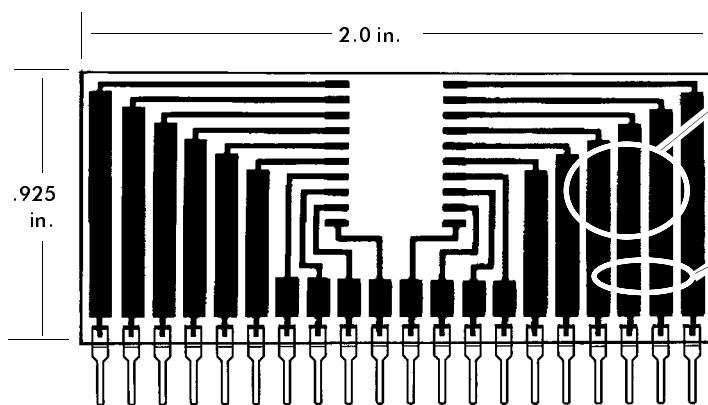
9000 SERIES FOR I.C.s

IDS9210A 3-9-99

MODEL 9210

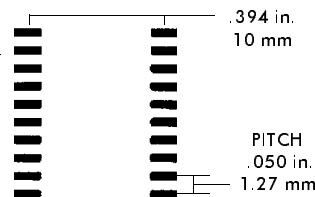
ACCEPTS 16, 18 OR 20 PIN WIDE S.O.I.C.

BUILD PLUG-IN TEST CIRCUITS AND MODULES



SINGLE-IN-LINE (SIP) PINS
ON .100 in. CENTERS

I.C. FOOTPRINT
ACCEPTS INDUSTRY STANDARD
16, 18, OR 20 PIN
WIDE SOICs



The 9210 accepts wide versions of the popular SOIC in up to 20 pin packages. Direct connection from the IC to SIP pins is provided. Large vertical foil areas allow for mounting 0805 or 1206 devices across lines. Modify foils (see right) to create zones for additional parts in line or to re-configure board. 20 pin SIP module plugs into solderless breadboards and sockets, or solder into conventional breadboard.

JUST ADD PARTS AND PLUG IN (TM)



0805, 1206

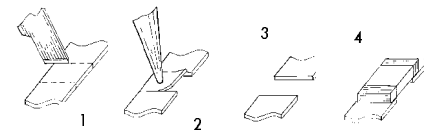
STRADDLE

I.C. pins fan out to peripheral part mounting areas capable of accepting several surface mount devices

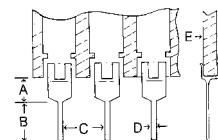
FOIL MODIFICATIONS EXPAND VERSATILITY

Typical of many Surfboards are large pad areas which may be modified to create additional part mounting zones or expand layout or connection options.

- 1: Score foil with sharp razor to define new zone.
- 2: Apply heat with iron to delaminate foil section.
- 3: New mounting zone has been created.
- 4: Solder component to new mounting zone.



PIN SPECIFICATIONS / TOLERANCES



In Inches	
A=	.062 ± .006
B=	.130 ± .010
C=	.100 ± .005
D=	.020 ± .004
E=	.031 ± .005

BOARD SPECIFICATIONS

BOARD MATERIAL: .031 ± .005 In. Thick G-10 FR-4 Glass Epoxy or equivalent.

CIRCUITS: 1 oz Copper with solder coated pads.

TOLERANCES: Given in inches

Board Size ± .020 / OAL ± .040

Circuit pattern/position ± .005

Copyright 1997,1999 by Capital Advanced Technologies, Inc. All rights reserved. Surfboards Are a registered trademark of Capital Advanced technologies, Inc. All other trademarks or registered trademarks are property of their respective owners. Availability, specifications, and prices are subject to change without notice. All information given is believed to be accurate but is not guaranteed. The user of information given or products represented by such information is responsible for determining the suitability of said information or products for a given purpose.

CAPITAL ADVANCED TECHNOLOGIES, INC.

CAROL STREAM, ILLINOIS. USA.

PHONE 630-690-1696 WWW.CapitalAdvanced.Com FAX-ON-DEMAND 630-690-2865