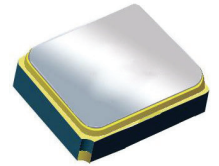


# Surface Mount 1902.00MHz SAW Filter



1.4 x 1.1 x 0.7 mm

**AFS14A35-1902.00-T3**

Moisture Sensitivity Level (MSL) – This product is Hermetically Sealed and not Moisture Sensitive - MSL = N/A: Not Applicable



**RoHS  
Compliant**

## FEATURES:

- 1.4 x 1.1 x 0.7 mm low profile SMT package
- Low Insertion loss
- Excellent selectivity with high out-of-band rejection

## APPLICATIONS:

- Wireless Communication
- Remote Control
- Cellular Phones

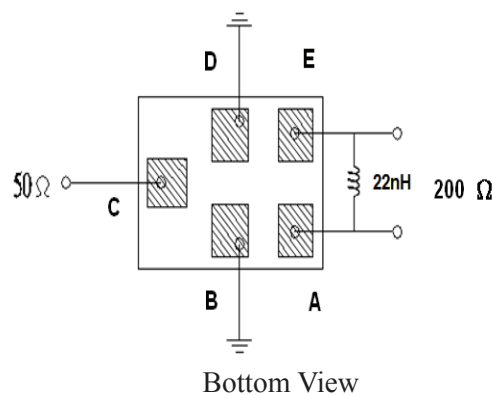
## ELECTRICAL SPECIFICATIONS:

### Maximum Ratings

Item	Value
Input Power Level	+10 dBm max.
DC Permissive Voltage	3.0V DC max.
Operating Temperature Range	-20°C to + 75°C
Storage Temperature Range	-30°C to + 85°C

Parameters	Minimum	Typical	Maximum	Units	Notes
Center Frequency ( $f_c$ )		1902.00		MHz	
Insertion Loss (IL)		1.8	2.4	dB	(1884.55~1919.45MHz)
Effective Bandwidth		35		MHz	
Amplitude Ripple		0.5	1.0	dB	(1884.55~1919.45MHz)
Worst-Case Input / Output Return Loss		9.54	7.35	dB	(1884.55~1919.45MHz)
Output amplitude balance ( $ S_{31}/S_{21} $ )	-3	+1.9	+3.0	dB	(1884.55~1919.45 MHz)
Output Phase Balance ( $\Phi(S_{31})-\Phi(S_{21})+180^\circ$ )	-12	+6	+12	°	(1884.55~1919.45 MHz)
Stop-band Attenuation (Referenced to 0.0 dB)	35	40		dB	1349~1455 MHz
	35	46			1614~1687 MHz
	34	36			1731~1801 MHz
	18	22			1986~2056 MHz
	25	33			2037~2039 MHz
	35	42			2113~2186 MHz
	40	48			2386~2451 MHz
	40	51			3000~3840 MHz
	35	48			4941~5760 MHz
Terminating Source Impedance ( $Z_s$ )		50		$\Omega$	
Terminating Load Impedance ( $Z_L$ ) (Differential)		200 $\Omega$ // 22nH			

## TEST CIRCUIT:

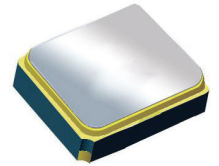


# Surface Mount 1902.00MHz SAW Filter

AFS14A35-1902.00-T3

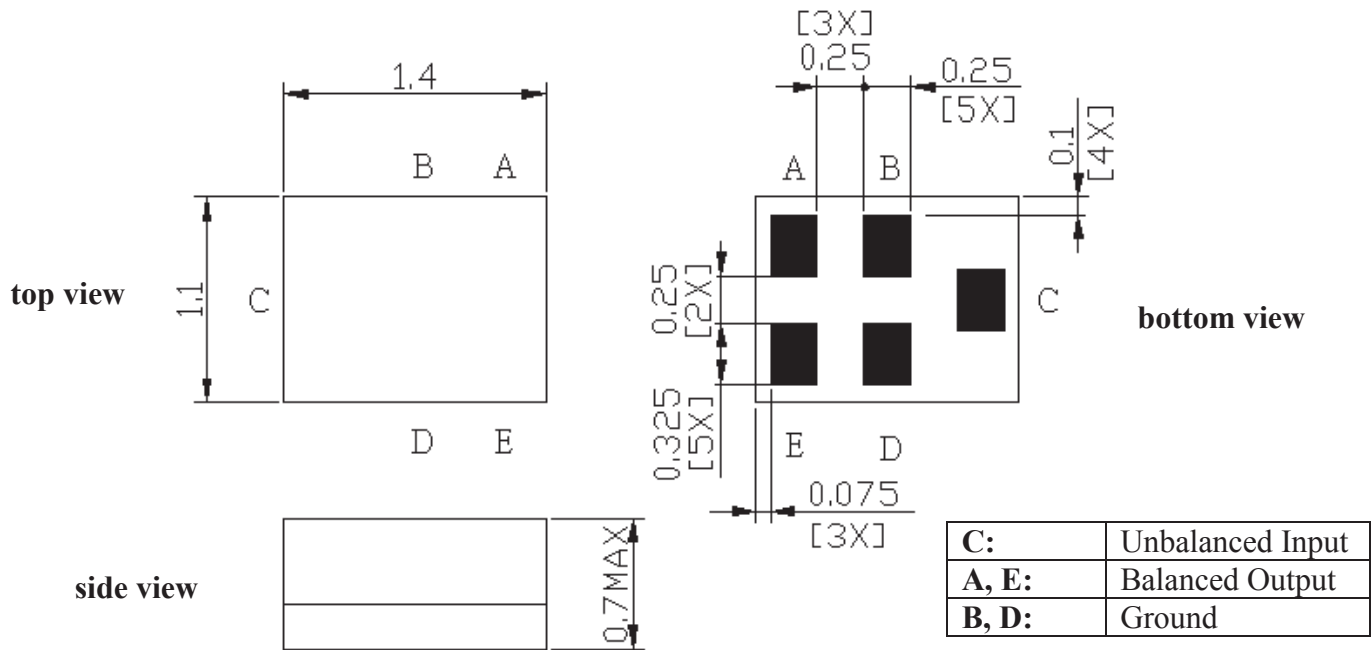


RoHS  
Compliant

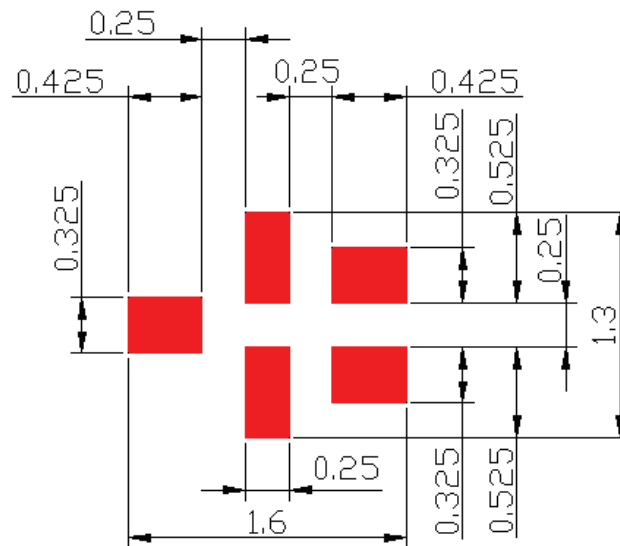


1.4 x 1.1 x 0.7 mm

## OUTLINE DIMENSIONS:



### Recommended Land Pattern:

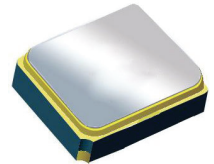


# Surface Mount 1902.00MHz SAW Filter

AFS14A35-1902.00-T3



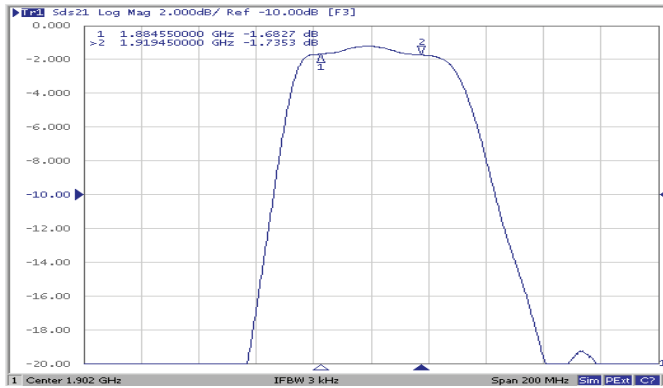
RoHS  
Compliant



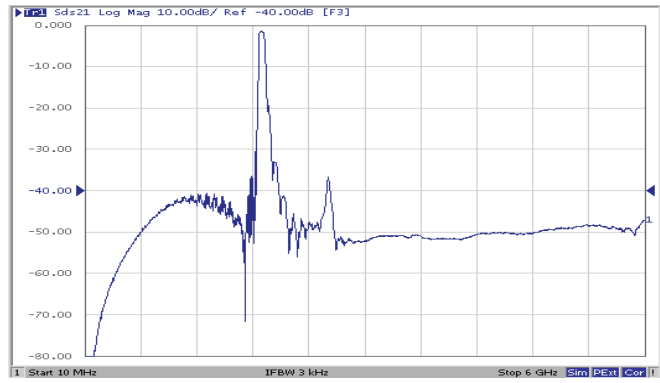
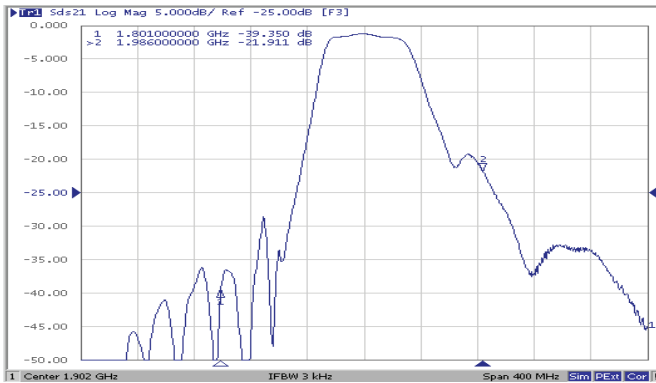
1.4 x 1.1 x 0.7 mm

## FREQUENCY CHARACTERISTICS:

Filter Frequency Response (Narrowband)

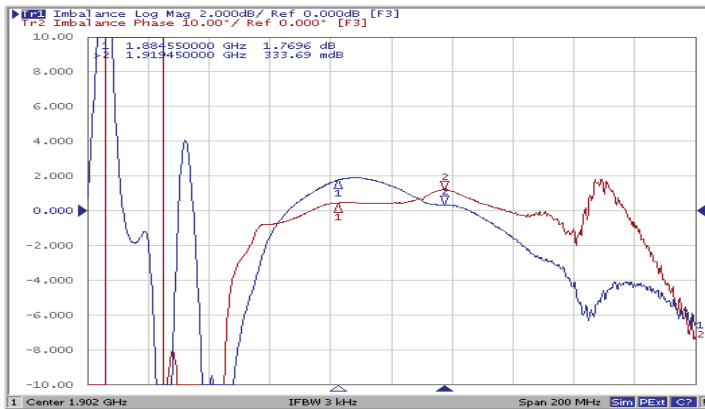


Filter Frequency Response (Wideband)

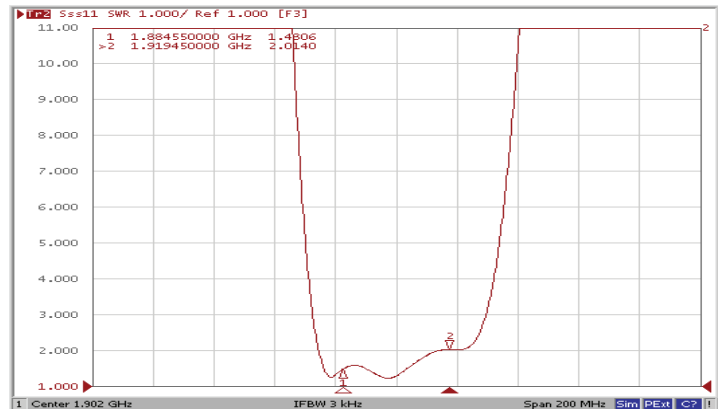


## REFLECTION FUNCTIONS:

S11



S22



ABRACON IS  
ISO 9001:2008  
CERTIFIED



ABRACON  
CORPORATION

Visit [www.abracon.com](http://www.abracon.com) for Terms & Conditions of Sale  
30332 Esperanza, Rancho Santa Margarita, California 92688  
tel 949-546-8000 | fax 949-546-8001 | [www.abracon.com](http://www.abracon.com)

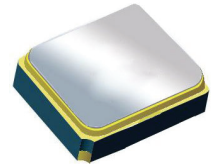
Revised: 04.16.13

# Surface Mount 1902.00MHz SAW Filter

AFS14A35-1902.00-T3

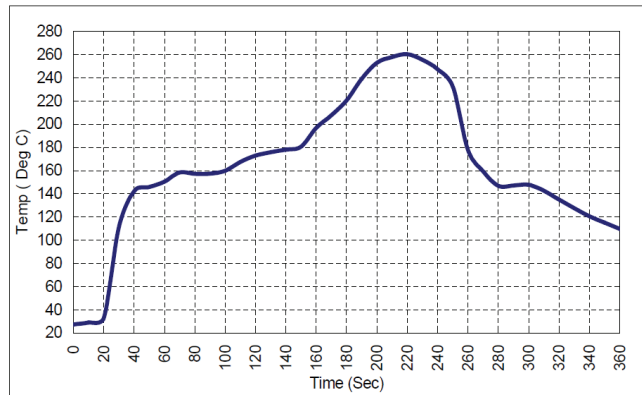


RoHS  
Compliant



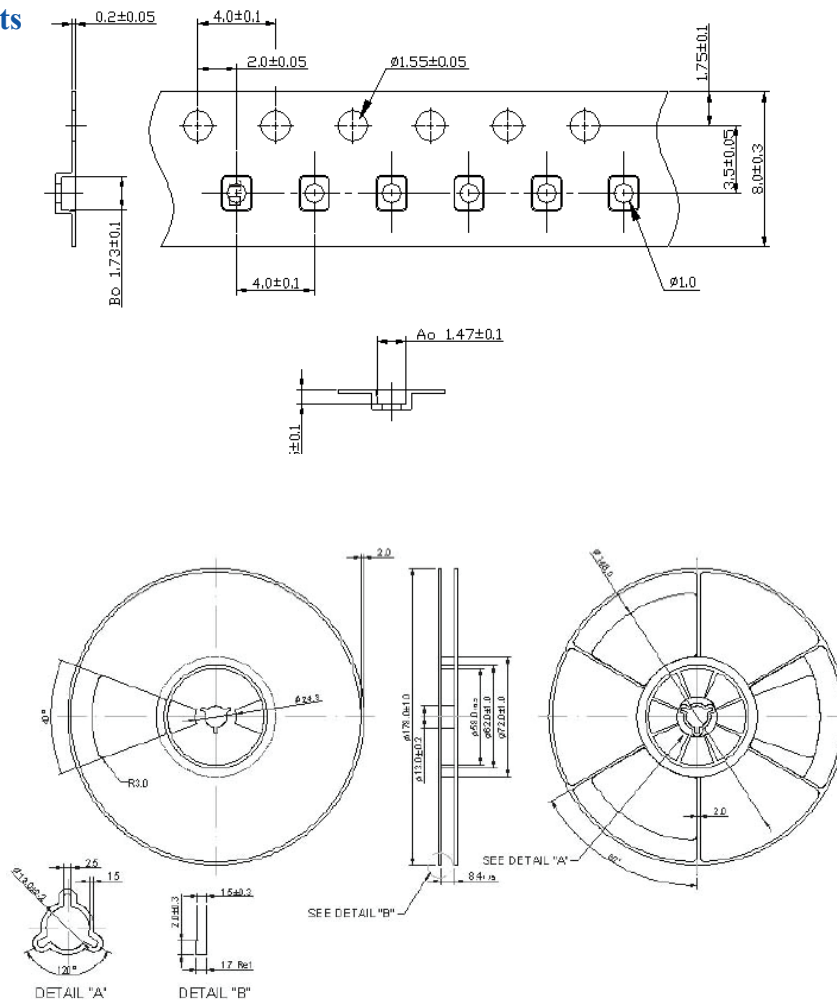
1.4 x 1.1 x 0.7 mm

## REFLOW PROFILE:



## PACKAGING: 3000 Units/Reel “-T2” parts (2k/reel) are no longer available effective 01/01/2013

Reel Count : 7" = 3k units



Dimensions: mm

**ATTENTION:** Abracon Corporation's products are COTS – Commercial-Off-The-Shelf products; suitable for Commercial, Industrial and, where designated, Automotive Applications. Abracon's products are not specifically designed for Military, Aviation, Aerospace, Life-dependant Medical applications or any application requiring high reliability where component failure could result in loss of life and/or property. For applications requiring high reliability and/or presenting an extreme operating environment, written consent and authorization from Abracon Corporation is required. Please contact Abracon Corporation for more information.

ABRACON IS  
ISO 9001:2008  
CERTIFIED



Visit [www.abracon.com](http://www.abracon.com) for Terms & Conditions of Sale  
30332 Esperanza, Rancho Santa Margarita, California 92688  
tel 949-546-8000 | fax 949-546-8001 | [www.abracon.com](http://www.abracon.com)

Revised: 04.16.13