



## Accessories

– for Zlinx™ Standard Wireless I/O products

**B+B SMARTWORX**

Powered by

**ADVANTECH**

[www.advantech-bb.com](http://www.advantech-bb.com)

**ZZx series industrial I/O modules** add wireless remote I/O to Modbus systems – from PLCs to HMIs to PC based software applications.

B+B SmartWorx offers a selection of accessories and replacement parts for use with these products.

### ORDERING INFORMATION

MODEL NUMBER	DESCRIPTION	FOR USE WITH
<b>ZP9D-DIN1</b>	DIN Rail Mounting Clip, Spring, Screws	ZZx Wireless I/O
<b>ZZ9D-ANT1</b>	900 MHz, 2.1 dBi Antenna	ZZx Wireless I/O
<b>ZZ24D-ANT1</b>	2.4 GHz, 2.1 dBi Antenna	ZZx Wireless I/O
<b>ZZ-TB1</b>	Terminal Blocks, DIP Switch Cover	ZZx Wireless I/O
<b>ZZ-PROG1-USB</b>	USB Programming Module, Cable, Software CD	ZZx Wireless I/O

### DIN Rail Mounting Bracket

Model ZP9D-DIN1



Model ZP9D-DIN1 is a spare/replacement DIN rail mounting bracket for B+B SmartWorx Zlinx ZZx series standard industrial wireless I/O products.

- + Metal mounting bracket with spring and 4 screws included

### 900 MHz, 2.1 dBi Antenna

Model ZZ9D-ANT1



Model ZZ9D-ANT1 is a 900 MHz spare /replacement antenna for B+B SmartWorx Zlinx ZZx series standard industrial wireless I/O products.

- + 900 MHz, 2.1 dBi
- + RPSMA di-pole

### 2.4 GHz, 2.1 dBi Antenna

Model ZZ24D-ANT1

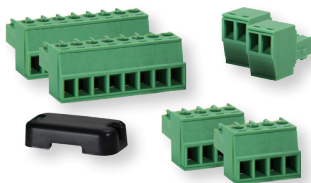


Model ZZ24D-ANT1 is a 2.4 GHz spare/replacement antenna for B+B SmartWorx Zlinx ZZx series standard industrial wireless I/O products.

- + 2.4 GHz, 2.1 dBi
- + RPSMA di-pole

### Terminal Blocks & DIP Switch Cover

Model ZZ-TB1



Model ZZ-TB1 accessory kit includes removable terminal blocks and a DIP switch cover for B+B SmartWorx Zlinx ZZx series standard industrial wireless I/O products. Includes:

- + (2) 2-position 3.5mm terminal block, 8A, 300V, 28-16 AWG
- + (2) 4-position 3.5mm terminal block, 8A, 300V, 28-16 AWG
- + (2) 8-position 3.5mm terminal block, 8A, 300V
- + (1) protective DIP switch cover

### USB Programming Module

Model ZZ-PROG1-USB



Model ZZ-PROG1-USB is a snap-on programming module with cable and software CD for B+B SmartWorx Zlinx ZZx series standard industrial wireless I/O products. The module provides a convenient way to interface base and expansion modules with a PC and the software used to configure them. Includes:

- + ZZ-PROG1-USB Configuration Module with USB interface instead of serial interface
- + Modbus-Mode Quick Start Guide (print)
- + Peer-to-Peer Mode Quick Start Guide (print)
- + 1 USB cable, 1 meter
- + CD-ROM disc with:
  - Zlinx I/O Manager Configuration Software
  - Zlinx I/O Firmware Updater
  - USB Driver
  - Manual (PDF format)
  - Modbus-Mode Quick Start Guide (PDF)
  - Peer-to-Peer Mode Quick Start Guide (PDF)

All product specifications are subject to change without notice.  
Accessories\_ZlinxStdWirelessIO\_5017ds