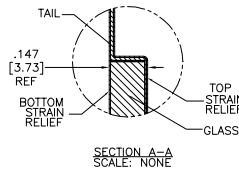


OGA DIAGONAL: 18.25 [463.63]
 VA DIAGONAL: 17.54 [445.50]
 PA DIAGONAL: 16.54 [420.12]

| TOP LEVEL NUMBER | US NUMBER | TYPE | DIM "A" (TOTAL GLASS TO CONNECTOR) | A/G FINISH | PROD SPEC |
|------------------|----------------|-------|------------------------------------|------------|-----------|
| 17-8421-203 | 98-0003-2589-8 | FFC | 4.27" [108.46] | AG500 | 23655 |
| 17-8421-221 | 98-0003-2596-3 | SER | 4.27" [108.46] | AG500 | 23655 |
| 17-8421-204 | 98-0003-2590-6 | FFC | 6.00" [152.40] | AG500 | 23655 |
| 17-8421-223 | 98-0003-2597-1 | SER | 6.00" [152.40] | AG500 | 23655 |
| 17-8421-227 | 98-0003-2599-7 | SER | 8.00" [203.20] | AG500 | 23655 |
| 17-8421-205 | 98-0003-2591-4 | FFC | 8.00" [203.20] | AG500 | 23655 |
| 17-8421-206 | 98-0003-2190-5 | NOV | SEE DWG | AG500 | 23655 |
| 17-8421-218 | 98-0003-2594-8 | USB R | 4.27" [108.46] | AG500 | 23655 |
| 17-8421-220 | 98-0003-3151-6 | USB R | 6.00" [152.40] | AG500 | 23655 |
| 17-8421-226 | 98-0003-3152-4 | USB R | 8.00" [203.20] | AG500 | 23655 |
| 17-8421-230 | 98-0003-2276-2 | HID M | 8.00" [203.20] | AG500 | 23655 |
| N/A | 98-0003-3537-6 | HID D | 8.00" [203.20] | AG500 | 23655 |
| N/A | 98-0003-3974-1 | DUAL | 8.00" [203.20] | AG500 | 23655 |
| N/A | 98-1100-0095-1 | FFC | 8.00" [203.20] | WC100 | 34523 |
| N/A | 98-1100-0096-9 | USB R | 8.00" [203.20] | WC100 | 34523 |

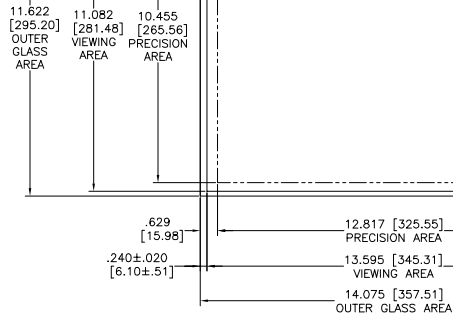


ESD CLAMSHELL CASE IS USED WITH ALL NOV, USB AND SER TERMINATIONS.



.147±.020 [3.73±.51]
 TOTAL THICKNESS OF GLASS, CABLE AND STRAIN RELIEF

.125 [3.18] REF



(FFC)

(HID D)

EXII-7740HC
 98-0003-3065-8
 HID CONTROLLER
 SOLDER SIDE

(HID M)

EXII-7730HC
 98-0003-2813-2
 HID CONTROLLER
 SOLDER SIDE

(USB R)

EXII-7760UC
 98-0003-2814-0
 USB CONTROLLER
 SOLDER SIDE

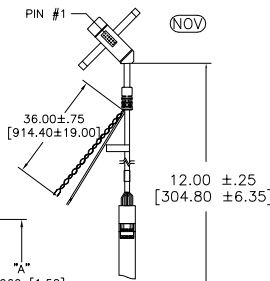
(SER)

EXII-7720SC
 98-0003-2217-6
 SERIAL CONTROLLER
 SOLDER SIDE

(DUAL)

98-0003-3818-0
 DUAL MODE CONTROLLER
 SOLDER SIDE

(NOV)



NOTES:

- WEIGHT OF GLASS IN GRAMS: 804±10%
- NICOMATIC HOUSING P/N: OLOS
- NICOMATIC RECEPTACLES (PINS) MATTE TIN PLATED P/N: 14106-12 HOUSING ORIENTED WITH LATCH DOWN

| PINOUT | |
|--------|------|
| 1 | LL |
| 2 | UL |
| 3 | SHLD |
| 4 | UR |
| 5 | LR |

| UNITS | INCHES [MM] |
|---------------------------------------|-------------|
| TOLERANCES UNLESS OTHERWISE SPECIFIED | |
| .X | ± |
| .XX | ±.03 [.76] |
| .XXX | ±.015 [.38] |
| ANGLES | ±1° |

3M 3M TOUCH SYSTEMS
 METHUEN, MA USA

© COPYRIGHT 2004
 THIS DOCUMENT IS COPYRIGHTED PROPERTY OF THE 3M COMPANY AND MAY NOT BE REPRODUCED WITHOUT 3M WRITTEN PERMISSION OR USED OR DISCLOSED FOR OTHER THAN 3M AUTHORIZED PURPOSES.

THIRD ANGLE PROJECTION

DO NOT SCALE DRAWING

SCALE 1 = 1

| | | | |
|-------------------|-----------------------|--------------|-----------|
| P | REVISED PER CO 036265 | 4/13 | SEB |
| N | REVISED PER CO 036100 | 2/13 | SEB |
| REV | CHANGE NOTICE | DATE | DRW |
| TITLE | | | |
| MARKETING DRAWING | | | |
| SCT32NN 17.54" | | | |
| CAD FORMAT | AUTOCAD | SHEET | 1 OF 1 |
| SIZE | C | DOCUMENT NO. | TSD-28165 |
| REV | P | | |