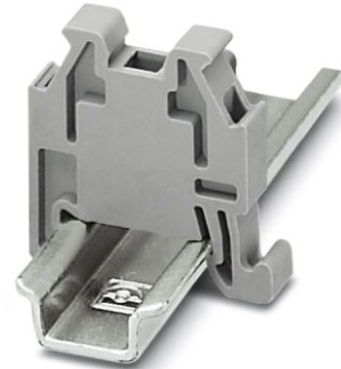


# CLIPFIX 15

Order No.: 3022263

<http://eshop.phoenixcontact.de/phoenix/treeViewClick.do?UID=3022263>

Snap-on end bracket, to be snapped onto NS 15 DIN rail

**Commercial data**

EAN	4017918976330
Pack	50 pcs.
Customs tariff	39269097
Weight/Piece	0.001892 KG
Catalog page information	Page 696 (CL-2009)

**Product notes**WEEE/RoHS-compliant since:  
01/01/2003

<http://www.download.phoenixcontact.com>  
Please note that the data given here has been taken from the online catalog. For comprehensive information and data, please refer to the user documentation. The General Terms and Conditions of Use apply to Internet downloads.

**Technical data****General data**

Height	22.6 mm
Length	22 mm
Width	5.2 mm
Material	PA
Color	gray
Inflammability class acc. to UL 94	V2

**Accessories**

Item	Designation	Description
------	-------------	-------------

**Assembly**

1401682	NS 15 PERF 2000MM	DIN rail, material: steel, perforated, height 5.5 mm, width 15 mm, length: 2 m
1401695	NS 15 UNPERF 2000MM	DIN rail, material: Steel, unperforated, height 5.5 mm, width 15 mm, length: 2 m

**General**

1401608	NS 15 BLK PERF 2000MM	DIN rail, material: steel, perforated, height 5.5 mm, width 15 mm, length: 2 m
---------	-----------------------	--

**Address**

PHOENIX CONTACT Deutschland GmbH  
Flachmarktstr. 8  
32825 Blomberg, Germany  
Phone +49 5235 3 12000  
Fax +49 5235 3 41200  
<http://www.phoenixcontact.de>



© 2010 Phoenix Contact  
Technical modifications reserved;