

THIS COPY IS PROVIDED ON A RESTRICTED BASIS AND IS NOT TO BE USED IN ANY WAY DETRIMENTAL TO THE INTERESTS OF PANDUIT CORP.

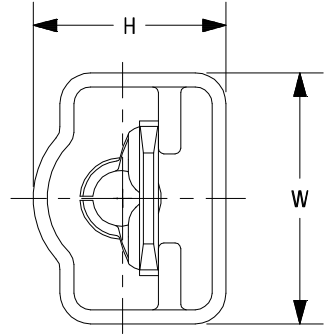
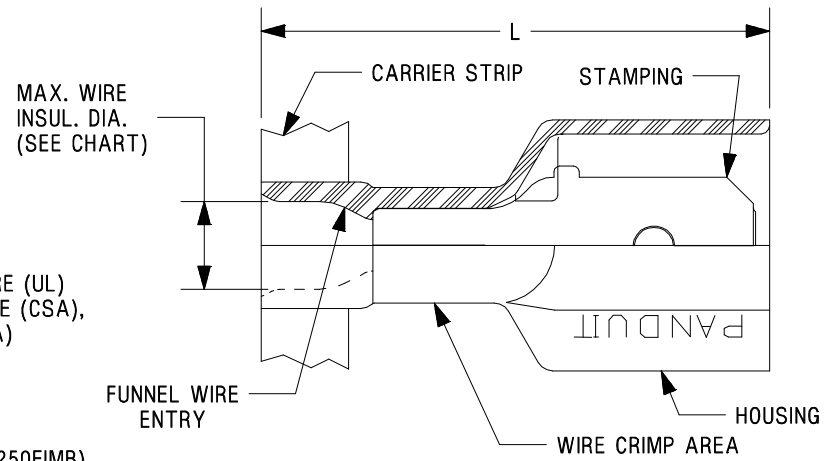
PANDUIT PART #	TAB SIZE	WIRE RANGE		COLOR (TRANSLUCENT)	MAX. WIRE INSULATION DIAMETER	DIMENSIONS in. [mm]			TOOL CHART	
		AWG	METRIC			L ± .03 [0,8]	W ± .01 [0,3]	H ± .01 [0,3]	CA9 SERIES CRIMP DIE	CA-800(EZ) SERIES CRIMP DIE
DNF18-250FIMB-K	.250 X .032 [6,3 X 0,8]	22-18	0,5-1,0	RED	.135 [3,43]	.91 [23,1]	.45 [11,4]	.34 [8,6]	CA9-4B	CD-800-4
DNF14-250FIMB-K	.250 X .032 [6,3 X 0,8]	16-14	1,5-2,5	BLUE	.160 [4,06]	.91 [23,1]	.46 [11,7]	.34 [8,6]	CA9-5B	CD-800-5
DNF10-250FIMB-K	.250 X .032 [6,3 X 0,8]	12-10	4,0-6,0	YELLOW	.220 [5,59]	.96 [24,4]	.45 [11,4]	.36 [9,1]	CA9-18B	CD-800-18

PRESS/APPLICATOR COMPATIBILITY CHART

PRESS	CP-871	CP-861
APPLICATOR	CA9 CA-800EZ	CA-800

NOTES:

- UL LISTED AND CSA CERTIFIED FOR:
 - A. STRANDED COPPER WIRE ONLY
 - B. 600 V MAX VOLTAGE RATING
 - C. 257°F [125°C] MAX OPERATING TEMPERATURE (UL)
 - D. 221°F [105°C] MAX OPERATING TEMPERATURE (CSA), EXCEPT DNF10-250FIMB (257°F [125°C]) (CSA)
- MATERIAL:
 - A. STAMPING: BRASS, NICKEL PLATED
COPPER, NICKEL PLATED (DNF10-250FIMB)
 - B. HOUSING: NYLON 6/6
- WIRE STRIP LENGTH: $9/32" \begin{smallmatrix} +1/32 \\ -0 \end{smallmatrix}$ [7,1 mm $\begin{smallmatrix} +0,8 \\ -0 \end{smallmatrix}$]
 $3/8" \begin{smallmatrix} +1/32 \\ -0 \end{smallmatrix}$ [9,5 mm $\begin{smallmatrix} +0,8 \\ -0 \end{smallmatrix}$] (DNF10-250FIMB)
- DIMENSIONS IN BRACKETS ARE METRIC EQUIVALENT
- DNF10-250FIMB IS UL LISTED WITH (2) 14GA, STR CU WIRES CRIMPED WITH LISTED TOOLING



LISTED
20H3
E78522



CERTIFIED
LR31212

TITLE DISCO™ MALE DISCONNECTS, NYLON FULLY INSULATED - FUNNEL ENTRY, .250X.032 TAB CUSTOMER DRAWING			
ITEM REVISION NAME N41411BA/09		PANDUIT™	
DATASET FILE NAME N41411BA_DC/09A			
UNLESS OTHERWISE SPECIFIED, DIMENSIONAL TOLERANCES ARE: IN [mm] .x ± .1 [2,54] .xxx ± .005 [.127] .xx ± .01 [.25] ANGLES ± 5°		MATERIAL: SEE NOTES	
DRAWING NUMBER: A41411		DRAWING NUMBER: A41411	
DRAWN BY JV	DATE -	CHK LM	SCALE N.T.S.
REV		SHEET 1 OF 1	
DATE		SIZE A	

REV	DATE	BY	CHK	APR	DESCRIPTION	ECN
09	8.29.16	TMR	TMR	RGB	UPDATED DRAWING TO CURRENT STANDARDS. ADDED UL LISTING WITH (2) 14GA WIRES FOR DNF10-250FIMB	A41411

D10100DA/12