

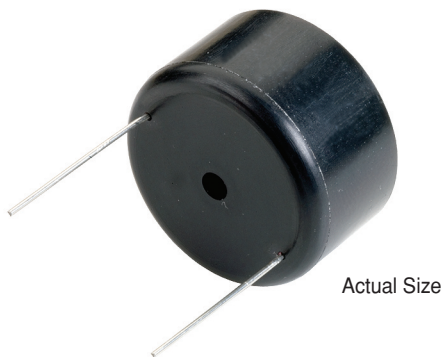
SERIES

**5400R
5400**

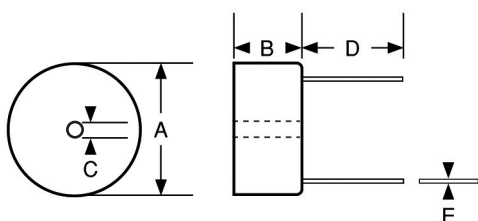


High L Filter Inductors

INDUCTANCE (mH) ±10%
TEST FREQUENCY (kHz)
SRF MINIMUM (kHz)
DC RESISTANCE MAXIMUM (OHMS)
CURRENT 5% (mA)
INCREMENTAL CURRENT 10% (mA)
DASH NUMBER*



Actual Size



SERIES 5400 POWDER CORE						
DASH NUMBER*	INDUCTANCE (mH) ±10%	TEST FREQUENCY (kHz)	SRF MINIMUM (kHz)	DC RESISTANCE MAXIMUM (OHMS)	CURRENT 5% (mA)	INCREMENTAL CURRENT 10% (mA)
-106K	10	1.0	269	1.53	131	204
-126K	12	1.0	235	1.67	120	186
-156K	15	1.0	200	1.88	107	167
-186K	18	1.0	175	2.55	98	152
-226K	22	1.0	150	2.83	88	138
-276K	27	1.0	127	3.15	80	124
-336K	33	1.0	107	3.50	72	113
-396K	39	1.0	92	4.80	66	104
-476K	47	1.0	76	5.31	60	94
-566K	56	1.0	62	5.83	55	86
-686K	68	1.0	48	6.47	50	78
-826K	82	1.0	35	8.89	46	71
-107K	100	1.0	21	9.89	41	65

Optional Tolerances: J = 5% H = 3% G = 2%
*Complete part # must include series # PLUS the dash #

Physical Parameters

	Inches	Millimeters
A	1.30 ± 0.010	33.020 ± 0.254
B	0.73 ± 0.010	18.542 ± 0.254
C	0.150 ± 0.005	3.810 ± 0.127
D	1.00 Min.	25.4 Min.
E	0.032 Typ.	0.813 Typ.

Marking DELEVAN; 5400 followed by the dash number and tolerance letter; date code (YYWWL). Note an R after 5400 indicates a RoHS component.

Example: 5400R-396G

DELEVAN
5400R-396G
0913A

Operating Temperature Range -55°C to +125°C

Inductance Measured at 1kHz, 100mV with no DC Current

Incremental Current The current at which the inductance will be decreased by a maximum of 5% or 10% from its initial 0 DC value

Packaging Bulk Only

Contact the Factory for additional sizes and electrical configurations.

