

ACTIVE 3X FREQUENCY MULTIPLIER (CONT.)

MODEL: SYS3X3738

FEATURES

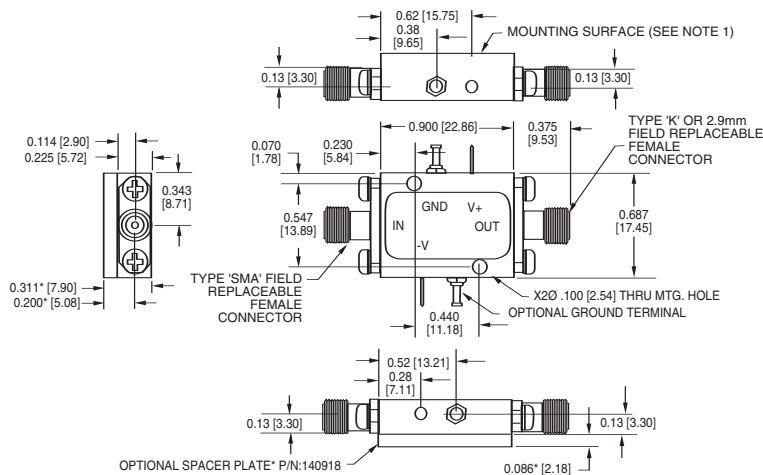
- High fundamental rejection..... -70 dBc
- Output power..... +16 dBm
- Packaging Hermetically sealed

ELECTRICAL SPECIFICATIONS

| INPUT PARAMETERS | CONDITION | UNITS | MIN. | TYP. | MAX. |
|--------------------------|------------------|-------|------|-------|------|
| RF frequency range | | GHz | 12.5 | | 12.9 |
| RF VSWR | 50 ohm reference | Ratio | | 2.1:1 | |
| RF power range | | dBm | | +13 | |
| V+ bias voltage | @ 200 mA max. | VDC | 9 | | 16 |
| V- bias voltage | @ 20 mA max. | VDC | -9 | | -16 |
| TRANSFER CHARACTERISTICS | CONDITION | UNITS | MIN. | TYP. | MAX. |
| Output power | | dBm | +12 | +16 | |
| Fundamental leakage | Input | dBc | | -70 | -50 |
| Second-harmonic leakage | Input | dBc | | -75 | |
| OUTPUT PARAMETERS | CONDITION | UNITS | MIN. | TYP. | MAX. |
| RF frequency range | | GHz | 37 | | 38 |
| RF VSWR | 50 ohm reference | Ratio | | 2.1:1 | |

NOTE: Test data supplied at 25°C; fundamental rejection, output power and second-harmonic leakage.

OUTLINE DRAWING



- NOTES: 1. Unit's mounting surface shall be attached to a heatsink capable of dissipating the devices power consumption without exceeding the operating temperature limits.
 2. All dimensions shown in brackets [] are in millimeters.

MAXIMUM RATINGS

Specification temperature..... +25°C
 Operating temperature -40 to +65°C
 Storage temperature..... -65 to +95°C

ADD SUFFIX TO MODEL NO.

WG (WR28)
 S

OPTIONS

WR28 output waveguide
 Single positive supply

