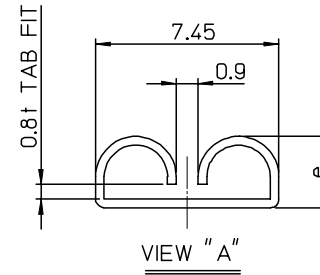
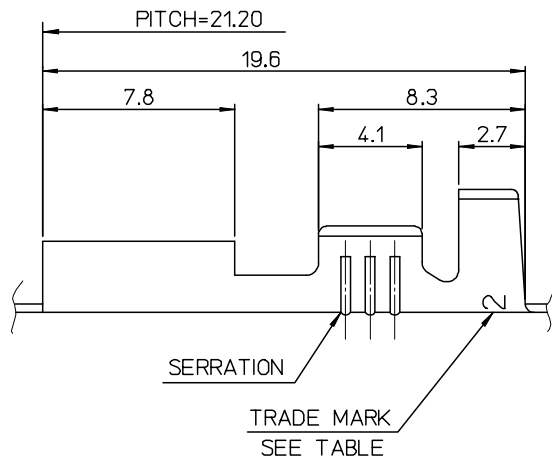
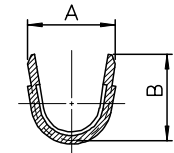


NOTES

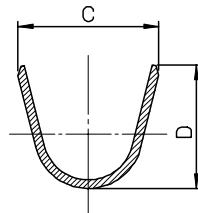
1. MATERIAL : BRASS, 0.35mm THICKNESS
2. RECOMMENDED LENGTH OF WIRE STRIP IS 5.2-5.8 mm
3. FINISH, TENSION : SEE TABLE



ENG. ND.	a	b	c	d	e	WIRE RANGE	PLATED	TRADE MARK	TENSION
35725-3600	5.2	4.6	6.3	6.3		AWG #14-#12	(UNPLATED)	MK2	STANDARD TENSION
35725-3700	3.5	3.5	5.7	5.0	2.9	AWG #18-#14			
35725-3800	2.85	2.9	3.8	3.8		AWG #22-#20			
35725-3610	5.2	4.6	6.3	6.3		AWG #14-#12	(POST-TIN PLATING)		
35725-3710	3.5	3.5	5.7	5.0	2.9	AWG #18-#14			
35725-3810	2.85	2.9	3.8	3.8		AWG #22-#20			
35725-3601	5.2	4.6	6.3	6.3		AWG #14-#12	(UNPLATED)	L MK2	LOW TENSION
35725-3701	3.5	3.5	5.7	5.0	2.95	AWG #18-#14			
35725-3801	2.85	2.9	3.8	3.8		AWG #22-#20			



SECTION B-B''



SECTION C-C''

REVISED	DESCRIPTION
EC NO: KOR2008-0030	
DRWN: JHPARK01	2007/09/10
CHKD: W. YANG	2007/09/10
APPR: YUNSIKKIM	2007/09/10
A	REV

QUALITY SYMBOLS	▽=0
	△=0

GENERAL TOLERANCES (UNLESS SPECIFIED)	DIMENSION STYLE MM ONLY
	SCALE 5:1
	DESIGN UNITS METRIC
	THIRD ANGLE PROJECTION
	TITLE
	DRAWN BY JS.KANG
	DATE 93/04/27
	CHECKED BY BK.CHOI
	DATE 93/04/27
	APPROVED BY CW.LEE
	DATE 93/04/27
	MATERIAL NO.
	DOCUMENT NO.
	SHEET NO.
	SIZE A3
	THIS DRAWING CONTAINS INFORMATION THAT IS PROPRIETARY TO MOLEX INCORPORATED AND SHOULD NOT BE USED WITHOUT WRITTEN PERMISSION

4 PLACES ± --- ± ---	
3 PLACES ± --- ± ---	
2 PLACES ± 0.3 ± ---	
1 PLACE ± 0.3 ± ---	
ANGULAR ± 1 °	
DRAFT WHERE APPLICABLE MUST REMAIN WITHIN DIMENSIONS	SEE TABLE

SCALE 5:1	DESIGN UNITS METRIC	THIRD ANGLE PROJECTION
TITLE		
.250 SLIP-ON RECEPTACLE TERMINAL		
MOLEX MOLEX INCORPORATED		
DOCUMENT NO. SD-35725-3**0		SHEET NO. 1 OF 01