



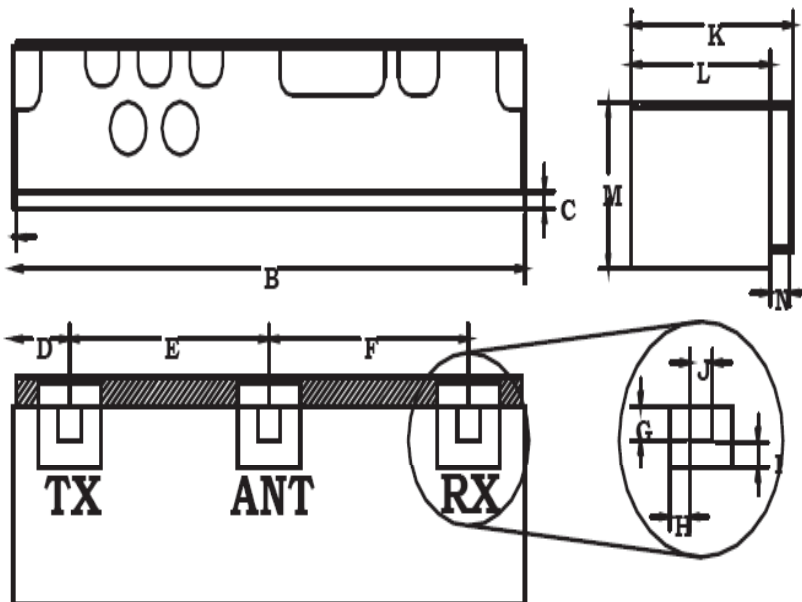
<u>Characteristics</u>	<u>Band 1</u>	<u>Band 2</u>
<b>Passband:</b>	1850-1909.4 MHz	1930.6-1990 MHz
<b>Bandwidth:</b>	59.4 MHz	59.4 MHz
<b>Passband Return Loss:</b>	10 dB min	10 dB min
<b>Passband Insertion Loss:</b>	3.2 dB max	3.7 dB max
<b>Passband Ripple:</b>	2.6 dB max	3 dB max
<b>Input / Output Impedance:</b>	50 Ohms	50 Ohms
<b>Isolation:</b>	55 dB min	50.5 dB min
<b>Power Handling:</b>	2 W max	2 W max

<u>Mechanical</u>	
<b>Mounting Method:</b>	SMT
<b>Dimensions:</b>	19.92 x 6.45 x 4.6 mm

<u>Environmental</u>	
<b>Operating Temperature:</b>	-40 to +70 deg.C
<b>Storage Temperature:</b>	-50 to +90 deg.C

**This product is RoHs compliant.**

**Outline Drawing:**

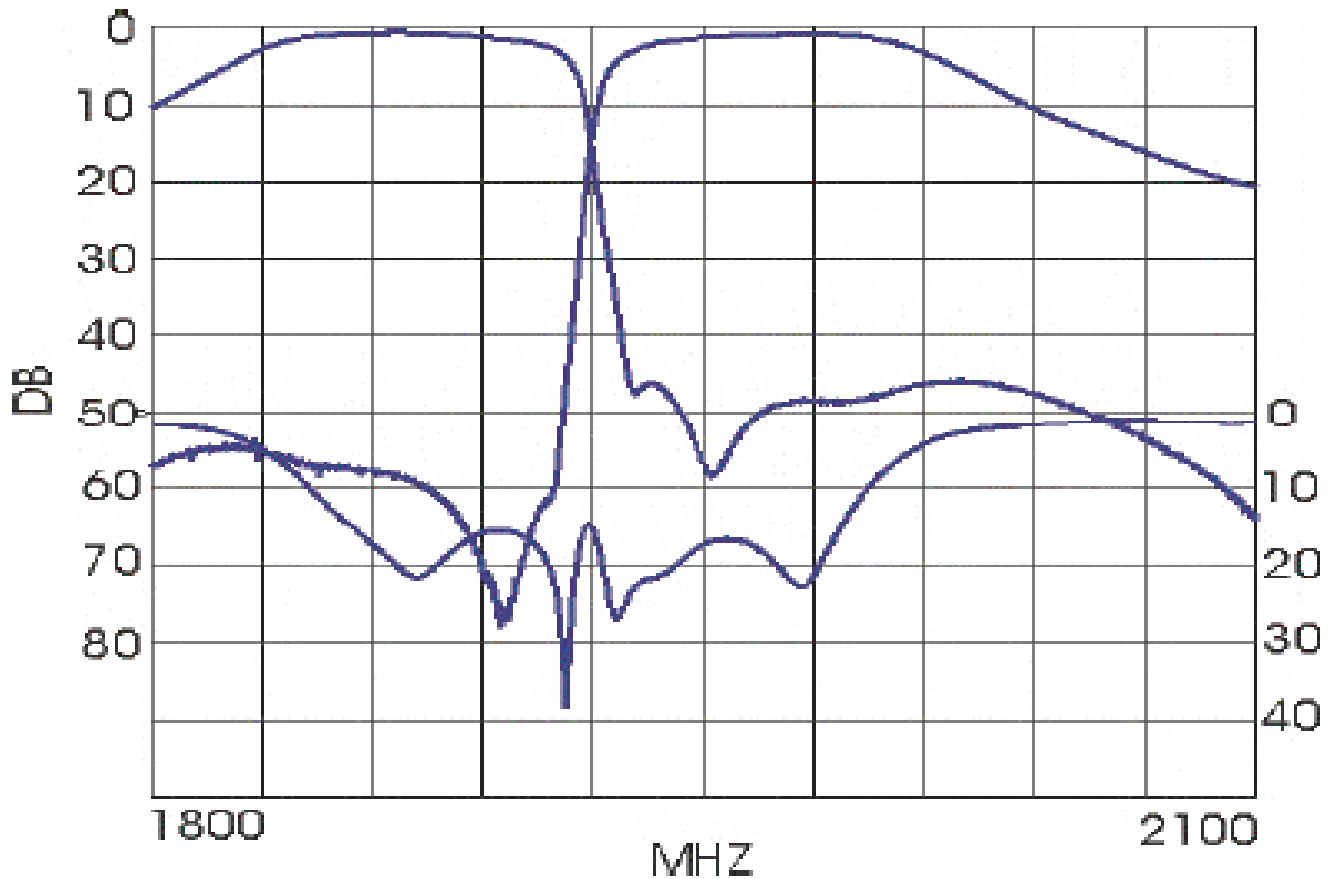


Dim	Nominal (mm)	Tolerance (mm) +/- or max
*A	0.13	0.25
B	19.92	max
*C	0.69	0.13
D	2.2	0.25
E	7.7	0.13
F	7.7	0.13
G	0.89	0.13
H	0.76	0.13
I	0.76	0.13
J	0.89	0.13
K	6.45	max
L	5.37	0.2
M	4.6	max
*N	0.76	0.13
*Indicates Reference Only		

Available at our Web store:



**Response Plot:**



Available at our Web store: