

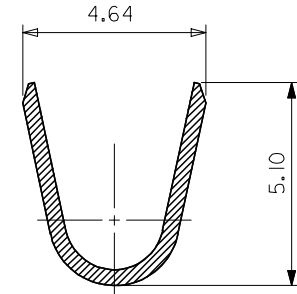
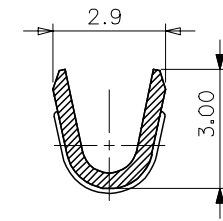
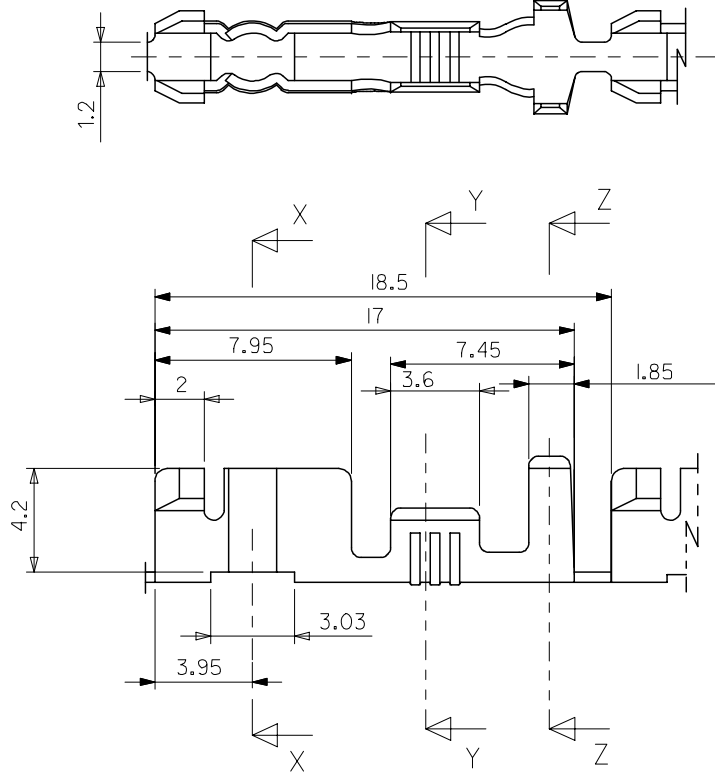
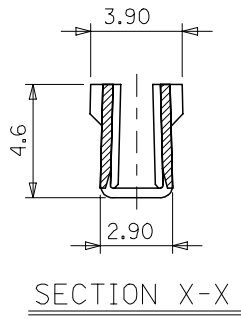
DO NOT SCALE DRAWING
DIMENSION IN METRIC

DWG. IO.
SD-57920-001

SIMILAR ITEM

PROJECT NO.

MATERIAL NO.	ENGINEERING NO.
579206002	57920-6002



- NOTES
1. MATERIALS : PHOSPHER BRONZE, 0.4mm THICK
 2. FINISH : TIN-PLATING
 3. APPLICABLE WIRE : AWG#18-16

NEW RELEASED EC NO. KOR2002-0093 DRWN: C.B.CHIN 02/03/21 CHK: W.Y.YANG APPR: C.W.LEE	QUALITY SYMBOLS MAJOR = 0 CRITICAL = 0	GENERAL TOLERANCES: (UNLESS SPECIFIED)		SCALE 5:1	DESIGN UNITS <input checked="" type="checkbox"/> mm <input type="checkbox"/> INCH	THIRD ANGLE PROJECTION	DIMENSIONS: <input type="checkbox"/> mm <input type="checkbox"/> INCH <input type="checkbox"/> mm <input checked="" type="checkbox"/> mm ONLY	SHT	REV
		4 PLACES	±0.	±.	DRAWN BY & DATE W.Y.YANG 99/11/13	TITLE: CLUSTER TERMINAL (2.29 DIA. PIN)			
3 PLACES	±0.	±.	CHECKED BY & DATE B.K.CHOI 99/11/13						
2 PLACES	±0.25	±.	APPROVED BY & DATE C.W.LEE 99/11/13	MATERIAL NO. SEE CHART DRAWING NO. SD-57920-001 SHEET NO. IOF1					
1 PLACE	±0.25	±.	CAD FILENAME S57920.dgn						
ANGULAR: ±	°	DRAFT WHERE APPLICABLE MUST REMAIN WITHIN DIMENSIONS		THIS DRAWING CONTAINS INFORMATION THAT IS PROPRIETARY TO MOLEX INCORPORATED AND SHOULD NOT BE USED WITHOUT WRITTEN PERMISSION.				SIZE B	

8 7 6 5 4 3 2 1

F
E
D
C
B
A

MX-A3