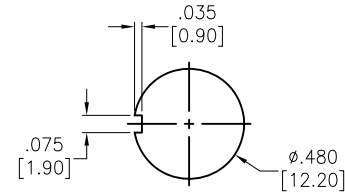
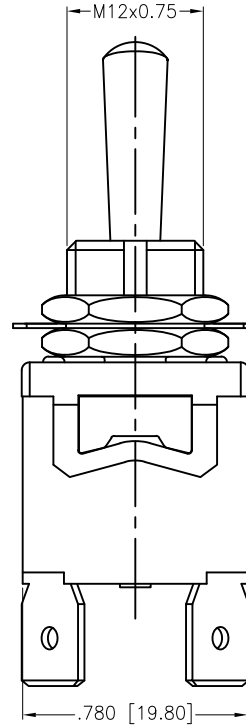
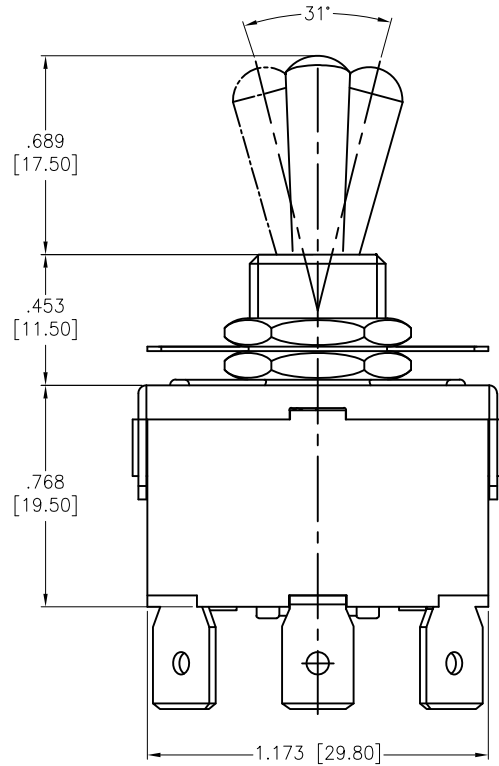
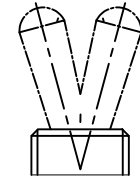


APPROVED: \_\_\_\_\_  
 DATE: \_\_\_\_\_ TITLE: \_\_\_\_\_

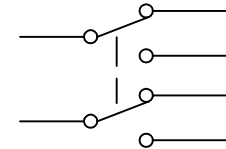
Rev	AWO #	Description	Date	Appr
-		RELEASED	8/10/21	
A		UPDATE SPEC.	10/20/21	WX/RC
B		UPDATED DRAWING	6/15/22	JJ/MC
C		UPDATED COLOR	6/15/22	JJ/MC



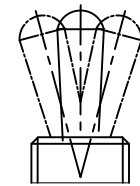
RECOMMENDED  
 PANEL CUT-OUT



2 WAY



CIRCUIT DIAGRAM  
 (DPDT)



3 WAY

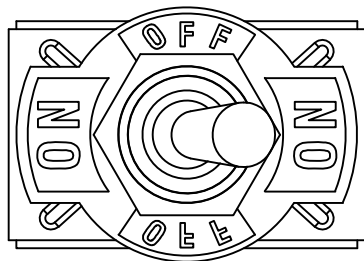
SW-T1-4X-B-K2A

- B=ON-ON
- D=ON-(ON)
- E=ON-OFF-ON
- F=ON-OFF-(ON)
- G=(ON)-OFF-(ON)

**SPECIFICATIONS:**

Material:  
 Body: Bakelite, Color: Red Brown  
 Lever: Brass, Nickel plated  
 Terminal: Brass, Silver plated  
 Electrical:  
 Rating: 6A @ 250V AC  
 10A @ 125V AC

Contact resistance: 50 mΩ max  
 Insulation resistance: 1000 MΩ min @ 500 VDC  
 Dielectric withstanding voltage: 1500V AC for 1 minute  
 Electrical Life: 10,000 cycles  
 Temperature Rating:  
 Operating temperature: -25°C to +85°C  
 Environmental:  
 Lead free, RoHS compliant



UNLESS OTHERWISE SPECIFIED ALL DIMENSIONS ARE INCHES [MM]. TOLERANCES: EXCEPT AS NOTED			
INCHES		HOLES	
.X	± .10	ØX	± .10
.XX	± .020	ØXX	± .015
.XXX	± .015	ØXXX	± .010



909 Rahway Avenue,  
 Union, NJ 07083  
 Phone: 908-687-5000  
 Fax: 908-687-5710

DRAWN	WX	8/10/21
CHECKED	RC	8/10/21
APPROVED		

TITLE SWITCH, TOGGLE MEDIUM, DPDT,  
 PC TERMINALS .250 [6.35mm]

THIS DRAWING CONTAINS INFORMATION THAT IS PROPRIETARY AND SHOULD NOT BE USED WITHOUT PRIOR WRITTEN PERMISSION FROM ADAM TECH

SIZE X	PART NO. SW-T1-4X-B-K2A	REV. C
REF: S00206C	SCALE: NTS	SHEET 1 OF 1