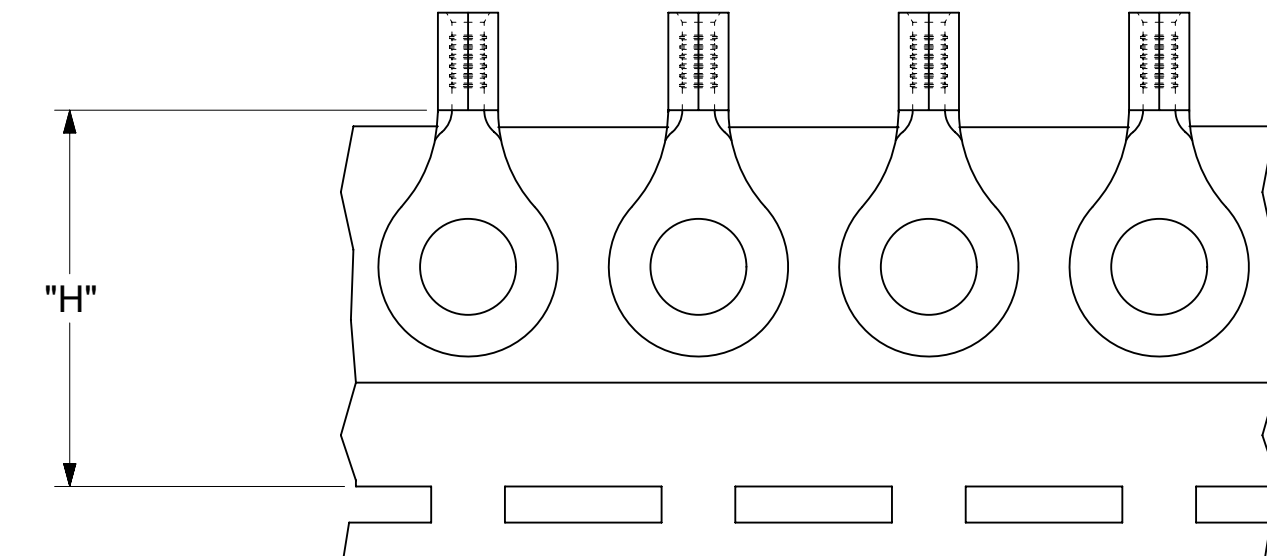
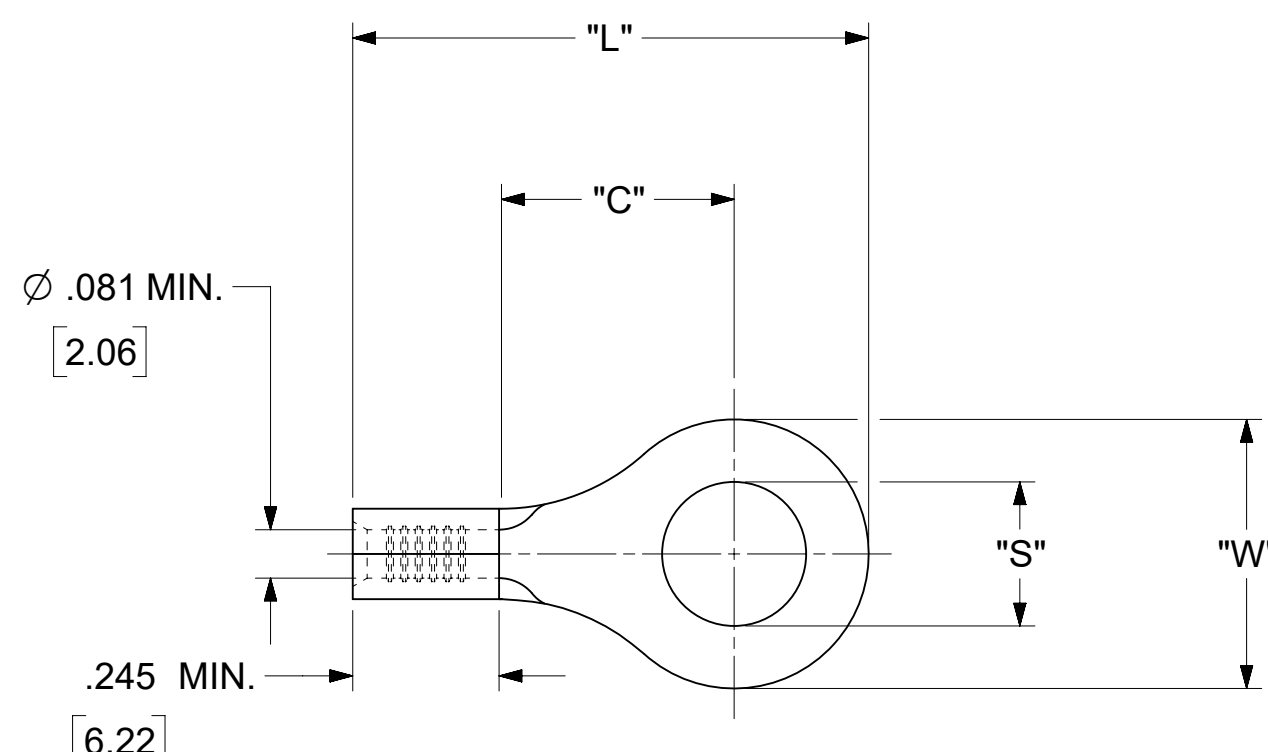


LOOSE PIECE		TAPE MOUNTED		SPECIFICATIONS					
MATERIAL NUMBER	ENGINEERING NUMBER	MATERIAL NUMBER	ENGINEERING NUMBER	STUD SIZE	"S" ±.005 [0.13]	"W" ±.010 [0.25]	"C" MIN.	"L" MAX.	"H"
190440143	B-118-10	---	---	10	.198 [5.03]	.534 [13.56]	.554 [14.07]	1.115 [28.32]	1.172 [29.77]
190440144	B-118-14	---	---	14	.265 [6.73]				
190440146	B-118-38	---	---	38	.390[9.91]				
190440148	B-118-56	---	---	56	.328 [8.33]				
190440150	B-123-04	---	---	4	.119 [3.02]	.250 [6.35]	.209 [5.31]	.639 [16.23]	.98 [24.89]
190440152	B-123-06	---	---	6	.146 [3.71]				
190440154	B-123-08	190440155	B-123-08T	8	.173 [4.39]				
190440156	B-125-10	---	---	10	.198 [5.03]	.467 [11.86]	.388 [9.86]	.916 [23.27]	.98 [24.89]
190440158	B-125-14	190440159	B-125-14T	14	.265 [6.73]				
190440160	B-125-56	---	---	56	.328 [8.33]				
190440028	B-137-04	---	---	4	.119 [3.02]	.312 [7.92]	.285 [7.24]	.730 [18.54]	.98 [24.89]
190440030	B-137-06	---	---	6	.146 [3.71]				
190440031	B-137-08	190440176	B-137-08T	6	.173 [4.39]				
190440032	B-137-10	190440177	B-137-10T	10	.198 [5.03]				
190440033	B-139-04	---	---	4	.119 [3.02]	.342 [8.69]	.310 [7.87]	.775 [19.69]	.98 [24.89]
190440035	B-139-06	---	---	6	.146 [3.71]				
190440037	B-139-08	---	---	8	.173 [4.39]				
190440039	B-139-10	---	---	10	.198 [5.03]				



PARTS ON TAPE

- NOTES:
1. MATERIAL: COPPER .031±.001 [0.79] THK.
 2. PLATING: ELECTRO-TIN (.0003 MIN).
 3. WIRE SIZE: 16-14 AWG
1.0-2.5 MM²
 4. ALL DIMENSIONS IN INCHES/[MM].
 5. PARTS ARE ROHS COMPLIANT.
 6. DIMS. SHOWN ARE FOR REFERENCE ONLY.

THIS DRAWING CONTAINS INFORMATION THAT IS PROPRIETARY TO MOLEX ELECTRONIC TECHNOLOGIES, LLC AND SHOULD NOT BE USED WITHOUT WRITTEN PERMISSION													
DIMENSION UNITS INCH/MM		SCALE NTS		CURRENT REV DESC: OBSOLETE PART NUMBERS AS PER PCN#512131.				molex					
GENERAL TOLERANCES (UNLESS SPECIFIED)				EC NO: 727779		RING TONGUE TERMINAL KRIMPTITE 100-SERIES							
4 PLACES	±		±	DRWN: ANIKES1		2022/09/29		PRODUCT CUSTOMER DRAWING					
3 PLACES	±		± 0.005	CHK'D: GGA		2022/11/29							
2 PLACES	±	0.13	± 0.01	APPR: GGA		2022/11/29		DOCUMENT NUMBER 190440143					
1 PLACE	±	0.25	±	INITIAL REVISION:						DOC TYPE PSD	DOC PART 000	REVISION A2	
0 PLACES	±		±	DRWN: JJ		1984/10/15		MATERIAL NUMBER SEE TABLE		CUSTOMER GENERAL MARKET		SHEET NUMBER 1 OF 1	
ANGULAR TOL ± 0.5 °		THIRD ANGLE PROJECTION		APPR: JMACNEIL		2019/07/01							
DRAFT WHERE APPLICABLE MUST REMAIN WITHIN DIMENSIONS				DRAWING C-SIZE		SERIES 19044							