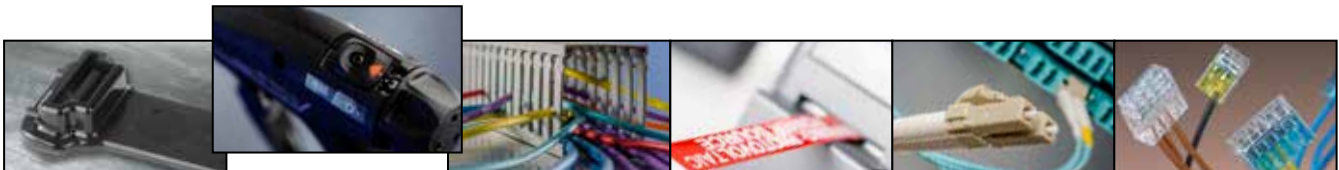


EVO® Cable Tie Application Tools



The **EVOLUTION** Story

The tool that started a revolution evolves.

Durability, comfort and precision are designed into each HellermannTyton EVO® series cable tie application tool. The newest addition to the family, EVO 9, comprises the same revolutionary technology as the original EVO 7 tool, with enhanced components and a wider nose to accommodate heavy duty and wide strap cable ties. EVO tools are the best cable tie tools on the market. Here's why:

DURABILITY — EVO tools are manufactured with the highest quality materials and components, including impact-resistant housings. HellermannTyton's comprehensive and rigorous testing standards result in tools that are built for industrial environments. In fact, EVO tools have been tested to over 1,000,000 precision cuts before requiring routine maintenance. On average, you'll get over twice the life from an EVO tool compared to other professional manual tools on the market.

COMFORT — With EVO's advanced ergonomic design, comfort translates into a safer tool to operate. The risk of repetitive motion injury is significant when an installer is applying cable tie after cable tie, day after day. EVO's Tension / Lock / Cut (TLC) technology minimizes the stress on hands and wrists and "kickback" that occur with traditional tools. With TLC, the EVO does more of the work, requiring less hand force from the user.

PRECISION — Featuring 33 different tension settings, EVO tools allow for precise, repeatable tensioning and cuts. Factory tested and calibrated, each EVO tool also allows for manual calibration to the user's specification. The easy-to-adjust tension knob makes adjustments effortless. The EVO 9 also offers a quick-adjust feature that allows the user to quickly jump to higher or lower tension ranges - a feature that is particularly useful when the job requires using multiple types of ties, like standard and heavy-duty wide strap.



Performance



You'll be able to count on the EVO's superior performance job after job. That's because EVO tools are designed for maximum durability. Its advanced composite housing is both impact and chemical resistant, and built to stand up to the most demanding industrial environments.

When used in combination with HellermannTyton's superior line of highly engineered cable ties, EVO tools set the new standard for safe and efficient cable tie application. If consistency is the mark of greatness, EVO tools more than measure up to the standard. Each EVO tool is individually calibrated at our factory, ensuring consistent performance from tool to tool, and over the life of each individual tool. But then, would you expect anything less from the global leader in cable tie hand tool design?

HellermannTyton Cable Ties **BETTER BY DESIGN**



Innovation. Performance. Durability. The qualities that went into creating EVO tools are the same that go into making HellermannTyton cable ties the finest in the industry.

When HellermannTyton's industry-leading cable ties are used in combination with an EVO tool, you can be confident that each tie has been precisely tensioned and cut, ensuring the longest and safest life in application.

HellermannTyton cable ties are engineered to exacting standards and manufactured from high-grade materials for long-lasting reliability and superior tensile strength.

Add in our commitment to work closely with you to meet the unique tie and tool needs of your operation, and we think you'll agree: HellermannTyton ties it all together.

Features



EVO 7

Thumb Lever: To adjust the tension, slide the non-slip thumb lever forward, adjust to desired tension setting, then release to set tension in place.

Impact-Resistant Housing: Made from durable, lightweight composite, EVO tools resist chemical contamination and are built to stand up to the toughest industrial environments.

Easy Blade Replacement: One-way blade installation makes on-site blade replacement a snap. There's no need to send the tool in, and you're up and running again in no time.



EVO 9

Tension Knob: Rotate the knob to any of 33 precise pre-set tension settings. These easy-to-read settings remain constant and consistent from tool to tool.

Quick-Adjust Feature

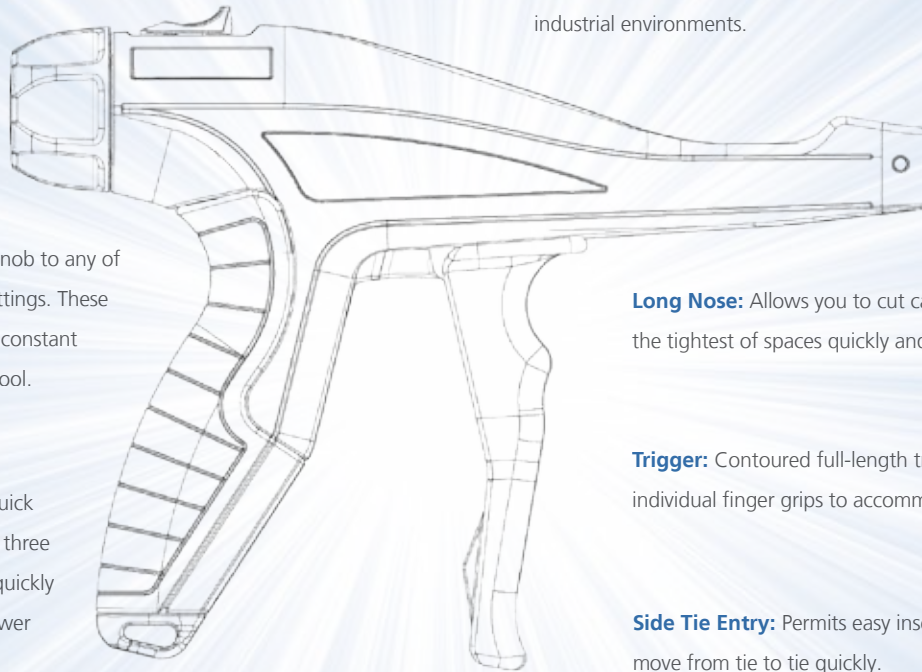
(EVO 9 series tools): Make quick blind adjustments that move three whole settings at a time, to quickly jump between higher and lower tension ranges.

Contoured Ergonomically Engineered Handle:

Crafted from soft-grip, non-slip material, the handle features an integrated air cushion that conforms to your hand for maximum comfort.

Integrated Hanger Hook:

Allows easy storage and accessibility.



Long Nose: Allows you to cut cable ties in the tightest of spaces quickly and easily.

Trigger: Contoured full-length trigger incorporates individual finger grips to accommodate multiple hand sizes.

Side Tie Entry: Permits easy insertion of ties, so you can move from tie to tie quickly.



EVO 7



EVO 9

CHOOSE THE TOOL FOR YOUR APPLICATION

EVO 7

FOR 18 LB. TO 80 LB. CABLE TIES



EVO 7
STANDARD



EVO 7
SHORT SPAN

EVO 9

FOR 50 LB. TO 250 LB. CABLE TIES



EVO 9
STANDARD
ALSO AVAILABLE IN
SHORT SPAN



EVO 9HT
HIGH TENSION

Application Tools

Manual Tools for 18 lb. to 80 lb. Cable Ties

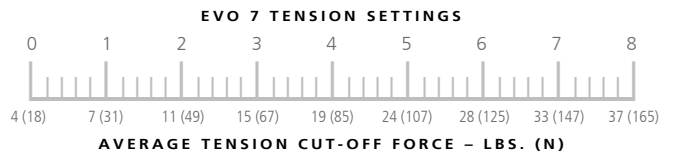
EVO 7

For 18 lb. to 80 lb. cable ties

EVO® tools have redefined the cable tie application tool, by combining durability, precision and control with unparalleled comfort. Manufactured with high-performance materials and components, the EVO 7 has been proven to outperform and outlast other professional manual tools on the market. Its innovative, ergonomic design minimizes stress on hands and wrists and the “kickback” that occurs with traditional tools, reducing the risk of repetitive motion injuries.

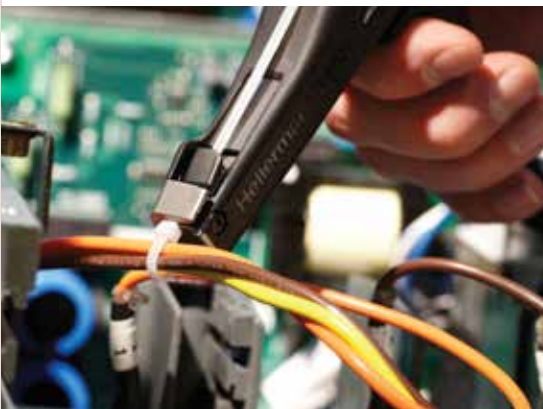
Features and Benefits

- Tensions and provides clean, flush cuts for 18 lb. to 80 lb. cable ties.
- Impact-resistant housing and durable components for extended service life.
- Easy-to-adjust tension knob offers 33 different settings for precise, repeatable applications.
- Advanced ergonomic design minimizes necessary hand force and kickback to reduce repetitive motion injuries.



Product Selection					
Article No.	Part No.	Type	Description	Compatible Cable Tie Series	Pkg. Qty.
110-70083	110-70083	EVO7	EVO 7 Mechanical Hand Tool, Standard Hand Span 90 mm	T18, T30, T40, T50, T80, IT18, IT50	1
110-70084	110-70084	EVO7SP	EVO 7SP Mechanical Hand Tool, Short Hand Span 80 mm	T18, T30, T40, T50, T80, IT18, IT50	1

Dimensions are approximate and subject to change. Use **Part No.** for ordering and **Type** for specification.



EVO 9

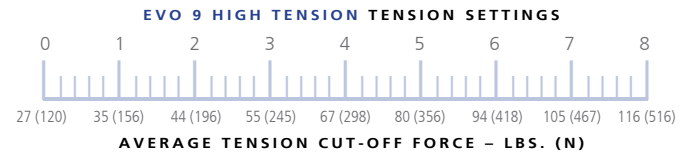
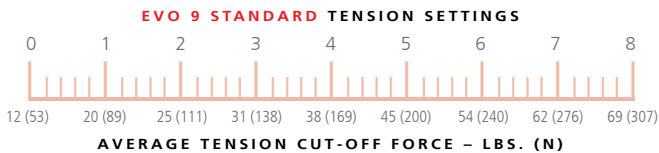
For 50 lb. to 250 lb. cable ties

EVO® tools have redefined the cable tie application tool, by combining durability, precision and control with unparalleled comfort. Manufactured with high-performance materials and components, the EVO 9 has been proven to outperform and outlast other professional manual tools on the market. Its innovative, ergonomic design minimizes stress on hands and wrists and the “kickback” that occurs with traditional tools, reducing the risk of repetitive motion injuries.



Features and Benefits

- Tensions and provides clean, flush cuts for 50 lb. to 250 lb. cable ties, including wide strap ties.
- EVO 9HT is optimized for applications that require higher tensions using 120 lb. to 250 lb. cable ties.
- Impact-resistant housing and durable components for extended service life.
- Easy-to-adjust tension knob offers 33 different settings for precise, repeatable applications.
- Quick-adjust tension feature allows user to move three whole settings at a time, to quickly jump between higher and lower tension ranges.
- Advanced ergonomic design minimizes necessary hand force and kickback to reduce repetitive-motion injuries.



Product Selection					
Article No.	Part No.	Type	Description	Compatible Cable Tie Series	Pkg. Qty.
110-80000	110-80000	EVO9	EVO 9 Mechanical Hand Tool, Standard Hand Span 90 mm, Tension Range 12 lb. to 69 lb.	T50, T80, T120, T150, T250, T255, WS	1
110-80001	110-80001	EVO9SP	EVO 9 Mechanical Hand Tool, Short Hand Span 80 mm, Tension Range 12 lb. to 69 lb.	T50, T80, T120, T150, T250, T255, WS	1
110-80004	110-80004	EVO9HT	EVO 9HT High Tension Mechanical Hand Tool, Standard Hand Span 90 mm, Tension Range 27 lb. to 116 lb.	T120, T150, T250, T255, WS	1

Dimensions are approximate and subject to change. Use **Part No.** for ordering and **Type** for specification.



Ergonomic by design, and put to the test



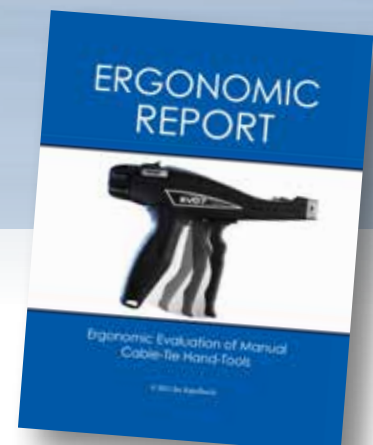
Lightweight and designed to fit comfortably in hand, EVO's handle is designed to keep the wrist in an upright, neutral position. Crafted from a soft, non-slip material, the handle is perfected with a built-in air cushion to reduce pressure points in an operator's hand. For greater comfort and control, the soft-touch trigger features an individual finger grip.

Tested and proven. Here's what independent researchers found when they tested EVO's TLC technology against other professional cable tie tools and ranked user preferences:

- Required significantly less applied grip force than the other tools.
- Rated most comfortable based on lighter grip force requirements, lack of hand pinching and minimal kickback during use.
- Consistently ranked best in the areas of overall preference, overall comfort, ease of tension setting and overall ease of tool use.



Read more about EVO tools
and the ergonomic study at
www.hellermann.tyton.com/evo



Application Tools

Accessories

EVO Tool Accessories

HellermannTyton offers a variety of accessories and replacement parts for your EVO tool.

Product Selection	
Part No.	Description
Accessories and Replacement Parts	
110-70021	EVO 7 Replacement Blade
110-70011	EVO 7 Replacement Nosepiece
110-70131	EVO 7; 1 mm Extended Nosepiece
110-70132	EVO 7; 2 mm Extended Nosepiece
110-70133	EVO 7; 3 mm Extended Nosepiece
110-80037	EVO 9 Replacement Blade
110-80018	EVO 9 Replacement Nosepiece
110-80064	EVO 9; 2 mm Extended Nosepiece
110-80065	EVO 9; 3 mm Extended Nosepiece
110-80066	EVO 9; 4 mm Extended Nosepiece
110-80067	EVO 9; 5 mm Extended Nosepiece
110-70089	EVO Tools Calibration Tool
110-70091	T8 Star Driver
110-99000	UC200 Digital Calibration System
Popular Cable Ties	
T18R9M4	4", 18 lb. Cable Tie, Natural Nylon for up to 0.87" bundle
T30R0M4	6", 30 lb. Cable Tie, Black Nylon for up to 1.5" bundle
T50R0HSM4	8", 50 lb. Cable Tie, Black Heat Stabilized Nylon for up to 2" bundle
T120R0H4	15", 120 lb. Cable Tie, Black Nylon for up to 4" bundle
DCT110HIRK2	19", 150 lb. Dual Clamping, wide strap tie for up to 2, 2.3" bundles
T250M0X2	22", 250 lb. Cable Tie, Black Nylon for up to 5.9" bundle



110-70091



110-70089



110-99000



110-70021

TOOL WARRANTY

HellermannTyton offers a 90-day warranty with the purchase of any cable tie application tool. An extended one-year warranty is available by registering the tool online after receipt of the tool.

Visit: www.hellermann.tyton.com/warranty to register your tool.

HellermannTyton warrants our mechanical hand tools to be free from defects in manufacturer workmanship and material under normal conditions of use and service for a period of 90 days from initial delivery to the purchaser. Purchaser shall notify HellermannTyton of any warranty claim within ten (10) business days after discovery, but not later than the expiration of the above warranty period or such claim shall be deemed waived.

The foregoing warranties and remedies are exclusive and in lieu of all other warranties and remedies whatsoever, expressed or implied, including, but not limited to, any warranties of merchantability or fitness for a particular purpose, which HellermannTyton expressly disclaims. All warranties are deemed void if tool is opened or tampered with.

EXTENDED TOOL WARRANTY

STANDARD

90 Days

EXTENDED

1 Year
Register online to apply



Register product online within 1 month



Registration notice email will be sent

1 Free Year of Warranty Repairs

TLC Technology



At the heart of every EVO hand tool lies the revolutionary, patent-pending Tension / Lock / Cut (TLC) technology that dramatically changes how cable ties are cut.

T

TENSION

Want to select a specific level of tie tension for bundling? Simply rotate the tension knob to any of the easy-to-read, pre-set tension settings. Standard cable tie tools stretch the tie while cutting, causing the tie end to retract into the head or leave a protruded edge. But with EVO tools, the tie is cut at precisely the tension you select, for a clean, flush cut at the tie head – without overstressing the tie.



L

LOCK

With TLC Technology, the patent-pending locking mechanism detects when the desired tension is met, and locks the tie in place prior to cutting. At that moment, all force applied to the trigger is directed to cutting the tie. That means the trigger only needs to be pulled far enough to cut the tie, reducing the range of motion and subsequent strain on the hand and arm.



C

CUT

Once the tie is locked in place, the tool operator needs only to advance the trigger enough to cut the tie. Since there is no dynamic tension (stretching) on the cable tie, all energy is focused on driving the blade through the tie, resulting in a clean, flush cut – time after time.



**HellermannTyton North American
Corporate Headquarters**

7930 N. Faulkner Rd, PO Box 245017
Milwaukee, WI 53224-9517
Phone: (414) 355-1130, (800) 537-1512
Fax: (414) 355-7341, (800) 848-9866
email: corp@htamericas.com
www.hellermann.tyton.com
TS16949, ISO 9001, and ISO14001 certified

HellermannTyton Canada

Unit #4, 205 Industrial Parkway North
Aurora, Ontario L4G 4C4 Canada
Phone: (800) 661-2461
Fax: (800) 390-3904
email: sales@hellermanntyton.ca

HellermannTyton Mexico

Anillo Periferico Sur 7980 Edificio 6A
Parque Industrial Tecnologico II
Santa María Tequepexpan
Tlaquepaque, Jalisco, Mexico 45601
Phone: 011-52-33-3-133-9880
Fax: 011-52-33-3-133-9861
email: info@htamericas.com.mx
ISO 9001 certified

Warranty Policy

HellermannTyton products are warranted to be free from defects in material and workmanship at the time sold by us; but our obligation under this warranty and that of the seller is limited to the replacement of the product, and neither we nor the seller are bound by any other warranty, expressed, implied or statutory. Under no circumstances are we or the seller liable for any loss, damage, expenses or consequential damages of any kind arising out of the use or inability to use these products. All are sold with the understanding that the user will test them in actual use and determine their adaptability for the intended uses.

